



THE ROYAL
ATLANTIS
THE PALM, DUBAI

RESORT & RESIDENCES



THE ROYAL
ATLANTIS
THE PALM, DUBAI

RESORT & RESIDENCES

Inspired by age-old myth
CREATED FOR LEGENDARY LIVING

Ancient writings tell of a wondrous civilisation, lost in the swirling seas of time. Inspired by this tale, Atlantis, The Palm rose majestically from the deep. Now, as The Royal Atlantis Resort & Residences reaches to the sky, you can be part of this timeless story. Become a founding resident and enjoy an incomparable luxury lifestyle in a home of daring, pioneering creativity.



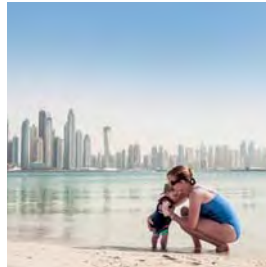
The Royal Atlantis Resort & Residences





Computer generated image of The Royal Atlantis Resort & Residences

Dubai, a truly
GLOBAL ADDRESS AND
DYNAMIC DESTINATION



When Greek philosopher Plato described the citizens of ancient Atlantis as great and prosperous people, he was also foretelling the story of modern Dubai. Today, the 200 nationalities living and working in the city confirm its status as a vibrant global destination. The arrival of The Royal Atlantis Resort & Residences will continue to grow the city's enduring appeal to discerning world citizens.



Above from left: Alfresco Dining, Dubai Marina Skyline as seen from The Palm, Dubai Marina, Dubai Fashion Week





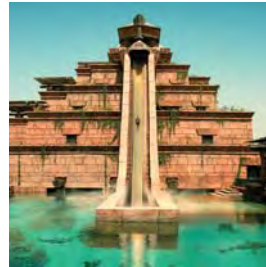
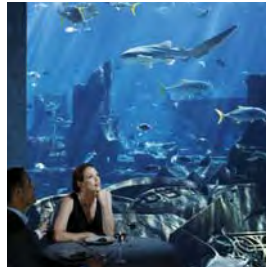
THE VISION

*A place known
for the excellence
of its VIRTUE
AND STRENGTH
AMONG ALL
MANKIND*



Atlantis, The Palm in Dubai

WHERE FANTASY BECAME REALITY



Taking its theme from the surrounding ocean, this iconic resort stands on the crescent of The Palm. With Aquaventure Waterpark, the Lost Chambers Aquarium and luxurious accommodation featuring signature underwater suites, the resort celebrates the sea. The perfection of ancient Atlantis may be idealised, but the worldly attractions of Atlantis, The Palm are real.



Photography of Atlantis, The Palm in Dubai

Bringing the fable to life
WITH INSPIRATION FROM
AN ANCIENT CIVILISATION

In mythology, Atlantis was a utopian society, a pinnacle of grace and grandeur. In reality, The Royal Atlantis also reaches new heights, with Residences and Resort suites soaring skywards. Designed by internationally acclaimed architects Kohn Pedersen Fox, this new icon features lofty gardens and sky-high infinity pools. The Atlantis legend continues to stir the emotions.



Computer generated image of The Royal Atlantis Resort & Residences







Computer generated image of The Royal Atlantis Resort & Residences



THE EXPERIENCE

Enter a wondrous
world WITH BLESSINGS
FREELY FURNISHED
IN INFINITE
ABUNDANCE

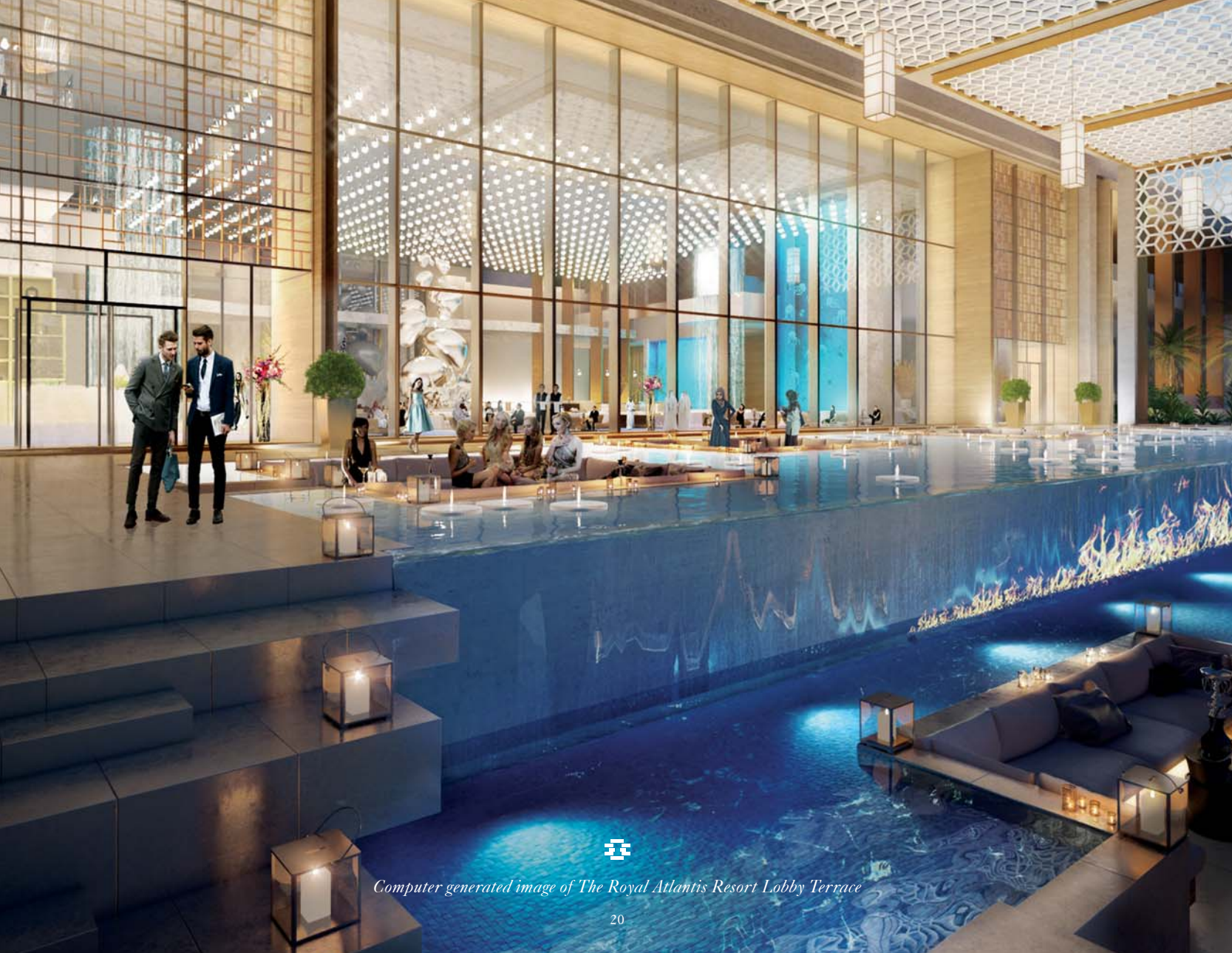


Laid out before you,
A MARVEL TO BEHOLD
FOR BRAVURA BEAUTY

Savour an experience that, though magical, is rooted in reality. Approaching The Royal Atlantis Resort & Residences, you will be struck by its delightful elegance. Vast sheets of water cascade before you and mighty flames erupt from the shallows. In a world-first feat of engineering, fire and water are celebrated throughout The Royal Atlantis, adding a sense of theatre to everyday life.



Computer generated image of The Royal Atlantis water display



Computer generated image of The Royal Atlantis Resort Lobby Terrace







Computer generated image of couple swimming at The Royal Atlantis Resort & Residences



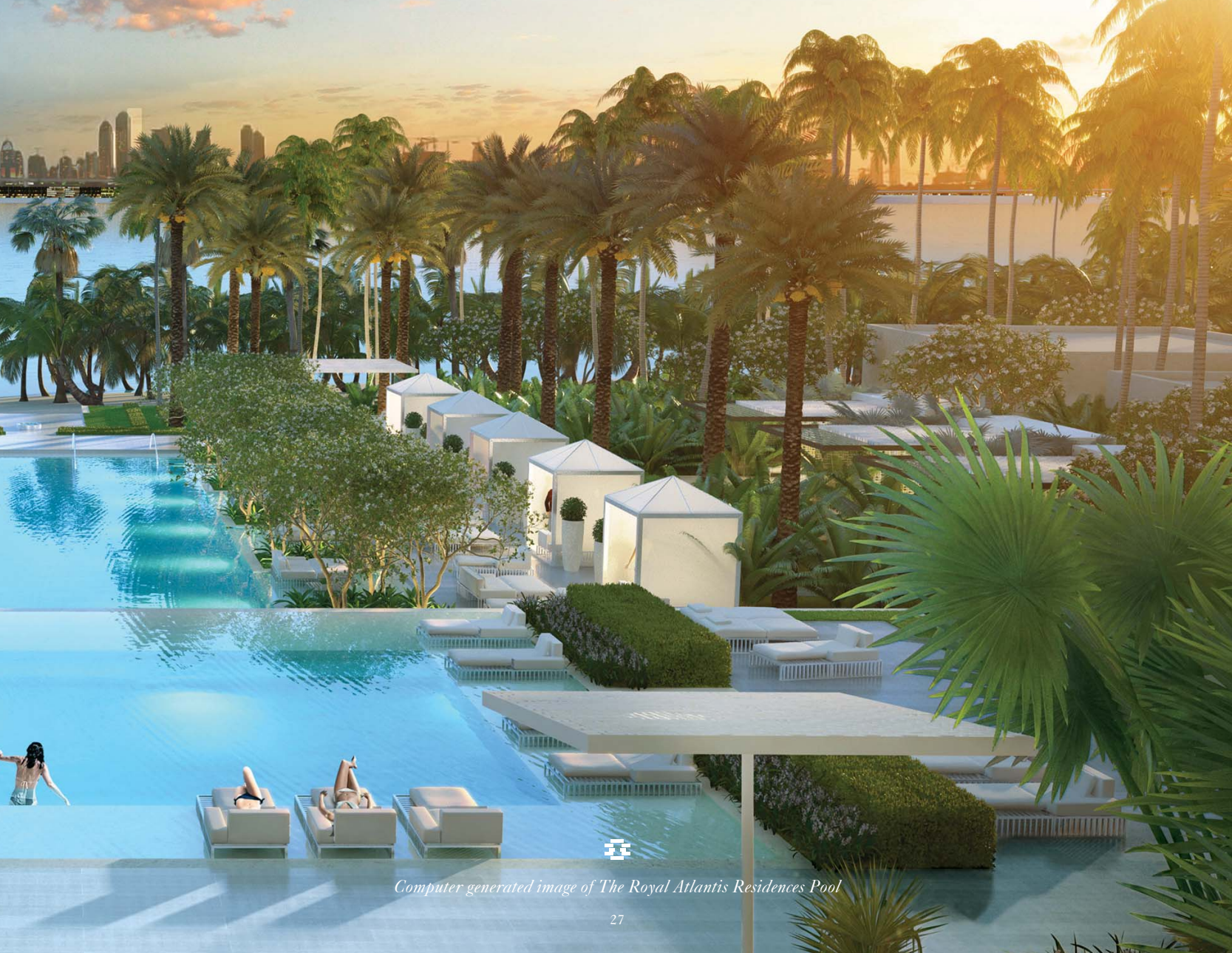
A beautiful shore
WITH AN OUTLOOK OF
BOUNDLESS SEA

In the mythical Atlantis, rivers and fountains flowed freely. At The Royal Atlantis, the ocean is ever present. Providing idyllic vistas, The Royal Atlantis Resort & Residences faces the iconic Dubai skyline above the waters of The Palm in one direction and nothing but open sea and sky in the other. The private beach offers redefined waters-edge dining.



Computer generated image of The Royal Atlantis Resort & Residences, as seen from the ocean





Computer generated image of The Royal Atlantis Residences Pool



Infinitely enjoyable

BEYOND THE EXTREMITIES OF THE IMAGINATION

Inspired by the fabled lost city of Atlantis, where ornate baths were plentiful, The Royal Atlantis Resort & Residences pools reach new, dramatic heights. A 90-metre sky-high infinity pool is the ultimate haven for resort guests and residents to lounge, socialise or play. Under the setting sun, with Dubai glowing on the horizon, the ultra-pool lounge comes alive as the twilight destination for unparalleled sophistication.



Computer generated image of The Royal Atlantis Resort & Residences Sky Pool



Computer generated images of The Royal Atlantis Resort Sky Pool Restaurant and Bar





Delightful diversions
WITH ALL MANNER OF
WORLDLY WONDERS

Only the most prestigious retail offerings will be found at The Royal Atlantis Resort & Residences. You will discover elite brands that appeal to the world's most discerning citizens. Ancient Atlantis was said to be the greatest power the world had known, yet its wares could not compare with those displayed within the beautiful boutiques of The Royal Atlantis Resort & Residences.



Computer generated image of retail at The Royal Atlantis Resort & Residences



THE RESIDENCES

*Like citizens of ancient
Atlantis, BE FURNISHED
WITH EVERYTHING
WHICH IS NEEDED*



*Residences soaring over 150 metres
above the sea* AN IDEAL SOCIETY,
LIKELY TO BE MOST PERFECT



Computer generated image of The Royal Atlantis Residences





Reside in style

WITHIN A GREAT AND
WONDERFUL EDIFICE

A worthy successor to the mythical lost city, The Royal Atlantis Resort & Residences on The Palm in Dubai is destined to become an iconic, world-renowned address. The building is a breathtaking design featuring contemporary living spaces cantilevered into the Arabian sky. All Residences offer uninterrupted views towards the sea or across the waters of The Palm towards the Dubai skyline.



Computer generated image of the Signature Penthouse interior at The Royal Atlantis Residences

Reaching purposefully to the sky
A MAJESTIC BALANCE OF
SPACE AND LIGHT

True to the spirit of ancient Atlantis, world-class designers have created an environment that is endowed with enticing pools and luxuriant gardens. The Residences will have expansive living and entertaining spaces with balconies or lushly landscaped terraces. Selected Residences feature a vast open terrace with a balance of light and shade offering prevailing breezes over water and gardens.



Computer generated image of a typical Signature Collection terrace at The Royal Atlantis Residences





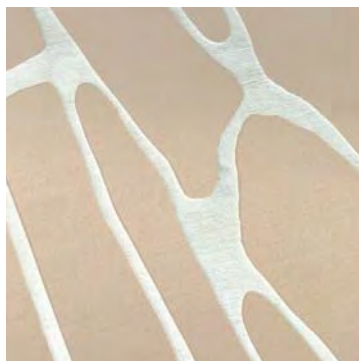
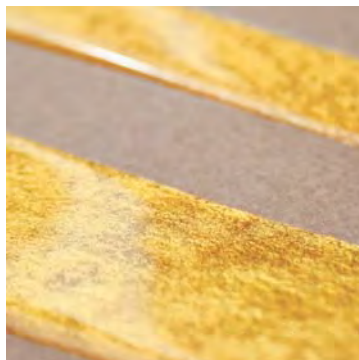


Computer generated images of typical interiors at The Royal Atlantis Residences



Computer generated images of typical interiors at The Royal Atlantis Residences, with art features by Isabelle Poupinel

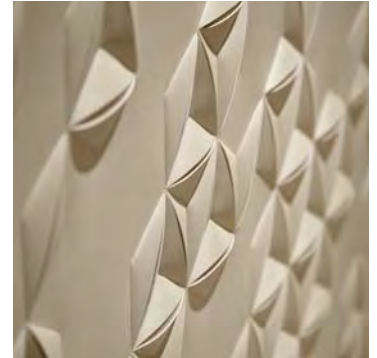




Céline Alexandre (left) & Annie Trussart (right)



Isabelle Poupinel



Helen Amy Murray





Live the dream
TODAY, TOMORROW
OR FOREVER



Computer generated image of the The Royal Atlantis Resort & Residences

The Team

A team of worldwide EXPERTISE & EXCELLENCE

A team with international expertise have come together with a single vision, to create a residential address unsurpassed anywhere in the world.

kerzner®
Operator

KPF
Architects


SYBILLE DE MARGERIE
PARIS
Residential Interior Design

WET
Water Feature Creators

David Mexico Design Group
Sky Pool & Lounge Design


International Sales Agent

The information in this document is indicative and is intended to act as a guide only with regard to the final product. Due to The Royal Atlantis policy of continuous improvement, the finished product may vary from the information provided. This information does not constitute a contract or warranty. Applicants are advised to contact The Royal Atlantis to ascertain the availability of any particular property. Lifestyle and computer generated images are for illustrative purposes only. RERA registration number 1112.