

LAGUNA HOUSE

AT MERRICK PARK
CORAL GABLES, FLORIDA



AMENITIES at LAGUNA HOUSE

BUILDING AMENITIES

- Classic Mediterranean design, 10-story building reinforced concrete construction with textured stucco finish
- Only one and two residences per floor
- Private balconies and terraces accessible from living rooms and bedrooms with architecturally located decorative rails
- 8" and 10" high reinforced sliding glass exterior doors with high energy efficient tinted glass
- Dual elevators, computer-keyed to open in your private residential foyer
- Private garage
- Trash disposal system on each floor
- Summer kitchen with outdoor grill in each private terrace overlooking the Shops of Merrick Park
- Outdoor pool/spa and sun deck

INTERIOR FEATURES

- Smooth finished ceilings, 10' high, except for certain drops to accommodate mechanical installations, with two coats of flat white paint
- Smooth drywall finished walls with one coat of primer
- 8" high interior, solid wood doors, with two coats of semi-gloss white enamel paint
- Luxury lever sets
- High energy efficient, central air conditioning system
- High energy efficient water heater with quick recovery and recirculating pump
- Telephone, Internet, and cable television outlets throughout
- Fire sprinklers, smoke alarms, and state-of-the-art security system providing audio contact with the building's front desk

KITCHEN

- Designer cabinets with spacious pantry
- Thick counter tops with back splash
- Variable speed range hood
- Electric cook top, with radiant elements

- Electric conventional and microwave ovens, with fully programmable cooking cycles
- 42" refrigerator/freezer with automatic ice maker and matching wood cabinet panels
- 24" Dishwasher with three wash levels, 1/2 HP heavy duty food waste disposer
- Stainless steel sink, polished chrome, single lever faucet with pull out spray
- Built-in wine cooler and coffee maker

MASTER BATHROOMS

- Imported marble floor and wet area matching marble vanity tops
- Imported marble shower and glass shower enclosure
- Vanity cabinets featuring designer doors
- His and Hers vanity mirror and European designed sinks
- Free standing deep soaking tub
- Toilet with elongated bowl, white
- Faucets and shower heads with chrome finish

SECONDARY BATHROOMS

- Imported floors and vanity tops
- Vanity cabinets featuring lacquered, high gloss white doors
- Toilet with elongated bowl, white
- China lavatory, white
- Faucets and shower heads with chrome finish
- Full-length vanity mirror

POWDER ROOM

- Imported marble floors
- Toilet with elongated bowl, white
- China lavatory, white
- Faucets with chrome finish

LAUNDRY

- Three speed washer, white. Electric dryer, white
- White, molded polypropylene laundry tub with chrome faucet



LAGUNA HOUSE

GROUND LEVEL | RETAIL SPACE

RETAIL 100
1,113 S.F. | 103.40 M²

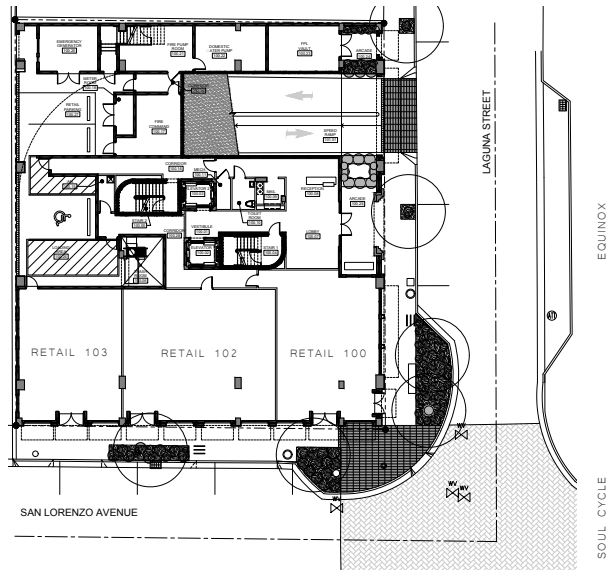
RETAIL 102
1,470 S.F. | 136.56 M²

RETAIL 103
982 S.F. | 91.23 M²

TOTAL
3,565 S.F. | 331.19 M²



NOTES



NEIMAN MARCUS

ORAL REPRESENTATIONS CANNOT BE RELIED UPON AS CORRECTLY STATING REPRESENTATIONS OF THE DEVELOPER. FOR CORRECT REPRESENTATIONS, MAKE REFERENCE TO THIS BROCHURE AND TO THE DOCUMENTS REQUIRED BY SECTION 718.505, FLORIDA STATUTES, TO BE FURNISHED BY A DEVELOPER TO A BUYER OR LESSEE. THE SKETCHES, RENDERINGS, PICTURES AND ILLUSTRATIONS ARE PROPOSED ONLY AND THE DEVELOPER RESERVES THE RIGHT TO MODIFY, REVISE OR WITHDRAW ANY OR ALL OF THE SAME AT ITS SOLE DISCRETION WITHOUT NOTICE. INCLUDING AMENITIES, FEATURES AND SPECIFICATIONS. ANY FURNITURE, APPLIANCES OR DECORATOR ITEMS DEPICTED HEREIN ARE SHOWN FOR ARTISTIC AND ILLUSTRATIVE PURPOSES ONLY AND ARE NOT INCLUDED IN THE PURCHASE AND SALE OF THE RESIDENCE. STATED DIMENSIONS ARE MEASURED TO THE EXTERIOR BOUNDARIES OF THE EXTERIOR WALLS AND THE CENTERLINE OF INTERIOR DEMISING WALLS AND THEREFORE, THE STATED SQUARE FOOTAGE OF THE UNITS MAY VARY FROM THE SQUARE FOOTAGE THAT WOULD BE DETERMINED BY USING THE DESCRIPTION OF THE "UNIT" SET FORTH IN THE DECLARATION.

LAGUNA HOUSE

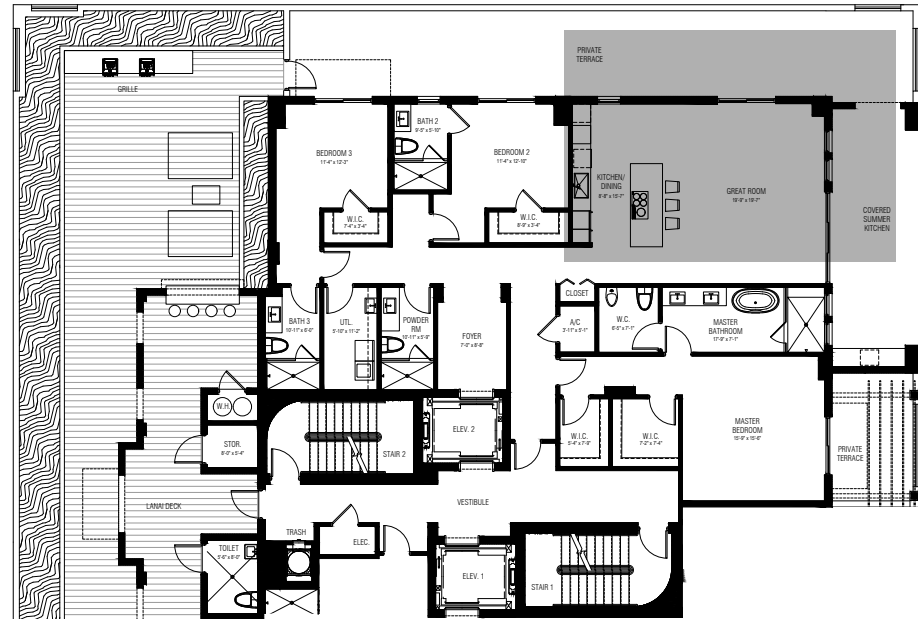
4TH FLOOR | UNIT 401

INTERIOR AND COVERED SUMMER KITCHEN
2,678 S.F. | 248.79 M²

PRIVATE TERRACES
829 S.F. | 77.02 M²

TOTAL
3,507 S.F. | 325.81 M²

NOTES



ORAL REPRESENTATIONS CANNOT BE RELIED UPON AS CORRECTLY STATING REPRESENTATIONS OF THE DEVELOPER. FOR CORRECT REPRESENTATIONS, MAKE REFERENCE TO THIS BROCHURE AND TO THE DOCUMENTS REQUIRED BY SECTION 718.305, FLORIDA STATUTES, TO BE FURNISHED BY A DEVELOPER TO A BUYER OR LESSEE. THE SKETCHES, RENDERINGS, PICTURES AND ILLUSTRATIONS ARE PROPOSED ONLY AND THE DEVELOPER RESERVES THE RIGHT TO MODIFY, REVISE OR WITHDRAW ANY OR ALL OF THE SAME AT ITS SOLE DISCRETION WITHOUT NOTICE. INCLUDING AMENITIES, FEATURES AND SPECIFICATIONS. ANY FURNITURE, APPLIANCES OR DECORATOR ITEMS DEPICTED HEREIN ARE SHOWN FOR ARTISTIC AND ILLUSTRATIVE PURPOSES ONLY AND ARE NOT INCLUDED IN THE PURCHASE AND SALE OF THE RESIDENCE. STATED DIMENSIONS ARE MEASURED TO THE EXTERIOR BOUNDARIES OF THE EXTERIOR WALLS AND THE CENTERLINE OF INTERIOR DEMISING WALLS AND THEREFORE, THE STATED SQUARE FOOTAGE OF THE UNITS MAY VARY FROM THE SQUARE FOOTAGE THAT WOULD BE DETERMINED BY USING THE DESCRIPTION OF THE "UNIT" SET FORTH IN THE DECLARATION.

LAGUNA HOUSE

4TH FLOOR | UNIT 402

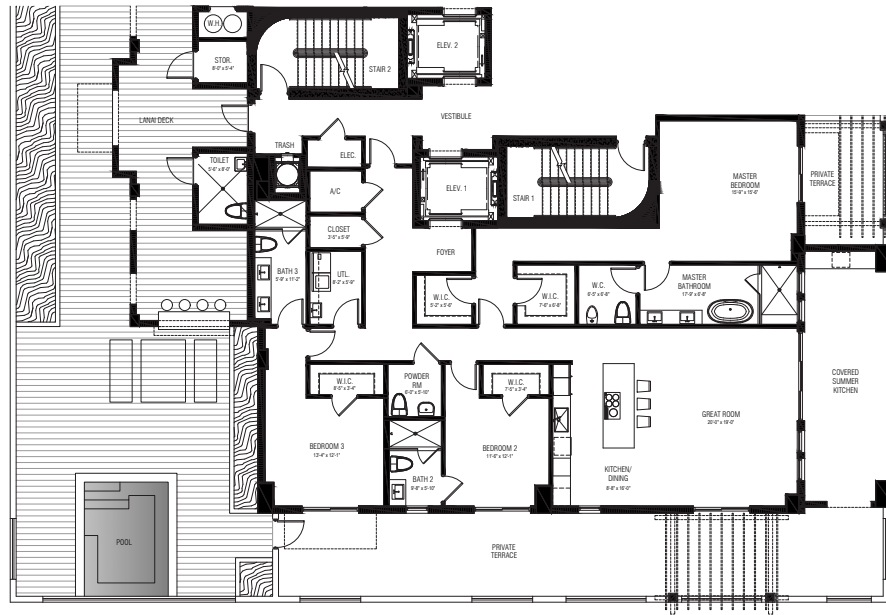
INTERIOR AND COVERED SUMMER KITCHEN
2,642 S.F. | 245.45 M²

PRIVATE TERRACES
829 S.F. | 77.02 M²

TOTAL
3,471 S.F. | 322.47 M²



NOTES



ORAL REPRESENTATIONS CANNOT BE RELIED UPON AS CORRECTLY STATING REPRESENTATIONS OF THE DEVELOPER. FOR CORRECT REPRESENTATIONS, MAKE REFERENCE TO THIS BROCHURE AND TO THE DOCUMENTS REQUIRED BY SECTION 718.305, FLORIDA STATUTES, TO BE FURNISHED BY A DEVELOPER TO A BUYER OR LESSEE. THE SKETCHES, RENDERINGS, PICTURES AND ILLUSTRATIONS ARE PROPOSED ONLY AND THE DEVELOPER RESERVES THE RIGHT TO MODIFY, REVISE OR WITHDRAW ANY OR ALL OF THE SAME AT ITS SOLE DISCRETION WITHOUT NOTICE. INCLUDING AMENITIES, FEATURES AND SPECIFICATIONS. ANY FURNITURE, APPLIANCES OR DECORATOR ITEMS DEPICTED HEREIN ARE SHOWN FOR ARTISTIC AND ILLUSTRATIVE PURPOSES ONLY AND ARE NOT INCLUDED IN THE PURCHASE AND SALE OF THE RESIDENCE. STATED DIMENSIONS ARE MEASURED TO THE EXTERIOR BOUNDARIES OF THE EXTERIOR WALLS AND THE CENTERLINE OF INTERIOR DEMISING WALLS AND THEREFORE, THE STATED SQUARE FOOTAGE OF THE UNITS MAY VARY FROM THE SQUARE FOOTAGE THAT WOULD BE DETERMINED BY USING THE DESCRIPTION OF THE "UNIT" SET FORTH IN THE DECLARATION.

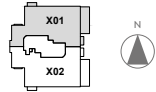
LAGUNA HOUSE

5TH - 9TH FLOOR | UNIT 01

INTERIOR AND COVERED SUMMER KITCHEN
3,000 S.F. | 278.71 M²

PRIVATE TERRACES
86 S.F. | 7.99 M²

TOTAL
3,086 S.F. | 286.07 M²



NOTES



ORAL REPRESENTATIONS CANNOT BE RELIED UPON AS CORRECTLY STATING REPRESENTATIONS OF THE DEVELOPER. FOR CORRECT REPRESENTATIONS, MAKE REFERENCE TO THIS BROCHURE AND TO THE DOCUMENTS REQUIRED BY SECTION 718.305, FLORIDA STATUTES, TO BE FURNISHED BY A DEVELOPER TO A BUYER OR LESSEE. THE SKETCHES, RENDERINGS, PICTURES AND ILLUSTRATIONS ARE PROPOSED ONLY AND THE DEVELOPER RESERVES THE RIGHT TO MODIFY, REVISE OR WITHDRAW ANY OR ALL OF THE SAME AT ITS SOLE DISCRETION WITHOUT NOTICE. INCLUDING AMENITIES, FEATURES AND SPECIFICATIONS. ANY FURNITURE, APPLIANCES, OR DECORATOR ITEMS DEPICTED HEREIN ARE SHOWN FOR ARTISTIC AND ILLUSTRATIVE PURPOSES ONLY AND ARE NOT INCLUDED IN THE PURCHASE AND SALE OF THE RESIDENCE. STATED DIMENSIONS ARE MEASURED TO THE EXTERIOR BOUNDARIES OF THE EXTERIOR WALLS AND THE CENTERLINE OF INTERIOR DEMISING WALLS AND THEREFORE, THE STATED SQUARE FOOTAGE OF THE UNITS MAY VARY FROM THE SQUARE FOOTAGE THAT WOULD BE DETERMINED BY USING THE DESCRIPTION OF THE "UNIT" SET FORTH IN THE DECLARATION.

LAGUNA HOUSE

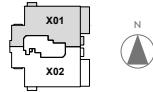
5TH - 9TH FLOOR | UNIT 02

NOTES

INTERIOR AND COVERED SUMMER KITCHEN
2,964 S.F. | 275.36 M²

PRIVATE TERRACES
86 S.F. | 7.99 M²

TOTAL
3,050 S.F. | 283.35 M²



ORAL REPRESENTATIONS CANNOT BE RELIED UPON AS CORRECTLY STATING REPRESENTATIONS OF THE DEVELOPER. FOR CORRECT REPRESENTATIONS, MAKE REFERENCE TO THIS BROCHURE AND TO THE DOCUMENTS REQUIRED BY SECTION 718.505, FLORIDA STATUTES, TO BE FURNISHED BY A DEVELOPER TO A BUYER OR LESSEE. THE SKETCHES, RENDERINGS, PICTURES AND ILLUSTRATIONS ARE PROPOSED ONLY AND THE DEVELOPER RESERVES THE RIGHT TO MODIFY, REVISE OR WITHDRAW ANY OR ALL OF THE SAME AT ITS SOLE DISCRETION WITHOUT NOTICE. INCLUDING AMENITIES, FEATURES AND SPECIFICATIONS. ANY FURNITURE, APPLIANCES, OR DECORATOR ITEMS DEPICTED HEREIN ARE SHOWN FOR ARTISTIC AND ILLUSTRATIVE PURPOSES ONLY AND ARE NOT INCLUDED IN THE PURCHASE AND SALE OF THE RESIDENCE. STATED DIMENSIONS ARE MEASURED TO THE EXTERIOR BOUNDARIES OF THE EXTERIOR WALLS AND THE CENTERLINE OF INTERIOR DEMISING WALLS AND THEREFORE, THE STATED SQUARE FOOTAGE OF THE UNITS MAY VARY FROM THE SQUARE FOOTAGE THAT WOULD BE DETERMINED BY USING THE DESCRIPTION OF THE "UNIT" SET FORTH IN THE DECLARATION.

LAGUNA HOUSE

10TH FLOOR PENTHOUSE | UNIT

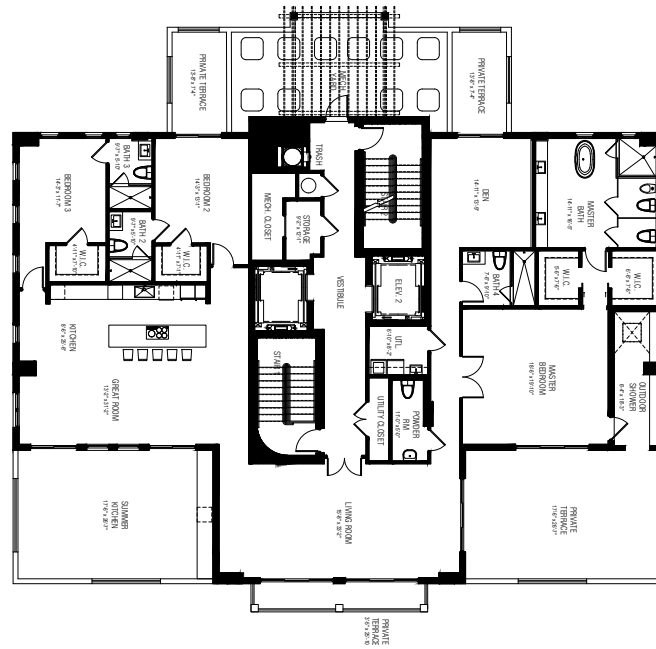
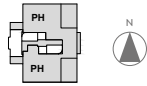
**INTERIOR INCLUDES
OUTDOOR SHOWER**
4,025 S.F. | 373.93 M²

**SUMMER KITCHEN AND
PRIVATE TERRACES**
1,315 S.F. | 122.17 M²

**COMMON ELEMENTS IN-
CLUDES STAIRS, ELEVATORS & MECH YARD**
919 S.F. | 85.38 M²

TOTAL
6,259 S.F. | 581.48 M²

NOTES



ORAL REPRESENTATIONS CANNOT BE RELIED UPON AS CORRECTLY STATING REPRESENTATIONS OF THE DEVELOPER. FOR CORRECT REPRESENTATIONS, MAKE REFERENCE TO THIS BROCHURE AND TO THE DOCUMENTS REQUIRED BY SECTION 718.505, FLORIDA STATUTES, TO BE FURNISHED BY A DEVELOPER TO A BUYER OR LESSEE. THE SKETCHES, RENDERINGS, PICTURES AND ILLUSTRATIONS ARE PROPOSED ONLY AND THE DEVELOPER RESERVES THE RIGHT TO MODIFY, REVISE OR WITHDRAW ANY OR ALL OF THE SAME AT ITS SOLE DISCRETION WITHOUT NOTICE. INCLUDING AMENITIES, FEATURES AND SPECIFICATIONS. ANY FURNITURE, APPLIANCES, OR DECORATOR ITEMS DEPICTED HEREIN ARE SHOWN FOR ARTISTIC AND ILLUSTRATIVE PURPOSES ONLY AND ARE NOT INCLUDED IN THE PURCHASE AND SALE OF THE RESIDENCE. STATED DIMENSIONS ARE MEASURED TO THE EXTERIOR BOUNDARIES OF THE EXTERIOR WALLS AND THE CENTERLINE OF INTERIOR DEMISING WALLS AND THEREFORE, THE STATED SQUARE FOOTAGE OF THE UNITS MAY VARY FROM THE SQUARE FOOTAGE THAT WOULD BE DETERMINED BY USING THE DESCRIPTION OF THE "UNIT" SET FORTH IN THE DECLARATION.