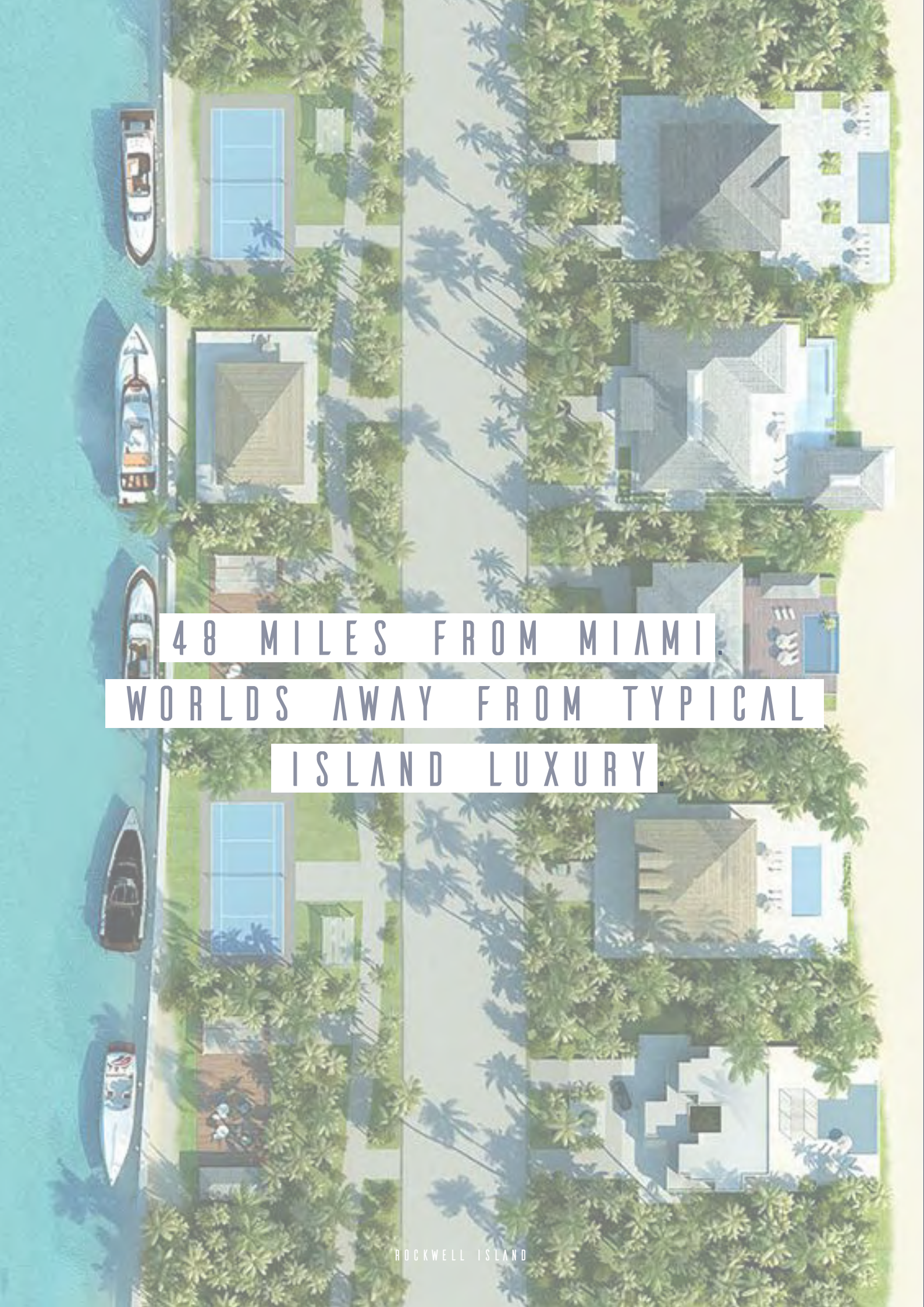




ROCKWELL ISLAND

An Exclusive Beachside Retreat





48 MILES FROM MIAMI.
WORLDS AWAY FROM TYPICAL
ISLAND LUXURY

ROCKWELL ISLAND

ESCAPE ON AN OCEAN BREEZE

An Osprey takes flight,
following the sea as it flows
between South Florida and the
Bahamas... and in the midst of this river of
Turquoise, a tiny island catches its eye. This is
Bimini – the fabled isle of fishermen and
sailors, of tropical travelers and modern-day
jet setters. It is also the home of Rockwell
Island, the unofficial capital of North
Bimini with luxury oceanfront
estates.





THE JEWEL OF THE BAHAMAS

The smallest of the Bahamian island chain, Bimini proves that size is of no importance when it comes to the authentic Caribbean island lifestyle. From the second Bimini crests the Atlantic Ocean horizon, the whole world seems to slow to an unhurried pace.

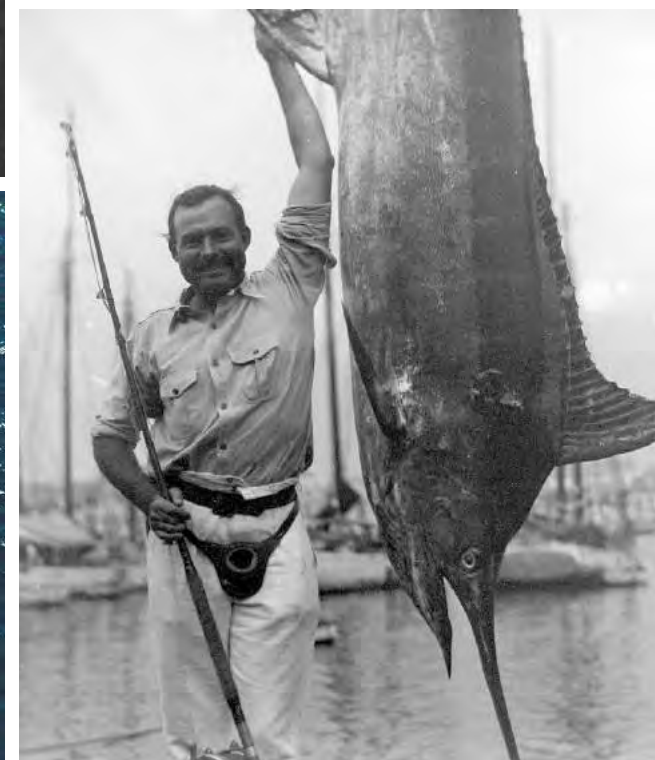
Crystal clear waters reveal ivory sands, brilliant coral, and a vibrant underwater environment filled with some of the world's most beautiful marine creatures. At Rockwell Island, the bounty of the island awaits with palatial beachfront or bayfront estates complete with access to state of the art mooring facilities. Boater or beach lover, golfer or fisherman, sophisticated serenity is yours in a way never before possible.



AN ISLAND OASIS ... ALL YOUR OWN

Anchored by a world-class hotel, private beach, infinity pool, a wide variety of restaurants, a full-service spa, tennis courts and a one of kind marina, the atmosphere is unquestionably five star.

The same holds true for each and every unique and perfectly designed home at Rockwell Island. Whether it be the sleek and stylish lines of the Le Sereno estate, or the warm and exoctic style of the St. Barts estate or, even the rich mixture of natural materials and clean, modern architecture of our Feng Shui personal expression is not just appreciated here...it is welcomed.





Miami

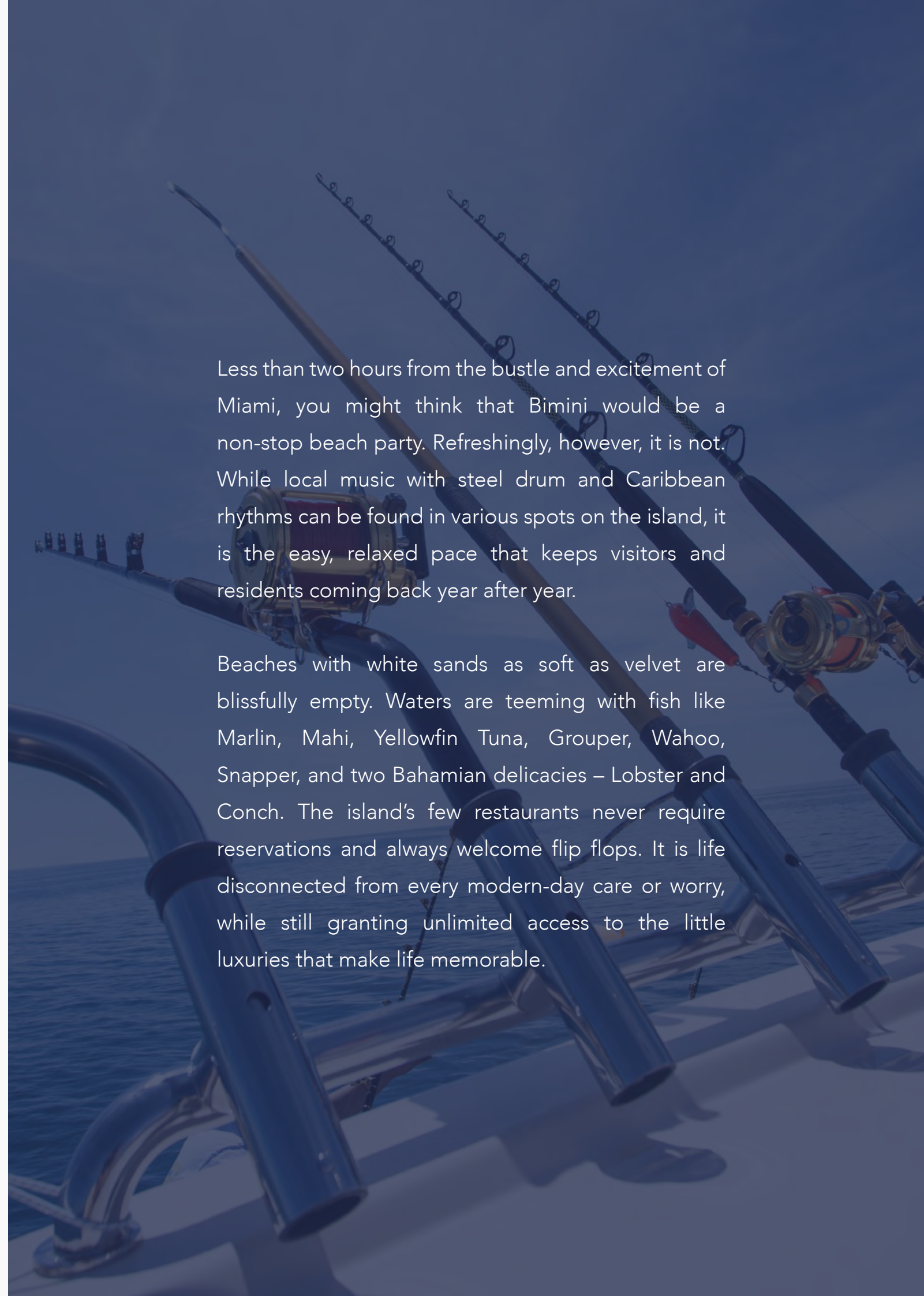
 *Bimini
Islands*

ON A COMPLETELY DIFFERENT WAVELENGTH

CUBA

Less than two hours from the bustle and excitement of Miami, you might think that Bimini would be a non-stop beach party. Refreshingly, however, it is not. While local music with steel drum and Caribbean rhythms can be found in various spots on the island, it is the easy, relaxed pace that keeps visitors and residents coming back year after year.

Beaches with white sands as soft as velvet are blissfully empty. Waters are teeming with fish like Marlin, Mahi, Yellowfin Tuna, Grouper, Wahoo, Snapper, and two Bahamian delicacies – Lobster and Conch. The island's few restaurants never require reservations and always welcome flip flops. It is life disconnected from every modern-day care or worry, while still granting unlimited access to the little luxuries that make life memorable.





LE SERENO

The Le Sereno Estate is the epitome of luxury and beauty inspired by Parisian old world distinction and stylish new world chic. Experience the breathtaking floor plan created to offer the perfect setting for entertaining guests in this West Indy, French style home. The living spaces are open and airy with exterior tubs and showers French island sandbar style home indoor/outdoor spaces that allow you to enjoy the natural feel that only Bimini offers in a private setting. It's no surprise that the Le Sereno is named after one of the coolest hotels in the world. Make a statement about your appreciation for the finer things in life and make the Le Sereno estate your very own.



6,501
TOTAL SQUARE FEET



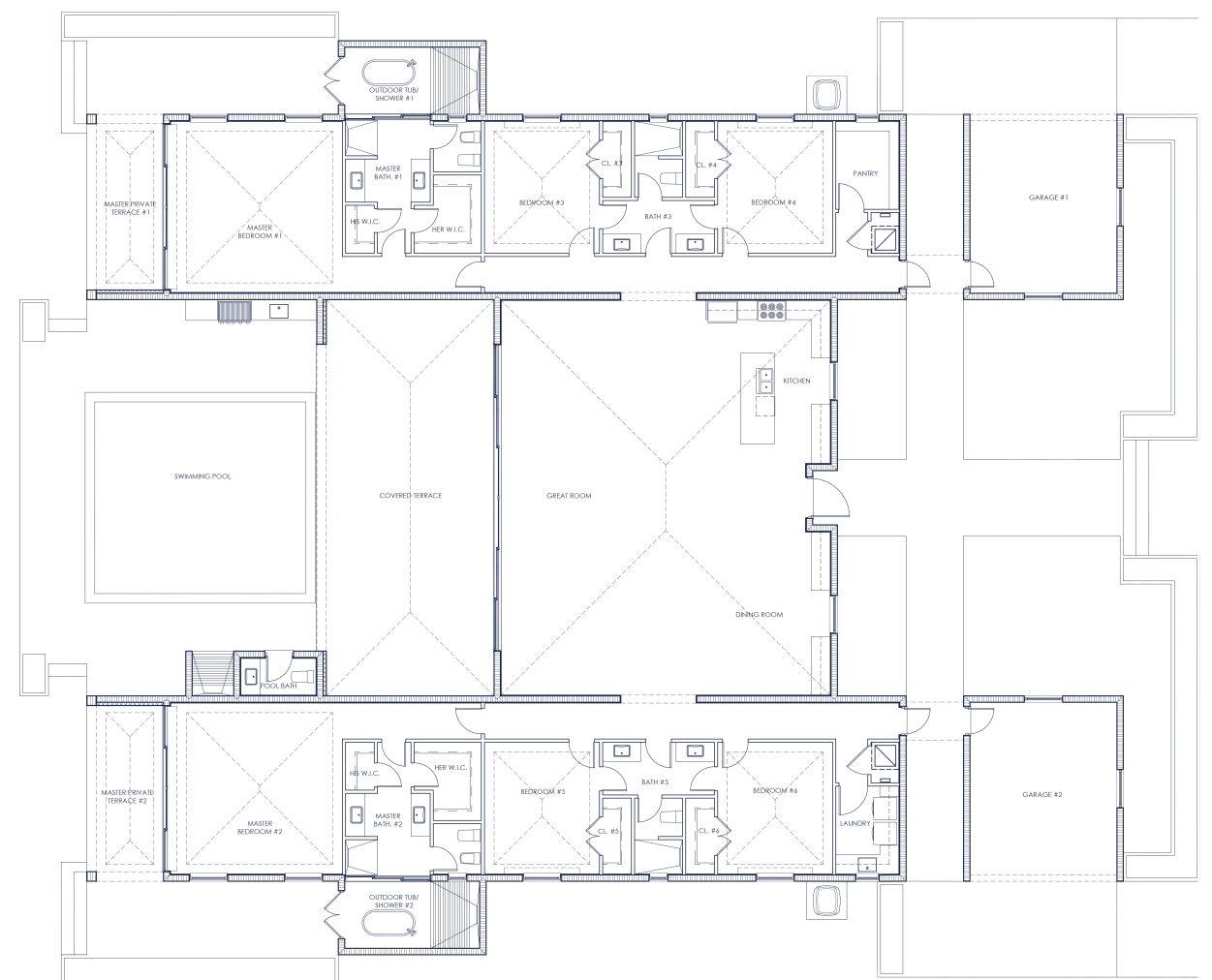
06
BEDROOMS



2
OUTDOOR SHOWERS



4
BATHROOMS



LE SERENO FLOOR PLAN



PLANTATION

The Plantation Estate Home is a modern interpretation of the finest qualities of traditional plantation homes -- a place to gather and enjoy the company of loved ones while maintaining the privacy of its large personal quarters. Boasting luxurious comforts and majestic views of the ocean from every room, the Plantation Estate Home is classic in design yet modern in lifestyle.



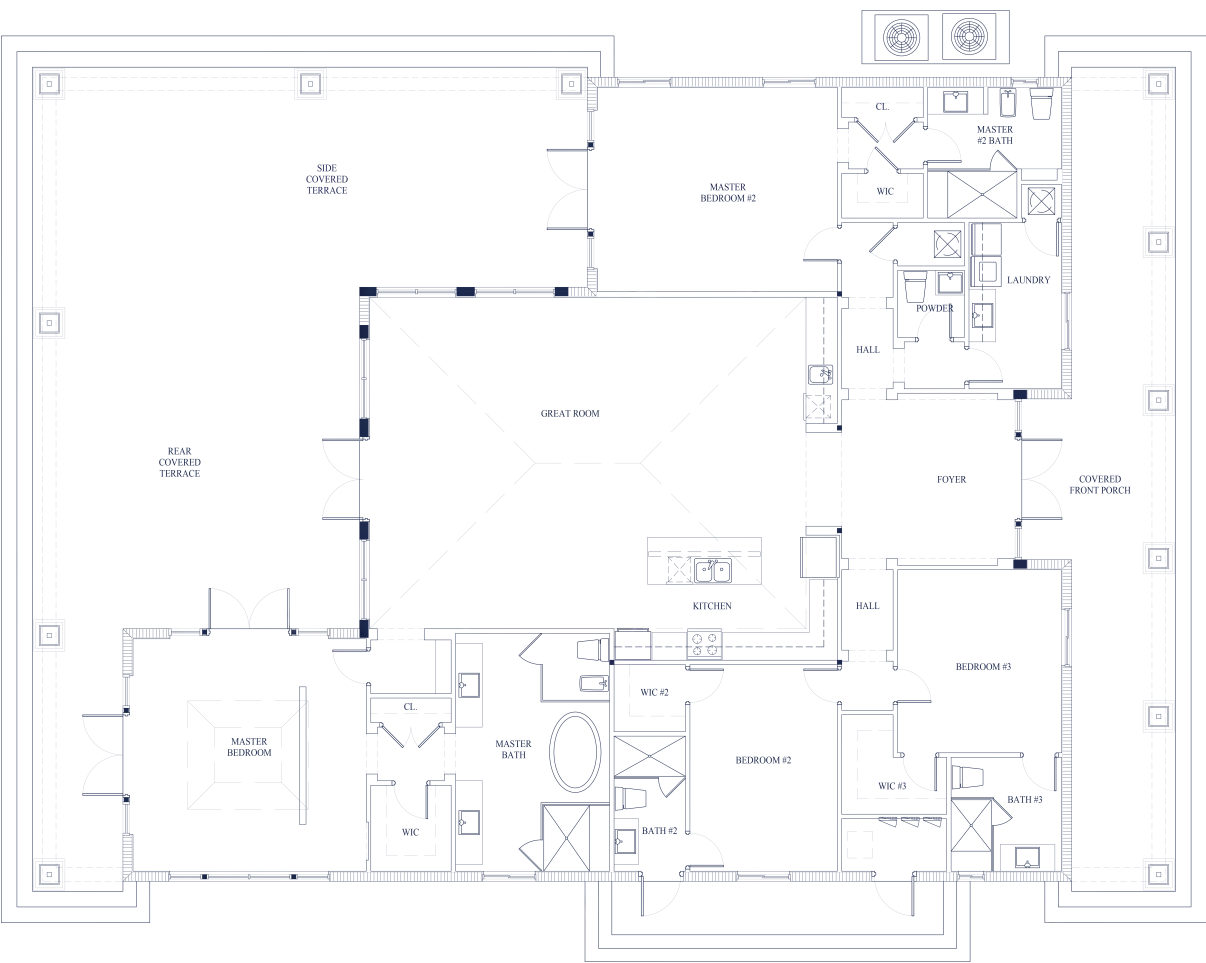
4,588
TOTAL SQUARE FEET



04
BEDROOMS



4 1/2
BATHROOMS



PLANTATION FLOOR PLAN

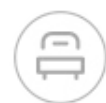


FENG SHUI

The Feng Shui Estate Home encourages oneness with nature. Access the outdoor living areas, the beach, the bay and the gardens from every room in this one-level home. Feng Shui absorbs the organic energy from the sea, sand and sunsets while capturing the gentle Bahamian cross breezes for a seaside retreat like no other.



5,050
TOTAL SQUARE FEET



03
BEDROOMS



3 1/2
BATHROOMS

WITHOUT BUNGALOW



5,653
TOTAL SQUARE FEET

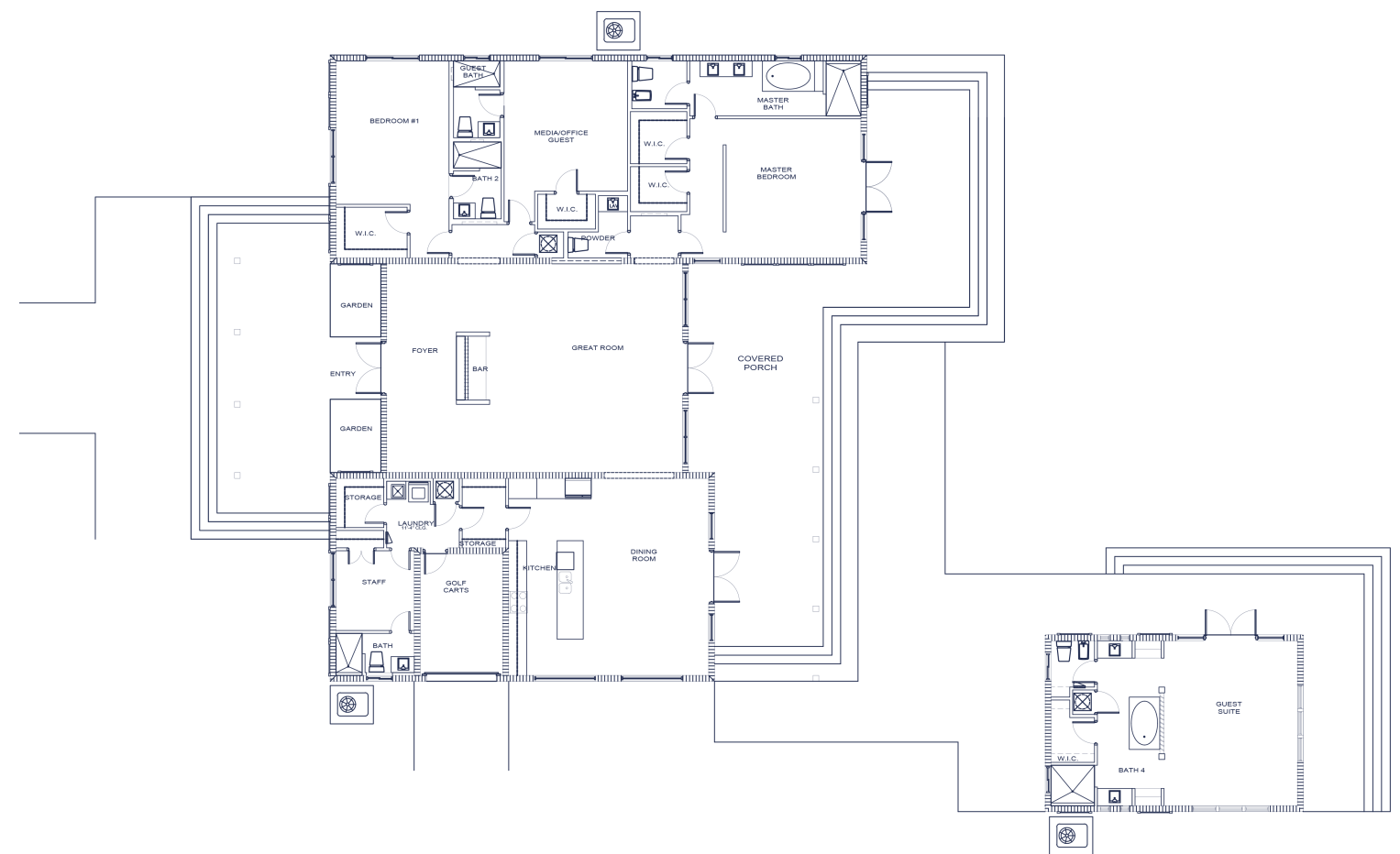


03
BEDROOMS



4 1/2
BATHROOMS

WITH BUNGALOW



FENG SHUI FLOOR PLAN

BUNGALOW



ST. BARTS

The St. Barts Estate embraces the same stylish and fashionable design as the island it was named after. This unit was designed for you to enjoy the indoor and outdoor spaces of your home. Have the option of opening up your living room to outdoor spaces, and joining these two rooms as one. Its whimsical features gives it a feel all its own welcoming you back to encounter the freedom that island life offers. The overall ambiance of the St. Barts is one of simple elegance with modern interiors that leaves you feeling like a jet setting celebrity escaping to your chic enclave, "home away from home". Soothe your mind and enjoy the tranquil waters that only bimini has to offer; sophistication starts in one place... Rockwell Island.



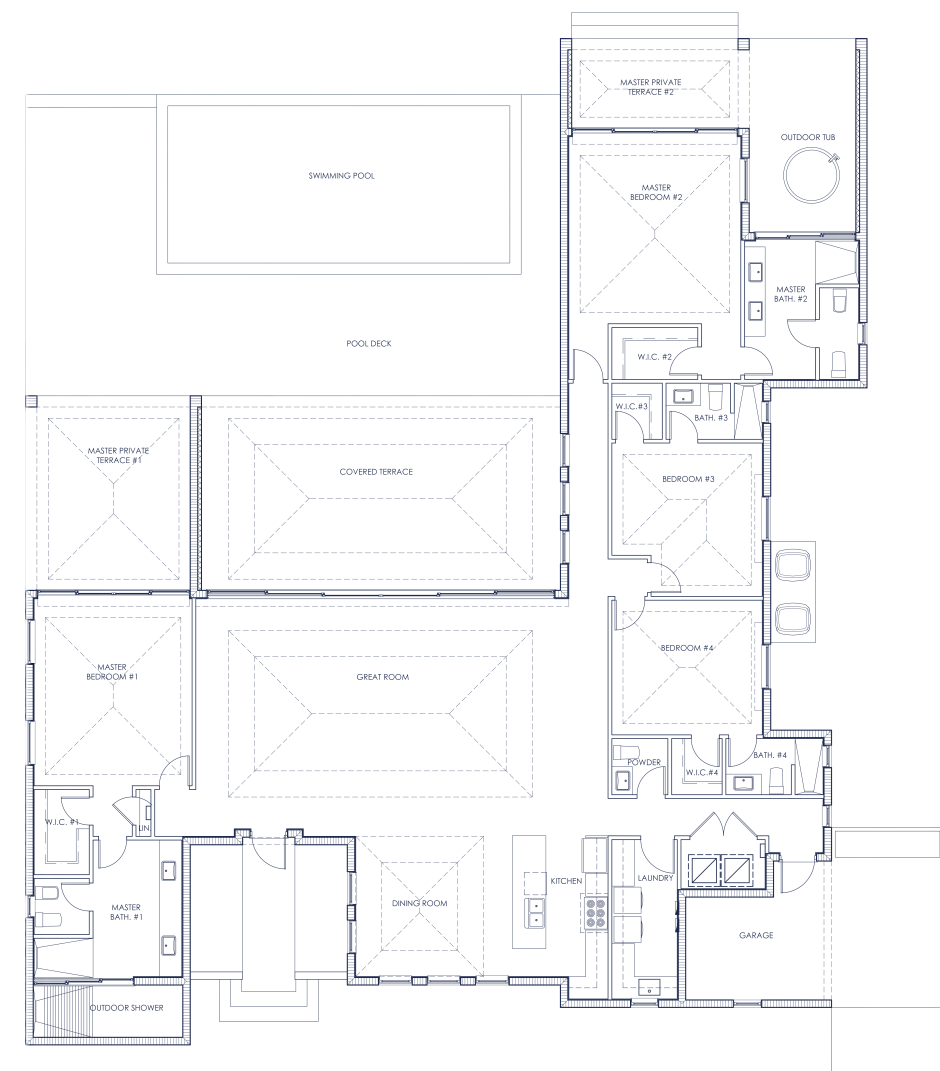
4,367
TOTAL SQUARE FEET



04
BEDROOMS



4 1/2
BATHROOMS



ST BARTS FLOOR PLAN



ROCKWELL ISLAND
An Exclusive Beachside Retreat



FUTURE DEVELOPMENT

PHASE TWO

FUTURE HOTEL

FUTURE ECO THEME PARK

BIMINI BAY
EXCLUSIVE BEACHSIDE RESORT
The Clubhouse

 *Resorts World*
BIMINI
BAHAMAS
RESORT • CASINO • MARINA

