



*CORAL GABLES' MOST EXCLUSIVE
NEW CONDOMINIUM RESIDENCES
REFLECT THE ELEGANCE OF THIS
HISTORIC AND TRANQUIL
COMMUNITY WHILE
INTRODUCING A SLEEK,
CONTEMPORARY SENSIBILITY*



*“THIS IS THE STORY OF
A DREAMER AND HIS
ACCOMPLISHMENTS, OF
A BUILDER WHO MADE A
BEAUTIFUL VISION BECOME
A REALITY, OF A WRITER, A POET,
A PHILOSOPHER, A LOVER OF
THE BEAUTIFUL.”*

*- The Journal of the Historical Association of Southern Florida on Coral Gables
founder George Edgar Merrick, 1942*

*“JUST HOW I CAME TO UTILIZE
THE SPANISH TYPE OF
ARCHITECTURE IN CORAL GABLES,
I CAN HARDLY SAY, EXCEPT THAT
IT ALWAYS SEEMED TO ME TO BE
THE ONLY WAY HOUSES SHOULD
BE BUILT... IN THOSE TROPICAL
SURROUNDINGS.”*

*- George Edgar Merrick,
The New York Times, 1925*



GRACIOUSLY DESIGNED
MEDITERRANEAN-INSPIRED
MODERN CONDOMINIUM UNITS
IN THE HEART OF CORAL GABLES

BILTMORE PARC
CORAL GABLES



BILTMORE PARC
718

BILTMORE PARC INTERTWINES
PAST AND PRESENT WITH RICH
MATERIALS AND COLORS THAT
RESONATE WITH THE LUSH
ENVIRONMENT





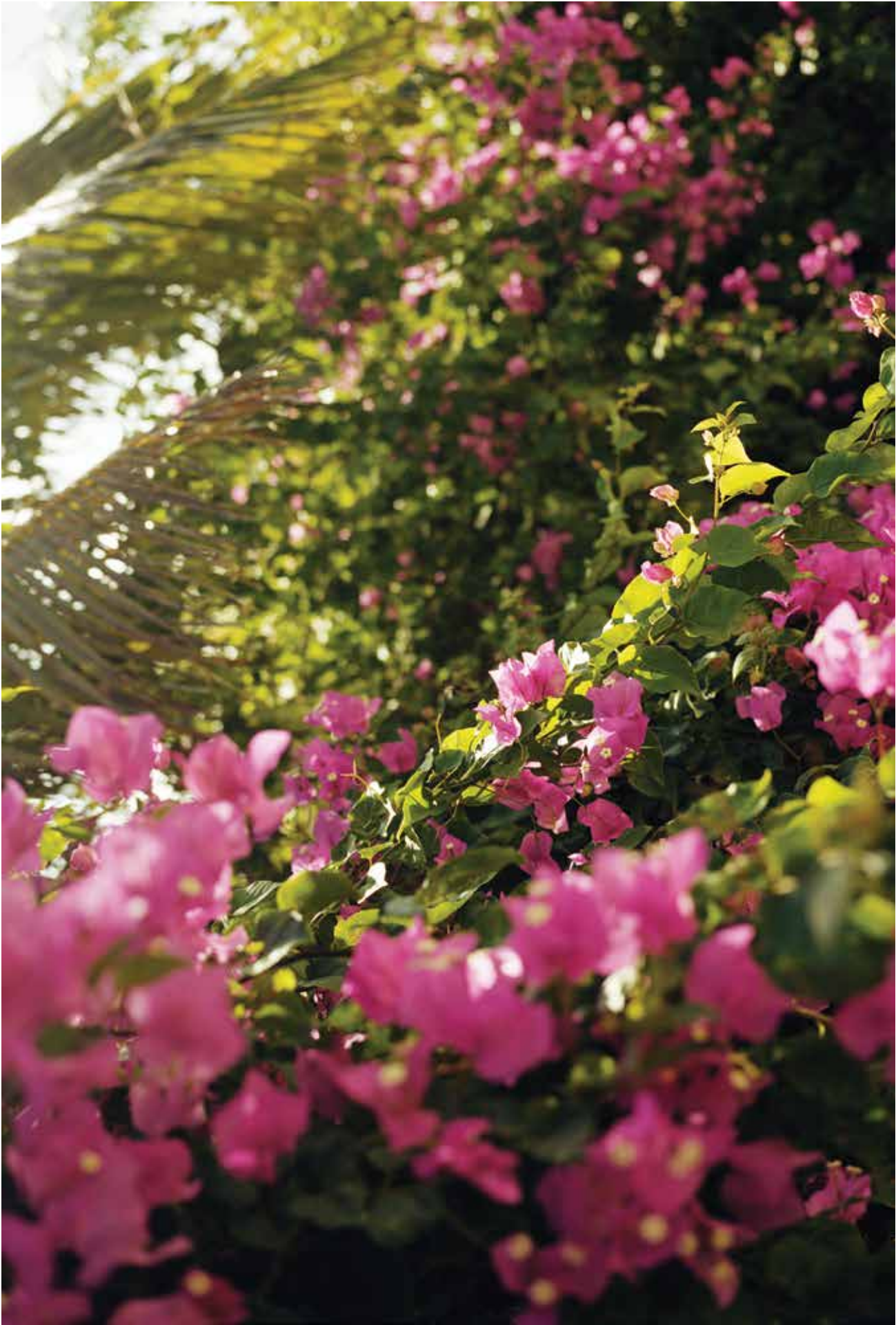
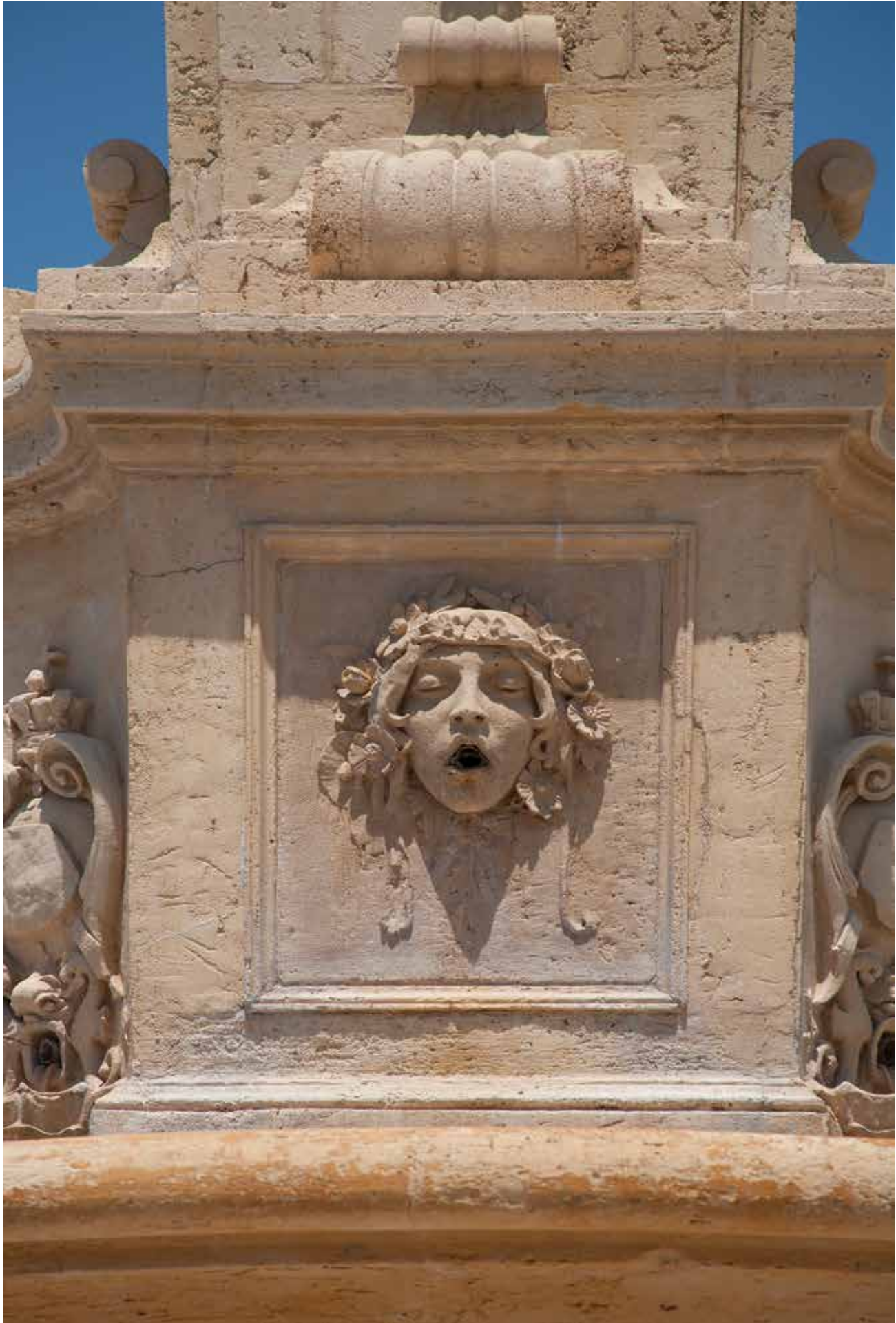
ARTIST'S CONCEPTUAL RENDERING

RESIDENCES

- Contemporary open-plan interior layout with abundant natural light
- Generously sized private terraces with NanaWall folding glass walls¹ offer an elegant outdoor living and dining space
- Custom-crafted European-style kitchens with premium German stainless steel appliances
- Walk-in laundry room in every residence
- Expansive beautifully designed master suite with morning kitchen
- Spacious walk-in closets
- Oversized spa-inspired bathrooms with separate shower and bathtub
- Generator ready
- 2 parking spaces
- Biltmore Parc will offer 32 exclusive and luxurious residences in total:

4 Units of 2,313 sq. ft. 3 Bedrooms + Den + 3 1/2 Baths
4 Units of 2,422 sq. ft. 3 Bedrooms + Den + 3 1/2 Baths
4 Units of 2,358 sq. ft. 3 Bedrooms + Den + 3 1/2 Baths
8 Units of 1,976 sq. ft. 2 Bedrooms + Den + 2 1/2 Baths
8 Units of 2,120 sq. ft. 2 Bedrooms + Den + 2 1/2 Baths
4 Units of 1,649 sq. ft. 2 Bedrooms + 2 Baths

¹ Main terraces only





ARTIST'S CONCEPTUAL RENDERING



ARTIST'S CONCEPTUAL RENDERING

Contemporary interiors by Avanzato Design feature
the highest quality finishes and craftsmanship.

ARTIST'S CONCEPTUAL RENDERING





ARTIST'S CONCEPTUAL RENDERING



ARTIST'S CONCEPTUAL RENDERING

BUILDING

- 32 exclusive two and three-bedroom residences, all with a den and expansive private terraces
- Private elevator access to the foyer of every residence
- Luxurious lobby by renowned interior designer Vincenzo Avanzato
- Two elegantly appointed multipurpose lounge areas adaptable for use as a business center, meeting venue, game room, or reading lounge



SERVICES

- 24/7 concierge provides personalized assistance to residents for everything from dining and event reservations to in-residence services

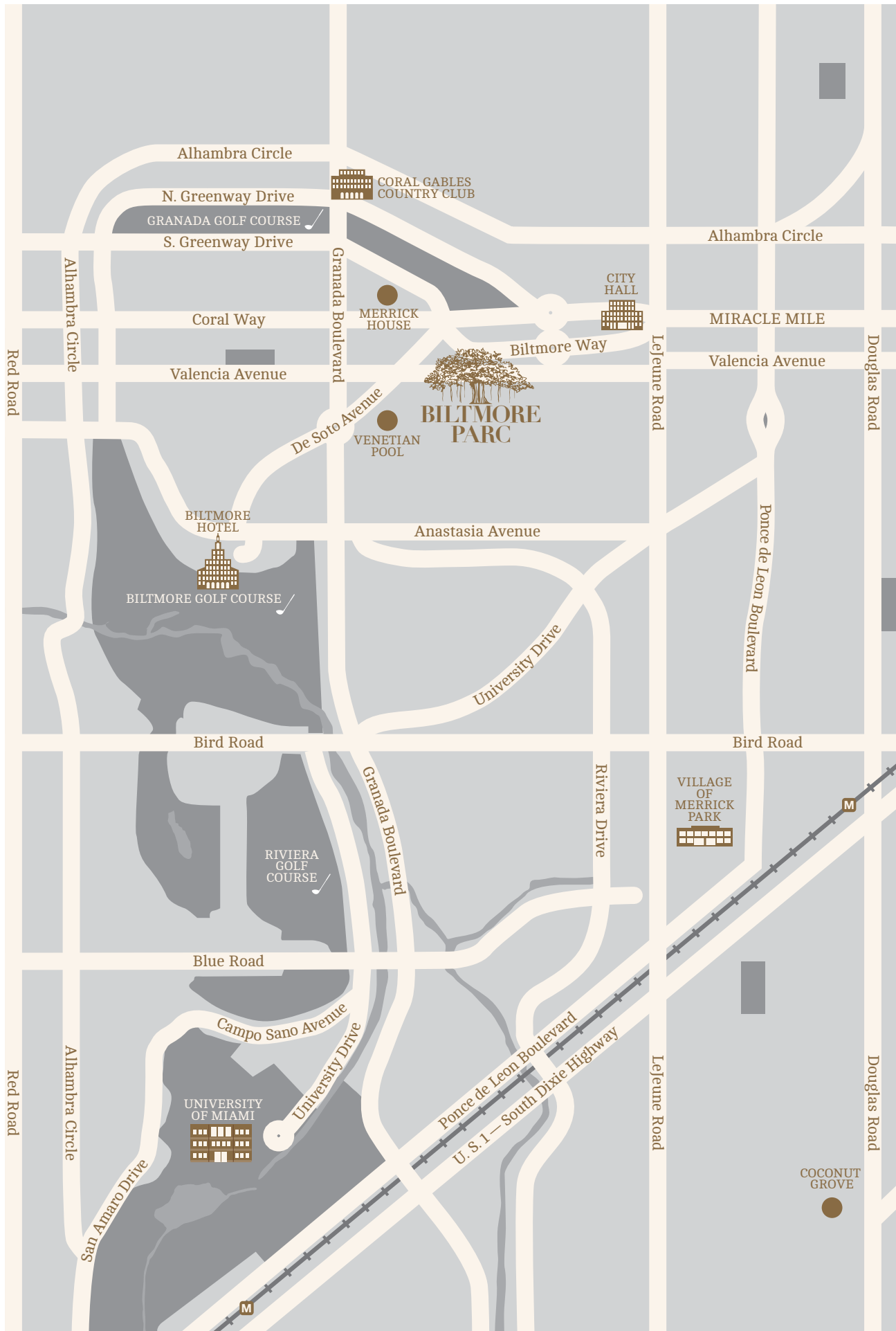
LUXURIOUS AND
EXCLUSIVE LOBBY



ARTIST'S CONCEPTUAL RENDERING

LUSH GREEN AVENUES, HISTORIC
CULTURAL TREASURES, AND AN
ELEGANT LIFESTYLE – CORAL
GABLES IS TRULY
“THE CITY BEAUTIFUL”

CORAL GABLES
NEIGHBORHOOD



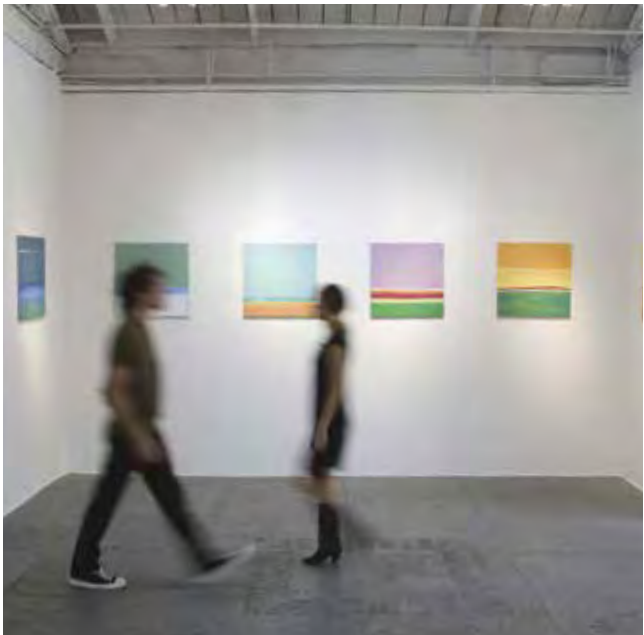
AT BILTMORE PARC LOCATION DICTATES ITS VALUE

A UNIQUE OPPORTUNITY TO
ENJOY LIVING IN THE HEART
OF THE EXCLUSIVE BILTMORE
SECTION OF CORAL GABLES,
WITHIN WALKING DISTANCE
OF THE CORAL GABLES
BUSINESS DISTRICT, MIRACLE
MILE, RIVIERA CLUB, AND
THE BILTMORE HOTEL. FROM
GOLF TO SHOPPING & DINING,
RESIDENTS OF BILTMORE PARC
WILL ENJOY THE PRIVILEGES
OF LIVING IN A TRANQUIL
AND GREEN SETTING
JUST STEPS AWAY FROM
THE URBAN CORE.



FROM LUXURY BOUTIQUES,
ART GALLERIES, AND ELEGANT
RESTAURANTS, TO EUROPEAN-
STYLE OUTDOOR CAFÉS, CORAL
GABLES OFFERS A BEAUTIFUL
LIFESTYLE

A rich selection of opportunities for art, culture, and shopping in Coral Gables includes the Lowe Art Museum and the Fairchild Tropical Botanic Garden as well as dozens of boutiques and galleries. In addition, talented chefs and creative restaurateurs have brought an increasingly tantalizing array of fine and casual dining destinations, offering residents of Biltmore Parc exceptional options across a number of culinary traditions.



*“WE HAVE HAND-SELECTED A
TEAM THAT OFFERS EXCEPTIONAL
TALENT AND VISION.”*

TODAY’S VISIONARIES
Biltmore Parc Team



*“THE STRENGTH OF OUR TEAM
IS EVIDENCED THROUGH ITS
WEALTH OF EXPERIENCE,
LEADERSHIP AND CHARACTER
CULMINATING IN AN UNMATCHED
VISION FOR DESIGN AND
DEVELOPMENT.”*

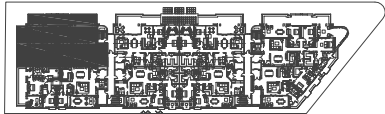
Biltmore Parc is being designed and developed by a team with a wealth of experience in the realm of luxury residential properties in premier communities in the United States and abroad. Since 2010, Venezuelan entrepreneur Alirio Torrealba has distinguished himself with the development of luxury residential projects in the most exclusive areas of the capital city of Caracas. He has also brought his innovative approach and commitment to quality to top brands across several markets.

To carry this elegant aesthetic throughout the interiors, the developers selected world renowned luxury avant-garde interior design firm Avanzato Design. Founder Vincenzo Avanzato has over 25 years of experience bringing together the world’s finest tastes, styles, and trends for discerning clients who desire the highest

standards of excellence in creative interior design solutions, craftsmanship, and luxury. To create a property of true architectural distinction, Torrealba retained the talent of Bellin & Pratt Architects, LLC. The firm’s specialization in the Coral Gables Mediterranean style of building will ensure that Biltmore Parc fits into the historic urban context and character of the city while also establishing a sense of modernity.

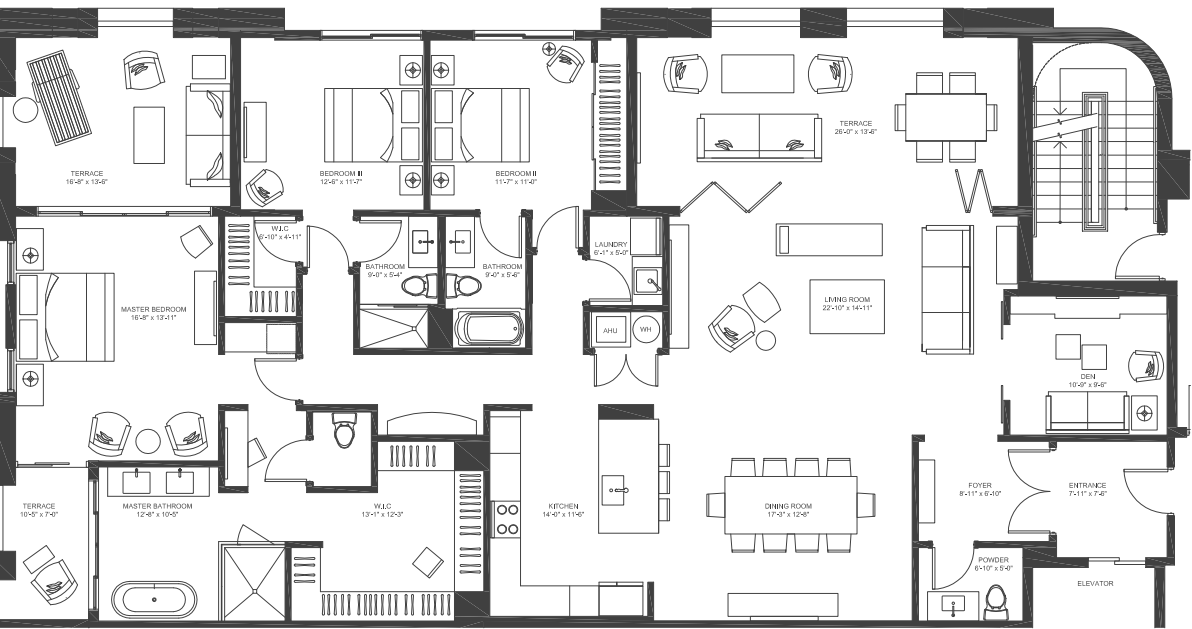
Biltmore Parc also benefits from the expertise of Jose Luis Bueno and Luis Arevalo, who from the beginning have made great contributions. Both have a history of leadership in planning, development and construction in the United States. Their expertise in the implementation of successful marketing and communication activities sets them apart within the local real estate market.

FLOOR PLANS
Biltmore Parc Residences

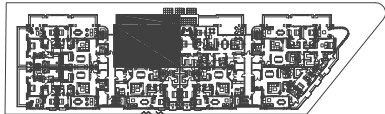


UNIT 1

3 Bedrooms 3 1/2 Bathrooms & Den		301	401	501
	A/C INTERIOR AREA	2,313 sq. ft.	2,313 sq. ft.	2,313 sq. ft.
	TERRACE AREA	669 sq. ft.	627 sq. ft.	627 sq. ft.
	TOTAL RESIDENCE	2,982 sq. ft.	2,940 sq. ft.	2,940 sq. ft.

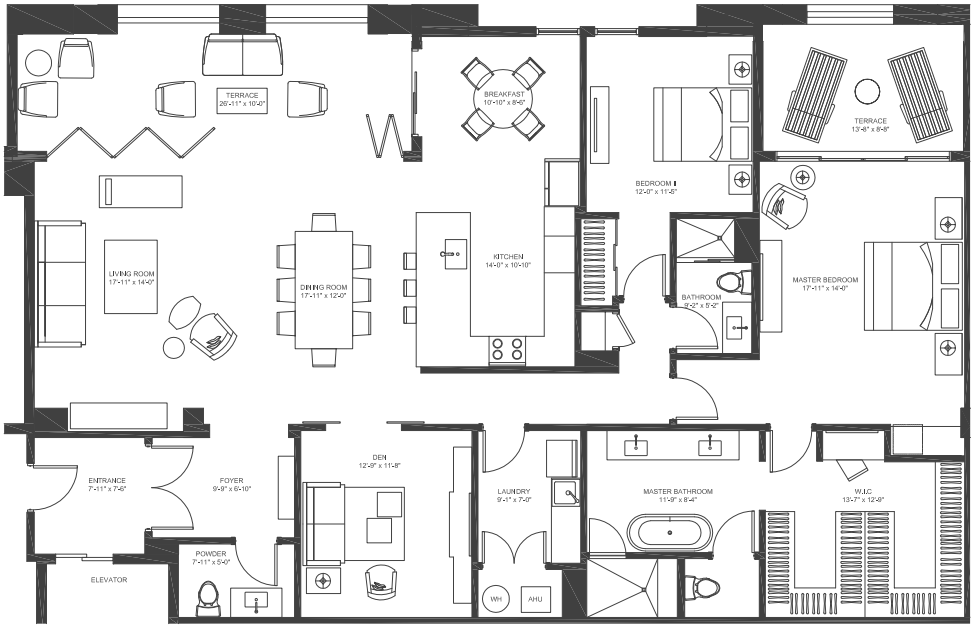


There are various methods for calculating the square footage of a unit and depending on the method of calculation, the quoted square footage of a Unit in an advertising materials may vary from the square footage of a Unit as stated or described in the Prospectus and the Declaration. The dimensions of the Unit shown in this floor plan have been calculated from the exterior boundaries of the exterior walls to the centerline of the interior walls, including common elements such as structural walls and other Interior structural components of the building and in fact vary from the dimensions that result by using the description of the “Unit” and dimensions set forth in the Prospectus and the Declaration. The area of the Unit, determined in accordance with “Unit” as defined in the Prospectus and in the Declaration is less than the square footage reflected here. The configuration, allocation and use of space or the floor plan design may vary from that depicted here or in the Prospectus and/or declaration because the Developer reserves the right in the Prospectus to make architectural, engineerign, design, dimension, specification and floor plan changes at any time, in the Developer's dircetion, without notice to unit buyers. The measurement of any room in this floor plan is generally taken at the greatest points of each given room (as if the room were a perfect rectangle) without regard for any cutouts. Accordingly, the area the area of the actual room will typically be smaller than the product obtained by multiplying the lenght times width stated here. The furnishings, appliances, fixtures and decor illustrated are not included with the purchase of the Unit. See Prospectus for information regarding what is offered with the Unit and the calculation of the Unit square footage and dimensions.

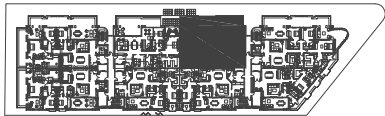


UNIT 2

2 Bedrooms, 2 1/2 Bathrooms & Den		302	402	502
	A/C INTERIOR AREA	2,120 sq. ft.	2,120 sq. ft.	2,120 sq. ft.
	TERRACE AREA	430 sq. ft.	397 sq. ft.	397 sq. ft.
	TOTAL RESIDENCE	2,550 sq. ft.	2,517 sq. ft.	2,517 sq. ft.

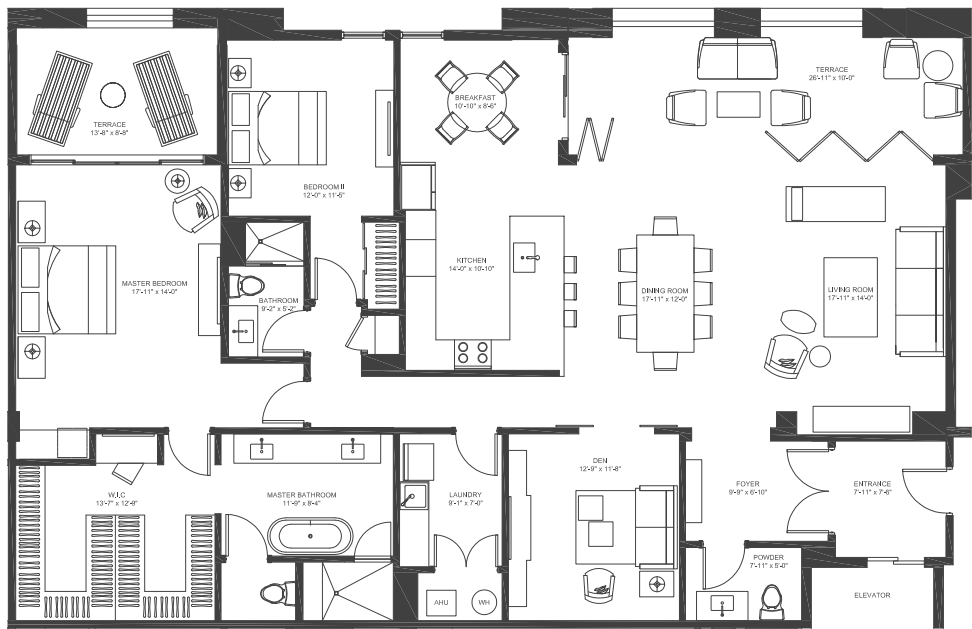


There are various methods for calculating the square footage of a unit and depending on the method of calculation, the quoted square footage of a Unit in an advertising materials may vary from the square footage of a Unit as stated or described in the Prospectus and the Declaration. The dimensions of the Unit shown in this floor plan have been calculated from the exterior boundaries of the exterior walls to the centerline of the interior walls, including common elements such as structural walls and other Interior structural components of the building and in fact vary from the dimensions that result by using the description of the “Unit” and dimensions set forth in the Prospectus and the Declaration. The area of the Unit, determined in accordance with “Unit” as defined in the Prospectus and in the Declaration is less than the square footage reflected here. The configuration, allocation and use of space or the floor plan design may vary from that depicted here or in the Prospectus and/or declaration because the Developer reserves the right in the Prospectus to make architectural, engineerign, design, dimension, specification and floor plan changes at any time, in the Developer's dircetion, without notice to unit buyers. The measurement of any room in this floor plan is generally taken at the greatest points of each given room (as if the room were a perfect rectangle) without regard for any cutouts. Accordingly, the area the area of the actual room will typically be smaller than the product obtained by multiplying the lenght times width stated here. The furnishings, appliances, fixtures and decor illustrated are not included with the purchase of the Unit. See Prospectus for information regarding what is offered with the Unit and the calculation of the Unit square footage and dimensions.

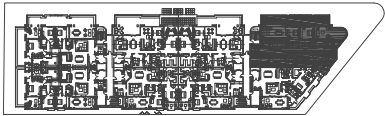


UNIT 3

2 Bedrooms, 2 1/2 Bathrooms & Den		303	403	503
	A/C INTERIOR AREA	2,120 sq. ft.	2,120 sq. ft.	2,120 sq. ft.
	TERRACE AREA	430 sq. ft.	397 sq. ft.	397 sq. ft.
	TOTAL RESIDENCE	2,550 sq. ft.	2,517 sq. ft.	2,517 sq. ft.

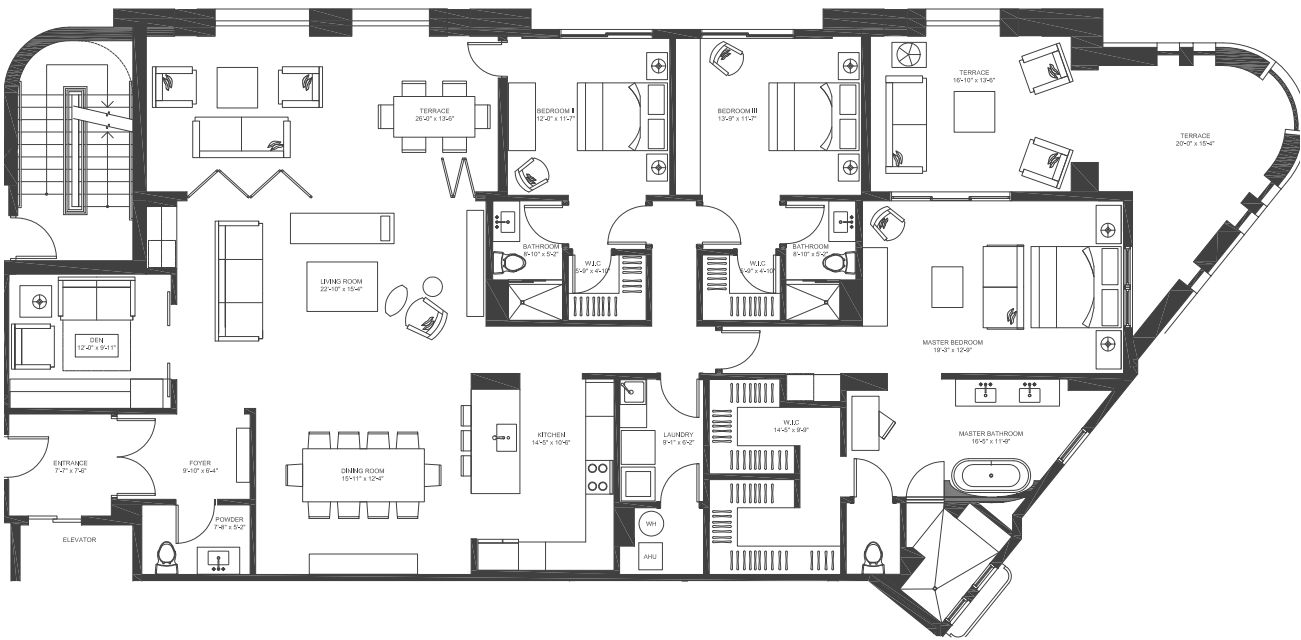


There are various methods for calculating the square footage of a unit and depending on the method of calculation, the quoted square footage of a Unit in an advertising materials may vary from the square footage of a Unit as stated or described in the Prospectus and the Declaration. The dimensions of the Unit shown in this floor plan have been calculated from the exterior boundaries of the exterior walls to the centerline of the interior walls, including common elements such as structural walls and other Interior structural components of the building and in fact vary from the dimensions that result by using the description of the "Unit" and dimensions set forth in the Prospectus and the Declaration. The area of the Unit, determined in accordance with "Unit" as defined in the Prospectus and in the Declaration is less than the square footage reflected here. The configuration, allocation and use of space or the floor plan design may vary from that depicted here or in the Prospectus and/or declaration because the Developer reserves the right in the Prospectus to make architectural, engineerign, design, dimension, specification and floor plan changes at any time, in the Developer's dircetion, without notice to unit buyers. The measurement of any room in this floor plan is generally taken at the greatest points of each given room (as if the room were a perfect rectangle) without regard for any cutouts. Accordingly, the area the area of the actual room will typically be smaller than the product obtained by multiplying the lenght times width stated here. The furnishings, appliances, fixtures and decor illustrated are not included with the purchase of the Unit. See Prospectus for information regarding what is offered with the Unit and the calculation of the Unit square footage and dimensions.

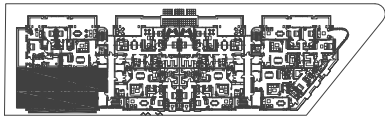


UNIT 4

3 Bedrooms, 3 1/2 Bathrooms & Den		304	404	504
	A/C INTERIOR AREA	2,422 sq. ft.	2,422 sq. ft.	2,422 sq. ft.
	TERRACE AREA	806 sq. ft.	776 sq. ft.	776 sq. ft.
	TOTAL RESIDENCE	3,228 sq. ft.	3,198 sq. ft.	3,198 sq. ft.

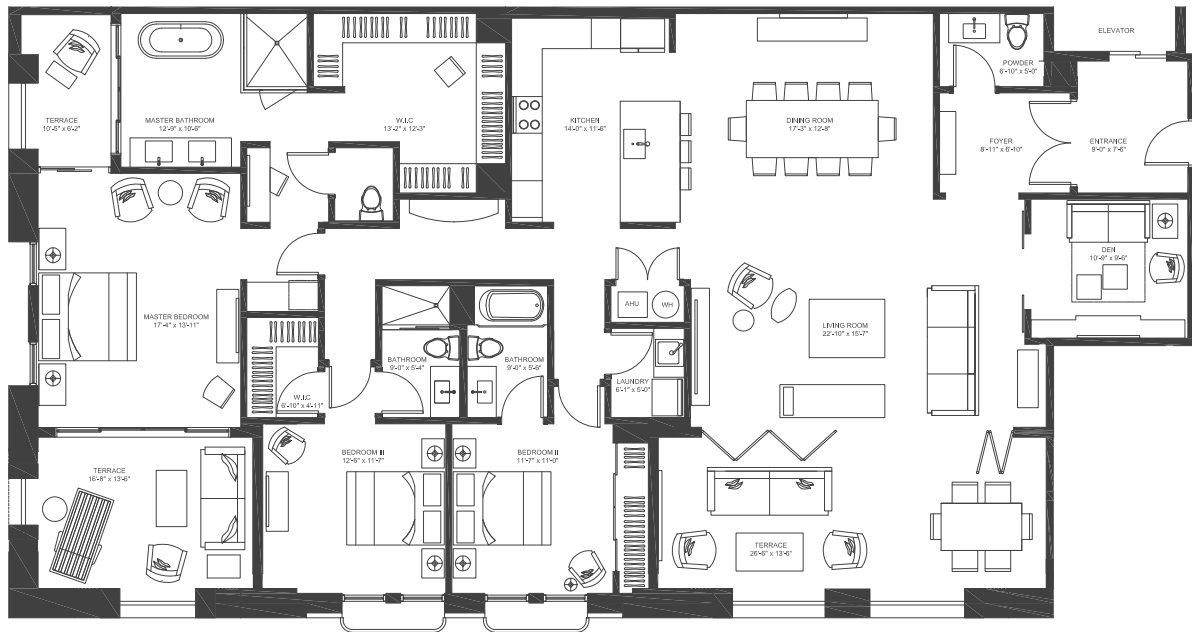


There are various methods for calculating the square footage of a unit and depending on the method of calculation, the quoted square footage of a Unit in an advertising materials may vary from the square footage of a Unit as stated or described in the Prospectus and the Declaration. The dimensions of the Unit shown in this floor plan have been calculated from the exterior boundaries of the exterior walls to the centerline of the interior walls, including common elements such as structural walls and other Interior structural components of the building and in fact vary from the dimensions that result by using the description of the "Unit" and dimensions set forth in the Prospectus and the Declaration. The area of the Unit, determined in accordance with "Unit" as defined in the Prospectus and in the Declaration is less than the square footage reflected here. The configuration, allocation and use of space or the floor plan design may vary from that depicted here or in the Prospectus and/or declaration because the Developer reserves the right in the Prospectus to make architectural, engineerign, design, dimension, specification and floor plan changes at any time, in the Developer's dircetion, without notice to unit buyers. The measurement of any room in this floor plan is generally taken at the greatest points of each given room (as if the room were a perfect rectangle) without regard for any cutouts. Accordingly, the area the area of the actual room will typically be smaller than the product obtained by multiplying the lenght times width stated here. The furnishings, appliances, fixtures and decor illustrated are not included with the purchase of the Unit. See Prospectus for information regarding what is offered with the Unit and the calculation of the Unit square footage and dimensions.

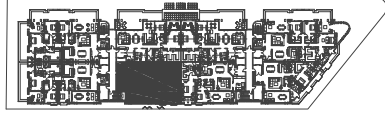


UNIT 5

3 Bedrooms, 3 1/2 Bathrooms & Den		305	405	505
	A/C INTERIOR AREA	2,358 sq. ft.	2,358 sq. ft.	2,358 sq. ft.
	TERRACE AREA	621 sq. ft.	580 sq. ft.	580 sq. ft.
	TOTAL RESIDENCE	2,979 sq. ft.	2,938 sq. ft.	2,938 sq. ft.

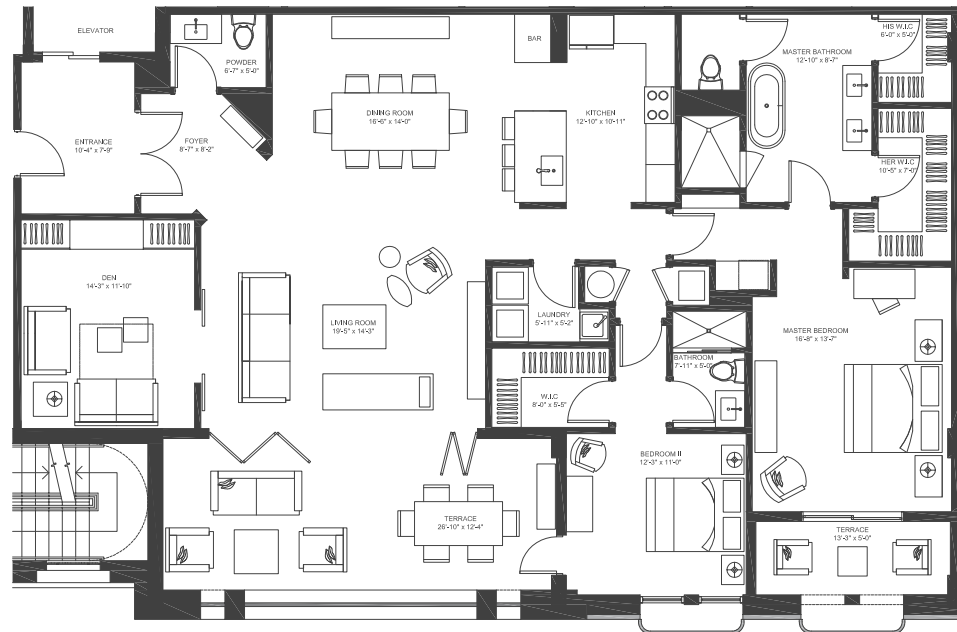


There are various methods for calculating the square footage of a unit and depending on the method of calculation, the quoted square footage of a Unit in an advertising materials may vary from the square footage of a Unit as stated or described in the Prospectus and the Declaration. The dimensions of the Unit shown in this floor plan have been calculated from the exterior boundaries of the exterior walls to the centerline of the interior walls, including common elements such as structural walls and other Interior structural components of the building and in fact vary from the dimensions that result by using the description of the “Unit” and dimensions set forth in the Prospectus and the Declaration. The area of the Unit, determined in accordance with “Unit” as defined in the Prospectus and in the Declaration is less than the square footage reflected here. The configuration, allocation and use of space or the floor plan design may vary from that depicted here or in the Prospectus and/or declaration because the Developer reserves the right in the Prospectus to make architectural, engineerign, design, dimension, specification and floor plan changes at any time, in the Developer's dircetion, without notice to unit buyers. The measurement of any room in this floor plan is generally taken at the greatest points of each given room (as if the room were a perfect rectangle) without regard for any cutouts. Accordingly, the area the area of the actual room will typically be smaller than the product obtained by multiplying the lenght times width stated here. The furnishings, appliances, fixtures and decor illustrated are not included with the purchase of the Unit. See Prospectus for information regarding what is offered with the Unit and the calculation of the Unit square footage and dimensions.



UNIT 6

2 Bedrooms, 2 1/2 Bathrooms & Den		206	306	406	506
	A/C INTERIOR AREA	1,976 sq. ft.	1,976 sq. ft.	1,976 sq. ft.	1,976 sq. ft.
	TERRACE AREA	449 sq. ft.	417 sq. ft.	400 sq. ft.	400 sq. ft.
	TOTAL RESIDENCE	2,425 sq. ft.	2,393 sq. ft.	2,376 sq. ft.	2,376 sq. ft.

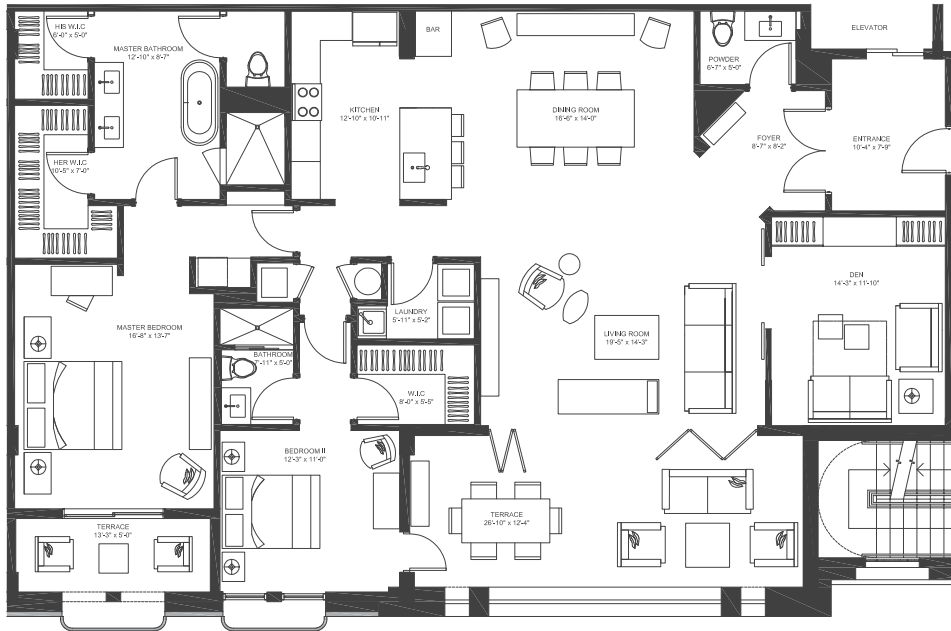


There are various methods for calculating the square footage of a unit and depending on the method of calculation, the quoted square footage of a Unit in an advertising materials may vary from the square footage of a Unit as stated or described in the Prospectus and the Declaration. The dimensions of the Unit shown in this floor plan have been calculated from the exterior boundaries of the exterior walls to the centerline of the interior walls, including common elements such as structural walls and other Interior structural components of the building and in fact vary from the dimensions that result by using the description of the “Unit” and dimensions set forth in the Prospectus and the Declaration. The area of the Unit, determined in accordance with “Unit” as defined in the Prospectus and in the Declaration is less than the square footage reflected here. The configuration, allocation and use of space or the floor plan design may vary from that depicted here or in the Prospectus and/or declaration because the Developer reserves the right in the Prospectus to make architectural, engineerign, design, dimension, specification and floor plan changes at any time, in the Developer's dircetion, without notice to unit buyers. The measurement of any room in this floor plan is generally taken at the greatest points of each given room (as if the room were a perfect rectangle) without regard for any cutouts. Accordingly, the area the area of the actual room will typically be smaller than the product obtained by multiplying the lenght times width stated here. The furnishings, appliances, fixtures and decor illustrated are not included with the purchase of the Unit. See Prospectus for information regarding what is offered with the Unit and the calculation of the Unit square footage and dimensions.

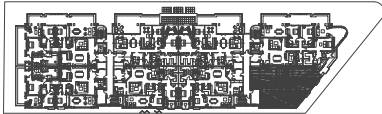


UNIT 7

2 Bedrooms, 2 1/2 Bathrooms & Den		207	307	407	507
	A/C INTERIOR AREA	1,976 sq. ft.	1,976 sq. ft.	1,976 sq. ft.	1,976 sq. ft.
	TERRACE AREA	449 sq. ft.	417 sq. ft.	400 sq. ft.	400 sq. ft.
	TOTAL RESIDENCE	2,425 sq. ft.	2,393 sq. ft.	2,376 sq. ft.	2,376 sq. ft.

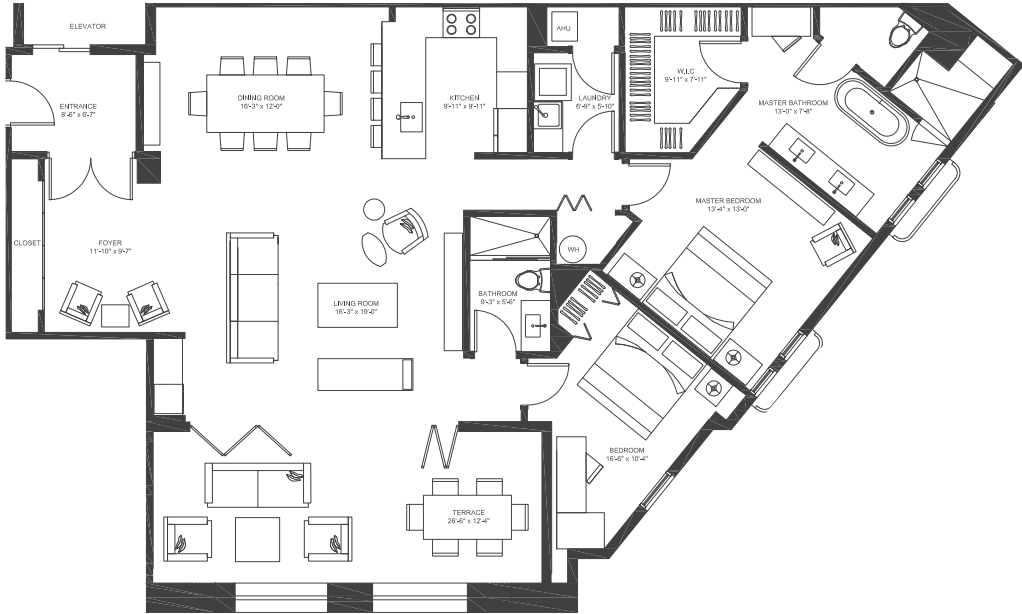


There are various methods for calculating the square footage of a unit and depending on the method of calculation, the quoted square footage of a Unit in an advertising materials may vary from the square footage of a Unit as stated or described in the Prospectus and the Declaration. The dimensions of the Unit shown in this floor plan have been calculated from the exterior boundaries of the exterior walls to the centerline of the interior walls, including common elements such as structural walls and other Interior structural components of the building and in fact vary from the dimensions that result by using the description of the “Unit” and dimensions set forth in the Prospectus and the Declaration. The area of the Unit, determined in accordance with “Unit” as defined in the Prospectus and in the Declaration is less than the square footage reflected here. The configuration, allocation and use of space or the floor plan design may vary from that depicted here or in the Prospectus and/or declaration because the Developer reserves the right in the Prospectus to make architectural, engineerign, design, dimension, specification and floor plan changes at any time, in the Developer's dircetion, without notice to unit buyers. The measurement of any room in this floor plan is generally taken at the greatest points of each given room (as if the room were a perfect rectangle) without regard for any cutouts. Accordingly, the area the area of the actual room will typically be smaller than the product obtained by multiplying the lenght times width stated here. The furnishings, appliances, fixtures and decor illustrated are not included with the purchase of the Unit. See Prospectus for information regarding what is offered with the Unit and the calculation of the Unit square footage and dimensions.

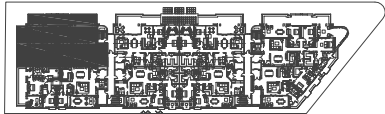


UNIT 8

2 Bedrooms 2 Bathrooms		308	408	508
	A/C INTERIOR AREA	1,649 sq. ft.	1,649 sq. ft.	1,649 sq. ft.
	TERRACE AREA	327 sq. ft.	311 sq. ft.	311 sq. ft.
	TOTAL RESIDENCE	1,976 sq. ft.	1,960 sq. ft.	1,960 sq. ft.



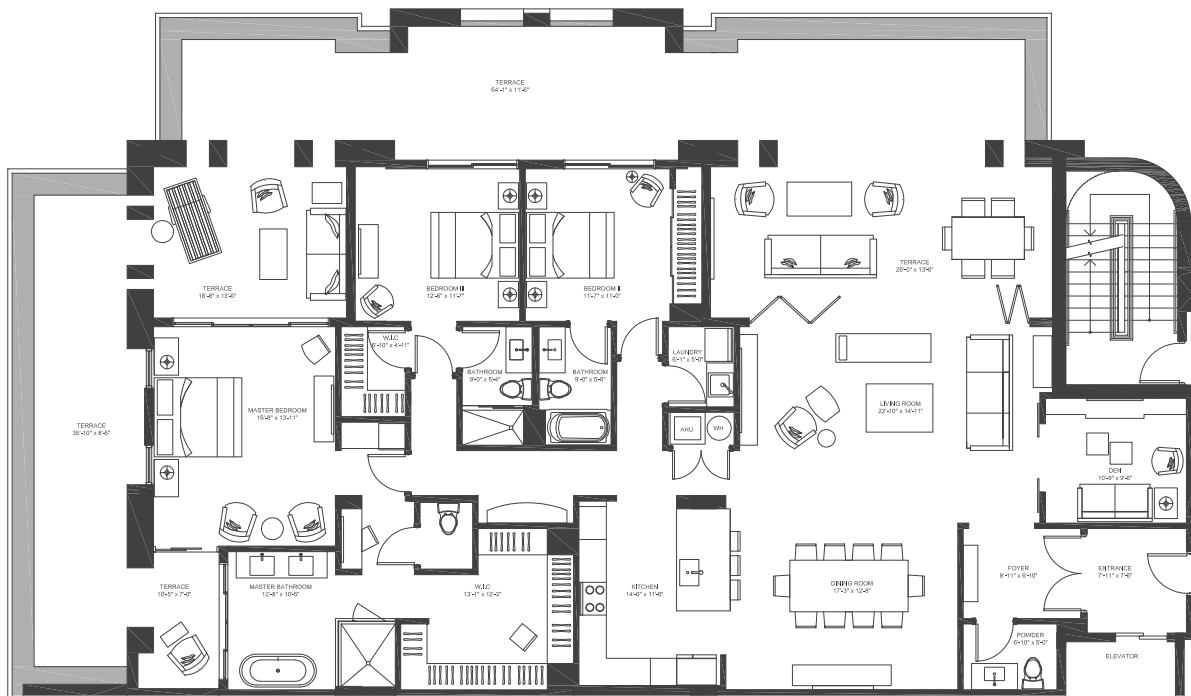
There are various methods for calculating the square footage of a unit and depending on the method of calculation, the quoted square footage of a Unit in an advertising materials may vary from the square footage of a Unit as stated or described in the Prospectus and the Declaration. The dimensions of the Unit shown in this floor plan have been calculated from the exterior boundaries of the exterior walls to the centerline of the interior walls, including common elements such as structural walls and other Interior structural components of the building and in fact vary from the dimensions that result by using the description of the “Unit” and dimensions set forth in the Prospectus and the Declaration. The area of the Unit, determined in accordance with “Unit” as defined in the Prospectus and in the Declaration is less than the square footage reflected here. The configuration, allocation and use of space or the floor plan design may vary from that depicted here or in the Prospectus and/or declaration because the Developer reserves the right in the Prospectus to make architectural, engineerign, design, dimension, specification and floor plan changes at any time, in the Developer's dircetion, without notice to unit buyers. The measurement of any room in this floor plan is generally taken at the greatest points of each given room (as if the room were a perfect rectangle) without regard for any cutouts. Accordingly, the area the area of the actual room will typically be smaller than the product obtained by multiplying the lenght times width stated here. The furnishings, appliances, fixtures and decor illustrated are not included with the purchase of the Unit. See Prospectus for information regarding what is offered with the Unit and the calculation of the Unit square footage and dimensions.



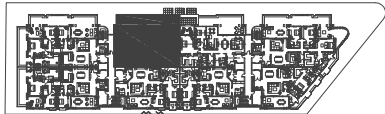
UNIT 1

3 Bedrooms,
3 1/2 Bathrooms
& Den

	201
A/C INTERIOR AREA	2,313 sq. ft.
TERRACE AREA	1,739 sq. ft.
TOTAL RESIDENCE	4,052 sq. ft.



There are various methods for calculating the square footage of a unit and depending on the method of calculation, the quoted square footage of a Unit in an advertising materials may vary from the square footage of a Unit as stated or described in the Prospectus and the Declaration. The dimensions of the Unit shown in this floor plan have been calculated from the exterior boundaries of the exterior walls to the centerline of the interior walls, including common elements such as structural walls and other Interior structural components of the building and in fact vary from the dimensions that result by using the description of the "Unit" and dimensions set forth in the Prospectus and the Declaration. The area of the Unit, determined in accordance with "Unit" as defined in the Prospectus and in the Declaration is less than the square footage reflected here. The configuration, allocation and use of space or the floor plan design may vary from that depicted here or in the Prospectus and/or declaration because the Developer reserves the right in the Prospectus to make architectural, engineerign, design, dimension, specification and floor plan changes at any time, in the Developer's dircetion, without notice to unit buyers. The measurement of any room in this floor plan is generally taken at the greatest points of each given room (as if the room were a perfect rectangle) without regard for any cutouts. Accordingly, the area the area of the actual room will typically be smaller than the product obtained by multiplying the lenght times width stated here. The furnishings, appliances, fixtures and decor illustrated are not included with the purchase of the Unit. See Prospectus for information regarding what is offered with the Unit and the calculation of the Unit square footage and dimensions.



UNIT 2

2 Bedrooms,
2 1/2 Bathrooms
& Den

	202
A/C INTERIOR AREA	2,120 sq. ft.
TERRACE AREA	857 sq. ft.
TOTAL RESIDENCE	2,977 sq. ft.



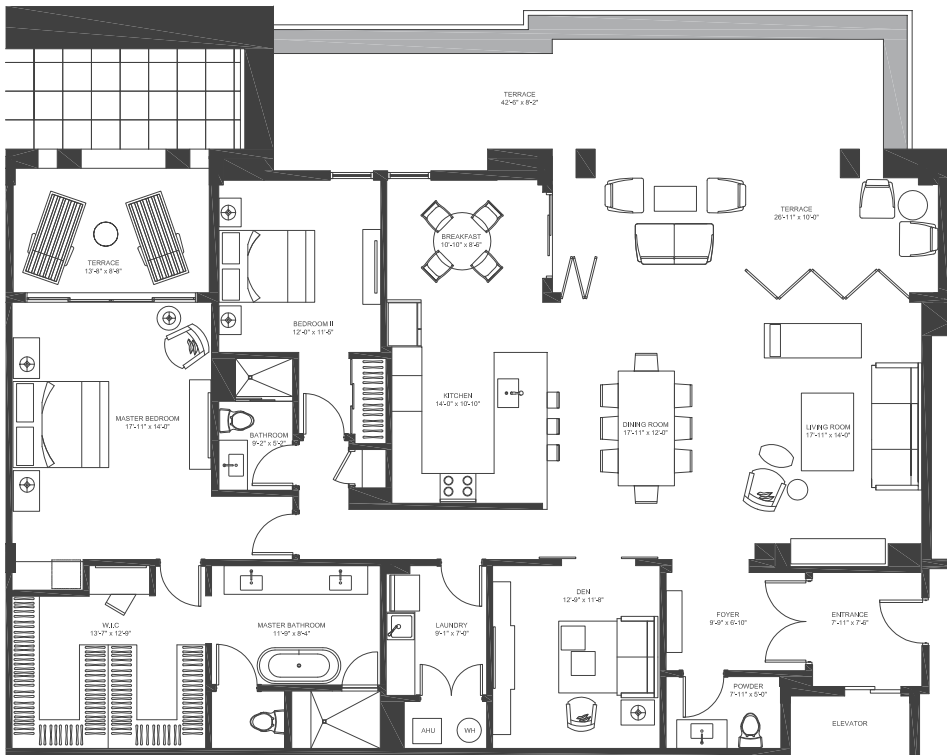
There are various methods for calculating the square footage of a unit and depending on the method of calculation, the quoted square footage of a Unit in an advertising materials may vary from the square footage of a Unit as stated or described in the Prospectus and the Declaration. The dimensions of the Unit shown in this floor plan have been calculated from the exterior boundaries of the exterior walls to the centerline of the interior walls, including common elements such as structural walls and other Interior structural components of the building and in fact vary from the dimensions that result by using the description of the "Unit" and dimensions set forth in the Prospectus and the Declaration. The area of the Unit, determined in accordance with "Unit" as defined in the Prospectus and in the Declaration is less than the square footage reflected here. The configuration, allocation and use of space or the floor plan design may vary from that depicted here or in the Prospectus and/or declaration because the Developer reserves the right in the Prospectus to make architectural, engineerign, design, dimension, specification and floor plan changes at any time, in the Developer's dircetion, without notice to unit buyers. The measurement of any room in this floor plan is generally taken at the greatest points of each given room (as if the room were a perfect rectangle) without regard for any cutouts. Accordingly, the area the area of the actual room will typically be smaller than the product obtained by multiplying the lenght times width stated here. The furnishings, appliances, fixtures and decor illustrated are not included with the purchase of the Unit. See Prospectus for information regarding what is offered with the Unit and the calculation of the Unit square footage and dimensions.



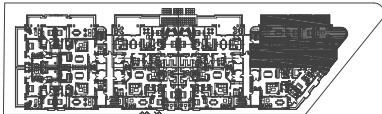
UNIT 3

2 Bedrooms,
2 1/2 Bathrooms
& Den

	203
A/C INTERIOR AREA	2,120 sq. ft.
TERRACE AREA	857 sq. ft.
TOTAL RESIDENCE	2,977 sq. ft.



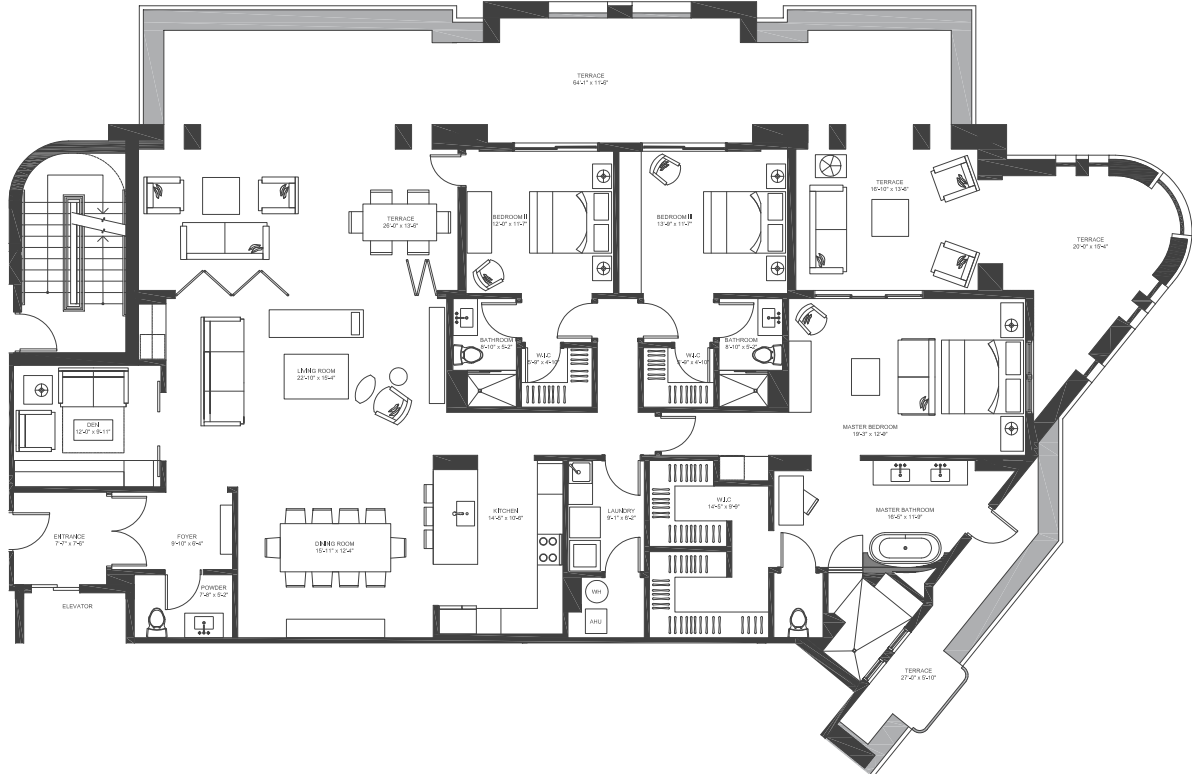
There are various methods for calculating the square footage of a unit and depending on the method of calculation, the quoted square footage of a Unit in an advertising materials may vary from the square footage of a Unit as stated or described in the Prospectus and the Declaration. The dimensions of the Unit shown in this floor plan have been calculated from the exterior boundaries of the exterior walls to the centerline of the interior walls, including common elements such as structural walls and other Interior structural components of the building and in fact vary from the dimensions that result by using the description of the "Unit" and dimensions set forth in the Prospectus and the Declaration. The area of the Unit, determined in accordance with "Unit" as defined in the Prospectus and in the Declaration is less than the square footage reflected here. The configuration, allocation and use of space or the floor plan design may vary from that depicted here or in the Prospectus and/or declaration because the Developer reserves the right in the Prospectus to make architectural, engineerign, design, dimension, specification and floor plan changes at any time, in the Developer's dircetion, without notice to unit buyers. The measurement of any room in this floor plan is generally taken at the greatest points of each given room (as if the room were a perfect rectangle) without regard for any cutouts. Accordingly, the area the area of the actual room will typically be smaller than the product obtained by multiplying the lenght times width stated here. The furnishings, appliances, fixtures and decor illustrated are not included with the purchase of the Unit. See Prospectus for information regarding what is offered with the Unit and the calculation of the Unit square footage and dimensions.



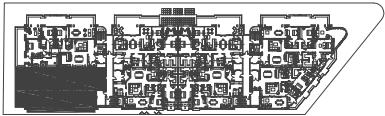
UNIT 4

3 Bedrooms,
3 1/2 Bathrooms
& Den

	204
A/C INTERIOR AREA	2,422 sq. ft.
TERRACE AREA	1,672 sq. ft.
TOTAL RESIDENCE	4,094 sq. ft.



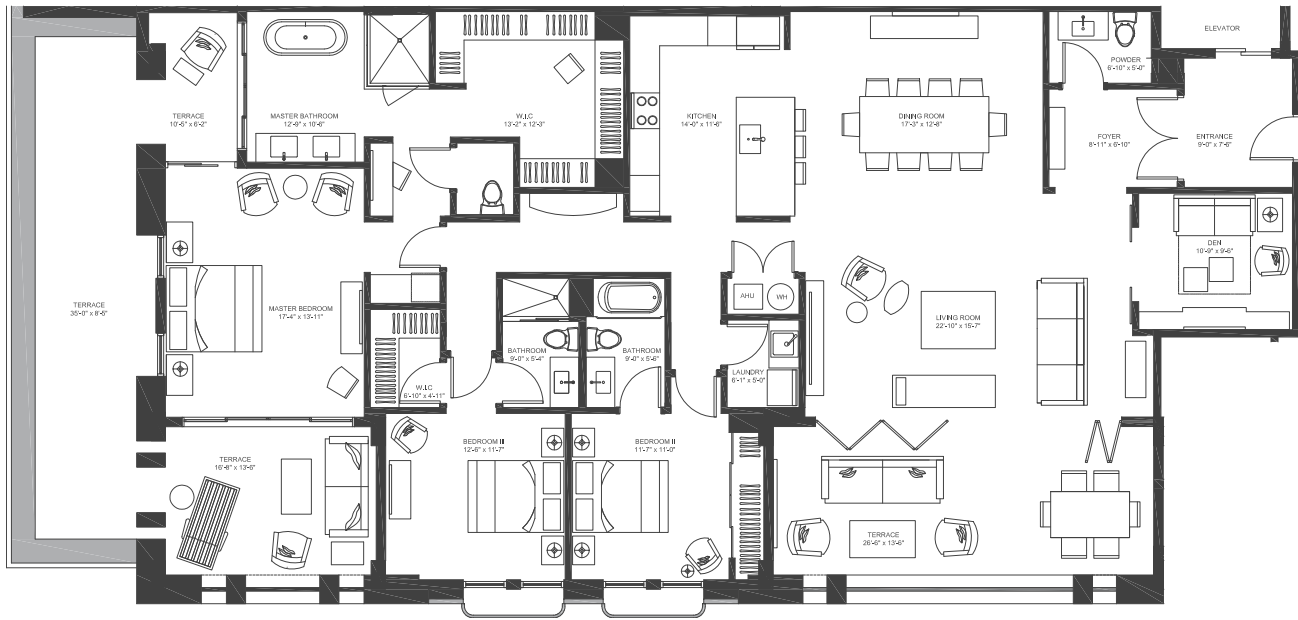
There are various methods for calculating the square footage of a unit and depending on the method of calculation, the quoted square footage of a Unit in an advertising materials may vary from the square footage of a Unit as stated or described in the Prospectus and the Declaration. The dimensions of the Unit shown in this floor plan have been calculated from the exterior boundaries of the exterior walls to the centerline of the interior walls, including common elements such as structural walls and other Interior structural components of the building and in fact vary from the dimensions that result by using the description of the "Unit" and dimensions set forth in the Prospectus and the Declaration. The area of the Unit, determined in accordance with "Unit" as defined in the Prospectus and in the Declaration is less than the square footage reflected here. The configuration, allocation and use of space or the floor plan design may vary from that depicted here or in the Prospectus and/or declaration because the Developer reserves the right in the Prospectus to make architectural, engineerign, design, dimension, specification and floor plan changes at any time, in the Developer's dircetion, without notice to unit buyers. The measurement of any room in this floor plan is generally taken at the greatest points of each given room (as if the room were a perfect rectangle) without regard for any cutouts. Accordingly, the area the area of the actual room will typically be smaller than the product obtained by multiplying the lenght times width stated here. The furnishings, appliances, fixtures and decor illustrated are not included with the purchase of the Unit. See Prospectus for information regarding what is offered with the Unit and the calculation of the Unit square footage and dimensions.



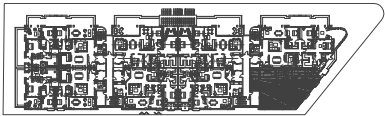
UNIT 5

3 Bedrooms,
3 1/2 Bathrooms
& Den

	205
A/C INTERIOR AREA	2,358 sq. ft.
TERRACE AREA	1,025 sq. ft.
TOTAL RESIDENCE	3,383 sq. ft.



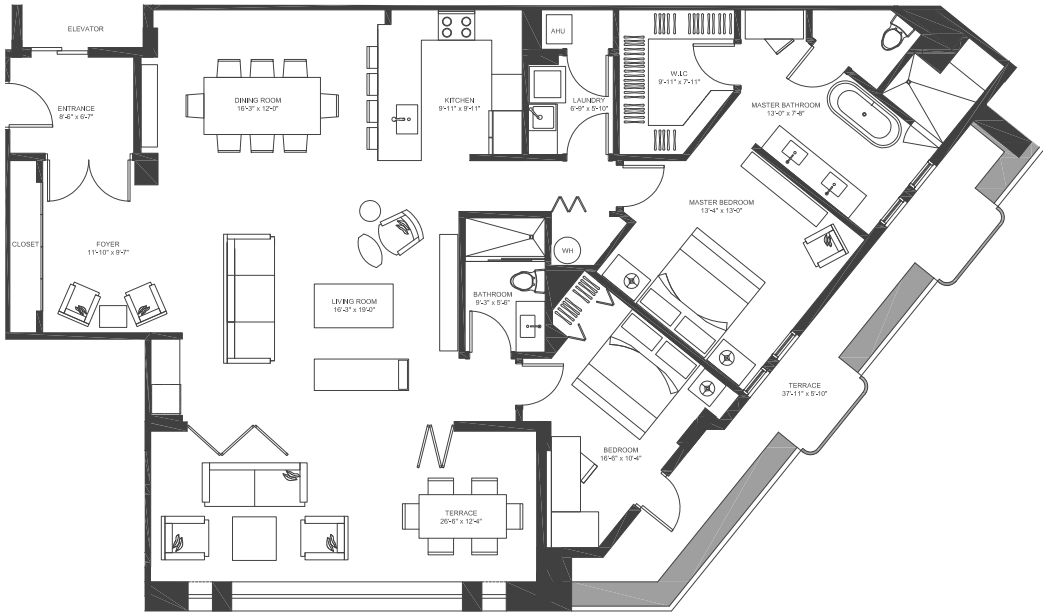
There are various methods for calculating the square footage of a unit and depending on the method of calculation, the quoted square footage of a Unit in an advertising materials may vary from the square footage of a Unit as stated or described in the Prospectus and the Declaration. The dimensions of the Unit shown in this floor plan have been calculated from the exterior boundaries of the exterior walls to the centerline of the interior walls, including common elements such as structural walls and other Interior structural components of the building and in fact vary from the dimensions that result by using the description of the "Unit" and dimensions set forth in the Prospectus and the Declaration. The area of the Unit, determined in accordance with "Unit" as defined in the Prospectus and in the Declaration is less than the square footage reflected here. The configuration, allocation and use of space or the floor plan design may vary from that depicted here or in the Prospectus and/or declaration because the Developer reserves the right in the Prospectus to make architectural, engineerign, design, dimension, specification and floor plan changes at any time, in the Developer's dircetion, without notice to unit buyers. The measurement of any room in this floor plan is generally taken at the greatest points of each given room (as if the room were a perfect rectangle) without regard for any cutouts. Accordingly, the area the area of the actual room will typically be smaller than the product obtained by multiplying the lenght times width stated here. The furnishings, appliances, fixtures and decor illustrated are not included with the purchase of the Unit. See Prospectus for information regarding what is offered with the Unit and the calculation of the Unit square footage and dimensions.



UNIT 8

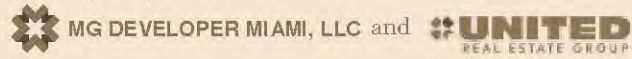
2 Bedrooms,
2 Bathrooms

	208
A/C INTERIOR AREA	1,649 sq. ft.
TERRACE AREA	571 sq. ft.
TOTAL RESIDENCE	2,220 sq. ft.



There are various methods for calculating the square footage of a unit and depending on the method of calculation, the quoted square footage of a Unit in an advertising materials may vary from the square footage of a Unit as stated or described in the Prospectus and the Declaration. The dimensions of the Unit shown in this floor plan have been calculated from the exterior boundaries of the exterior walls to the centerline of the interior walls, including common elements such as structural walls and other Interior structural components of the building and in fact vary from the dimensions that result by using the description of the "Unit" and dimensions set forth in the Prospectus and the Declaration. The area of the Unit, determined in accordance with "Unit" as defined in the Prospectus and in the Declaration is less than the square footage reflected here. The configuration, allocation and use of space or the floor plan design may vary from that depicted here or in the Prospectus and/or declaration because the Developer reserves the right in the Prospectus to make architectural, engineerign, design, dimension, specification and floor plan changes at any time, in the Developer's dircetion, without notice to unit buyers. The measurement of any room in this floor plan is generally taken at the greatest points of each given room (as if the room were a perfect rectangle) without regard for any cutouts. Accordingly, the area the area of the actual room will typically be smaller than the product obtained by multiplying the lenght times width stated here. The furnishings, appliances, fixtures and decor illustrated are not included with the purchase of the Unit. See Prospectus for information regarding what is offered with the Unit and the calculation of the Unit square footage and dimensions.

Developed by



Designed by

avanzato design

Architecture by

Bellin & Pratt
architects, LLC

Built by



OBTAIN THE PROPERTY REPORT REQUIRED BY THE FEDERAL LAW AND READ IT BEFORE SIGNING ANYTHING. NO FEDERAL AGENCY HAS JUDGED THE MERITS OR VALUE, IF ANY, OF THIS PROPERTY.

ORAL REPRESENTATIONS CANNOT BE RELIED UPON AS CORRECTLY STATING THE REPRESENTATIONS OF THE DEVELOPER. FOR CORRECT REPRESENTATIONS, MAKE REFERENCE TO THIS BROCHURE AND TO THE DOCUMENTS REQUIRED BY SECTION 718.503, FLORIDA STATUTES, TO BE FURNISHED BY A DEVELOPER TO A BUYER OR LESSEE.

This is not intended to be an offer to sell, or solicitation of an offer to buy, condominium units to residents of CT, ID, NY, NJ and OR, unless registered or exemptions are available, or in any other jurisdiction where prohibited by law, and your eligibility for purchase will depend upon your state of residency. This offering is made only by the prospectus for the condominium and no statement should be relied upon if not made in the prospectus. The sketches, renderings, graphic materials, plans, specifications, terms, conditions and statements contained in this brochure are proposed only with all improvements, designs and construction specifications subject to first obtaining the appropriate federal, state and local permits and approvals for same. Therefore such improvements, designs and construction specifications may change as a requirement of law. And, the Developer (as is defined herein below) reserves the right to revise or modify, in its sole and absolute discretion, any or all improvements, designs and construction specifications depicted and all terms, conditions and statements made. These drawings, rendering, and photographs are conceptual only and are for the convenience of illustrating a proposed development; these drawings, renderings and photographs should not be relied upon as representations, express or implied, of the final detail of the residences. All depictions of appliances, fixtures, counters, soffits, wall coverings, floor coverings, furnishings, closets, and other matters of detail, including, without limitation, items of finish and decoration, are conceptual only and are not necessarily the final finishes and details included with the purchase of a Unit. Consult your Purchase Agreement and the Prospectus for information on what is included with Unit purchases. The photographs contained in this brochure may be stock photography, or may have been taken off-site and are used to depict the spirit of the lifestyles to be achieved rather than any that may exist or that may be proposed, and the photographs are merely intended as illustrations of the activities and concepts depicted therein. No statements or representations have been made by Seller, or any of its agents, employees or representatives with respect to any potential for future profit, any future appreciation in value, investment opportunity potential, any rental income potential, the ability or willingness of Developer, or its affiliates, to assist any buyer in financing, renting (other than the existence of a voluntary rental program) or selling the Unit (except only in response to a direct inquiry from buyer), the economic or tax benefits to be derived from the managerial efforts of a third party as a result of renting the Unit or other units, or the economic or tax benefits to be derived from ownership of the Unit. The Developer, its agents, employees, and representatives are neither investment advisors nor tax advisors and any statement that may have been made should not be relied upon in your decision to purchase. Certain nearby attractions referenced or identified in this publication are off-site and not controlled by the Developer. The references to nearby attractions are based upon public information sources and are believed to be accurate as of the date of this publication; however, there is no guarantee that such attractions will continue to exist, or that there would not be changes and/or substitutions of any of the same. The managing entities, operators, amenities and other features that may be referred to are accurate as of the date of this publication; however, there is no guarantee that the managing entities, operators, amenities and other features that may be referred to will be involved at, or following, the completion of the Condominium. The Developer reserves the right to change any and all such managing entities, operators, amenities and other features that may be referred to as the Developer deems best for the Condominium in the Developer's sole and absolute discretion. Dimensions and square footage of the Units are approximate and may vary with actual construction. This Condominium is being developed by Valencia Partners, LP, a Florida limited partnership ("Developer"), which has a limited right to use the trademarked names and logos used herein pursuant to a license and marketing agreement. You will look solely to Developer with respect to any and all matters relating to the sales, marketing, and development of the Condominium or your purchase of a Unit in the Condominium. No real estate broker is authorized to make any representations or other statements regarding the project, and no agreements with, deposits paid to or other arrangements made with any real estate broker are or shall be binding on the Developer. All prices are subject to change at any time and without notice, and do not include optional features or premiums for upgraded units. From time to time, price changes may have occurred that are not yet reflected on this brochure. Please check with the sales center for the most current pricing. Concierge services that may be described are available to Unit owners who pay additional fees. Consult the Prospectus for the site plan and the location of the Unit you desire. Unless otherwise noted, the content is owned by Developer and the unauthorized reproduction, display or other dissemination of such materials is strictly prohibited and constitutes copyright infringement.