

01NW

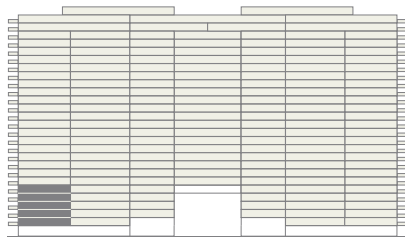
2nd-6th Floor

2 BEDROOMS - 2 BATHROOMS

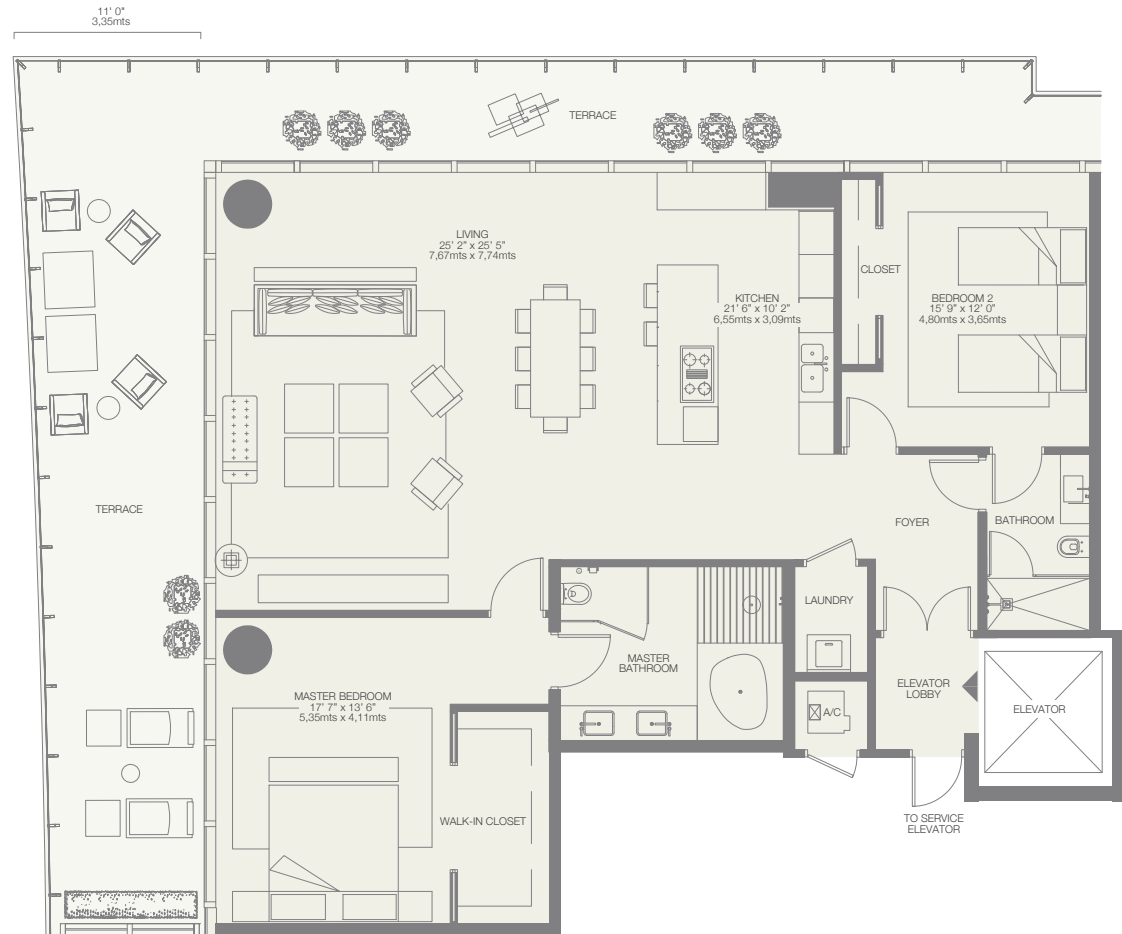
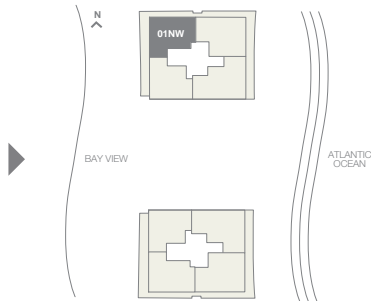
RESIDENCE 1,917 *sq.ft.* 178 *sq.mt.*

TERRACE 795 *sq.ft.* 74 *sq.mt.*

Total 2,712 *sq.ft.* 252 *sq.mt.*



WEST VIEW



Stated dimensions are measured to the exterior boundaries of the exterior walls and the centerline of interior demising walls and in fact vary from the dimensions that would be determined by using the description and definition of the "Unit" set forth in the Declaration (which generally only includes the interior airspace between the perimeter walls and excludes interior structural components). For the square footage of the "Unit" calculated in the manner set forth in the Declaration, see Exhibit "3" to the Declaration. Additionally, measurements of rooms set forth on any floor plan are generally taken at the greatest points of each given room (as if the room were a perfect rectangle), without regard for any cutouts. Accordingly, the area of the actual room will typically be smaller than the product obtained by multiplying the stated length times width. All dimensions are approximate, and all floor plans and development plans are subject to change.

01SW

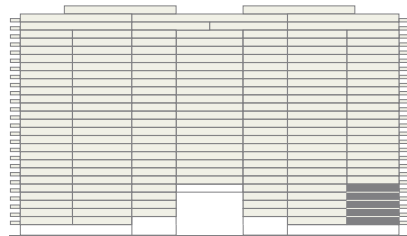
2nd-6th Floor

2 BEDROOMS - 2 BATHROOMS

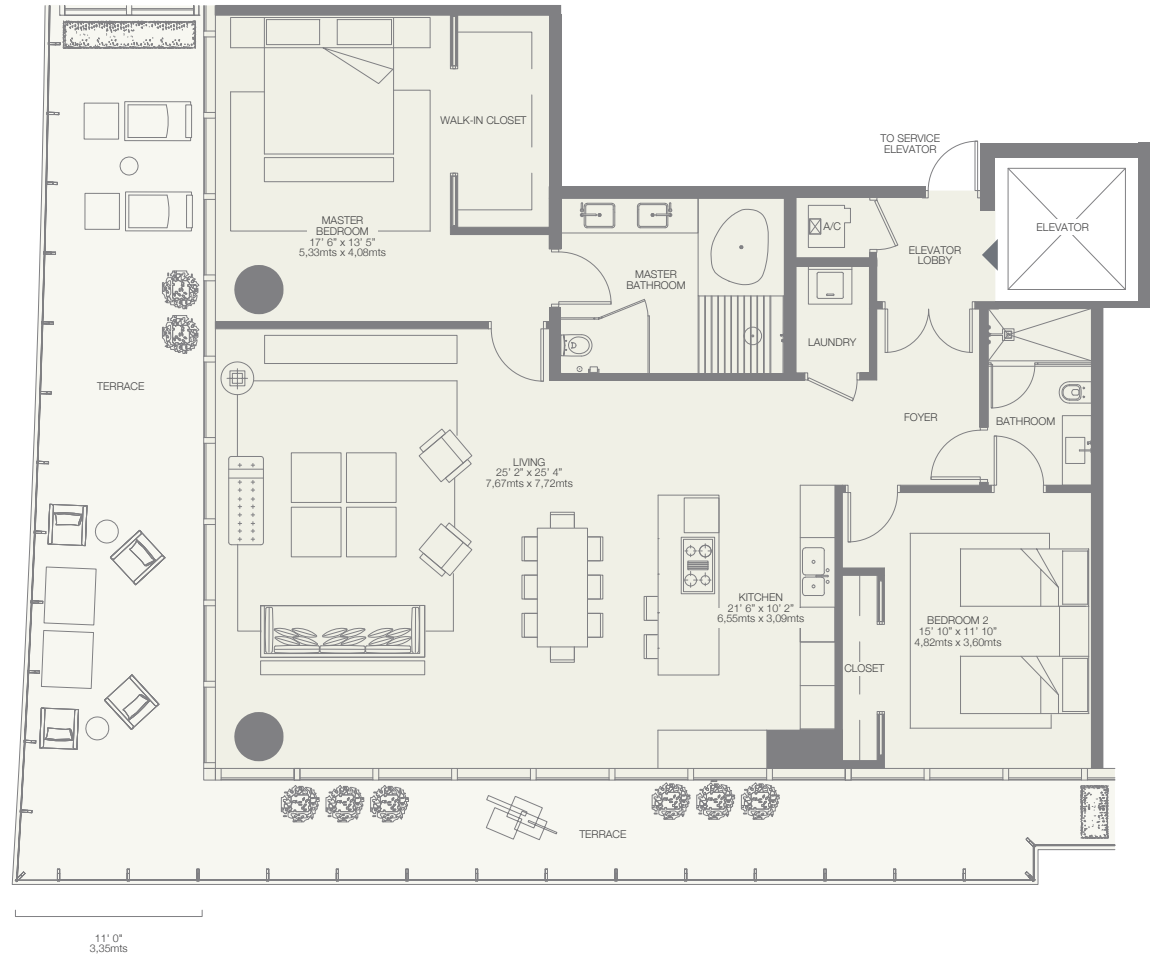
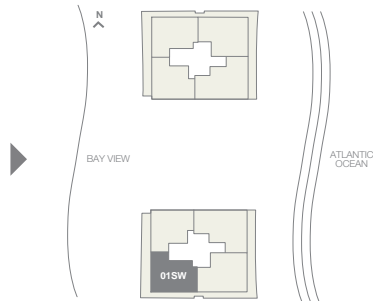
RESIDENCE 1,917 *sq.ft.* 178 *sq. mt.*

TERRACE 795 *sq.ft.* 74 *sq. mt.*

Total 2,712 *sq.ft.* 252 *sq. mt.*



WEST VIEW



Stated dimensions are measured to the exterior boundaries of the exterior walls and the centerline of interior demising walls and in fact vary from the dimensions that would be determined by using the description and definition of the "Unit" set forth in the Declaration (which generally only includes the interior airspace between the perimeter walls and excludes interior structural components). For the square footage of the "Unit" calculated in the manner set forth in the Declaration, see Exhibit "3" to the Declaration. Additionally, measurements of rooms set forth on any floor plan are generally taken at the greatest points of each given room (as if the room were a perfect rectangle), without regard for any cutouts. Accordingly, the area of the actual room will typically be smaller than the product obtained by multiplying the stated length times width. All dimensions are approximate, and all floor plans and development plans are subject to change.

01NE

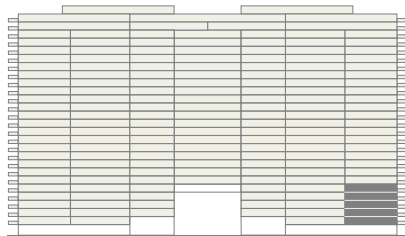
2nd-6th Floor

2 BEDROOMS - 2 ½ BATHROOMS

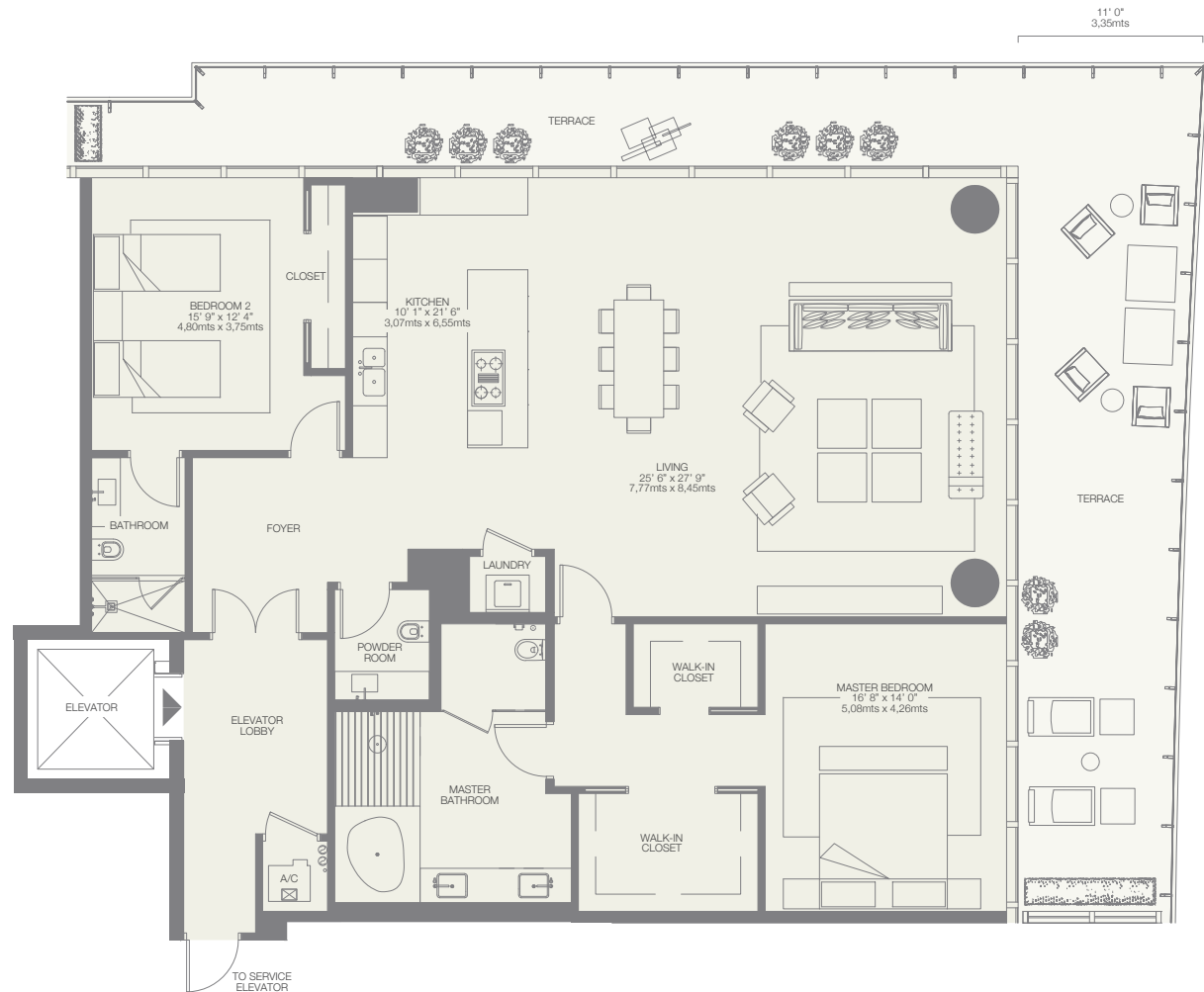
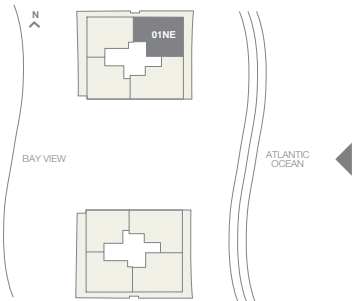
RESIDENCE 2,268 *sq.ft.* 210 *sq. mt.*

TERRACE 800 *sq.ft.* 74 *sq. mt.*

Total 3,068 *sq.ft.* 284 *sq. mt.*



EAST VIEW



Stated dimensions are measured to the exterior boundaries of the exterior walls and the centerline of interior demising walls and in fact vary from the dimensions that would be determined by using the description and definition of the "Unit" set forth in the Declaration (which generally only includes the interior airspace between the perimeter walls and excludes interior structural components). For the square footage of the "Unit" calculated in the manner set forth in the Declaration, see Exhibit "3" to the Declaration. Additionally, measurements of rooms set forth on any floor plan are generally taken at the greatest points of each given room (as if the room were a perfect rectangle), without regard for any cutouts. Accordingly, the area of the actual room will typically be smaller than the product obtained by multiplying the stated length times width. All dimensions are approximate, and all floor plans and development plans are subject to change.

01SE

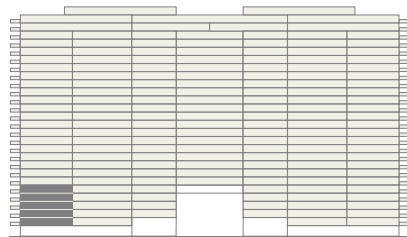
2nd-6th Floor

2 BEDROOMS - 2 ½ BATHROOMS

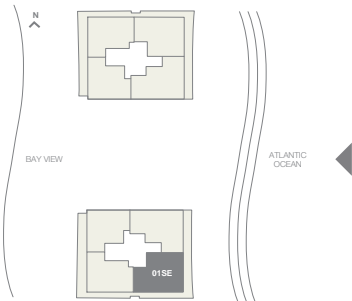
RESIDENCE 2,268 *sq.ft.* 210 *sq. mt.*

TERRACE 800 *sq.ft.* 74 *sq. mt.*

Total 3,068 *sq.ft.* 284 *sq. mt.*



EAST VIEW



Stated dimensions are measured to the exterior boundaries of the exterior walls and the centerline of interior demising walls and in fact vary from the dimensions that would be determined by using the description and definition of the "Unit" set forth in the Declaration (which generally only includes the interior airspace between the perimeter walls and excludes interior structural components). For the square footage of the "Unit" calculated in the manner set forth in the Declaration, see Exhibit "3" to the Declaration. Additionally, measurements of rooms set forth on any floor plan are generally taken at the greatest points of each given room (as if the room were a perfect rectangle), without regard for any cutouts. Accordingly, the area of the actual room will typically be smaller than the product obtained by multiplying the stated length times width. All dimensions are approximate, and all floor plans and development plans are subject to change.

O2NE

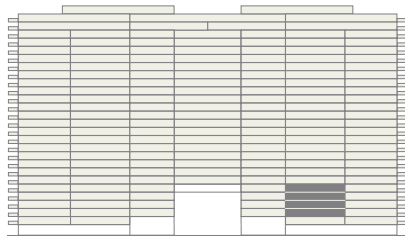
3rd-6th Floor

2 BEDROOMS - 3 BATHROOMS - DEN

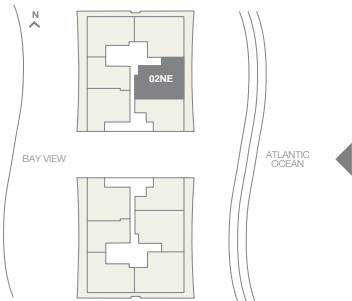
RESIDENCE 2,130 *sq.ft.* 198 *sq.mt.*

TERRACE 425 *sq.ft.* 40 *sq.mt.*

Total 2,555 *sq.ft.* 238 *sq.mt.*



EAST VIEW



Stated dimensions are measured to the exterior boundaries of the exterior walls and the centerline of interior demising walls and in fact vary from the dimensions that would be determined by using the description and definition of the "Unit" set forth in the Declaration (which generally only includes the interior airspace between the perimeter walls and excludes interior structural components). For the square footage of the "Unit" calculated in the manner set forth in the Declaration, see Exhibit "3" to the Declaration. Additionally, measurements of rooms set forth on any floor plan are generally taken at the greatest points of each given room (as if the room were a perfect rectangle), without regard for any cutouts. Accordingly, the area of the actual room will typically be smaller than the product obtained by multiplying the stated length times width. All dimensions are approximate, and all floor plans and development plans are subject to change.

O2SE

3rd-6th Floor

2 BEDROOMS - 3 BATHROOMS - DEN

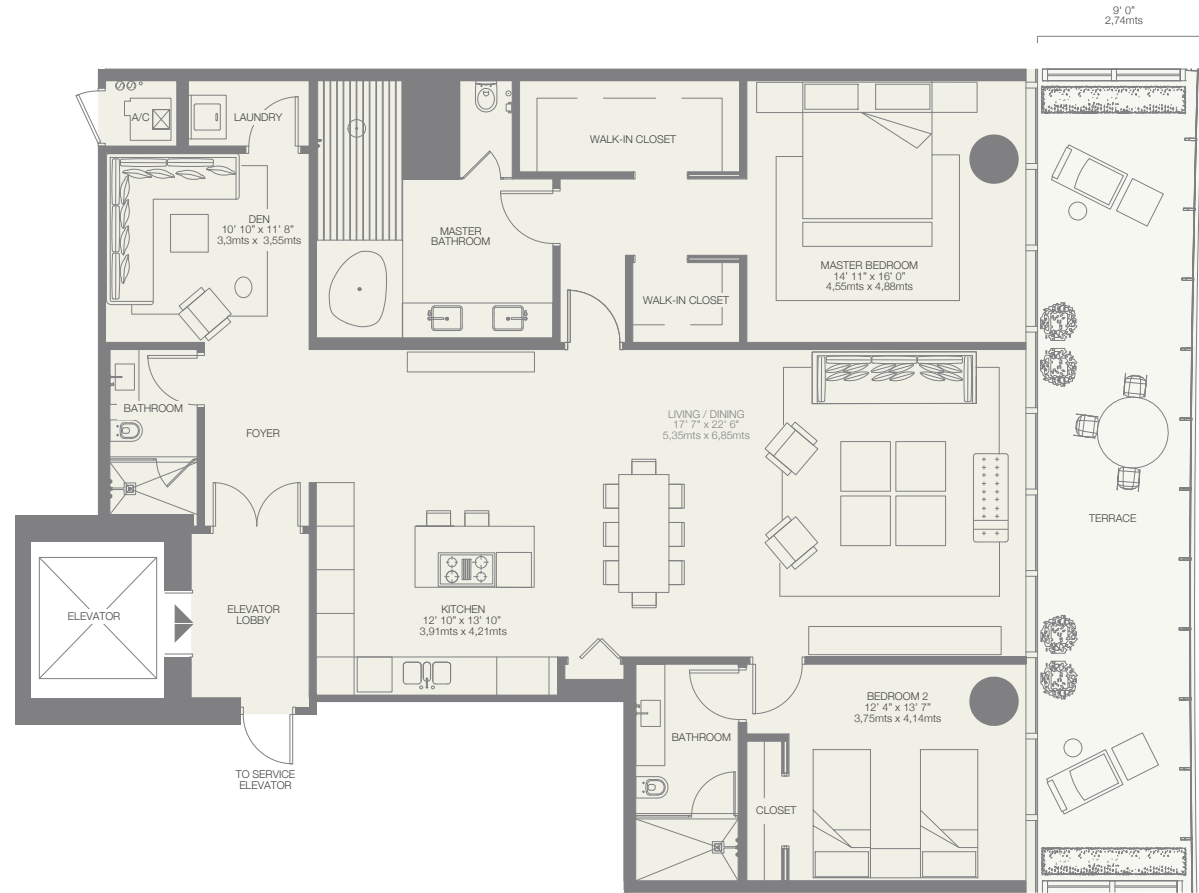
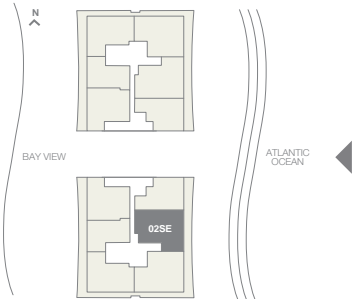
RESIDENCE 2,130 *sq.ft.* 198 *sq.mt.*

TERRACE 425 *sq.ft.* 40 *sq.mt.*

Total 2,555 *sq.ft.* 238 *sq.mt.*



EAST VIEW



Stated dimensions are measured to the exterior boundaries of the exterior walls and the centerline of interior demising walls and in fact vary from the dimensions that would be determined by using the description and definition of the "Unit" set forth in the Declaration (which generally only includes the interior airspace between the perimeter walls and excludes interior structural components). For the square footage of the "Unit" calculated in the manner set forth in the Declaration, see Exhibit "3" to the Declaration. Additionally, measurements of rooms set forth on any floor plan are generally taken at the greatest points of each given room (as if the room were a perfect rectangle), without regard for any cutouts. Accordingly, the area of the actual room will typically be smaller than the product obtained by multiplying the stated length times width. All dimensions are approximate, and all floor plans and development plans are subject to change.

O3NE

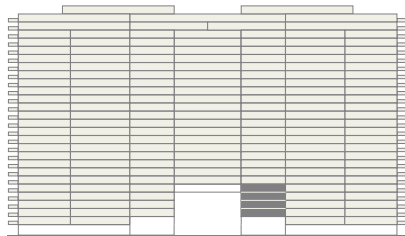
3rd-6th Floor

1 BEDROOMS - 2 BATHROOMS - DEN

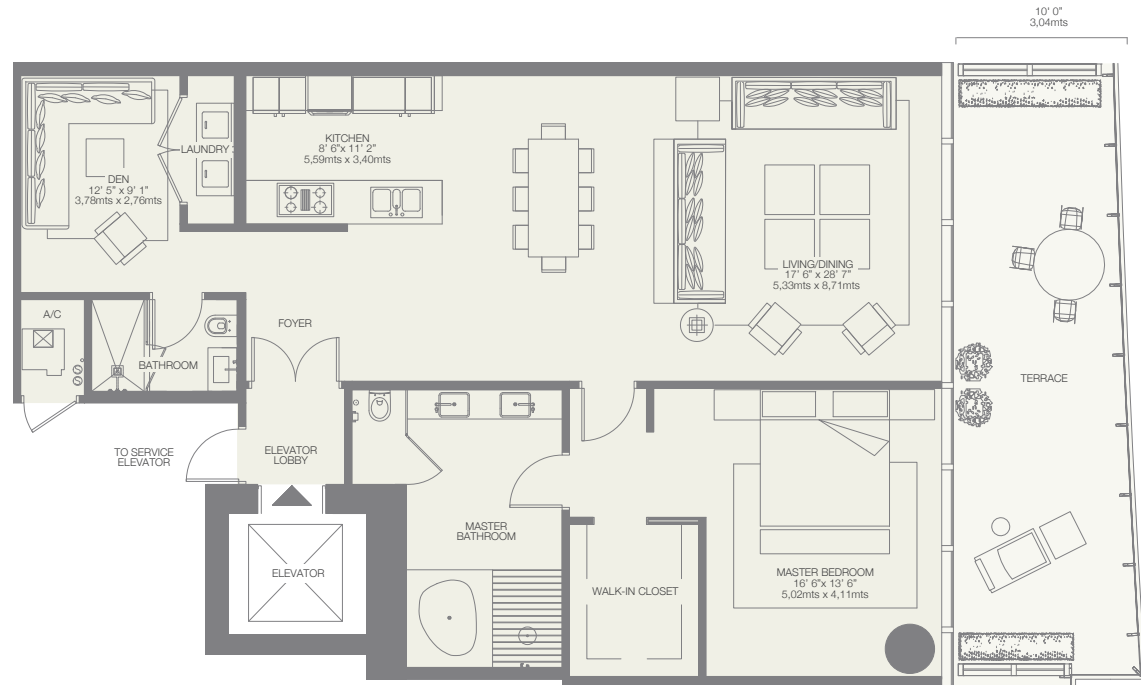
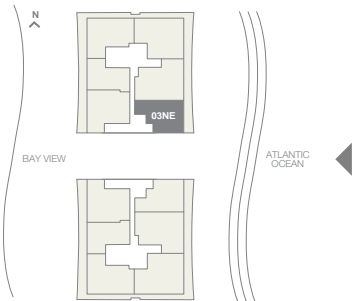
RESIDENCE 1,603 *sq.ft.* 149 *sq. mt.*

TERRACE 355 *sq.ft.* 33 *sq. mt.*

Total 1,958 *sq.ft.* 182 *sq. mt.*



EAST VIEW



Stated dimensions are measured to the exterior boundaries of the exterior walls and the centerline of interior demising walls and in fact vary from the dimensions that would be determined by using the description and definition of the "Unit" set forth in the Declaration (which generally only includes the interior airspace between the perimeter walls and excludes interior structural components). For the square footage of the "Unit" calculated in the manner set forth in the Declaration, see Exhibit "3" to the Declaration. Additionally, measurements of rooms set forth on any floor plan are generally taken at the greatest points of each given room (as if the room were a perfect rectangle), without regard for any cutouts. Accordingly, the area of the actual room will typically be smaller than the product obtained by multiplying the stated length times width. All dimensions are approximate, and all floor plans and development plans are subject to change.

O3SE

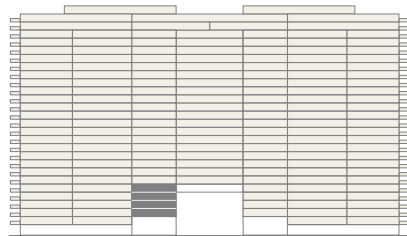
3rd-6th Floor

1 BEDROOMS - 2 BATHROOMS - DEN

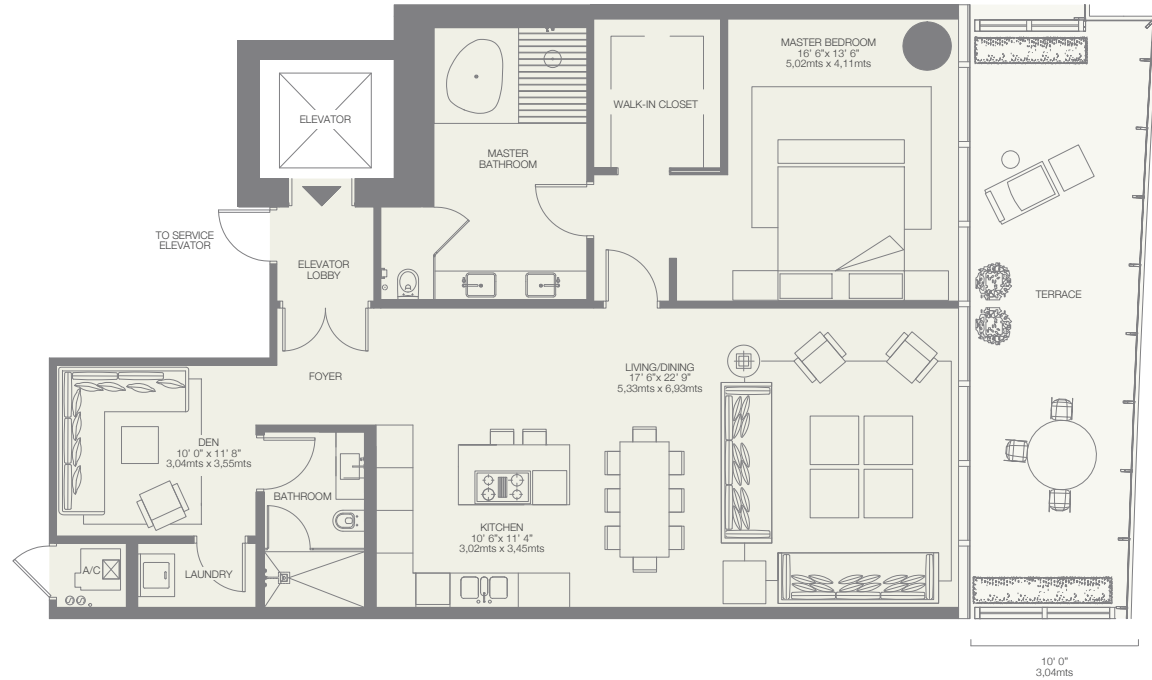
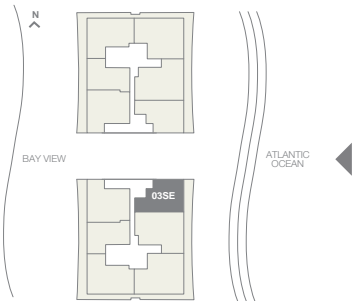
RESIDENCE 1,549 *sq.ft.* 144 *sq.mt.*

TERRACE 355 *sq.ft.* 33 *sq.mt.*

Total 1,904 *sq.ft.* 177 *sq.mt.*



EAST VIEW



Stated dimensions are measured to the exterior boundaries of the exterior walls and the centerline of interior demising walls and in fact vary from the dimensions that would be determined by using the description and definition of the "Unit" set forth in the Declaration (which generally only includes the interior airspace between the perimeter walls and excludes interior structural components). For the square footage of the "Unit" calculated in the manner set forth in the Declaration, see Exhibit "3" to the Declaration. Additionally, measurements of rooms set forth on any floor plan are generally taken at the greatest points of each given room (as if the room were a perfect rectangle), without regard for any cutouts. Accordingly, the area of the actual room will typically be smaller than the product obtained by multiplying the stated length times width. All dimensions are approximate, and all floor plans and development plans are subject to change.

04NW

3rd-12th Floor

1 BEDROOM - 1 ½ BATHROOMS

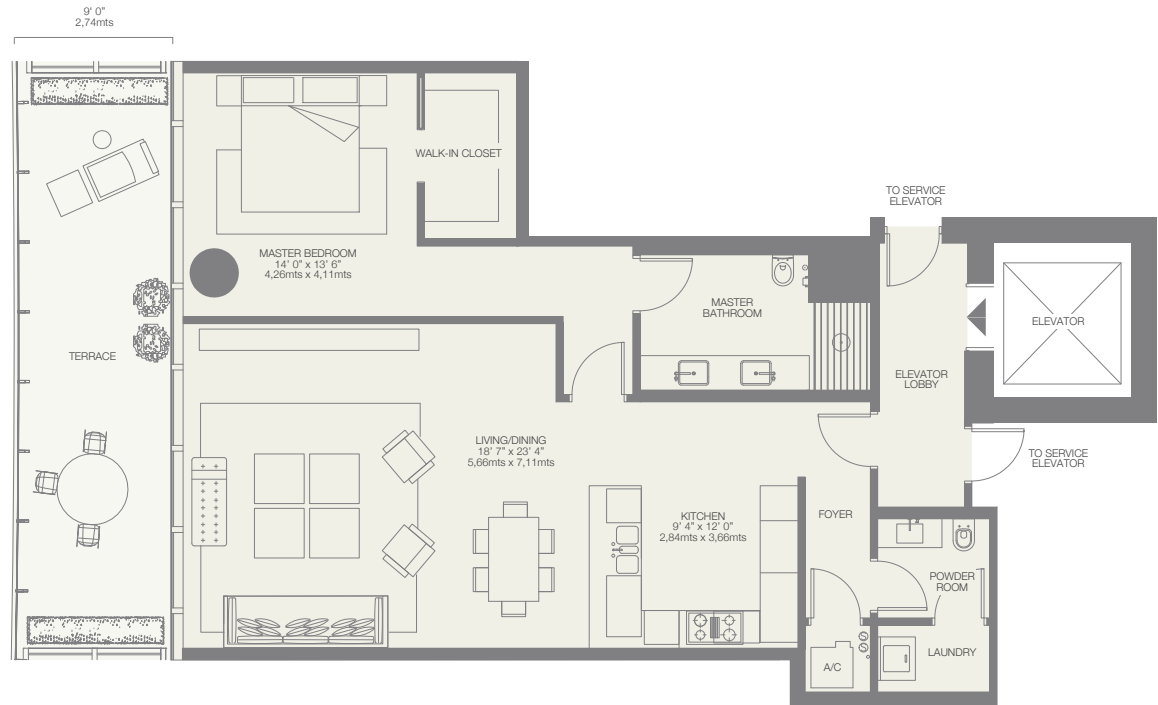
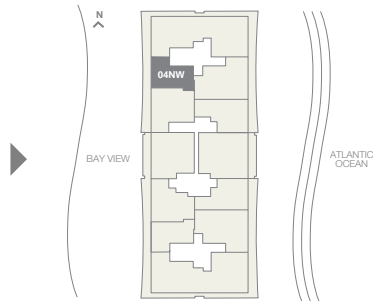
RESIDENCE 1,323 *sq.ft.* 123 *sq. mt.*

TERRACE 305 *sq.ft.* 28 *sq. mt.*

Total 1,628 *sq.ft.* 151 *sq. mt.*



WEST VIEW



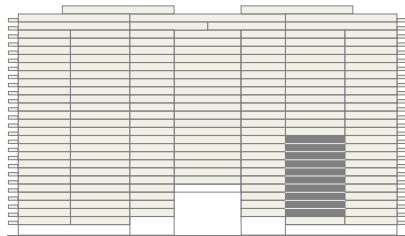
Stated dimensions are measured to the exterior boundaries of the exterior walls and the centerline of interior demising walls and in fact vary from the dimensions that would be determined by using the description and definition of the "Unit" set forth in the Declaration (which generally only includes the interior airspace between the perimeter walls and excludes interior structural components). For the square footage of the "Unit" calculated in the manner set forth in the Declaration, see Exhibit "3" to the Declaration. Additionally, measurements of rooms set forth on any floor plan are generally taken at the greatest points of each given room (as if the room were a perfect rectangle), without regard for any cutouts. Accordingly, the area of the actual room will typically be smaller than the product obtained by multiplying the stated length times width. All dimensions are approximate, and all floor plans and development plans are subject to change.

04SW

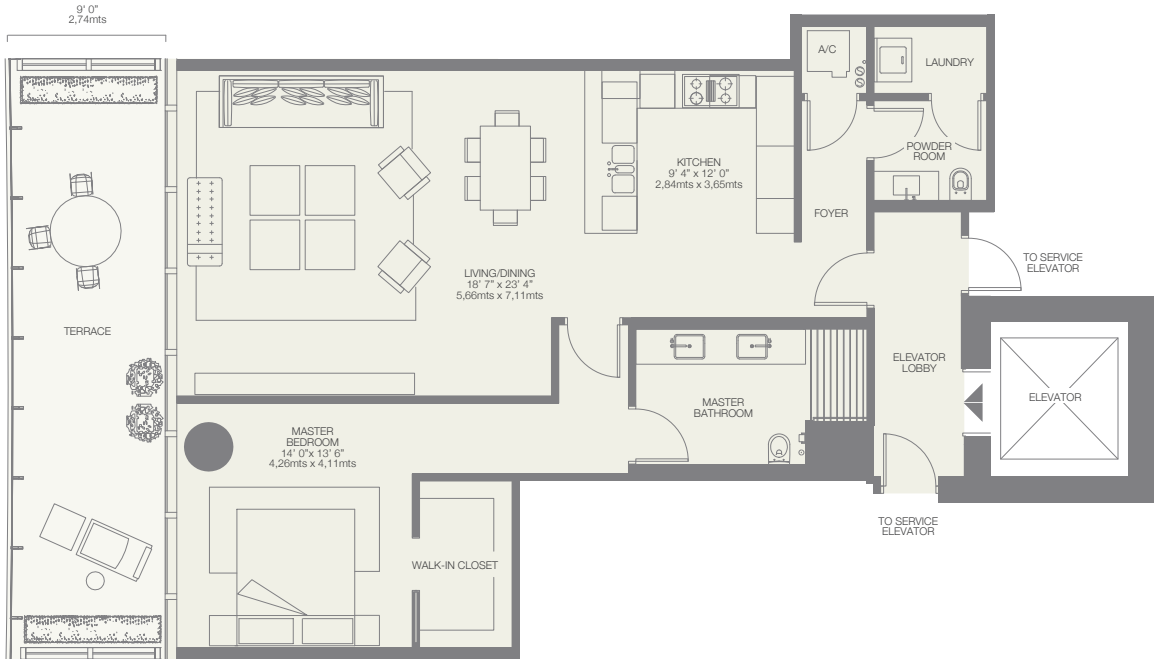
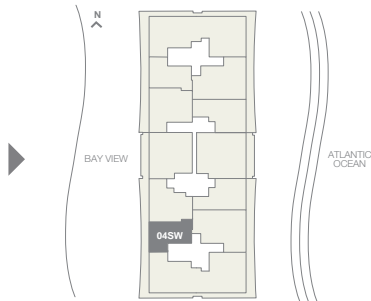
3rd-12th Floor

1 BEDROOM - 1 ½ BATHROOMS

RESIDENCE	1,323 <i>sq.ft.</i> 123 <i>sq. mt.</i>
TERRACE	305 <i>sq.ft.</i> 28 <i>sq. mt.</i>
Total	1,628 <i>sq.ft.</i> 151 <i>sq. mt.</i>



WEST VIEW



Stated dimensions are measured to the exterior boundaries of the exterior walls and the centerline of interior demising walls and in fact vary from the dimensions that would be determined by using the description and definition of the "Unit" set forth in the Declaration (which generally only includes the interior airspace between the perimeter walls and excludes interior structural components). For the square footage of the "Unit" calculated in the manner set forth in the Declaration, see Exhibit "3" to the Declaration. Additionally, measurements of rooms set forth on any floor plan are generally taken at the greatest points of each given room (as if the room were a perfect rectangle), without regard for any cutouts. Accordingly, the area of the actual room will typically be smaller than the product obtained by multiplying the stated length times width. All dimensions are approximate, and all floor plans and development plans are subject to change.

05NW

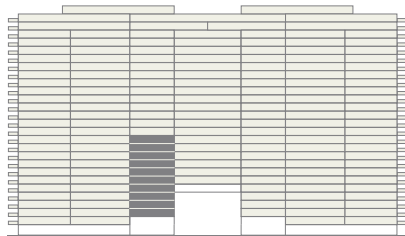
3rd-12th Floor

2 BEDROOMS - 2 ½ BATHROOMS

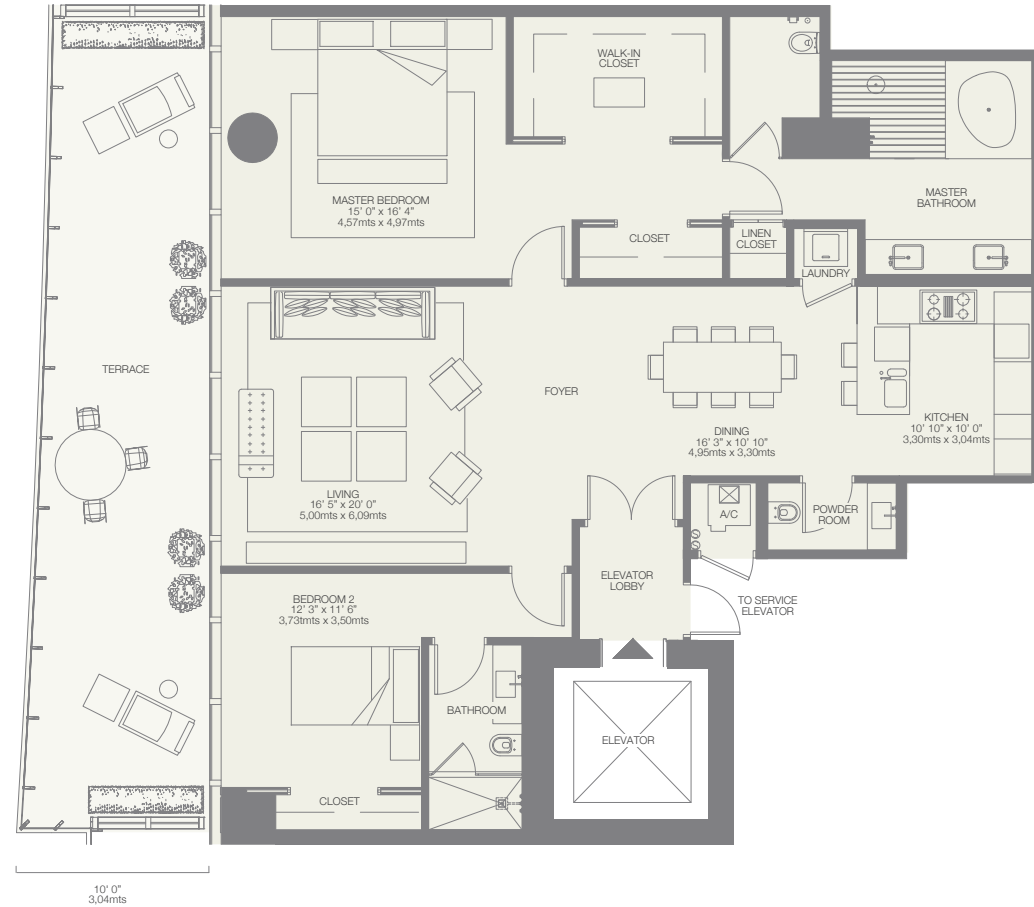
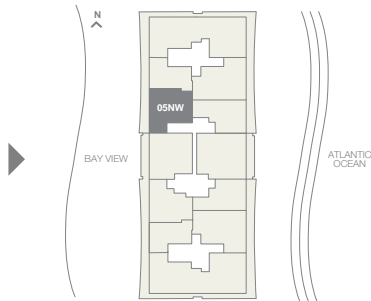
RESIDENCE 1,778 *sq.ft.* 165 *sq.mt.*

TERRACE 465 *sq.ft.* 43 *sq.mt.*

Total 2,243 *sq.ft.* 208 *sq.mt.*



WEST VIEW



Stated dimensions are measured to the exterior boundaries of the exterior walls and the centerline of interior demising walls and in fact vary from the dimensions that would be determined by using the description and definition of the "Unit" set forth in the Declaration (which generally only includes the interior airspace between the perimeter walls and excludes interior structural components). For the square footage of the "Unit" calculated in the manner set forth in the Declaration, see Exhibit "3" to the Declaration. Additionally, measurements of rooms set forth on any floor plan are generally taken at the greatest points of each given room (as if the room were a perfect rectangle), without regard for any cutouts. Accordingly, the area of the actual room will typically be smaller than the product obtained by multiplying the stated length times width. All dimensions are approximate, and all floor plans and development plans are subject to change.

05SW

3rd-12th Floor

2 BEDROOMS - 2 ½ BATHROOMS

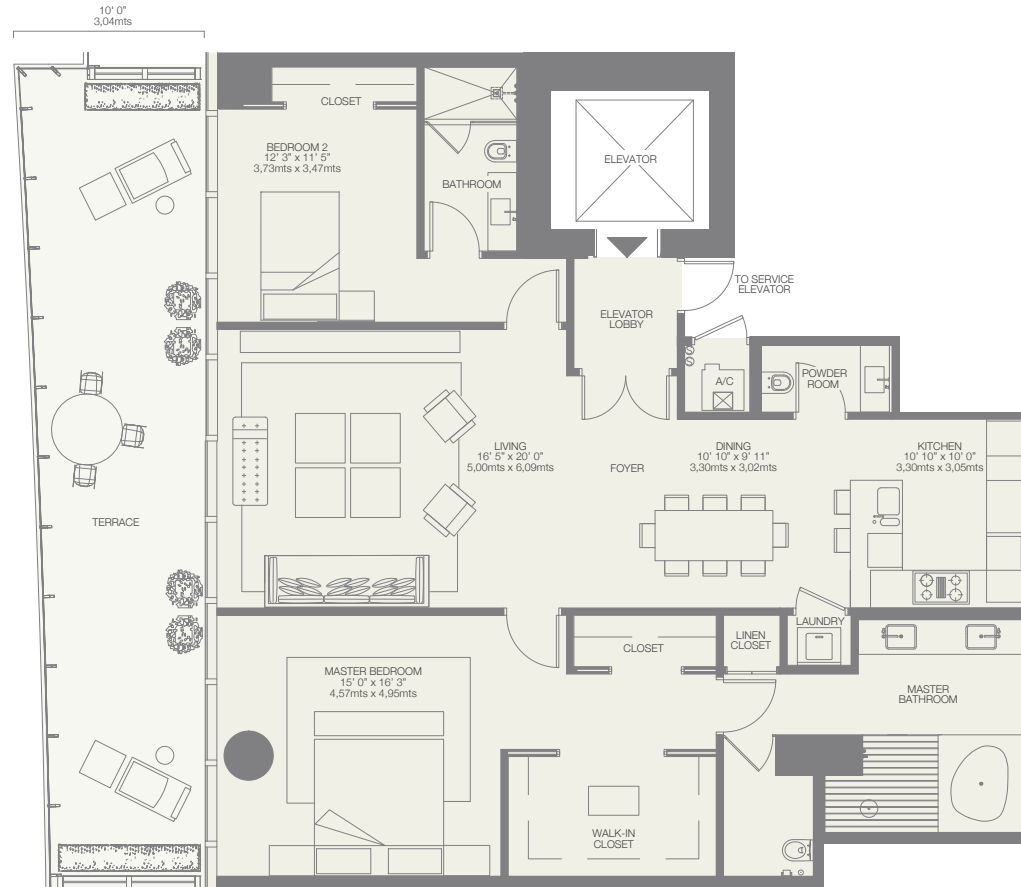
RESIDENCE 1,778 *sq.ft.* 165 *sq.mt.*

TERRACE 465 *sq.ft.* 43 *sq.mt.*

Total 2,243 *sq.ft.* 208 *sq.mt.*



WEST VIEW



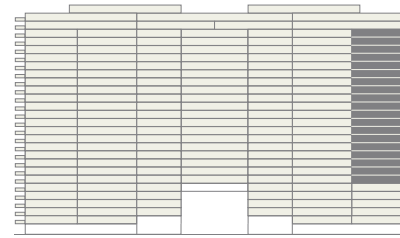
Stated dimensions are measured to the exterior boundaries of the exterior walls and the centerline of interior demising walls and in fact vary from the dimensions that would be determined by using the description and definition of the "Unit" set forth in the Declaration (which generally only includes the interior airspace between the perimeter walls and excludes interior structural components). For the square footage of the "Unit" calculated in the manner set forth in the Declaration, see Exhibit "3" to the Declaration. Additionally, measurements of rooms set forth on any floor plan are generally taken at the greatest points of each given room (as if the room were a perfect rectangle), without regard for any cutouts. Accordingly, the area of the actual room will typically be smaller than the product obtained by multiplying the stated length times width. All dimensions are approximate, and all floor plans and development plans are subject to change.

01N

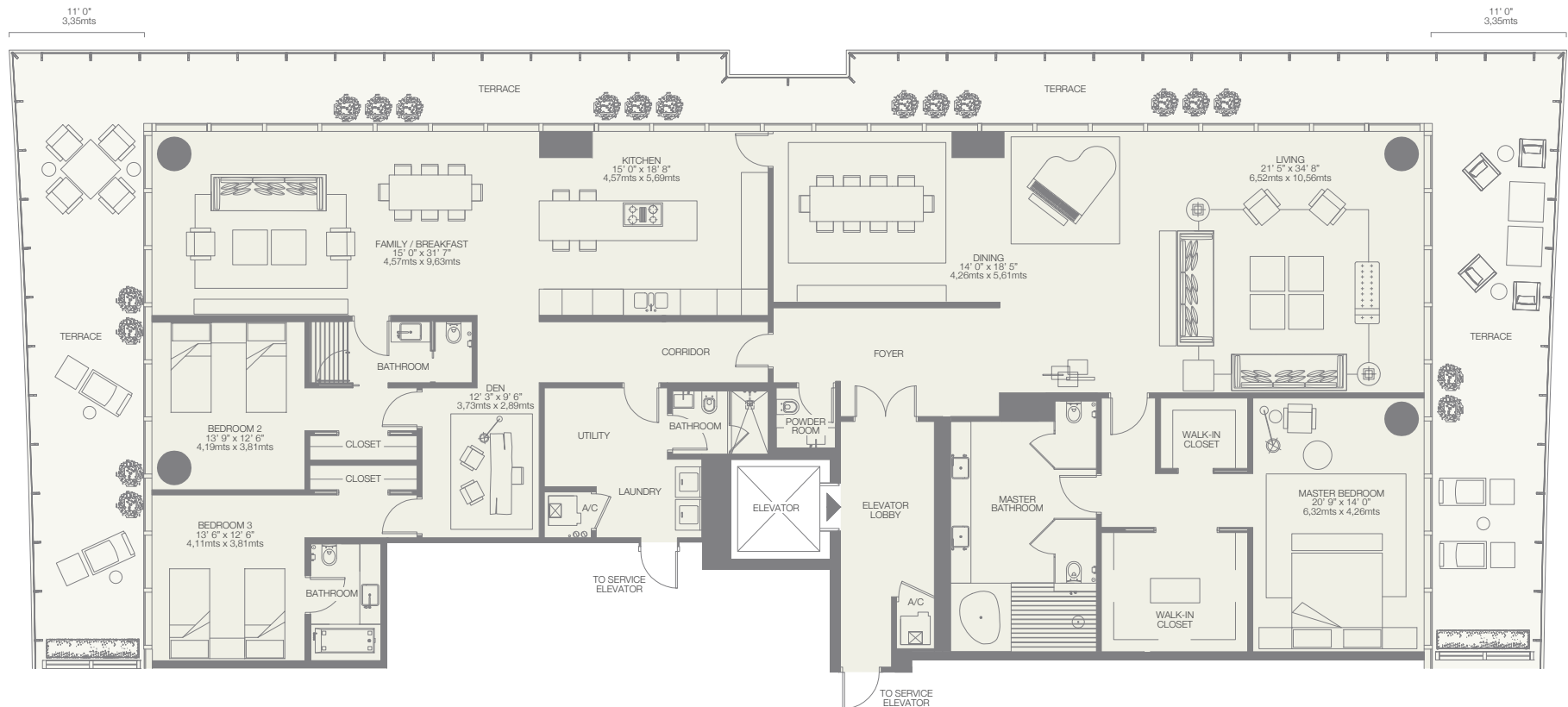
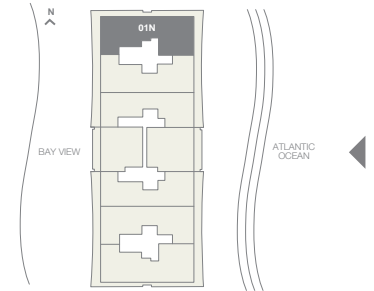
7th-26th Floor


3 BEDROOMS - 4 ½ BATHROOMS - DEN - FAMILY

RESIDENCE	4,185 <i>sq.ft.</i>	388 <i>sq. mt.</i>
TERRACE	1,595 <i>sq.ft.</i>	148 <i>sq. mt.</i>
<hr/>		
Total	5,780 <i>sq.ft.</i>	536 <i>sq. mt.</i>



EAST VIEW



 Stated dimensions are measured to the exterior boundaries of the exterior walls and the centerline of interior demising walls and in fact vary from the dimensions that would be determined by using the description and definition of the "Unit" set forth in the Declaration (which generally only includes the interior airspace between the perimeter walls and excludes interior structural components). For the square footage of the "Unit" calculated in the manner set forth in the Declaration, see Exhibit "3" to the Declaration. Additionally, measurements of rooms set forth on any floor plan are generally taken at the greatest points of each given room (as if the room were a perfect rectangle), without regard for any cutouts. Accordingly, the area of the actual room will typically be smaller than the product obtained by multiplying the stated length times width. All dimensions are approximate, and all floor plans and development plans are subject to change.

01S

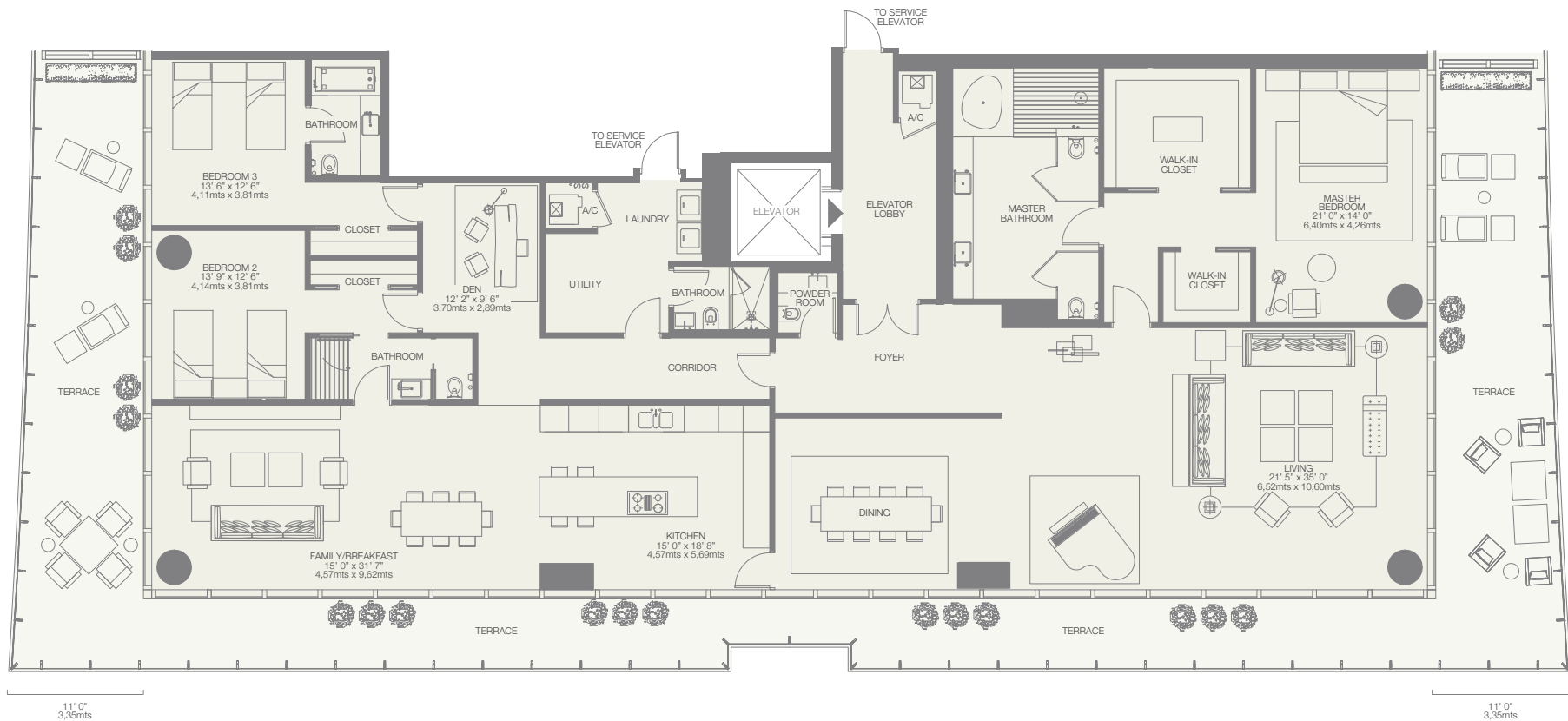
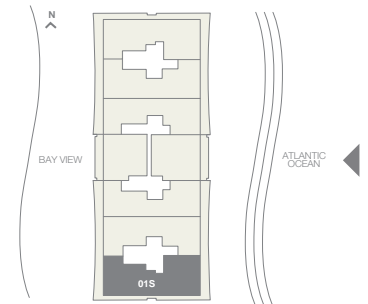
7th-26th Floor

3 BEDROOMS - 4 ½ BATHROOMS - DEN - FAMILY

RESIDENCE	4,185 <i>sq.ft.</i> 388 <i>sq. mt.</i>
TERRACE	1,595 <i>sq.ft.</i> 148 <i>sq. mt.</i>
Total	5,780 <i>sq.ft.</i> 536 <i>sq. mt.</i>



EAST VIEW



Stated dimensions are measured to the exterior boundaries of the exterior walls and the centerline of interior demising walls and in fact vary from the dimensions that would be determined by using the description and definition of the "Unit" set forth in the Declaration (which generally only includes the interior airspace between the perimeter walls and excludes interior structural components). For the square footage of the "Unit" calculated in the manner set forth in the Declaration, see Exhibit "3" to the Declaration. Additionally, measurements of rooms set forth on any floor plan are generally taken at the greatest points of each given room (as if the room were a perfect rectangle), without regard for any cutouts. Accordingly, the area of the actual room will typically be smaller than the product obtained by multiplying the stated length times width. All dimensions are approximate, and all floor plans and development plans are subject to change.

02SE-M

2nd, 7th-12th Floor

2 BEDROOMS - 3 BATHROOMS - DEN

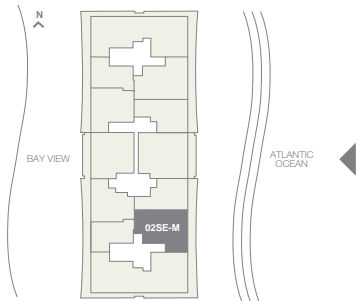
RESIDENCE 2,233 *sq.ft.* 207 *sq.mt.*

TERRACE 425 *sq.ft.* 40 *sq.mt.*

Total 2,658 *sq.ft.* 247 *sq.mt.*



EAST VIEW



Stated dimensions are measured to the exterior boundaries of the exterior walls and the centerline of interior demising walls and in fact vary from the dimensions that would be determined by using the description and definition of the "Unit" set forth in the Declaration (which generally only includes the interior airspace between the perimeter walls and excludes interior structural components). For the square footage of the "Unit" calculated in the manner set forth in the Declaration, see Exhibit "3" to the Declaration. Additionally, measurements of rooms set forth on any floor plan are generally taken at the greatest points of each given room (as if the room were a perfect rectangle), without regard for any cutouts. Accordingly, the area of the actual room will typically be smaller than the product obtained by multiplying the stated length times width. All dimensions are approximate, and all floor plans and development plans are subject to change.

O2NE-M

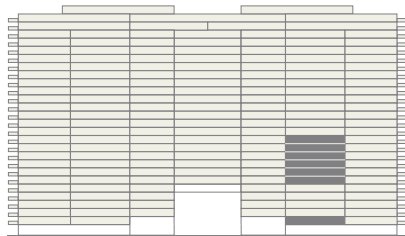
2nd, 7th-12th Floor

2 BEDROOMS - 3 BATHROOMS - DEN

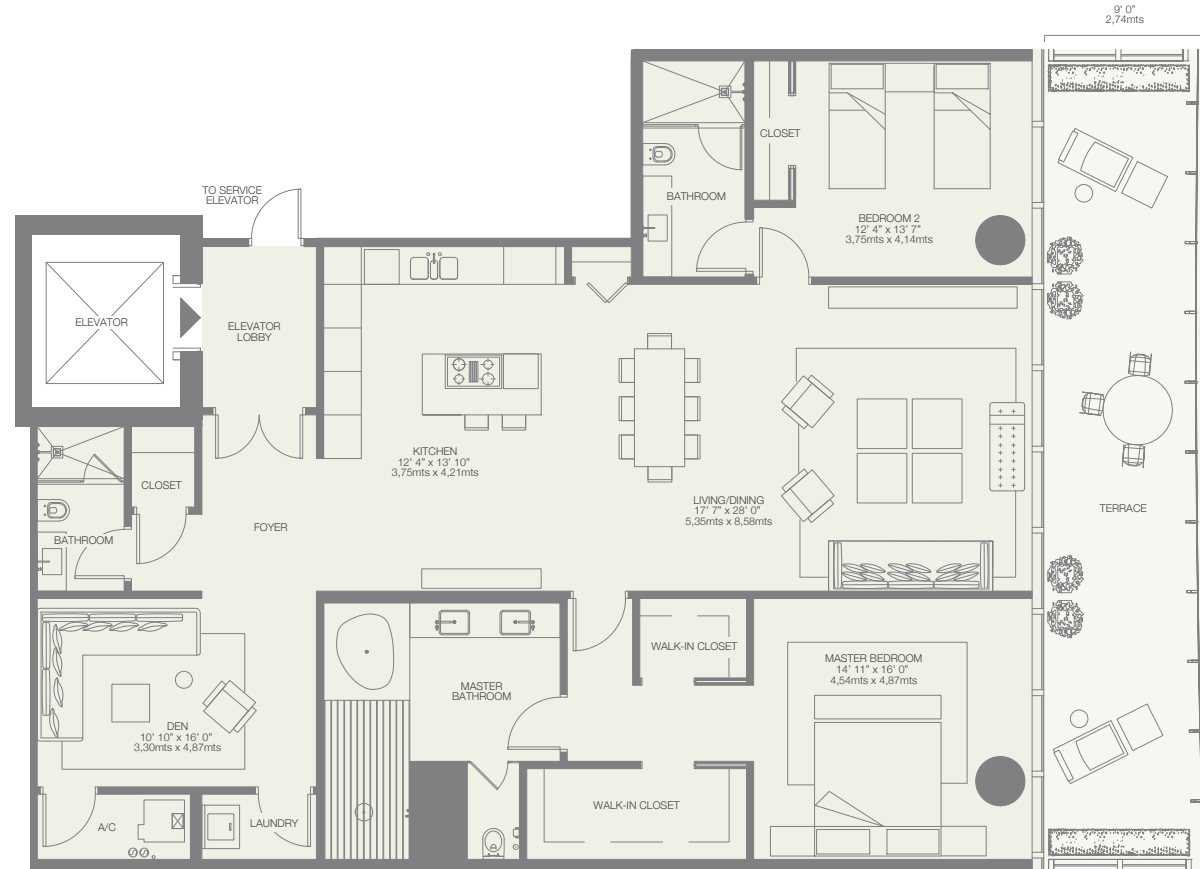
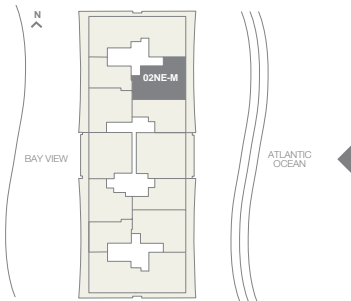
RESIDENCE 2,233 *sq.ft.* 207 *sq.mt.*

TERRACE 425 *sq.ft.* 40 *sq.mt.*

Total 2,658 *sq.ft.* 247 *sq.mt.*



EAST VIEW



Stated dimensions are measured to the exterior boundaries of the exterior walls and the centerline of interior demising walls and in fact vary from the dimensions that would be determined by using the description and definition of the "Unit" set forth in the Declaration (which generally only includes the interior airspace between the perimeter walls and excludes interior structural components). For the square footage of the "Unit" calculated in the manner set forth in the Declaration, see Exhibit "3" to the Declaration. Additionally, measurements of rooms set forth on any floor plan are generally taken at the greatest points of each given room (as if the room were a perfect rectangle), without regard for any cutouts. Accordingly, the area of the actual room will typically be smaller than the product obtained by multiplying the stated length times width. All dimensions are approximate, and all floor plans and development plans are subject to change.

03SE-M

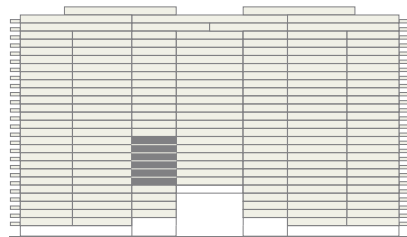
7th-12th Floor

1 BEDROOM - 2 BATHROOMS - DEN

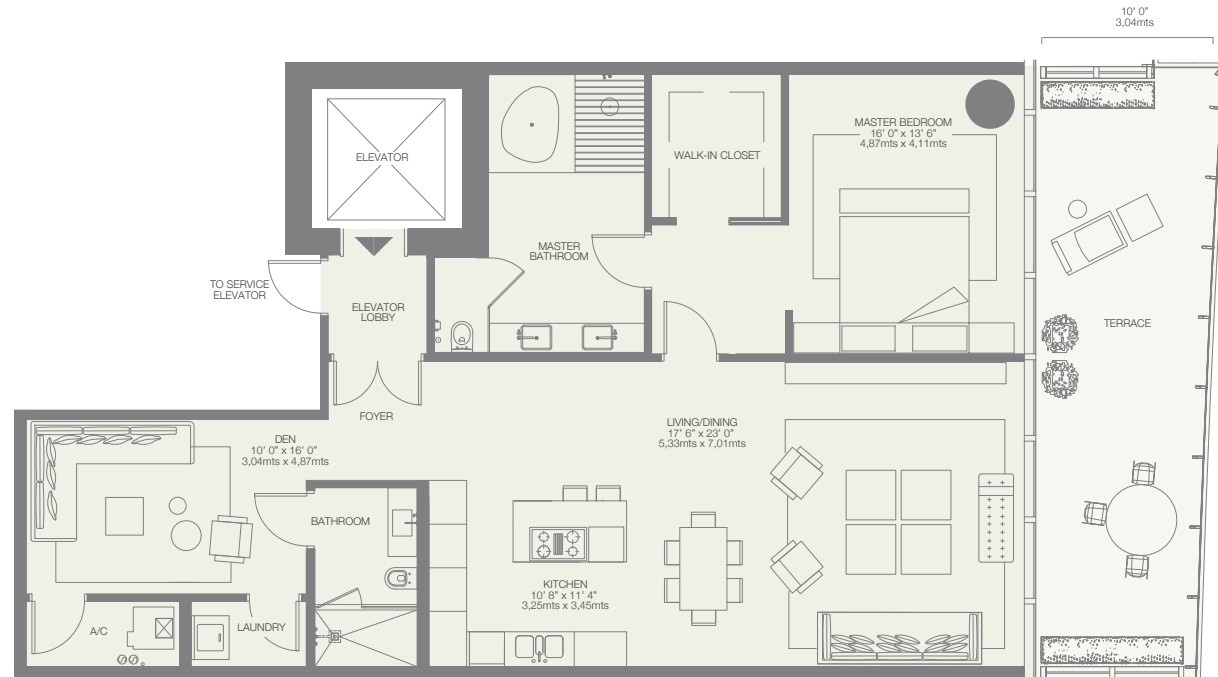
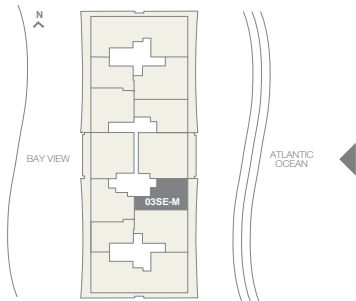
RESIDENCE 1,581 *sq.ft.* 147 *sq.mt.*

TERRACE 355 *sq.ft.* 33 *sq.mt.*

Total 1,936 *sq.ft.* 180 *sq.mt.*



EAST VIEW



Stated dimensions are measured to the exterior boundaries of the exterior walls and the centerline of interior demising walls and in fact vary from the dimensions that would be determined by using the description and definition of the "Unit" set forth in the Declaration (which generally only includes the interior airspace between the perimeter walls and excludes interior structural components). For the square footage of the "Unit" calculated in the manner set forth in the Declaration, see Exhibit "3" to the Declaration. Additionally, measurements of rooms set forth on any floor plan are generally taken at the greatest points of each given room (as if the room were a perfect rectangle), without regard for any cutouts. Accordingly, the area of the actual room will typically be smaller than the product obtained by multiplying the stated length times width. All dimensions are approximate, and all floor plans and development plans are subject to change.

03NE-M

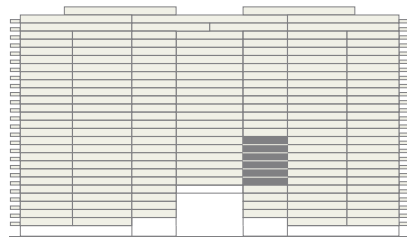
7th-12th Floor

1 BEDROOM - 2 BATHROOMS - DEN

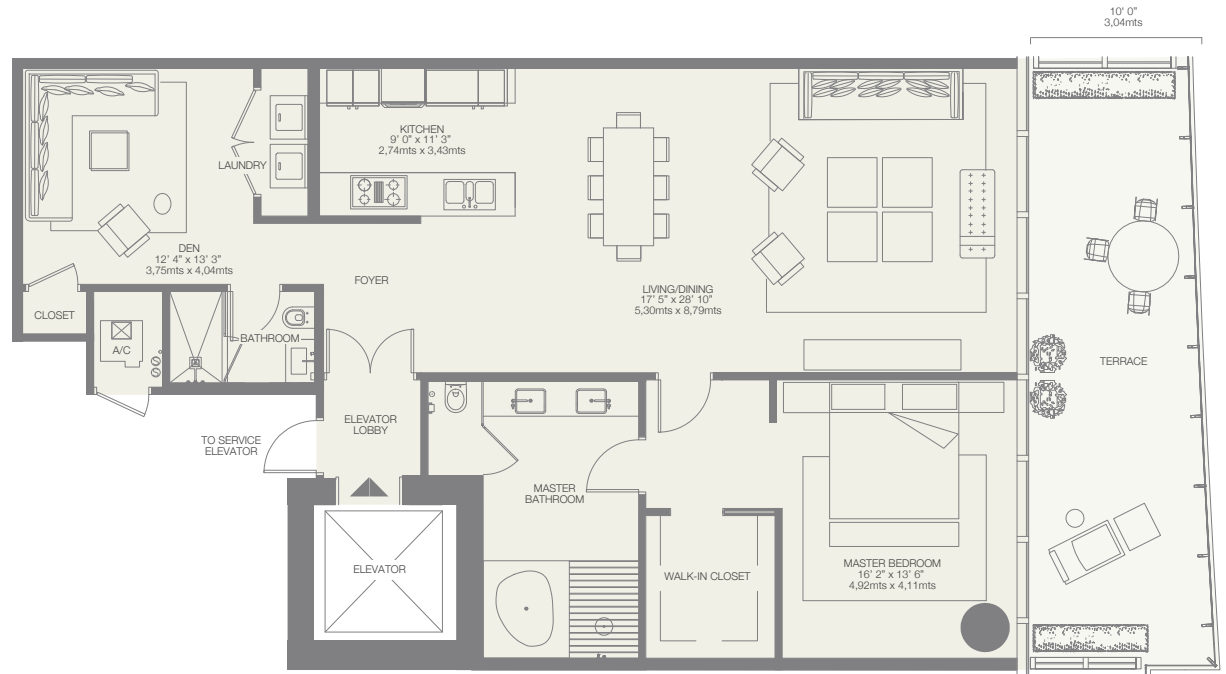
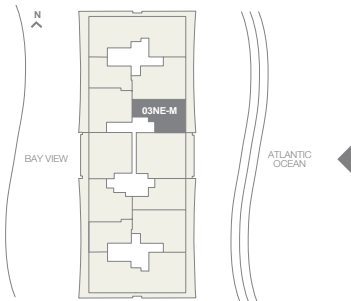
RESIDENCE 1,632 *sq.ft.* 152 *sq.mt.*

TERRACE 355 *sq.ft.* 33 *sq.mt.*

Total 1,987 *sq.ft.* 185 *sq.mt.*



EAST VIEW



Stated dimensions are measured to the exterior boundaries of the exterior walls and the centerline of interior demising walls and in fact vary from the dimensions that would be determined by using the description and definition of the "Unit" set forth in the Declaration (which generally only includes the interior airspace between the perimeter walls and excludes interior structural components). For the square footage of the "Unit" calculated in the manner set forth in the Declaration, see Exhibit "3" to the Declaration. Additionally, measurements of rooms set forth on any floor plan are generally taken at the greatest points of each given room (as if the room were a perfect rectangle), without regard for any cutouts. Accordingly, the area of the actual room will typically be smaller than the product obtained by multiplying the stated length times width. All dimensions are approximate, and all floor plans and development plans are subject to change.

06E

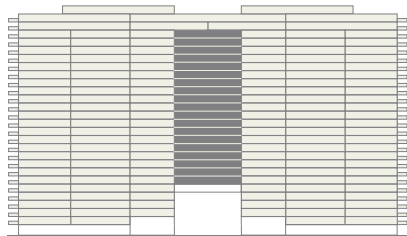
7th-26th Floor

2 BEDROOMS - 3 1/2 BATHROOMS - DEN

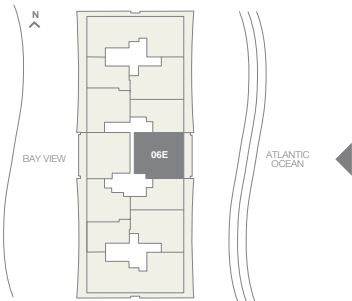
RESIDENCE 2,625 *sq.ft.* 243 *sq.mt.*

TERRACE 445 *sq.ft.* 41 *sq.mt.*

Total 3,070 *sq.ft.* 284 *sq.mt.*



EAST VIEW



Stated dimensions are measured to the exterior boundaries of the exterior walls and the centerline of interior demising walls and in fact vary from the dimensions that would be determined by using the description and definition of the "Unit" set forth in the Declaration (which generally only includes the interior airspace between the perimeter walls and excludes interior structural components). For the square footage of the "Unit" calculated in the manner set forth in the Declaration, see Exhibit "3" to the Declaration. Additionally, measurements of rooms set forth on any floor plan are generally taken at the greatest points of each given room (as if the room were a perfect rectangle), without regard for any cutouts. Accordingly, the area of the actual room will typically be smaller than the product obtained by multiplying the stated length times width. All dimensions are approximate, and all floor plans and development plans are subject to change.

07W

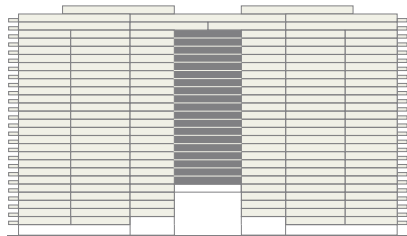
7th-26th Floor

2 BEDROOMS - 3 BATHROOMS - DEN

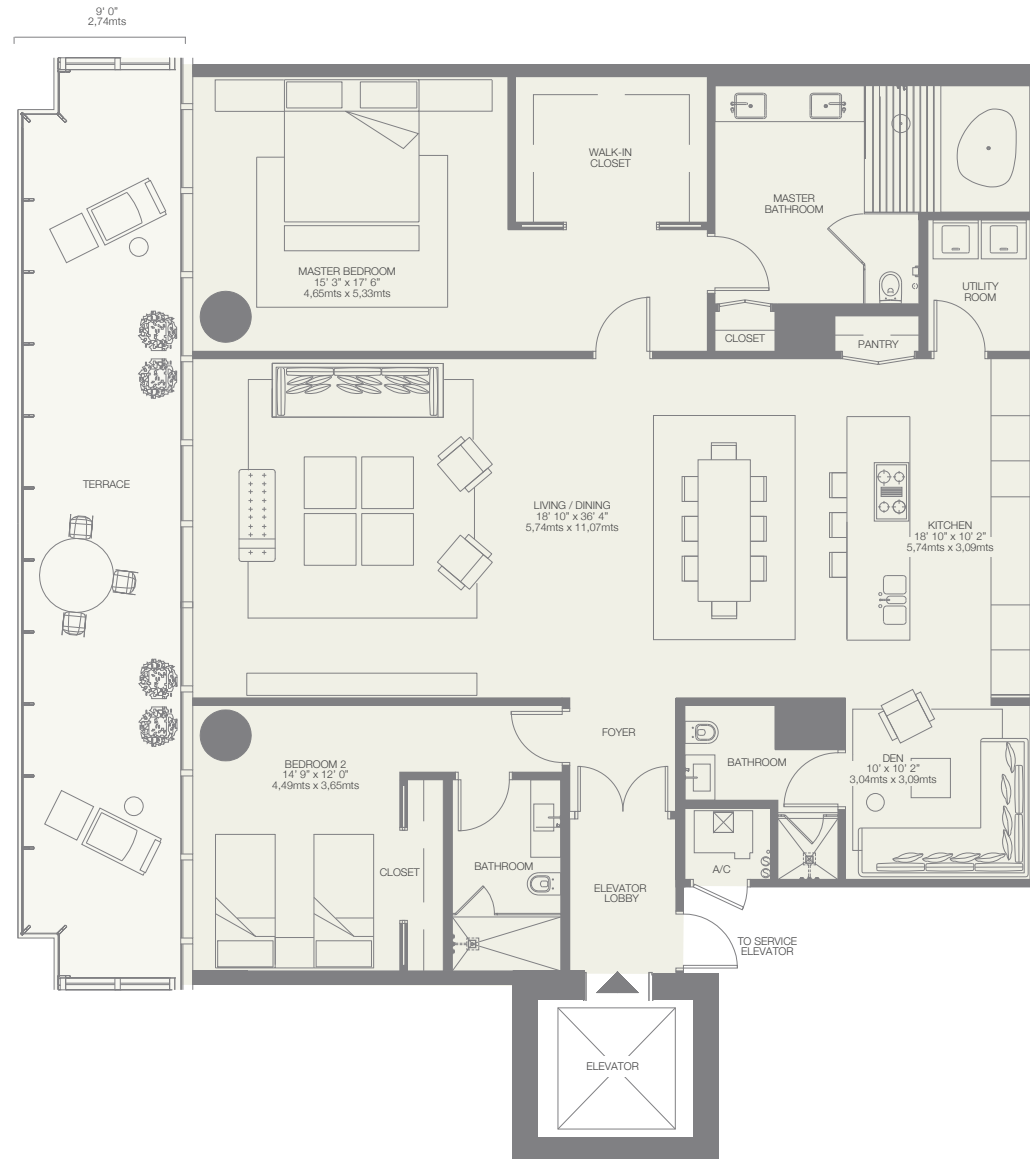
RESIDENCE 2,296 *sq.ft.* 214 *sq.mt.*

TERRACE 445 *sq.ft.* 41 *sq.mt.*

Total 2,741 *sq.ft.* 255 *sq.mt.*



WEST VIEW



Stated dimensions are measured to the exterior boundaries of the exterior walls and the centerline of interior demising walls and in fact vary from the dimensions that would be determined by using the description and definition of the "Unit" set forth in the Declaration (which generally only includes the interior airspace between the perimeter walls and excludes interior structural components). For the square footage of the "Unit" calculated in the manner set forth in the Declaration, see Exhibit "3" to the Declaration. Additionally, measurements of rooms set forth on any floor plan are generally taken at the greatest points of each given room (as if the room were a perfect rectangle), without regard for any cutouts. Accordingly, the area of the actual room will typically be smaller than the product obtained by multiplying the stated length times width. All dimensions are approximate, and all floor plans and development plans are subject to change.

02S

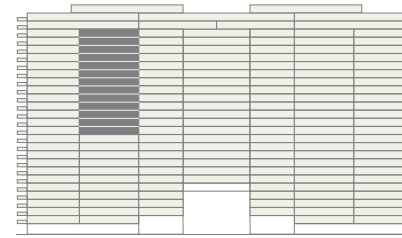
14th-26th Floor

3 BEDROOMS - 4 ½ BATHROOMS - FAMILY

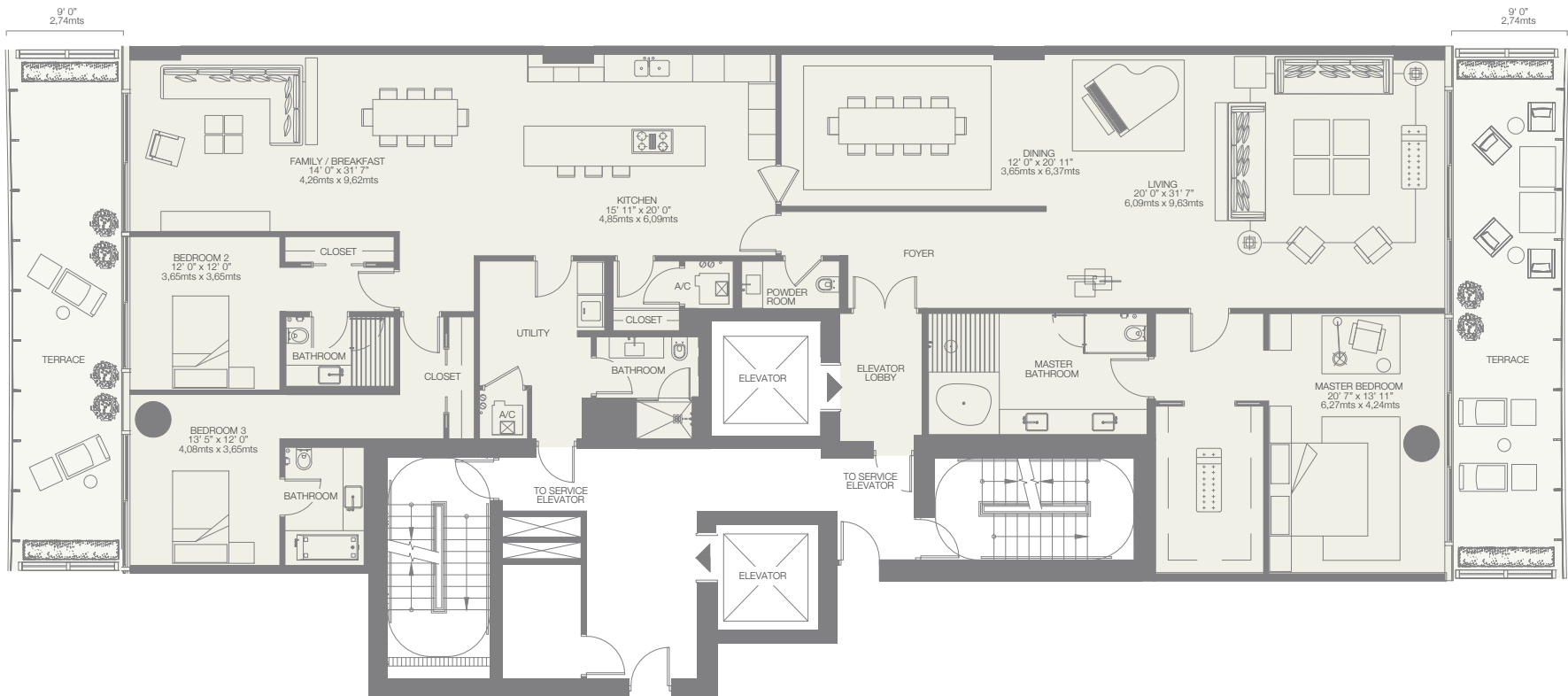
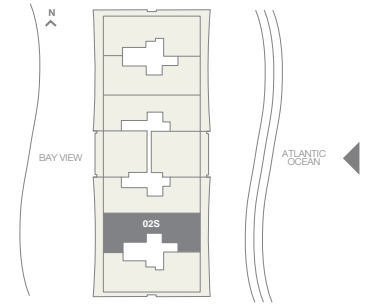
RESIDENCE 3,592 sq.ft. 334 sq. mt.

TERRACE 745 sq.ft. 69 sq. mt.

Total 4,337 sq.ft. 403 sq. mt.



EAST VIEW



Stated dimensions are measured to the exterior boundaries of the exterior walls and the centerline of interior demising walls and in fact vary from the dimensions that would be determined by using the description and definition of the "Unit" set forth in the Declaration (which generally only includes the interior airspace between the perimeter walls and excludes interior structural components). For the square footage of the "Unit" calculated in the manner set forth in the Declaration, see Exhibit "3" to the Declaration. Additionally, measurements of rooms set forth on any floor plan are generally taken at the greatest points of each given room (as if the room were a perfect rectangle), without regard for any cutouts. Accordingly, the area of the actual room will typically be smaller than the product obtained by multiplying the stated length times width. All dimensions are approximate, and all floor plans and development plans are subject to change.

03S

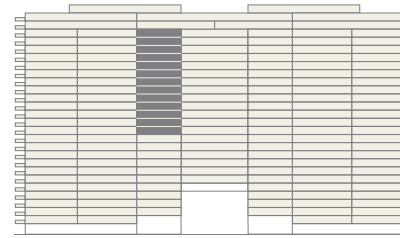
14th-26th Floor

3 BEDROOMS - 4 ½ BATHROOMS - FAMILY

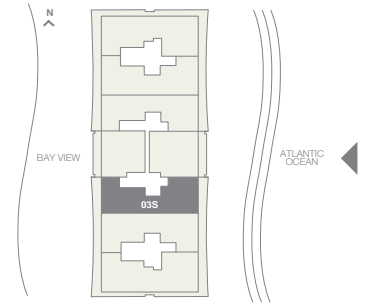
RESIDENCE 3,408 sq.ft. 316 sq. mt.

TERRACE 790 sq.ft. 73 sq. mt.

Total 4,198 sq.ft. 389 sq. mt.



EAST VIEW



Stated dimensions are measured to the exterior boundaries of the exterior walls and the centerline of interior demising walls and in fact vary from the dimensions that would be determined by using the description and definition of the "Unit" set forth in the Declaration (which generally only includes the interior airspace between the perimeter walls and excludes interior structural components). For the square footage of the "Unit" calculated in the manner set forth in the Declaration, see Exhibit "3" to the Declaration. Additionally, measurements of rooms set forth on any floor plan are generally taken at the greatest points of each given room (as if the room were a perfect rectangle), without regard for any cutouts. Accordingly, the area of the actual room will typically be smaller than the product obtained by multiplying the stated length times width. All dimensions are approximate, and all floor plans and development plans are subject to change.

03N

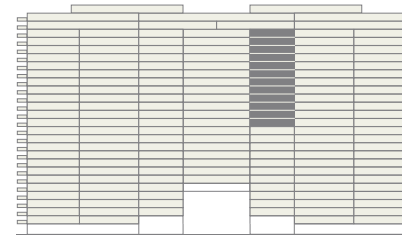
15th-26th Floor

3 BEDROOMS - 4 ½ BATHROOMS - FAMILY

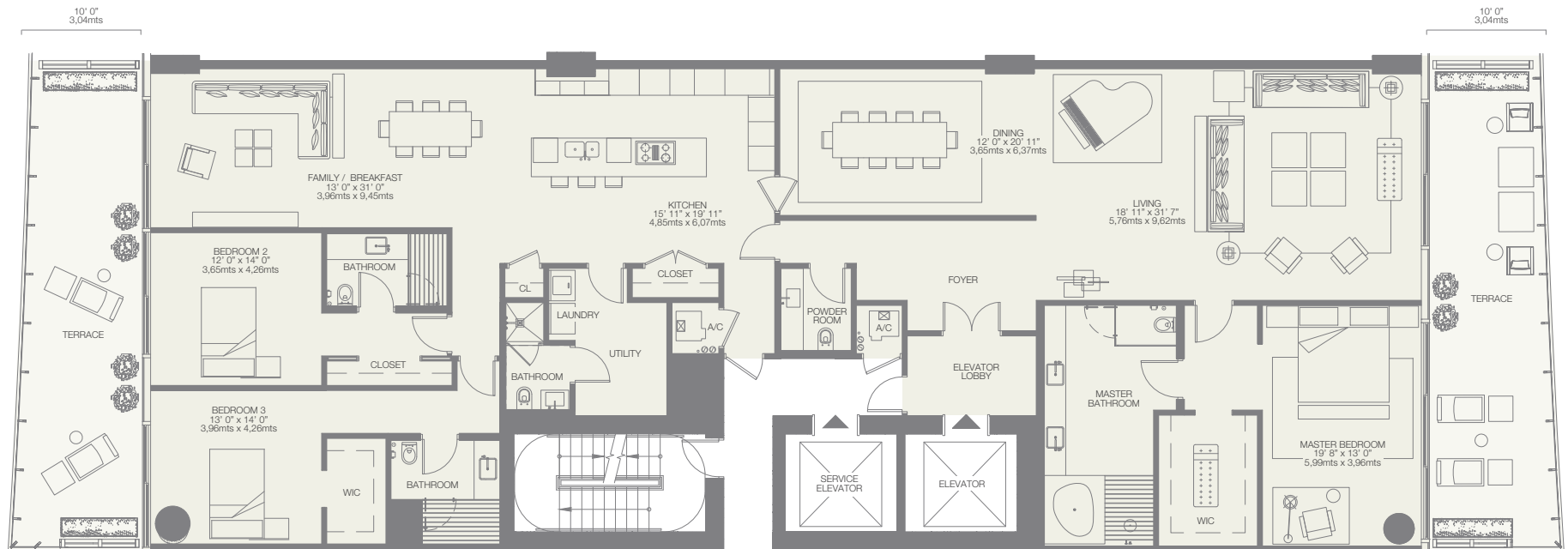
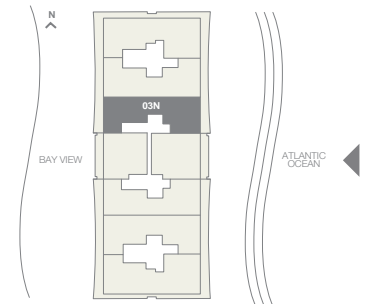
RESIDENCE 3,607 sq.ft. 335 sq. mt.

TERRACE 790 sq.ft. 73 sq. mt.

Total 4,397 sq.ft. 408 sq. mt.



EAST VIEW



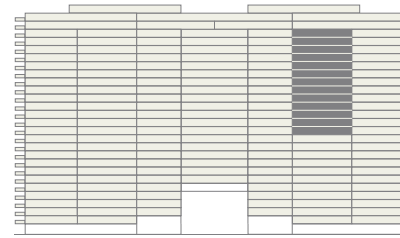
Stated dimensions are measured to the exterior boundaries of the exterior walls and the centerline of interior demising walls and in fact vary from the dimensions that would be determined by using the description and definition of the "Unit" set forth in the Declaration (which generally only includes the interior airspace between the perimeter walls and excludes interior structural components). For the square footage of the "Unit" calculated in the manner set forth in the Declaration, see Exhibit "3" to the Declaration. Additionally, measurements of rooms set forth on any floor plan are generally taken at the greatest points of each given room (as if the room were a perfect rectangle), without regard for any cutouts. Accordingly, the area of the actual room will typically be smaller than the product obtained by multiplying the stated length times width. All dimensions are approximate, and all floor plans and development plans are subject to change.

02N

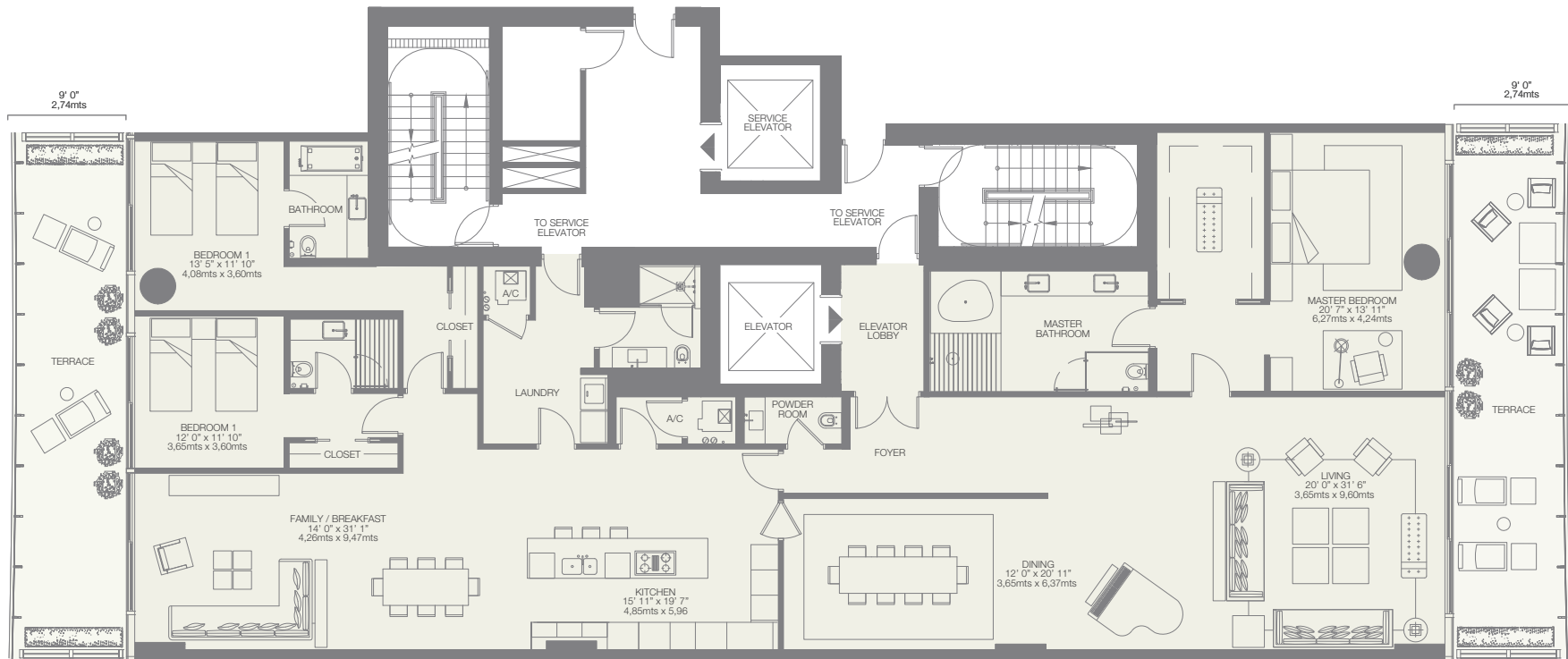
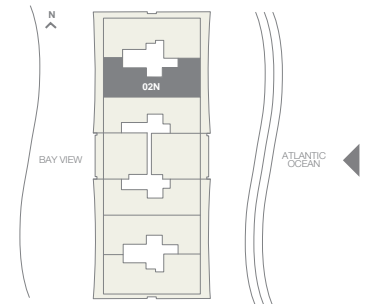
14th-26th Floor

3 BEDROOMS - 4 ½ BATHROOMS - FAMILY

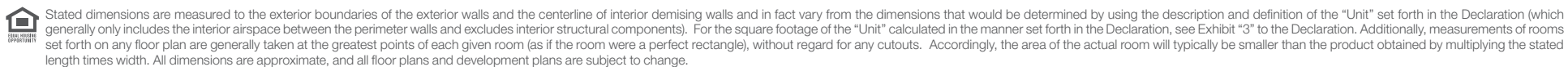
RESIDENCE	3,592 <i>sq.ft.</i> 334 <i>sq. mt.</i>
TERRACE	745 <i>sq.ft.</i> 69 <i>sq. mt.</i>
Total	4,337 <i>sq.ft.</i> 403 <i>sq. mt.</i>

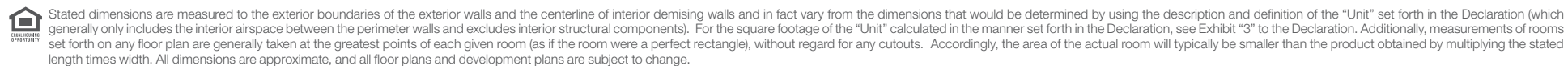


EAST VIEW



Stated dimensions are measured to the exterior boundaries of the exterior walls and the centerline of interior demising walls and in fact vary from the dimensions that would be determined by using the description and definition of the "Unit" set forth in the Declaration (which generally only includes the interior airspace between the perimeter walls and excludes interior structural components). For the square footage of the "Unit" calculated in the manner set forth in the Declaration, see Exhibit "3" to the Declaration. Additionally, measurements of rooms set forth on any floor plan are generally taken at the greatest points of each given room (as if the room were a perfect rectangle), without regard for any cutouts. Accordingly, the area of the actual room will typically be smaller than the product obtained by multiplying the stated length times width. All dimensions are approximate, and all floor plans and development plans are subject to change.





PH-01S

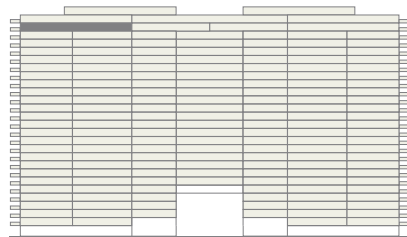
27th Floor

4 BEDROOMS - 6 1/2 BATHROOMS - FAMILY - DEN

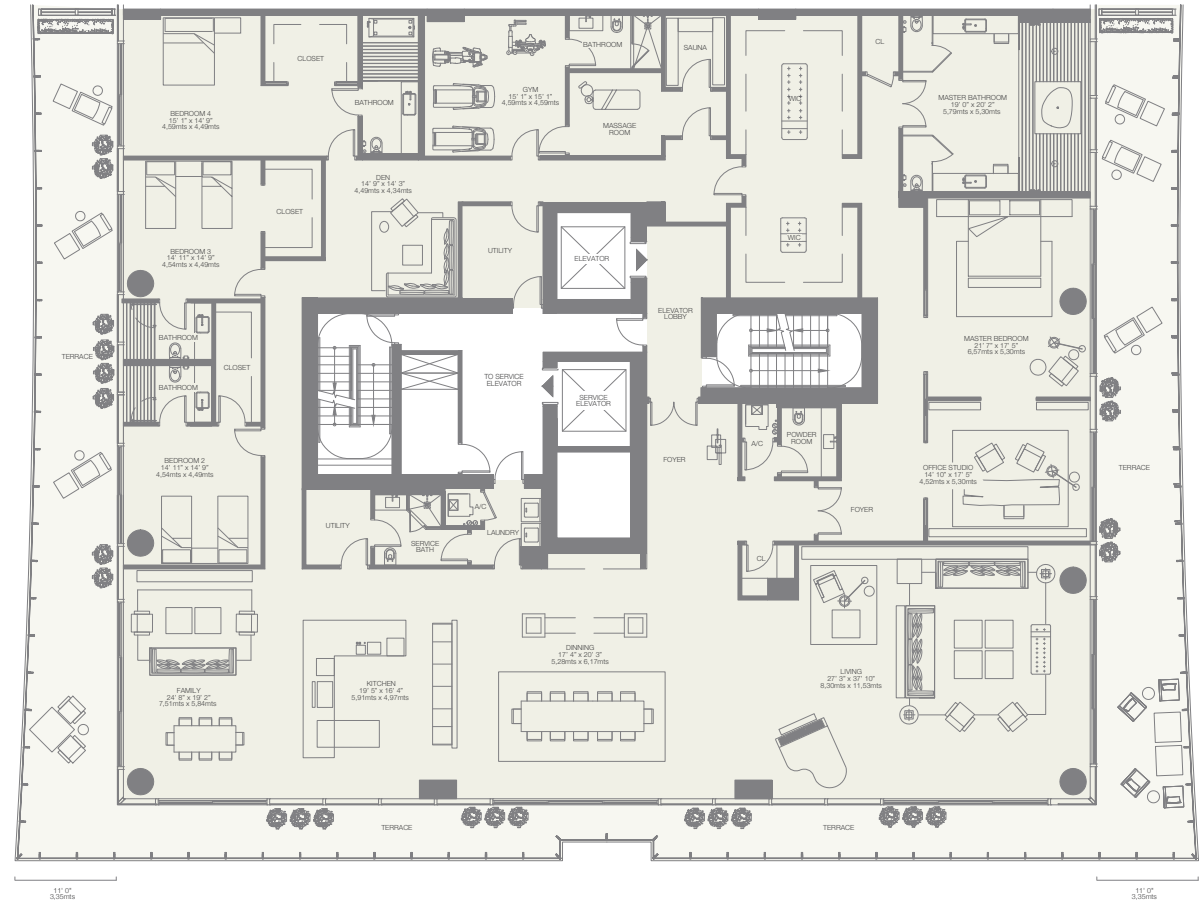
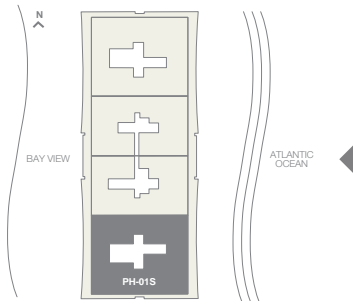
RESIDENCE 7,774 sq.ft. 722 sq.mt.

TERRACE 2,335 sq.ft. 217 sq.mt.

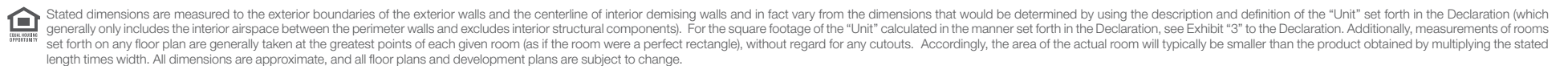
Total 10,109 sq.ft. 939 sq.mt.



EAST VIEW



Stated dimensions are measured to the exterior boundaries of the exterior walls and the centerline of interior demising walls and in fact vary from the dimensions that would be determined by using the description and definition of the "Unit" set forth in the Declaration (which generally only includes the interior airspace between the perimeter walls and excludes interior structural components). For the square footage of the "Unit" calculated in the manner set forth in the Declaration, see Exhibit "3" to the Declaration. Additionally, measurements of rooms set forth on any floor plan are generally taken at the greatest points of each given room (as if the room were a perfect rectangle), without regard for any cutouts. Accordingly, the area of the actual room will typically be smaller than the product obtained by multiplying the stated length times width. All dimensions are approximate, and all floor plans and development plans are subject to change.



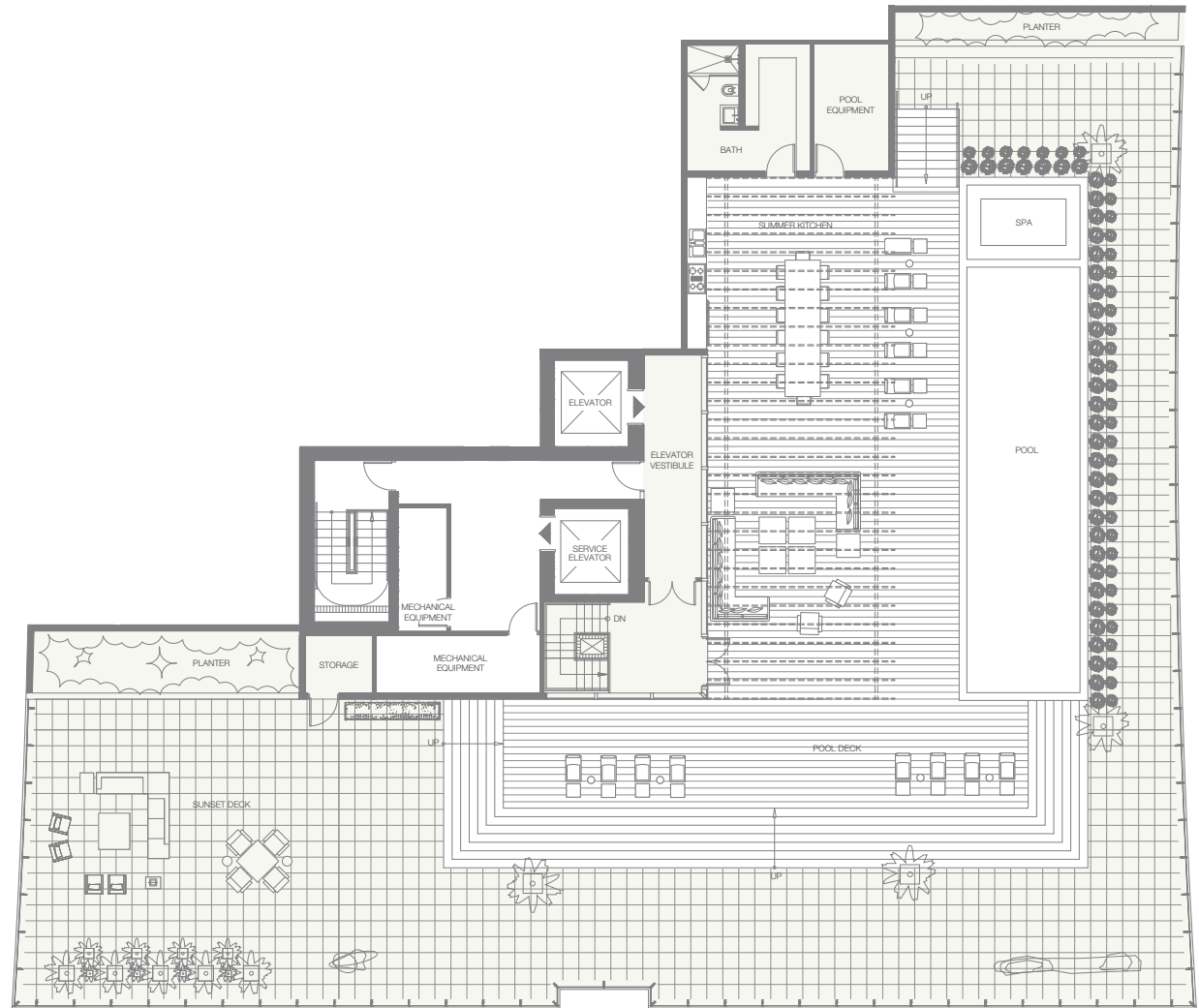
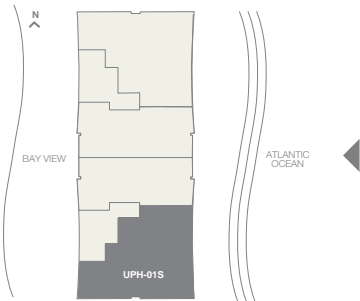
UPH01S

28th Floor - Terrace

RESIDENCE	9,371 sq. ft. 870 sq. mt.
TERRACE	9,950 sq. ft. 924 sq. mt.
Total	19,321 sq. ft. 1,794 sq. mt.



EAST VIEW



Stated dimensions are measured to the exterior boundaries of the exterior walls and the centerline of interior demising walls and in fact vary from the dimensions that would be determined by using the description and definition of the "Unit" set forth in the Declaration (which generally only includes the interior airspace between the perimeter walls and excludes interior structural components). For the square footage of the "Unit" calculated in the manner set forth in the Declaration, see Exhibit "3" to the Declaration. Additionally, measurements of rooms set forth on any floor plan are generally taken at the greatest points of each given room (as if the room were a perfect rectangle), without regard for any cutouts. Accordingly, the area of the actual room will typically be smaller than the product obtained by multiplying the stated length times width. All dimensions are approximate, and all floor plans and development plans are subject to change.

UPH01N

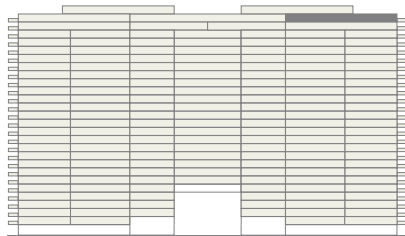
28th Floor

4 BEDROOMS - 7 1/2 BATHROOMS - FAMILY - DEN

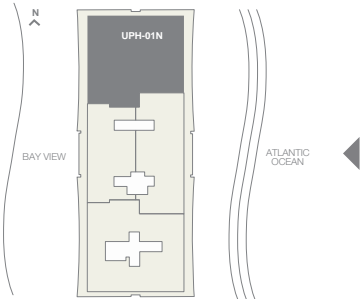
RESIDENCE 9,371 sq. ft. 870 sq. mt.

TERRACE 9,950 sq. ft. 924 sq. mt.

Total 19,321 sq. ft. 1,794 sq. mt.



EAST VIEW

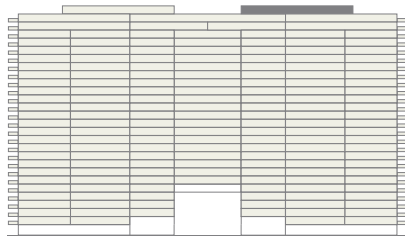


Stated dimensions are measured to the exterior boundaries of the exterior walls and the centerline of interior demising walls and in fact vary from the dimensions that would be determined by using the description and definition of the "Unit" set forth in the Declaration (which generally only includes the interior airspace between the perimeter walls and excludes interior structural components). For the square footage of the "Unit" calculated in the manner set forth in the Declaration, see Exhibit "3" to the Declaration. Additionally, measurements of rooms set forth on any floor plan are generally taken at the greatest points of each given room (as if the room were a perfect rectangle), without regard for any cutouts. Accordingly, the area of the actual room will typically be smaller than the product obtained by multiplying the stated length times width. All dimensions are approximate, and all floor plans and development plans are subject to change.

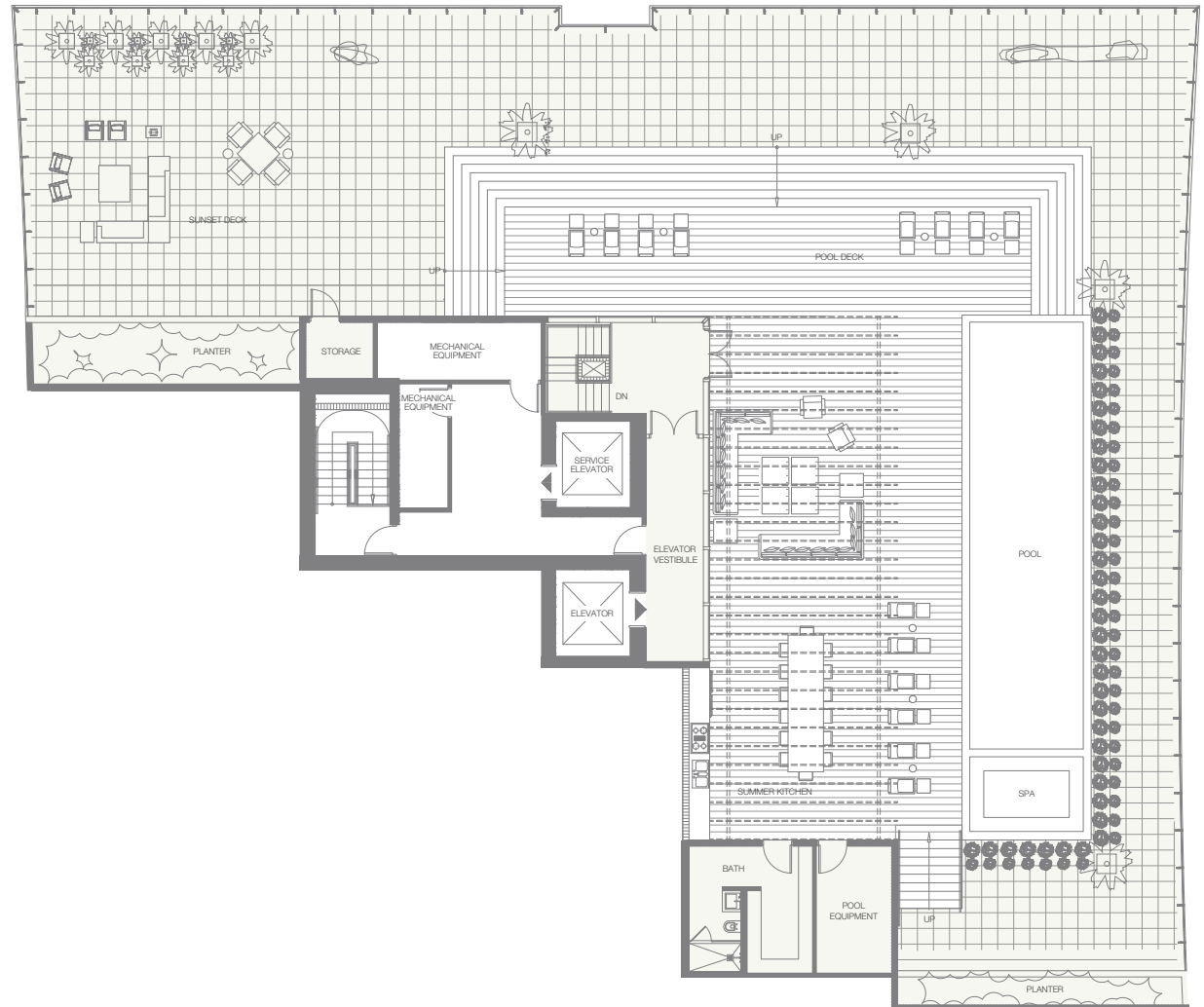
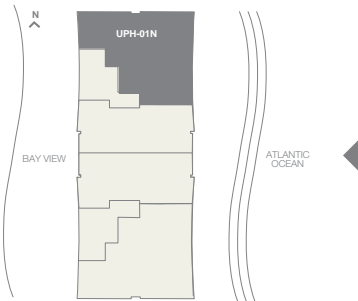
UPH01N

28th Floor - Terrace

RESIDENCE	9,371 sq. ft. 870 sq. mt.
TERRACE	9,950 sq. ft. 924 sq. mt.
Total	19,321 sq. ft. 1,794 sq. mt.



EAST VIEW



Stated dimensions are measured to the exterior boundaries of the exterior walls and the centerline of interior demising walls and in fact vary from the dimensions that would be determined by using the description and definition of the "Unit" set forth in the Declaration (which generally only includes the interior airspace between the perimeter walls and excludes interior structural components). For the square footage of the "Unit" calculated in the manner set forth in the Declaration, see Exhibit "3" to the Declaration. Additionally, measurements of rooms set forth on any floor plan are generally taken at the greatest points of each given room (as if the room were a perfect rectangle), without regard for any cutouts. Accordingly, the area of the actual room will typically be smaller than the product obtained by multiplying the stated length times width. All dimensions are approximate, and all floor plans and development plans are subject to change.

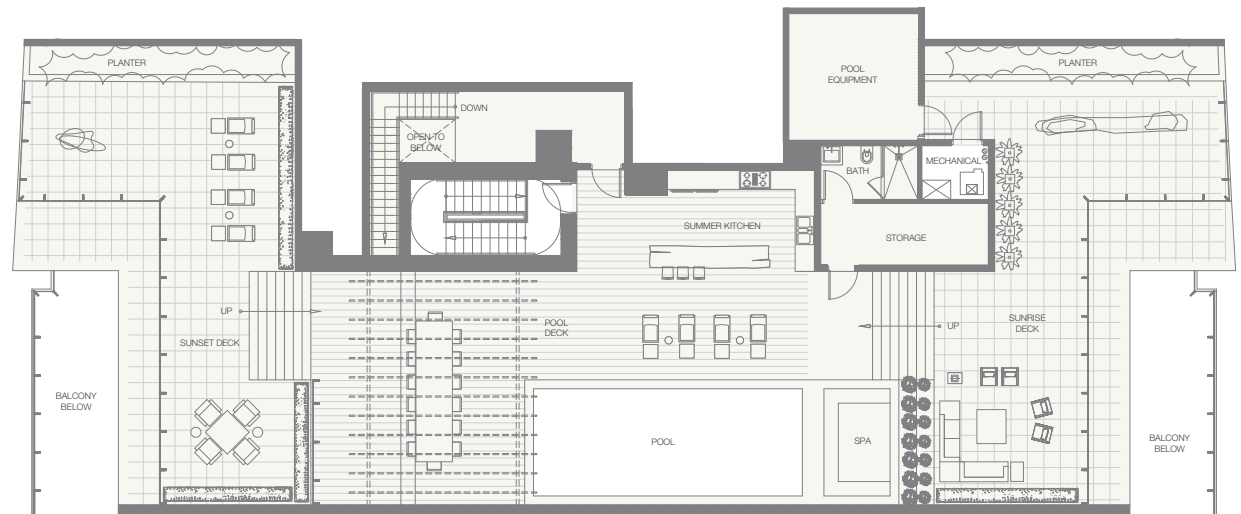
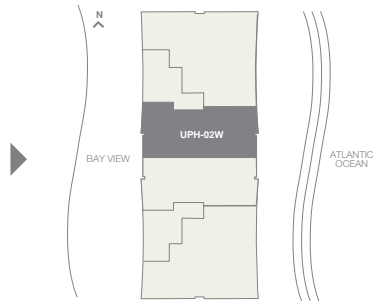
UPH02W

28th Floor - Terrace

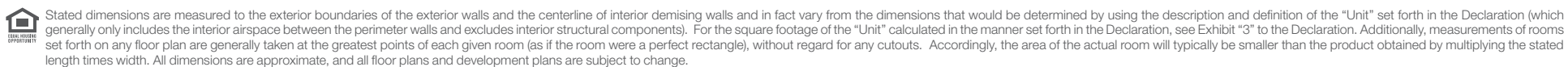
RESIDENCE	5,183 sq. ft. 481 sq. mt.
TERRACE	5,193 sq. ft. 482 sq. mt.
Total	10,376 sq. ft. 963 sq. mt.



WEST VIEW



Stated dimensions are measured to the exterior boundaries of the exterior walls and the centerline of interior demising walls and in fact vary from the dimensions that would be determined by using the description and definition of the "Unit" set forth in the Declaration (which generally only includes the interior airspace between the perimeter walls and excludes interior structural components). For the square footage of the "Unit" calculated in the manner set forth in the Declaration, see Exhibit "3" to the Declaration. Additionally, measurements of rooms set forth on any floor plan are generally taken at the greatest points of each given room (as if the room were a perfect rectangle), without regard for any cutouts. Accordingly, the area of the actual room will typically be smaller than the product obtained by multiplying the stated length times width. All dimensions are approximate, and all floor plans and development plans are subject to change.



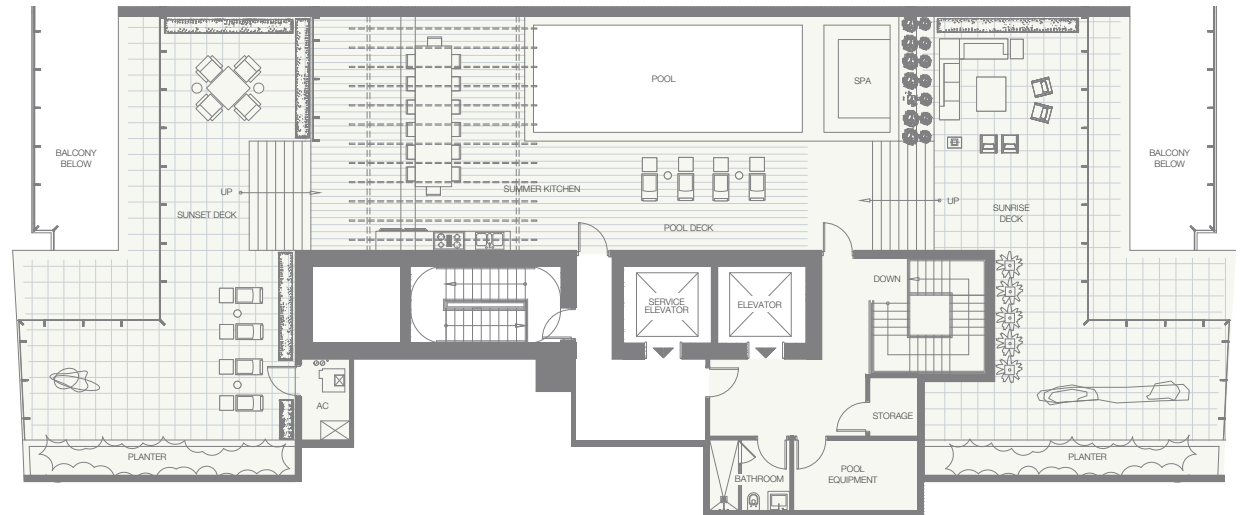
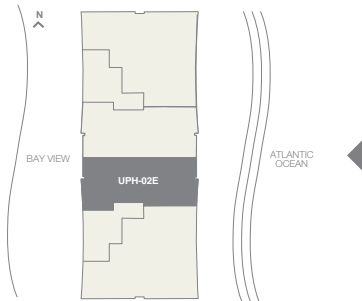
UPH02E

28th Floor - Terrace

RESIDENCE	6,145 sq. ft. 570 sq. mt.
TERRACE	4,957 sq. ft. 460 sq. mt.
Total	11,102 sq. ft. 1,030 sq. mt.



EAST VIEW



Stated dimensions are measured to the exterior boundaries of the exterior walls and the centerline of interior demising walls and in fact vary from the dimensions that would be determined by using the description and definition of the "Unit" set forth in the Declaration (which generally only includes the interior airspace between the perimeter walls and excludes interior structural components). For the square footage of the "Unit" calculated in the manner set forth in the Declaration, see Exhibit "3" to the Declaration. Additionally, measurements of rooms set forth on any floor plan are generally taken at the greatest points of each given room (as if the room were a perfect rectangle), without regard for any cutouts. Accordingly, the area of the actual room will typically be smaller than the product obtained by multiplying the stated length times width. All dimensions are approximate, and all floor plans and development plans are subject to change.