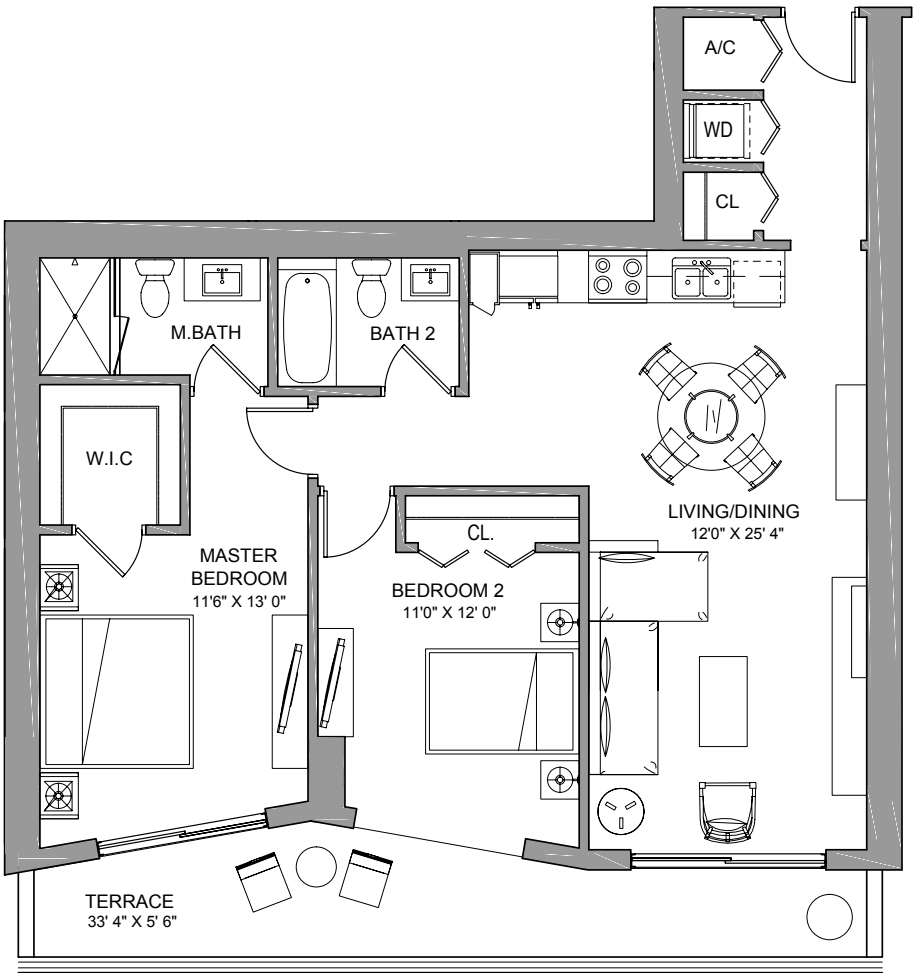
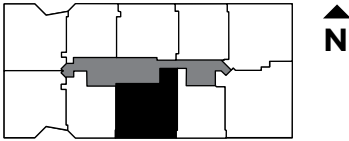


# BRICKELLTEN


## RESIDENCE ONE 2 BEDROOMS / 2 BATH

INTERIOR..... 1,064 sq ft 99 m<sup>2</sup>  
 TERRACE..... 186 sq ft 17 m<sup>2</sup>

**TOTAL 1,250 sq ft 116 m<sup>2</sup>**



SALES AND MARKETING BY  
**ONEWORLD**  
 PROPERTIES

 These drawings are conceptual only and are for the convenience of reference. They should not be relied upon as representations, express or implied, of the final detail of the residences. Units shown are examples of unit types and may not depict actual units. Stated square footages are ranges for a particular unit type and are measured to the exterior boundaries of the exterior walls and the centerline of interior demising walls and in fact vary from the area that would be determined by using the description and definition of the "Unit" set forth in the Declaration (which generally only includes the interior airspace between the perimeter walls and excludes interior structural components).

# BRICKELLTEN

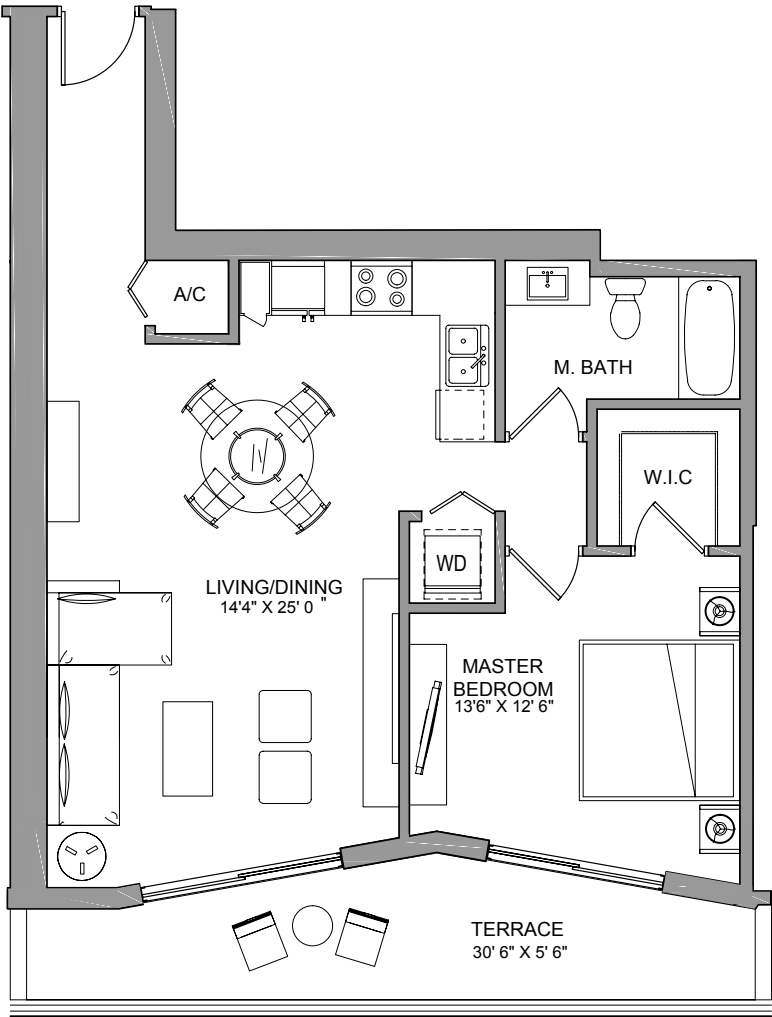
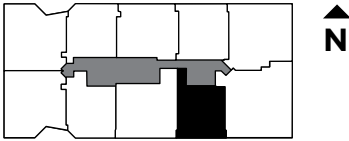
## RESIDENCE TWO

1 BEDROOM / 1 BATH


INTERIOR.....	815 sq ft	76 m <sup>2</sup>
TERRACE.....	165 sq ft	15 m <sup>2</sup>

---

<b>TOTAL</b>	<b>980 sq ft</b>	<b>91 m<sup>2</sup></b>
--------------	------------------	-------------------------



SALES AND MARKETING BY  
**ONEWORLD**  
 PROPERTIES

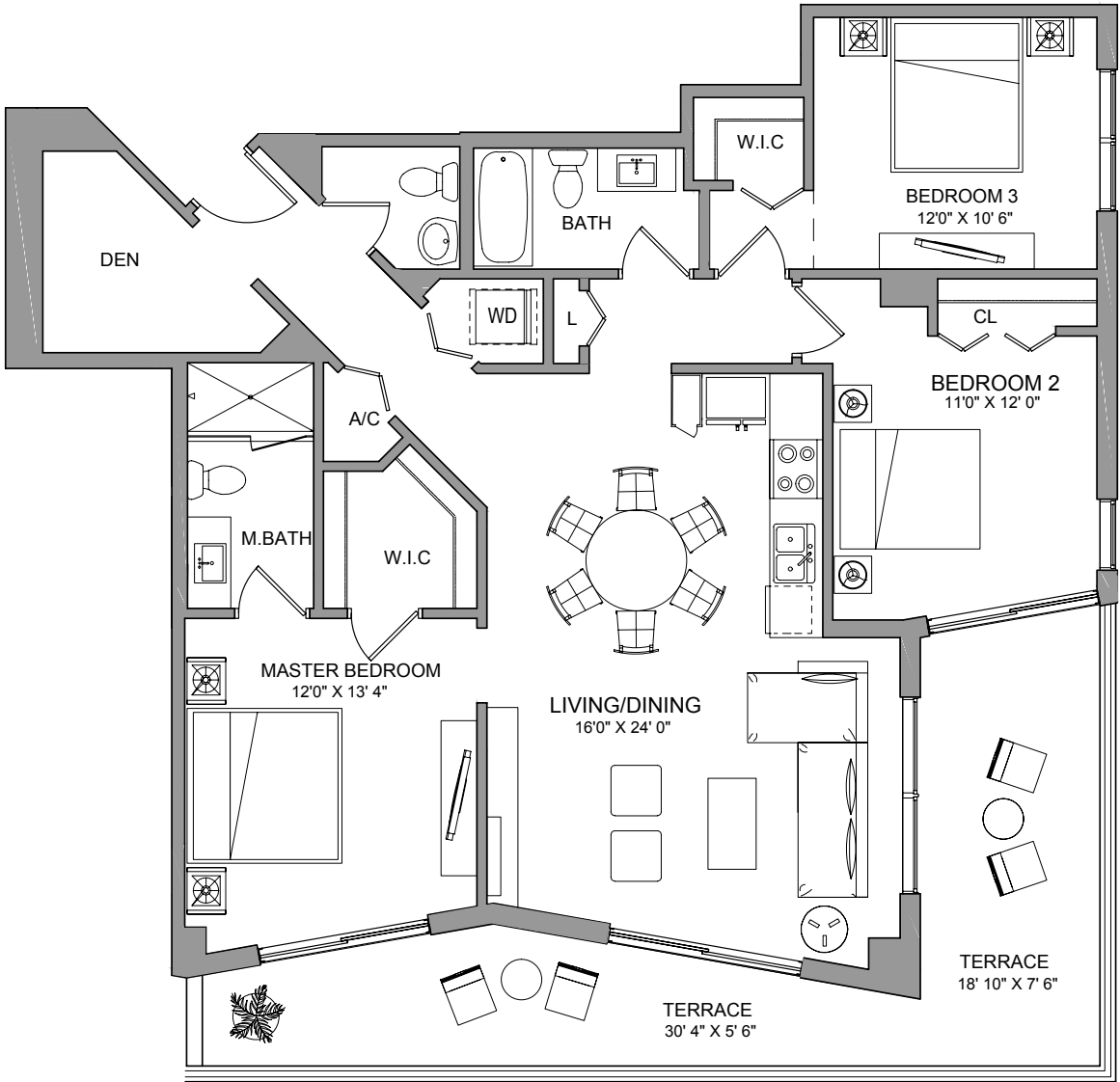
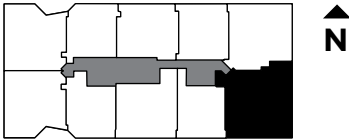
 These drawings are conceptual only and are for the convenience of reference. They should not be relied upon as representations, express or implied, of the final detail of the residences. Units shown are examples of unit types and may not depict actual units. Stated square footages are ranges for a particular unit type and are measured to the exterior boundaries of the exterior walls and the centerline of interior demising walls and in fact vary from the area that would be determined by using the description and definition of the "Unit" set forth in the Declaration (which generally only includes the interior airspace between the perimeter walls and excludes interior structural components).

# BRICKELLTEN

## RESIDENCE THREE

3 BEDROOMS + DEN / 2 1/2 BATH

INTERIOR.....	1,387 sq ft	129 m <sup>2</sup>
TERRACE.....	328 sq ft	31 m <sup>2</sup>
<b>TOTAL</b>	<b>1,715 sq ft</b>	<b>160 m<sup>2</sup></b>



SALES AND MARKETING BY  
**ONEWORLD**  
 PROPERTIES

These drawings are conceptual only and are for the convenience of reference. They should not be relied upon as representations, express or implied, of the final detail of the residences. Units shown are examples of unit types and may not depict actual units. Stated square footages are ranges for a particular unit type and are measured to the exterior boundaries of the exterior walls and the centerline of interior demising walls and in fact vary from the area that would be determined by using the description and definition of the "Unit" set forth in the Declaration (which generally only includes the interior airspace between the perimeter walls and excludes interior structural components).

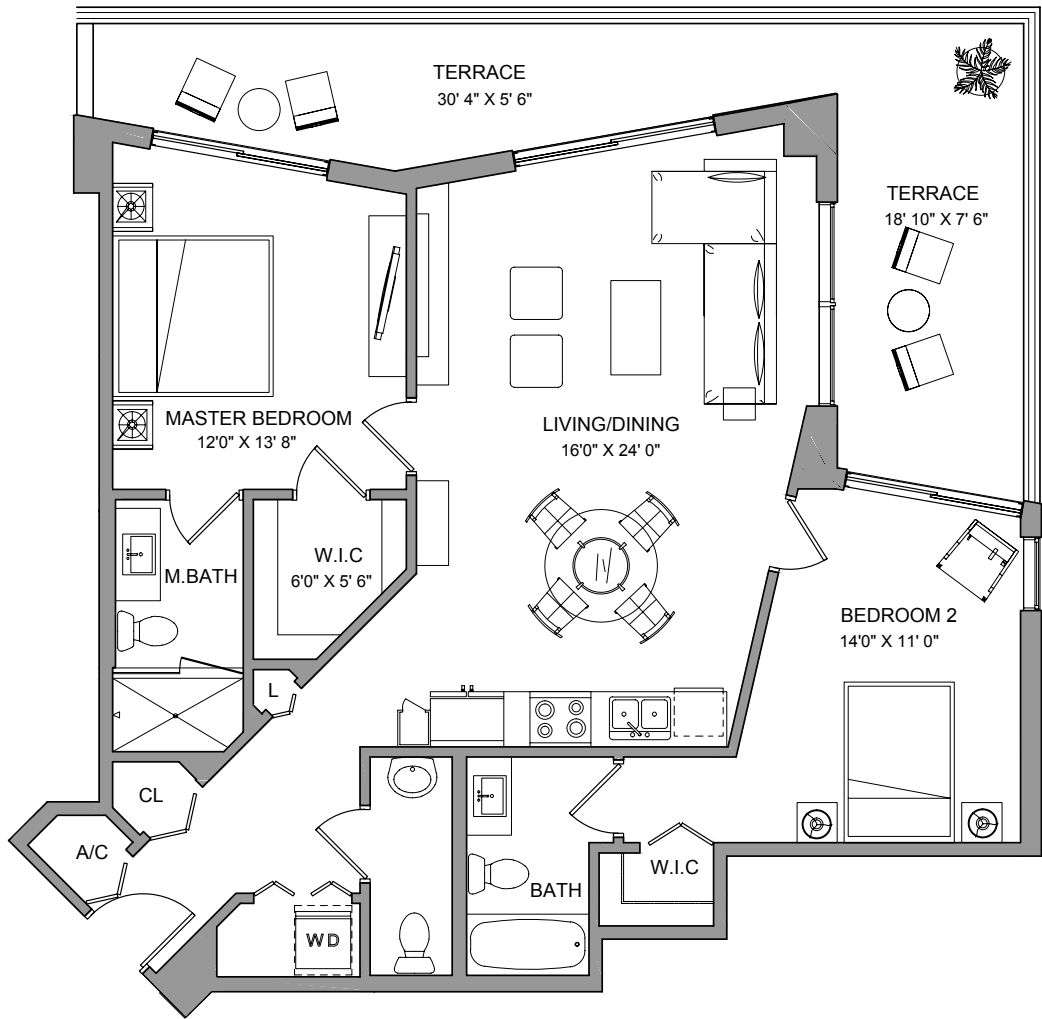
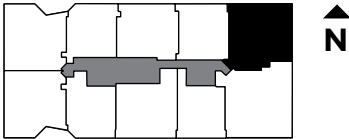
# BRICKELLTEN

## RESIDENCE FOUR


2 BEDROOMS / 2 1/2 BATH

INTERIOR.....	1,124 sq ft	105 m <sup>2</sup>
TERRACE.....	328 sq ft	31 m <sup>2</sup>

**TOTAL** **1,452 sq ft** **136 m<sup>2</sup>**



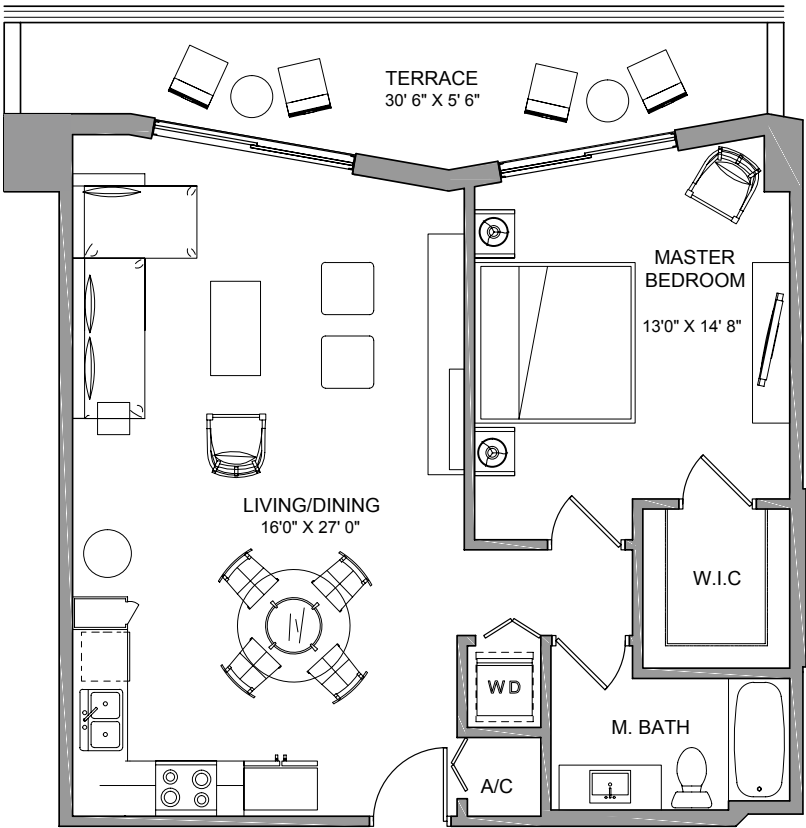
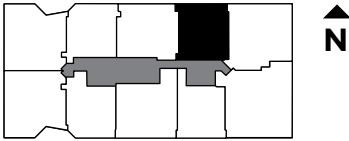
SALES AND MARKETING BY  
**ONEWORLD**  
 PROPERTIES

 These drawings are conceptual only and are for the convenience of reference. They should not be relied upon as representations, express or implied, of the final detail of the residences. Units shown are examples of unit types and may not depict actual units. Stated square footages are ranges for a particular unit type and are measured to the exterior boundaries of the exterior walls and the centerline of interior demising walls and in fact vary from the area that would be determined by using the description and definition of the "Unit" set forth in the Declaration (which generally only includes the interior airspace between the perimeter walls and excludes interior structural components).


# BRICKELLTEN

## RESIDENCE FIVE 1 BEDROOM / 1 BATH

INTERIOR.....	827 sq ft	77 m <sup>2</sup>
TERRACE.....	169 sq ft	16 m <sup>2</sup>
<b>TOTAL</b>	<b>996 sq ft</b>	<b>93 m<sup>2</sup></b>



SALES AND MARKETING BY  
**ONEWORLD**  
PROPERTIES

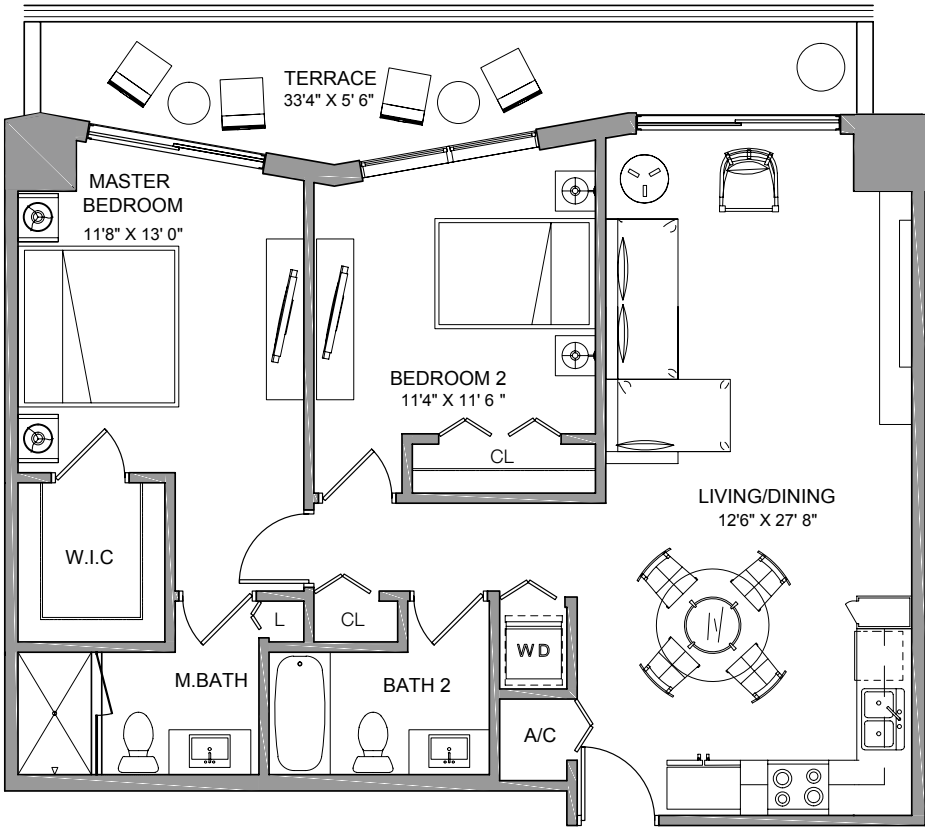
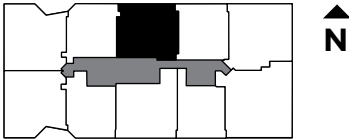
 These drawings are conceptual only and are for the convenience of reference. They should not be relied upon as representations, express or implied, of the final detail of the residences. Units shown are examples of unit types and may not depict actual units. Stated square footages are ranges for a particular unit type and are measured to the exterior boundaries of the exterior walls and the centerline of interior demising walls and in fact vary from the area that would be determined by using the description and definition of the "Unit" set forth in the Declaration (which generally only includes the interior airspace between the perimeter walls and excludes interior structural components).

## RESIDENCE SIX


2 BEDROOMS / 2 BATH

INTERIOR..... 1,009 sq ft 94 m<sup>2</sup>  
 TERRACE..... 177 sq ft 16 m<sup>2</sup>

**TOTAL 1,186 sq ft 110 m<sup>2</sup>**



SALES AND MARKETING BY  
**ONEWORLD**  
 PROPERTIES

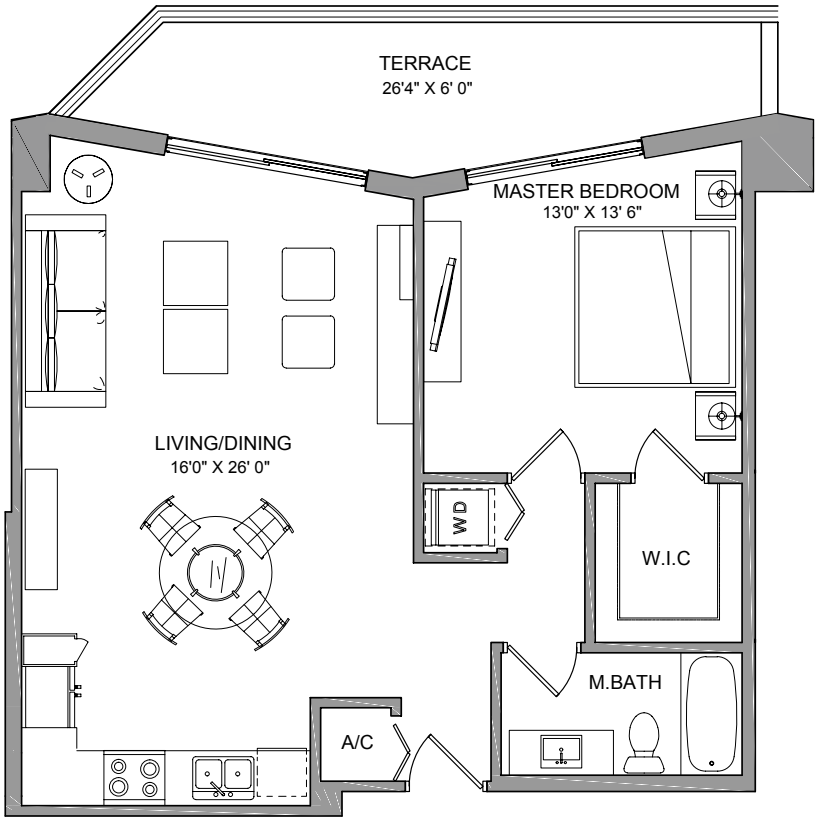
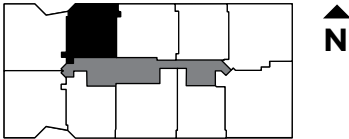
 These drawings are conceptual only and are for the convenience of reference. They should not be relied upon as representations, express or implied, of the final detail of the residences. Units shown are examples of unit types and may not depict actual units. Stated square footages are ranges for a particular unit type and are measured to the exterior boundaries of the exterior walls and the centerline of interior demising walls and in fact vary from the area that would be determined by using the description and definition of the "Unit" set forth in the Declaration (which generally only includes the interior airspace between the perimeter walls and excludes interior structural components).

## RESIDENCE SEVEN


1 BEDROOM / 1 BATH

INTERIOR..... 792 sq ft 74 m<sup>2</sup>  
 TERRACE..... 167 sq ft 16 m<sup>2</sup>

**TOTAL 959 sq ft 90 m<sup>2</sup>**



SALES AND MARKETING BY  
**ONEWORLD**  
 PROPERTIES

 These drawings are conceptual only and are for the convenience of reference. They should not be relied upon as representations, express or implied, of the final detail of the residences. Units shown are examples of unit types and may not depict actual units. Stated square footages are ranges for a particular unit type and are measured to the exterior boundaries of the exterior walls and the centerline of interior demising walls and in fact vary from the area that would be determined by using the description and definition of the "Unit" set forth in the Declaration (which generally only includes the interior airspace between the perimeter walls and excludes interior structural components).

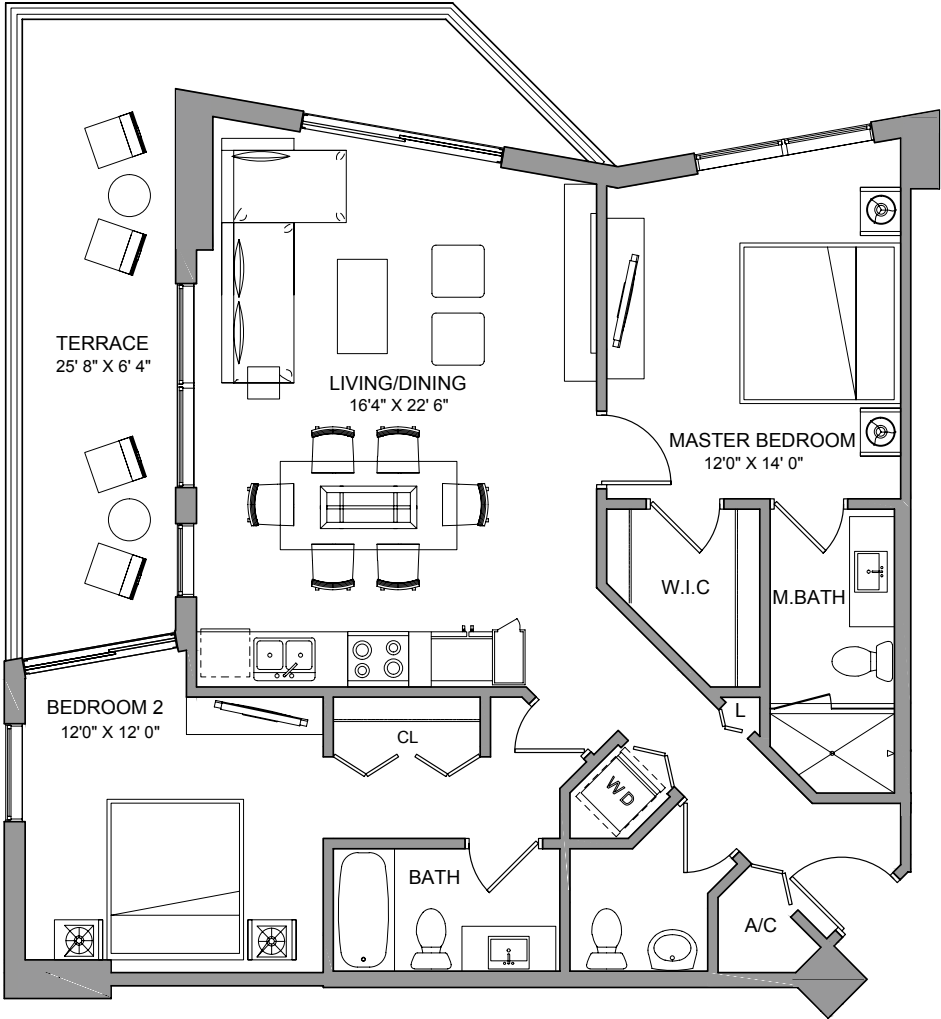
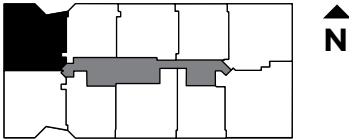
# BRICKELLTEN

## RESIDENCE EIGHT


2 BEDROOMS / 2 1/2 BATH

INTERIOR..... 1,111 sq ft 103 m<sup>2</sup>  
 TERRACE..... 254 sq ft 24 m<sup>2</sup>

**TOTAL 1,365 sq ft 127 m<sup>2</sup>**



SALES AND MARKETING BY  
**ONEWORLD**  
 PROPERTIES

 These drawings are conceptual only and are for the convenience of reference. They should not be relied upon as representations, express or implied, of the final detail of the residences. Units shown are examples of unit types and may not depict actual units. Stated square footages are ranges for a particular unit type and are measured to the exterior boundaries of the exterior walls and the centerline of interior demising walls and in fact vary from the area that would be determined by using the description and definition of the "Unit" set forth in the Declaration (which generally only includes the interior airspace between the perimeter walls and excludes interior structural components).

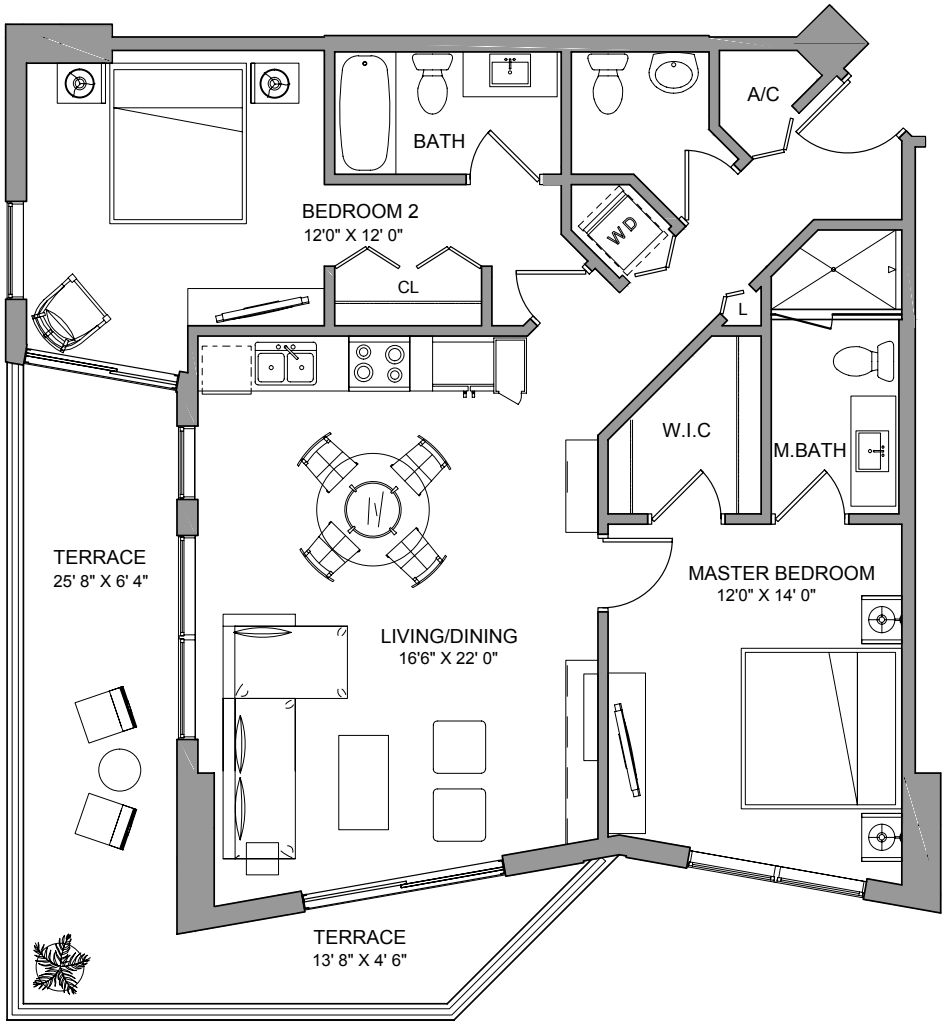
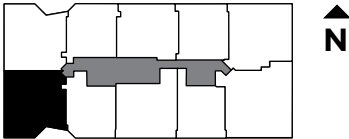


## RESIDENCE NINE


2 BEDROOMS / 2 1/2 BATH

INTERIOR..... 1,116 sq ft 104 m<sup>2</sup>  
 TERRACE..... 254 sq ft 24 m<sup>2</sup>

**TOTAL 1,370 sq ft 128 m<sup>2</sup>**



SALES AND MARKETING BY  
**ONEWORLD**  
 PROPERTIES

 These drawings are conceptual only and are for the convenience of reference. They should not be relied upon as representations, express or implied, of the final detail of the residences. Units shown are examples of unit types and may not depict actual units. Stated square footages are ranges for a particular unit type and are measured to the exterior boundaries of the exterior walls and the centerline of interior demising walls and in fact vary from the area that would be determined by using the description and definition of the "Unit" set forth in the Declaration (which generally only includes the interior airspace between the perimeter walls and excludes interior structural components).

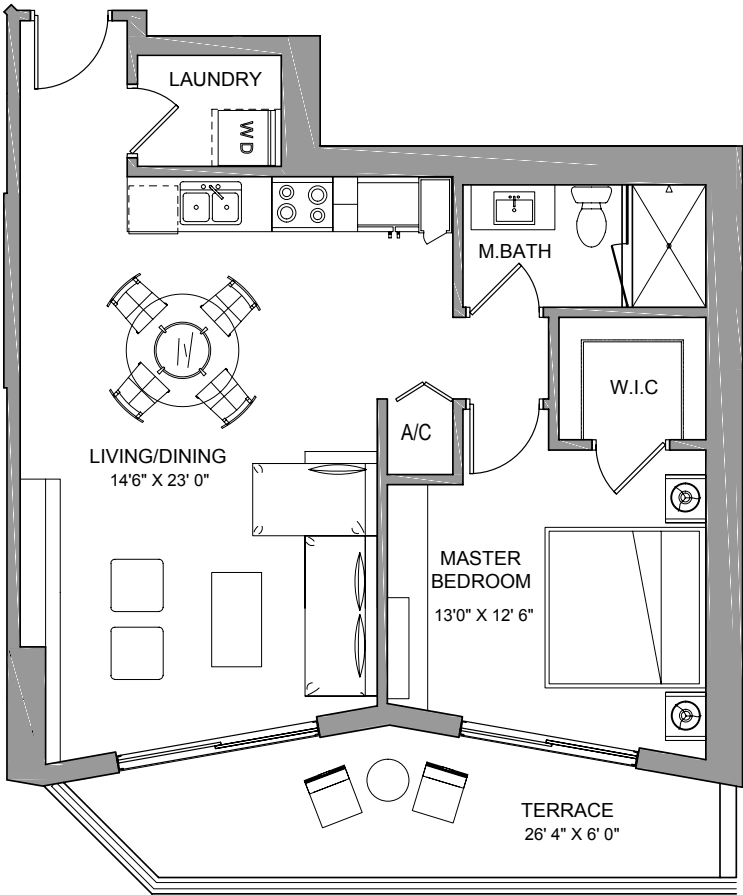
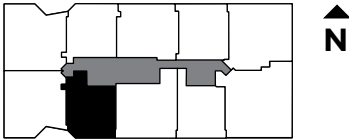
# BRICKELLTEN

## RESIDENCE TEN


1 BEDROOM / 1 BATH

INTERIOR..... 768 sq ft 71 m<sup>2</sup>  
 TERRACE..... 150 sq ft 14 m<sup>2</sup>

**TOTAL 918 sq ft 85 m<sup>2</sup>**



SALES AND MARKETING BY  
**ONEWORLD**  
 PROPERTIES

 These drawings are conceptual only and are for the convenience of reference. They should not be relied upon as representations, express or implied, of the final detail of the residences. Units shown are examples of unit types and may not depict actual units. Stated square footages are ranges for a particular unit type and are measured to the exterior boundaries of the exterior walls and the centerline of interior demising walls and in fact vary from the area that would be determined by using the description and definition of the "Unit" set forth in the Declaration (which generally only includes the interior airspace between the perimeter walls and excludes interior structural components).

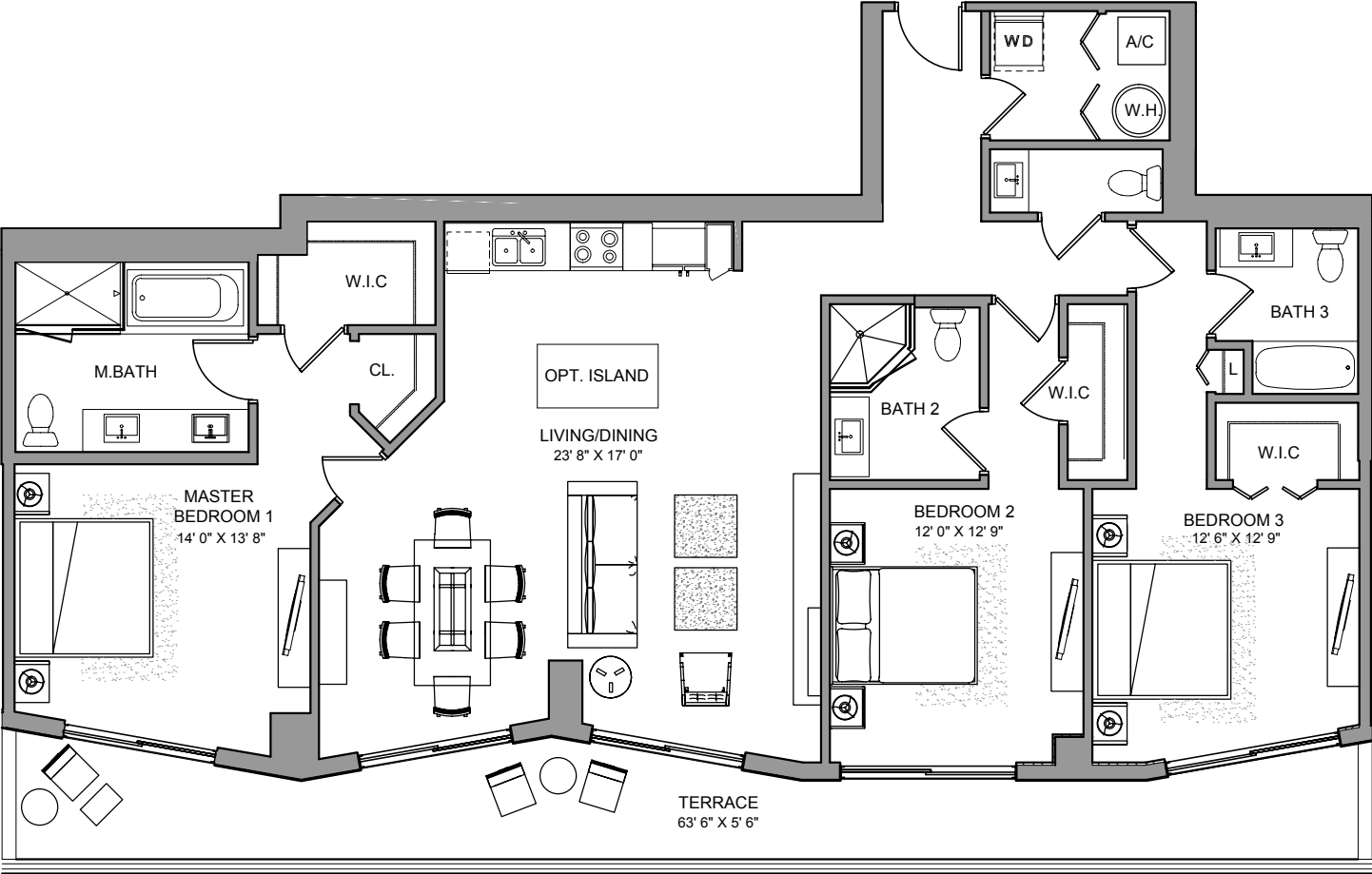
# BRICKELLTEN

## PH & LP ONE


3 BEDROOMS / 3 1/2 BATH

INTERIOR..... 1,812 sq ft 168 m<sup>2</sup>  
 TERRACE..... 337 sq ft 31 m<sup>2</sup>

**TOTAL 2,149 sq ft 199 m<sup>2</sup>**



SALES AND MARKETING BY  
**ONEWORLD**  
 PROPERTIES

 These drawings are conceptual only and are for the convenience of reference. They should not be relied upon as representations, express or implied, of the final detail of the residences. Units shown are examples of unit types and may not depict actual units. Stated square footages are ranges for a particular unit type and are measured to the exterior boundaries of the exterior walls and the centerline of interior demising walls and in fact vary from the area that would be determined by using the description and definition of the "Unit" set forth in the Declaration (which generally only includes the interior airspace between the perimeter walls and excludes interior structural components).

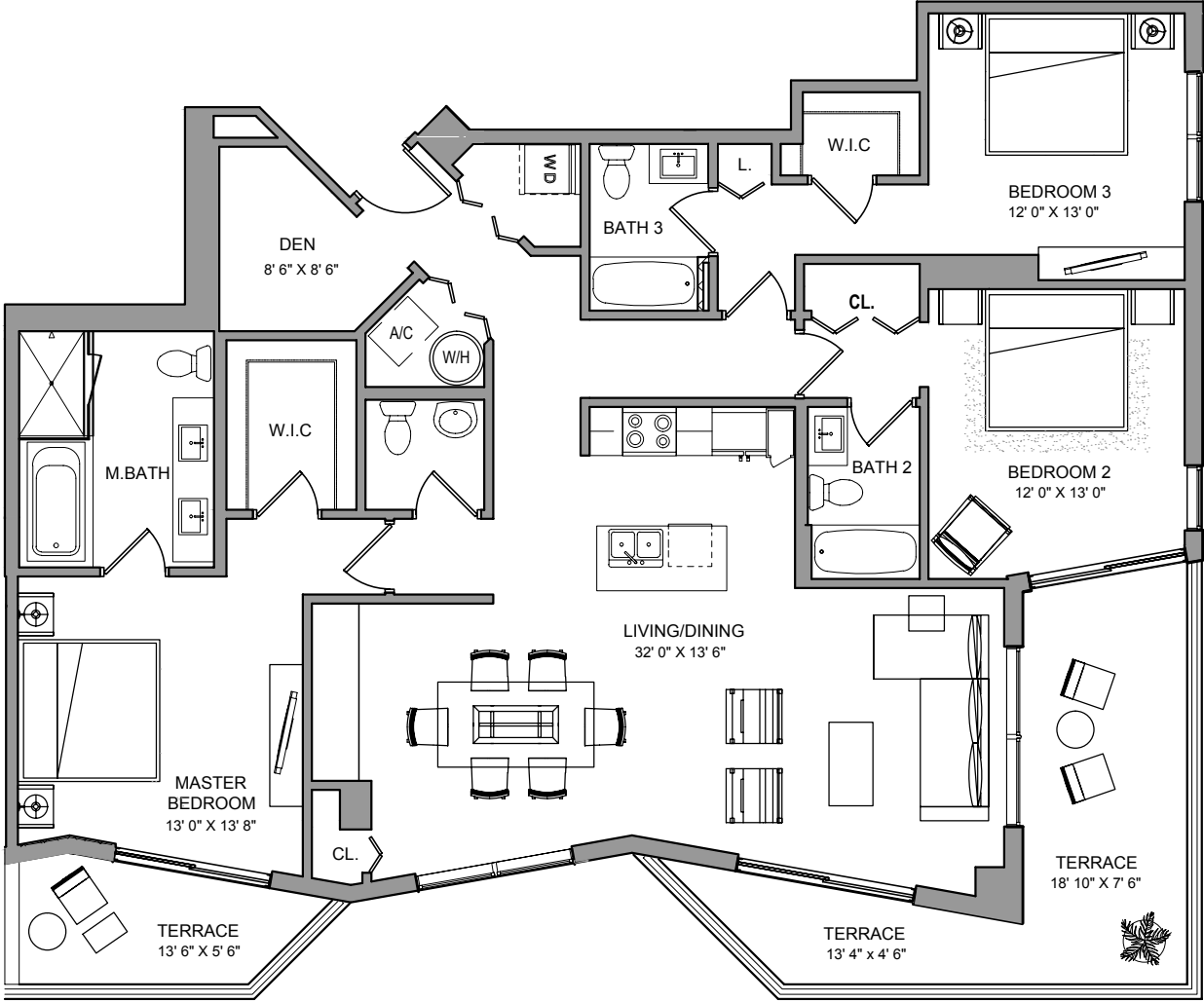
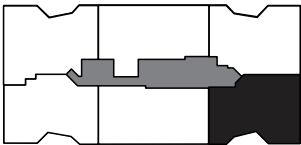
# BRICKELLTEN

## PH & LP TWO


3 BEDROOMS + DEN / 3 1/2 BATH

INTERIOR.....1,783 sq ft 166 m<sup>2</sup>  
 TERRACE..... 314 sq ft 29 m<sup>2</sup>

**TOTAL 2,097 sq ft 195 m<sup>2</sup>**



SALES AND MARKETING BY  
**ONEWORLD**  
 PROPERTIES

 These drawings are conceptual only and are for the convenience of reference. They should not be relied upon as representations, express or implied, of the final detail of the residences. Units shown are examples of unit types and may not depict actual units. Stated square footages are ranges for a particular unit type and are measured to the exterior boundaries of the exterior walls and the centerline of interior demising walls and in fact vary from the area that would be determined by using the description and definition of the "Unit" set forth in the Declaration (which generally only includes the interior airspace between the perimeter walls and excludes interior structural components).

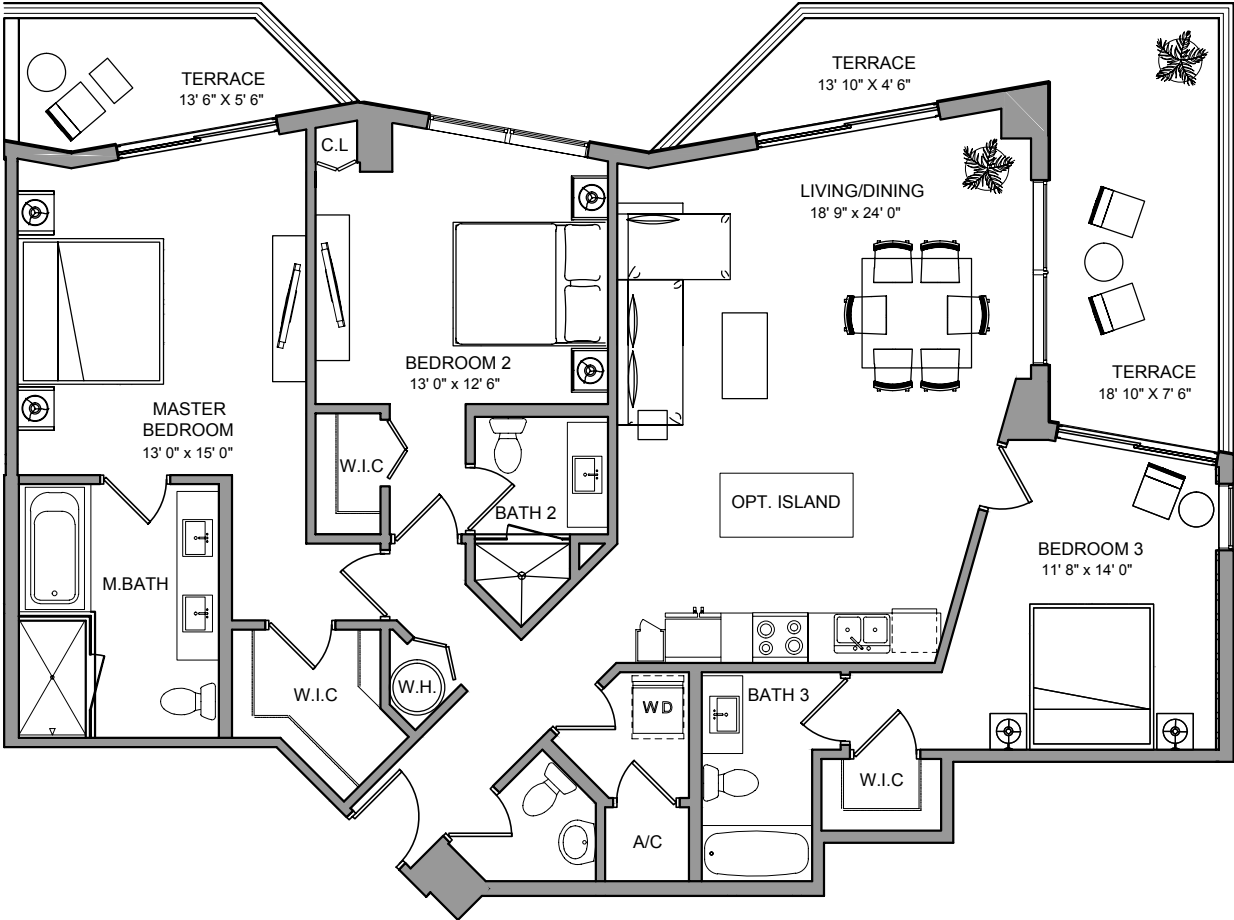
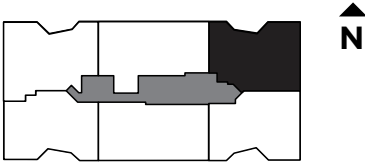
# BRICKELLTEN

## PH & LP THREE


3 BEDROOMS / 3 1/2 BATH

INTERIOR.....1,582 sq ft 147 m<sup>2</sup>  
 TERRACE..... 313 sq ft 29 m<sup>2</sup>

**TOTAL 1,895 sq ft 176 m<sup>2</sup>**



SALES AND MARKETING BY  
**ONEWORLD**  
 PROPERTIES

 These drawings are conceptual only and are for the convenience of reference. They should not be relied upon as representations, express or implied, of the final detail of the residences. Units shown are examples of unit types and may not depict actual units. Stated square footages are ranges for a particular unit type and are measured to the exterior boundaries of the exterior walls and the centerline of interior demising walls and in fact vary from the area that would be determined by using the description and definition of the "Unit" set forth in the Declaration (which generally only includes the interior airspace between the perimeter walls and excludes interior structural components).

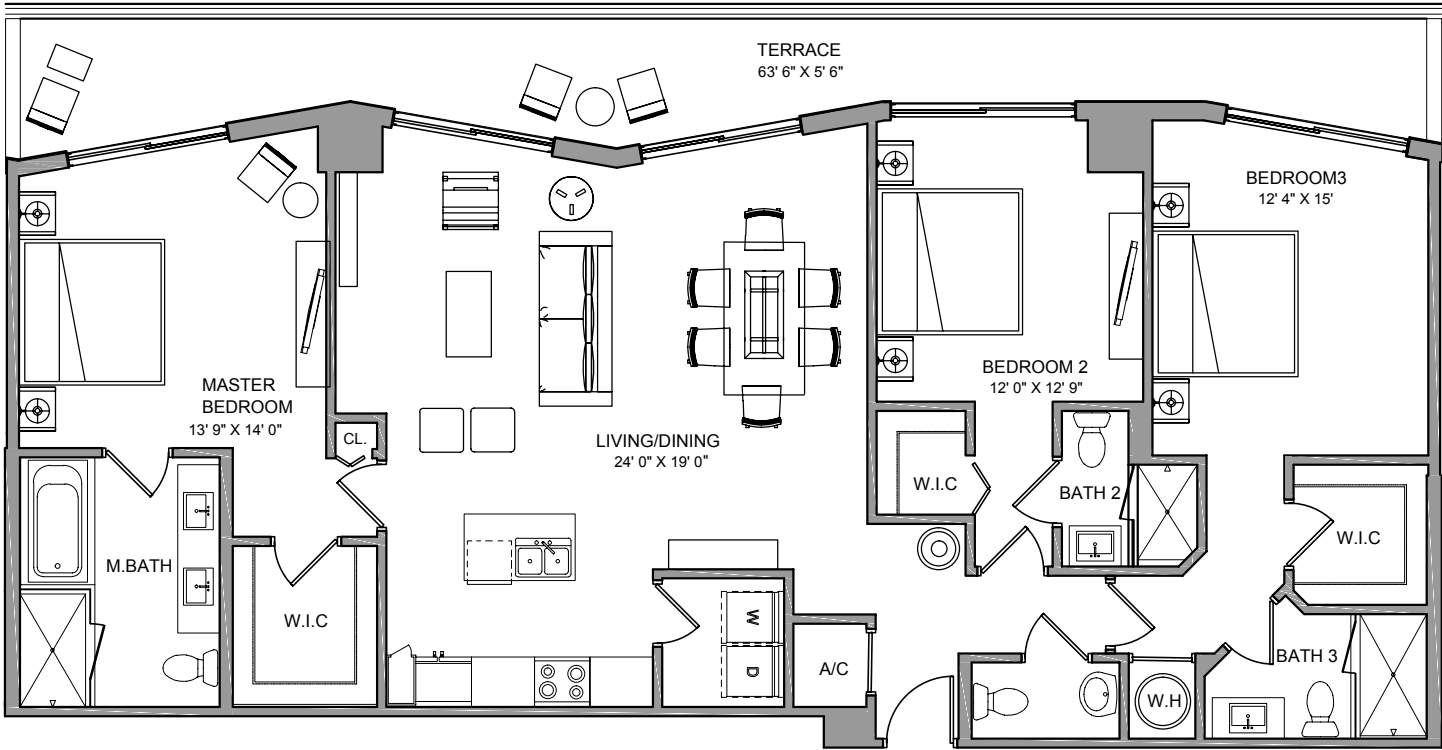
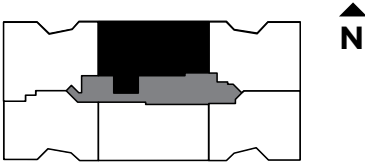
# BRICKELLTEN

## PH & LP FOUR


3 BEDROOMS / 3 1/2 BATH

INTERIOR.....1,736 sq ft 161 m<sup>2</sup>  
 TERRACE.....340 sq ft 32 m<sup>2</sup>

**TOTAL 2,076 sq ft 193 m<sup>2</sup>**



SALES AND MARKETING BY  
**ONEWORLD**  
 PROPERTIES

 These drawings are conceptual only and are for the convenience of reference. They should not be relied upon as representations, express or implied, of the final detail of the residences. Units shown are examples of unit types and may not depict actual units. Stated square footages are ranges for a particular unit type and are measured to the exterior boundaries of the exterior walls and the centerline of interior demising walls and in fact vary from the area that would be determined by using the description and definition of the "Unit" set forth in the Declaration (which generally only includes the interior airspace between the perimeter walls and excludes interior structural components).

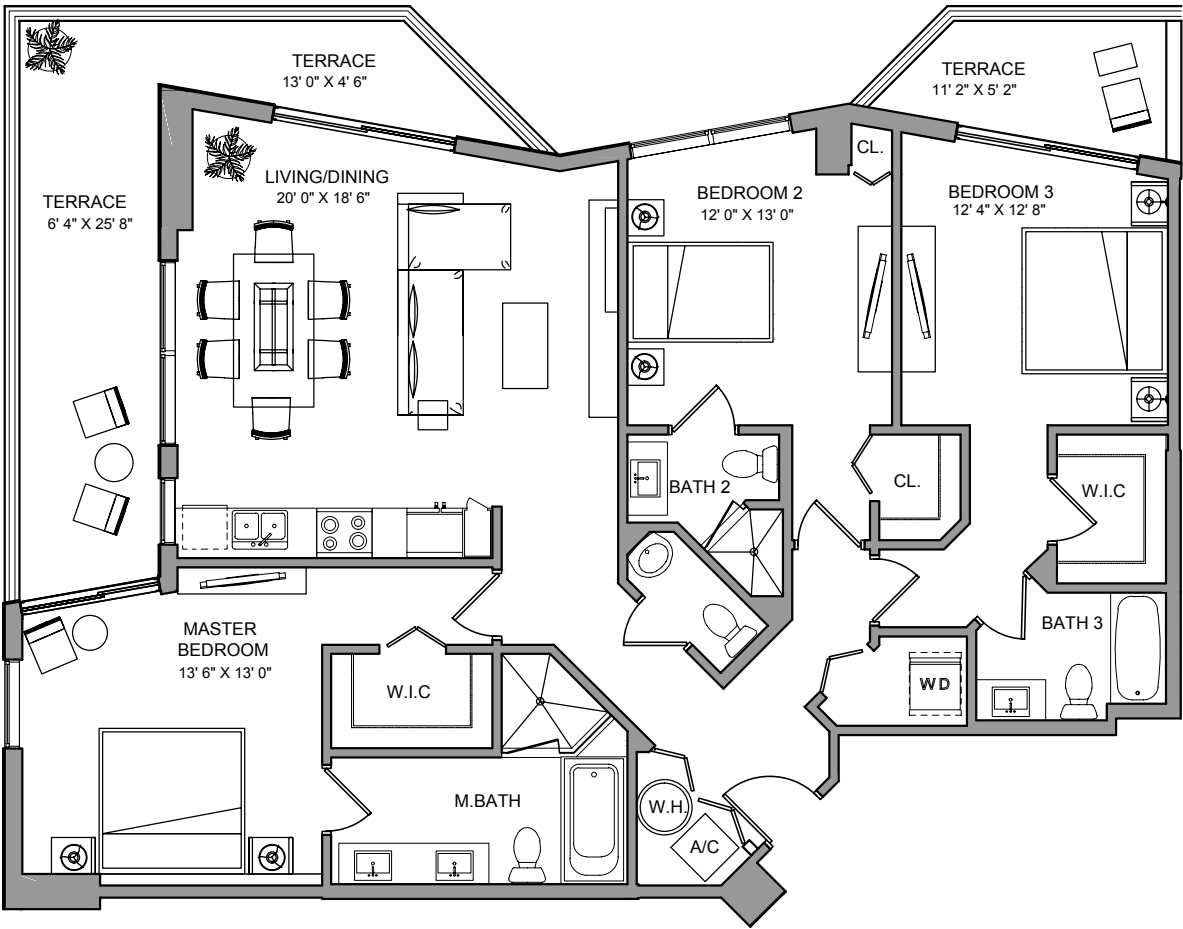
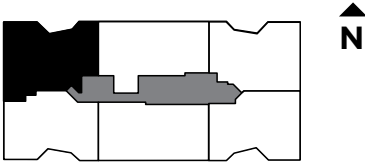
# BRICKELLTEN

## PH & LP FIVE


3 BEDROOMS / 3 1/2 BATH

INTERIOR.....1,538 sq ft 143 m<sup>2</sup>  
 TERRACE..... 328 sq ft 30 m<sup>2</sup>

**TOTAL 1,866 sq ft 173 m<sup>2</sup>**



SALES AND MARKETING BY  
**ONEWORLD**  
 PROPERTIES

 These drawings are conceptual only and are for the convenience of reference. They should not be relied upon as representations, express or implied, of the final detail of the residences. Units shown are examples of unit types and may not depict actual units. Stated square footages are ranges for a particular unit type and are measured to the exterior boundaries of the exterior walls and the centerline of interior demising walls and in fact vary from the area that would be determined by using the description and definition of the "Unit" set forth in the Declaration (which generally only includes the interior airspace between the perimeter walls and excludes interior structural components).

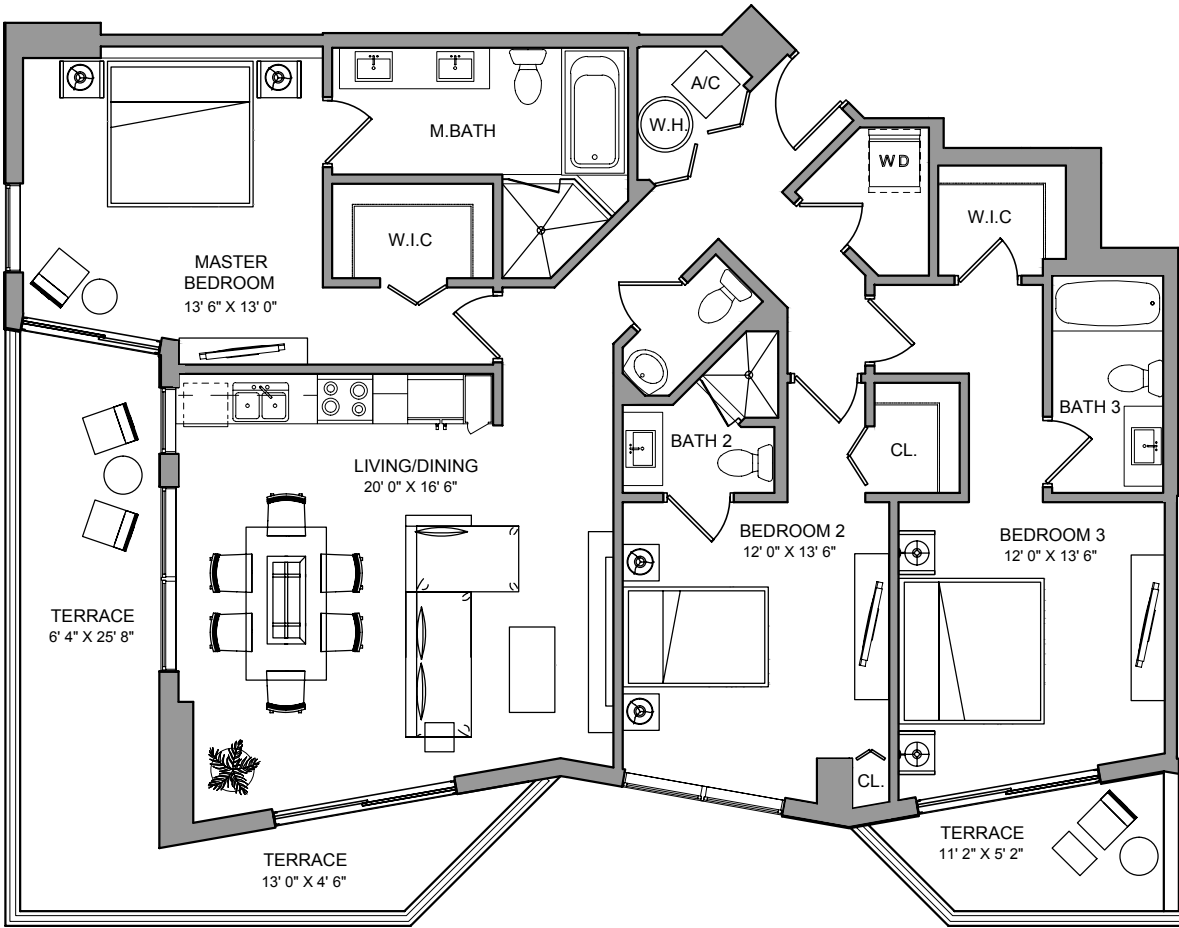
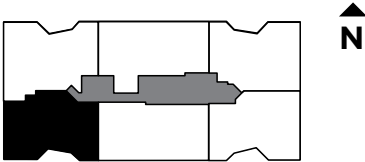
# BRICKELLTEN

## PH & LP SIX


3 BEDROOMS / 3 1/2 BATH

INTERIOR.....1,565 sq ft 145 m<sup>2</sup>  
 TERRACE..... 327 sq ft 30 m<sup>2</sup>

**TOTAL 1,892 sq ft 175 m<sup>2</sup>**



SALES AND MARKETING BY  
**ONEWORLD**  
 PROPERTIES

 These drawings are conceptual only and are for the convenience of reference. They should not be relied upon as representations, express or implied, of the final detail of the residences. Units shown are examples of unit types and may not depict actual units. Stated square footages are ranges for a particular unit type and are measured to the exterior boundaries of the exterior walls and the centerline of interior demising walls and in fact vary from the area that would be determined by using the description and definition of the "Unit" set forth in the Declaration (which generally only includes the interior airspace between the perimeter walls and excludes interior structural components).