

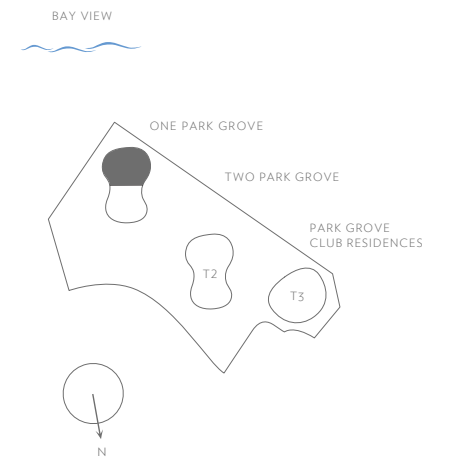
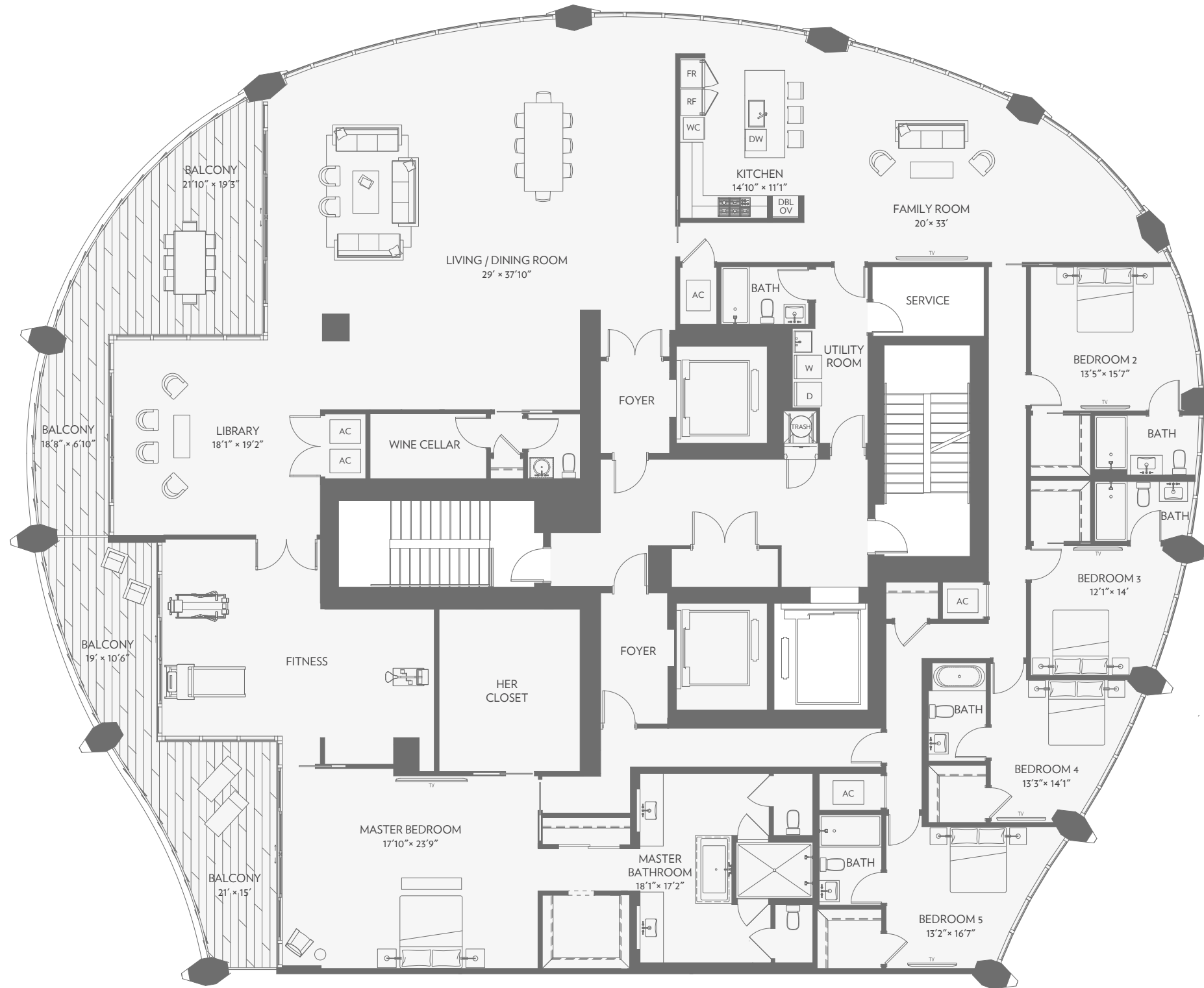
one
park
grove

COMBINATION UNITS

one park grove

biscayne bay

coconut grove



RESIDENCE A/B COMBINATION

FLOORS 4-20

7,317 SQ FT / 680 SQ M TOTAL

- 5 BEDROOMS
- 6 BATHROOMS
- 1 POWDER ROOM

6,476 SQ FT / 602 SQ M INTERIOR

841 SQ FT / 78 SQ M EXTERIOR

- 12 foot floor-to-ceiling glass overlooking Biscayne Bay
- Private oversized waterfront terraces
- Expansive dining and entertaining area
- Private master bedroom with walk-in closets
- Double size shower in master bedroom
- His & Her water closets
- His & Her vanities
- Bedrooms with ensuite bathrooms
- Kitchens and baths designed by William Sofield
- Eat-in chef's kitchen with Island, Wolf and SubZero appliances
- Staff Room with en suite bath



Stated square footages and dimensions are measured to the exterior boundaries of the exterior walls and the centerline of interior demising walls and in fact vary from the square footage and dimensions that would be determined by using the description and definition of the "Unit" set forth in the Declaration (which generally only includes the interior airspace between the perimeter walls and excludes all interior structural components and other common elements). This method is generally used in sales materials and is provided to allow a prospective buyer to compare the Units with units in other condominium projects that utilize the same method. Measurements of rooms set forth on this floor plan are generally taken at the farthest points of each given room (as if the room were a perfect rectangle), without regard for any cutouts or variations. Accordingly, the area of the actual room will typically be smaller than the product obtained by multiplying the stated length and width. All dimensions are estimates which will vary with actual construction, and all floor plans, specifications and other development plans are subject to change and will not necessarily accurately reflect the final plans and specifications for the development. See Disclaimers Page.



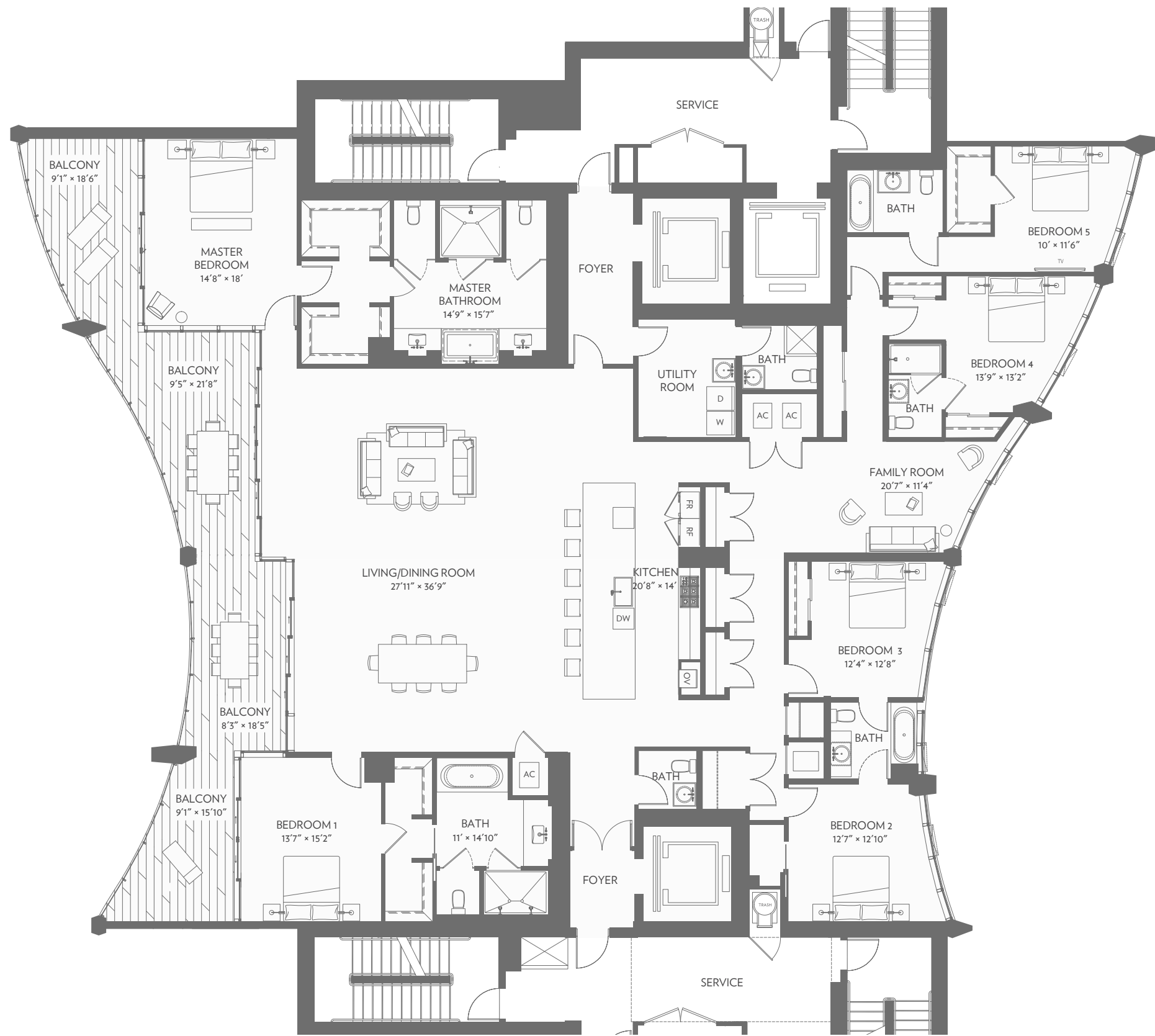
PARK GROVE

OMA • REM KOOLHAAS • COCONUT GROVE MIAMI

one park grove

biscayne bay

coconut grove



RESIDENCE B/C COMBINATION

FLOORS 4-20

5,212 SQ FT / 484 SQ M TOTAL

- 6 BEDROOMS
- 6 BATHROOMS
- 1 POWDER ROOM

4,497 SQ FT / 418 SQ M INTERIOR
715 SQ FT / 66 SQ M EXTERIOR

- 12 foot floor-to-ceiling glass overlooking Biscayne Bay
- Private oversized waterfront terraces
- Expansive dining and entertaining area
- Private master bedroom with walk-in closets
- Double size shower in master bedroom
- His & Her water closets
- His & Her vanities
- Bedrooms with ensuite bathrooms
- Kitchens and baths designed by William Sofield
- Eat-in chef's kitchen with Island, Wolf and SubZero appliances
- Staff Room with en suite bath

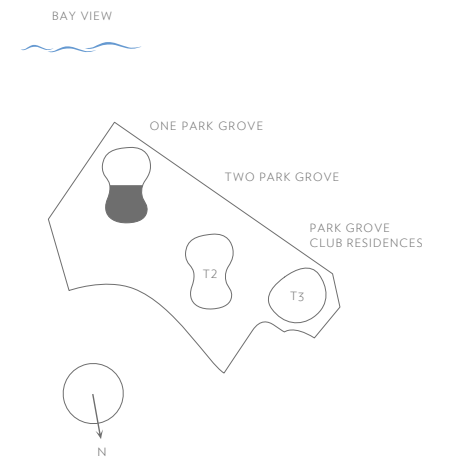
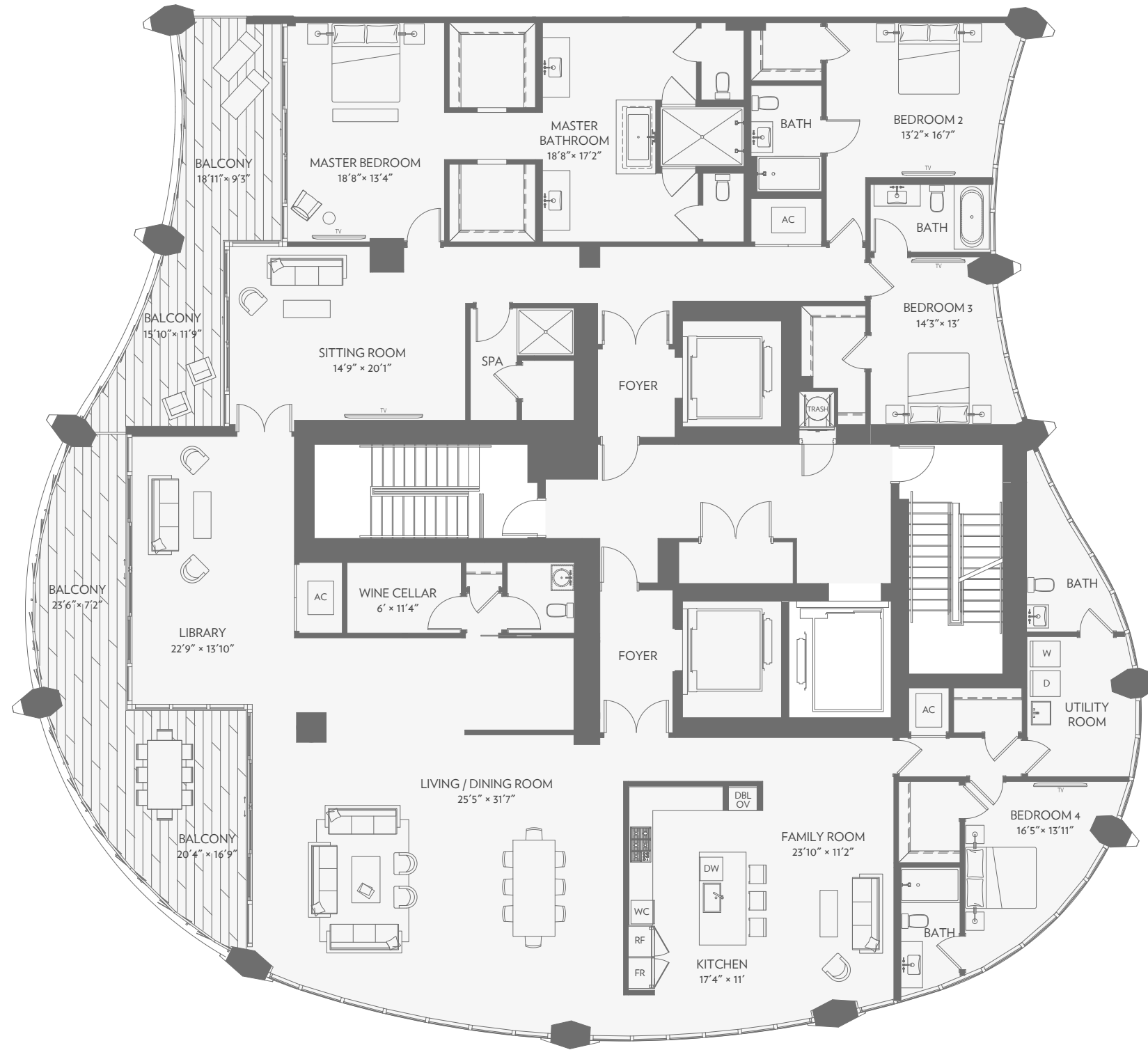
Stated square footages and dimensions are measured to the exterior boundaries of the exterior walls and the centerline of interior demising walls and in fact vary from the square footage and dimensions that would be determined by using the description and definition of the "Unit" set forth in the Declaration (which generally only includes the interior airspace between the perimeter walls and excludes all interior structural components and other common elements). This method is generally used in sales materials and is provided to allow a prospective buyer to compare the Units with units in other condominium projects that utilize the same method. Measurements of rooms set forth on this floor plan are generally taken at the farthest points of each given room (as if the room were a perfect rectangle), without regard for any cutouts or variations. Accordingly, the area of the actual room will typically be smaller than the product obtained by multiplying the stated length and width. All dimensions are estimates which will vary with actual construction, and all floor plans, specifications and other development plans are subject to change and will not necessarily accurately reflect the final plans and specifications for the development. See Disclaimers Page.



PARK GROVE
OMA · REM KOOLHAAS · COCONUT GROVE MIAMI

one park grove

biscayne bay



coconut grove



RESIDENCE C/D COMBINATION

FLOORS 4-20

5,902 SQ FT / 548 SQ M TOTAL

- 4 BEDROOMS
- 5 BATHROOMS
- 1 POWDER ROOM

5,149 SQ FT / 478 SQ M INTERIOR
753 SQ FT / 70 SQ M EXTERIOR

- 12 foot floor-to-ceiling glass overlooking Biscayne Bay
- Private oversized waterfront terraces
- Expansive dining and entertaining area
- Private master bedroom with walk-in closets
- Double size shower in master bedroom
- His & Her water closets
- His & Her vanities
- Bedrooms with ensuite bathrooms
- Kitchens and baths designed by William Sofield
- Eat-in chef's kitchen with Island, Wolf and SubZero appliances
- Staff Room with en suite bath

Stated square footages and dimensions are measured to the exterior boundaries of the exterior walls and the centerline of interior demising walls and in fact vary from the square footage and dimensions that would be determined by using the description and definition of the "Unit" set forth in the Declaration (which generally only includes the interior airspace between the perimeter walls and excludes all interior structural components and other common elements). This method is generally used in sales materials and is provided to allow a prospective buyer to compare the Units with units in other condominium projects that utilize the same method. Measurements of rooms set forth on this floor plan are generally taken at the farthest points of each given room (as if the room were a perfect rectangle), without regard for any cutouts or variations. Accordingly, the area of the actual room will typically be smaller than the product obtained by multiplying the stated length and width. All dimensions are estimates which will vary with actual construction, and all floor plans, specifications and other development plans are subject to change and will not necessarily accurately reflect the final plans and specifications for the development. See Disclaimers Page.



Designed by a world-class team of leading architects, designers, and developers, One Park Grove marries inventive modern design with Coconut Grove's rich cultural legacy, creating an ambiance that is as luxurious as it is relaxed. From its residences to its amenities, One Park Grove offers the ultimate in serene bayfront living.

Architecture by OMA • Rem Koolhaas
Interiors by Meyer Davis
Kitchens & Baths by William Sofield
Landscapes by Enzo Enea
Sculpture by Jaume Plensa
Lifestyle Amenities by Colin Cowie
Signature Restaurant by Chef Michael Schwartz
2701 South Bayshore Drive, 7th Floor
Miami, Florida 33133

 **Terra**  **RELATED**

Exclusive Marketing and Sales Agent
Douglas Elliman Development Marketing

[Disclaimers Page](#)

This condominium is being developed by 2701 Bayshore One Park Grove, LLC, a Florida limited liability company ("Developer"), which has a limited right to use the trademarked names and logos of Terra and Related. Any and all statements, disclosures and/or representations shall be deemed made by Developer and not by Terra and Related and you agree to look solely to Developer (and not to Terra and Related and/or each of their affiliates) with respect to any and all matters relating to the marketing and/or development of the Condominium and with respect to the sales of units in the Condominium.

ORAL REPRESENTATIONS CANNOT BE RELIED UPON AS CORRECTLY STATING THE REPRESENTATIONS OF THE DEVELOPER. FOR CORRECT REPRESENTATIONS, MAKE REFERENCE TO THIS BROCHURE AND TO THE DOCUMENTS REQUIRED BY SECTION 718.503, FLORIDA STATUTES, TO BE FURNISHED BY A DEVELOPER TO A BUYER OR LESSEE. These materials are not intended to be an offer to sell, or solicitation to buy a unit in the condominium. Such an offering shall only be made pursuant to the prospectus (offering circular) for the condominium and no statements should be relied upon unless made in the prospectus or in the applicable purchase agreement. In no event shall any solicitation, offer or sale of a unit in the condominium be made in, or to residents of, any state or country in which such activity would be unlawful.

Certain items, if included, such as tile, marble, stone, granite, cabinets, wood, stain, grout, wall and ceiling textures, mica and carpeting, are subject to size and color variations, grain and quality variations, and may vary in accordance with price, availability and changes by manufacturer from those shown in the illustrations. If circumstances arise which, in Developer's opinion, warrant changes of suppliers, manufacturers, brand names, models or items, or if Developer elects to omit certain items, Developer may modify the list of standard features or make substitutions for equipment, material, appliances, brands, models, etc., with items which in Developer's opinion are of equal or better quality (regardless of cost). All depictions of furniture, appliances, counters, soffits, floor coverings and other matters of detail, including, without limitation, items of finish and decoration, are conceptual only and are not necessarily included. Furnishings are only included if and to the extent provided in your purchase agreement.

The sketches, renderings, graphics, materials, plans, specifications, terms, conditions and statements contained in this brochure are proposed only, and the Developer reserves the right to modify, revise or withdraw any or all of the same in its sole discretion and without prior notice. All improvements, designs and construction are subject to first obtaining the appropriate federal, state and local permits and approvals for same. These drawings and depictions are conceptual only and are for the convenience of reference. They should not be relied upon as representations, express or implied, of the final detail of the residences. The Developer expressly reserved the right to make modifications, revisions and changes it deemed desirable in its sole and absolute discretion.

Additional rates for amenities may apply. Only those amenities set forth in the prospectus (offering circular) will be provided by developer without additional cost.

The project graphics, renderings and text provided herein are copyrighted works owned by the Developer. All rights reserved. Unauthorized reproduction, display or other dissemination of such materials is strictly prohibited and constitutes copyright infringement. No real estate broker is authorized to make any representations or other statements regarding the projects, and no agreements with, deposits paid to or other arrangements made with any real estate broker are or shall be binding on the Developer.

All images and designs depicted herein are artist's conceptual renderings, which are based upon preliminary development plans, and are subject to change without notice in the manner provided in the offering documents. All such materials are not to scale and are shown solely for illustrative purposes. Renderings depict proposed views, which are not identical from each residence. No guarantees or representations whatsoever are made that existing or future views of the project and surrounding areas depicted by artist's conceptual renderings or otherwise described herein, will be provided or, if provided, will be as depicted or described herein. All prices, plans, specifications, features, amenities and other descriptions depicted herein are based upon preliminary development plans, and are subject to change without notice. No guarantees or representations whatsoever are made that any plans, features, amenities or facilities will be provided or, if provided, will be of the same type, size, location or nature as depicted or described herein. The sketches, renderings, graphics materials, plans, specifications, terms, conditions and statements contained in this brochure are proposed only, and the Developer reserves the right to modify, revise or withdraw any or all of the same in its sole discretion and without prior notice. All improvements, designs and construction are subject to first obtaining the appropriate federal, state and local permits and approvals for same. These drawings and depictions are conceptual only and are for the convenience of reference. They should not be relied upon as representations, express or implied, of the final detail of the units. The Developer expressly reserves the right to make modifications, revisions and changes it deemed desirable in its sole and absolute discretion. All depictions of furniture, appliances, counters, soffits, floor coverings and other matters of detail, including, without limitation, items of finish and decoration, are conceptual only and are not necessarily included in each residence. Furnishings are only included if and to the extent provided in your purchase agreement.