



# ONE PARK GROVE

OMA · REM KOOLHAAS

*Coconut Grove, Miami*

KEY PLAN & FLOOR PLAN



# ONE PARK GROVE

OMA · REM KOOLHAAS

*Coconut Grove, Miami*

BAYFRONT RESIDENCES  
COCONUT GROVE



 Terra  RELATED

EXCLUSIVE MARKETING AND SALES BY  
DOUGLAS ELLIMAN DEVELOPMENT MARKETING

Broker participation welcome. Oral representation cannot be relied upon as correctly stating the representation of the Developer. For correct representation, make reference to the documents required by section 718, Florida Statutes, to be furnished by the Developer or Buyer or Lessee. Not an offer where prohibited by State Statutes. Plans, features and amenities subject to change without notice. All illustrations and plans are artist conceptual renderings and are subject to change without notice. This advertisement does not constitute an offer in the states of NY or NJ or any jurisdiction where prior registration or other qualification is required. EQUAL HOUSING OPPORTUNITY. The sketches, renderings, graphic materials, plans, specifications, terms, conditions and statements contained in this brochure are proposed only, and the Developer reserves the right to modify, revise or withdraw any or all of same in its sole discretion and without prior notice. All improvements, designs and construction are subject to first obtaining the appropriate federal, state and local permits and approvals for same. These drawings and depictions are conceptual only and are for the convenience of reference and including artists renderings. They should not be relied upon as representations, express or implied, of the final detail of the residences or the Condominium. The developer expressly reserves the right to make modifications, revisions, and changes it deems desirable in its sole and absolute discretion. All depictions of appliances, counters, closets, floor coverings and other matters of detail, including, without limitation, items of finish and decoration, are conceptual only and are not necessarily included in each Unit.

EQUAL HOUSING OPPORTUNITY







CLUB RESIDENCES

TWO PARK GROVE

ONE PARK GROVE

# POOL/GARDENS LEVEL





# ONE PARK GROVE

OMA · REM KOOLHAAS

*Coconut Grove, Miami*



BISCAYNE  
BAY

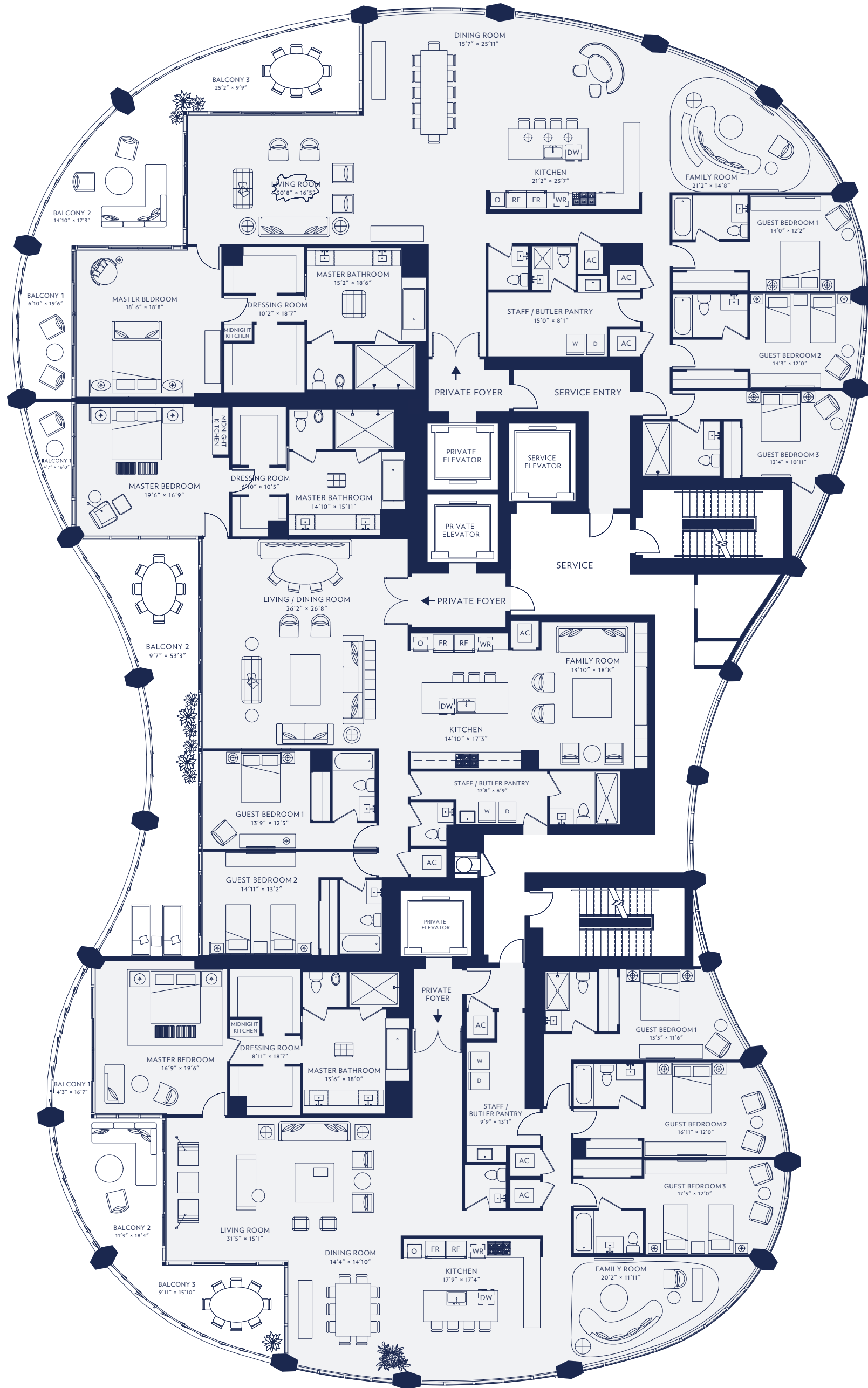


BISCAYNE  
BAY

RESIDENCE A

RESIDENCE B

RESIDENCE C



DOWNTOWN

Stated square footages and dimensions are measured to the exterior boundaries of the exterior walls and the centerline of interior demising walls and in fact vary from the square footage and dimensions that would be determined by using the description and definition of the "Unit" set forth in the Declaration (which generally only includes the interior airspace between the perimeter walls and excludes all interior structural components and other common elements). This method is generally used in sales materials and is provided to allow a prospective buyer to compare the Units with units in other condominium projects that utilize the same method. Measurements of rooms set forth on this floor plan are generally taken at the farthest points of each given room (as if the room were a perfect rectangle), without regard for any cutouts or variations. Accordingly, the area of the actual room will typically be smaller than the product obtained by multiplying the stated length and width. All dimensions are estimates which will vary with actual construction, and all floor plans, specifications and other development plans are subject to change and will not necessarily accurately reflect the final plans and specifications for the development.



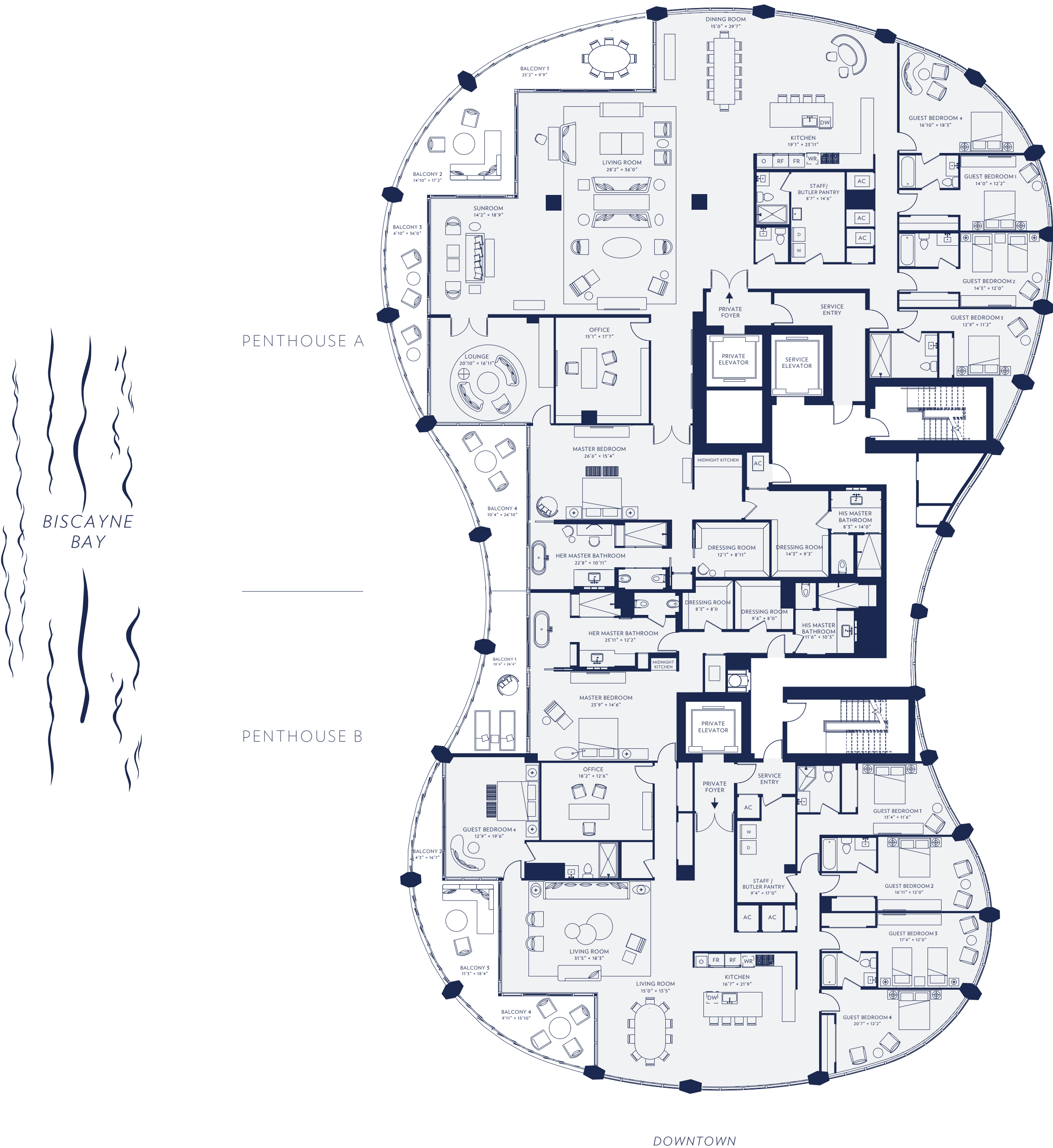
# ONE PARK GROVE

OMA · REM KOOLHAAS

*Coconut Grove, Miami*



BISCAYNE  
BAY



Stated square footages and dimensions are measured to the exterior boundaries of the exterior walls and the centerline of interior demising walls and in fact vary from the square footage and dimensions that would be determined by using the description and definition of the "Unit" set forth in the Declaration (which generally only includes the interior airspace between the perimeter walls and excludes all interior structural components and other common elements). This method is generally used in sales materials and is provided to allow a prospective buyer to compare the Units with units in other condominium projects that utilize the same method. Measurements of rooms set forth on this floor plan are generally taken at the farthest points of each given room (as if the room were a perfect rectangle), without regard for any cutouts or variations. Accordingly, the area of the actual room will typically be smaller than the product obtained by multiplying the stated length and width. All dimensions are estimates which will vary with actual construction, and all floor plans, specifications and other development plans are subject to change and will not necessarily accurately reflect the final plans and specifications for the development.



# ONE PARK GROVE

OMA · REM KOOLHAAS  
Coconut Grove, Miami

## RESIDENCE A

5,130 SQ FT / 476 SQ M TOTAL

4 BEDROOMS  
5 BATHROOMS  
1 POWDER ROOM

4,450 SQ FT / 413 SQ M INTERIOR  
680 SQ FT / 63 SQ M EXTERIOR

12 FOOT FLOOR-TO-CEILING GLASS  
OVERLOOKING BISCAYNE BAY

PRIVATE OVERSIZED  
WATERFRONT TERRACES

FOUR BEDROOMS,  
OPTIONAL 5 BEDROOMS

GENEROUS MASTER SUITE  
WITH MIDNIGHT KITCHEN,  
HIS & HER DRESSING ROOMS

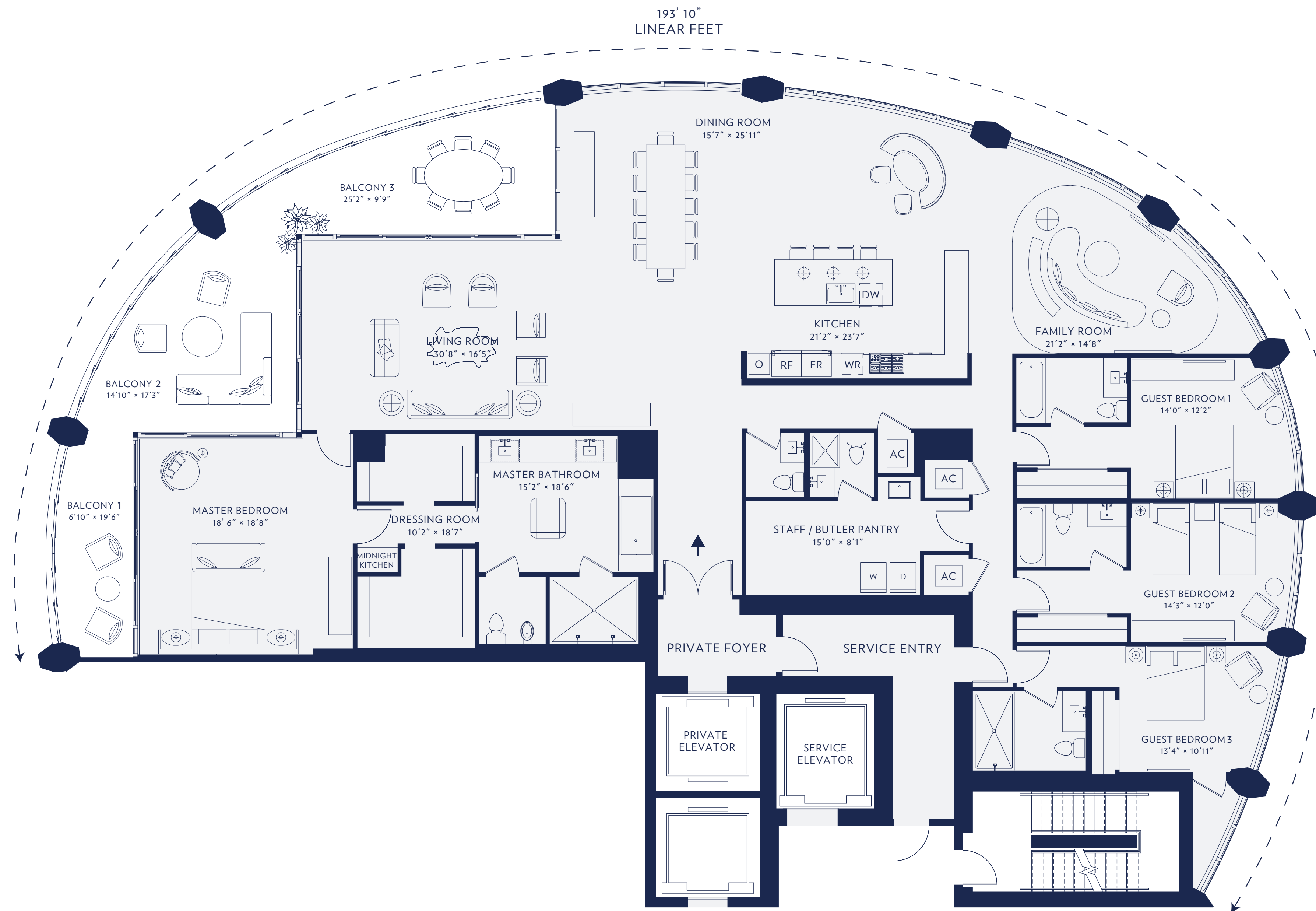
MASTER BATH WITH DOUBLE-SIZED  
SHOWER, SOAKING TUBS,  
HIS & HER VANITIES,  
PRIVATE W.C. WITH BIDET

KITCHENS AND BATHS DESIGNED BY  
WILLIAM SOFIELD



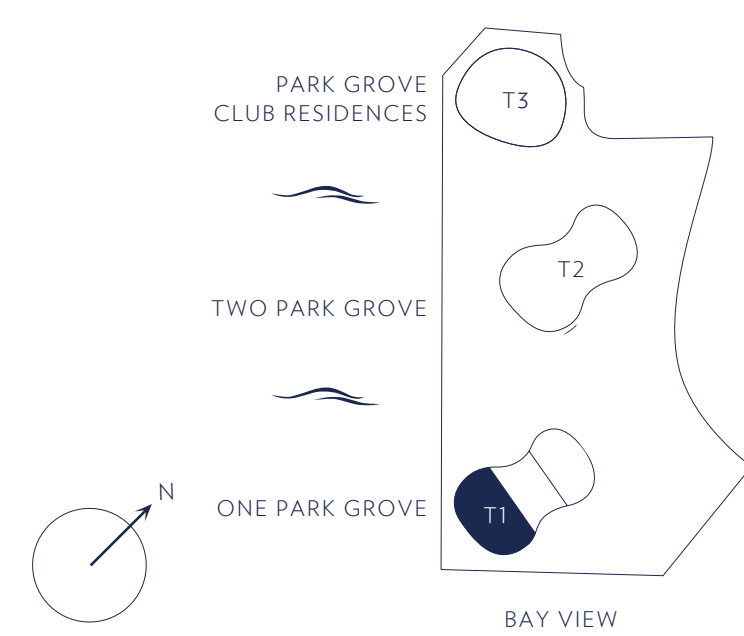
BISCAYNE  
BAY

193' 10"  
LINEAR FEET



BISCAYNE  
BAY

COCONUT  
GROVE



Stated square footages and dimensions are measured to the exterior boundaries of the exterior walls and the centerline of interior demising walls and in fact vary from the square footage and dimensions that would be determined by using the description and definition of the "Unit" set forth in the Declaration (which generally only includes the interior airspace between the perimeter walls and excludes all interior structural components and other common elements). This method is generally used in sales materials and is provided to allow a prospective buyer to compare the Units with units in other condominium projects that utilize the same method. Measurements of rooms set forth on this floor plan are generally taken at the farthest points of each given room (as if the room were a perfect rectangle), without regard for any cutouts or variations. Accordingly, the area of the actual room will typically be smaller than the product obtained by multiplying the stated length and width. All dimensions are estimates which will vary with actual construction, and all floor plans, specifications and other development plans are subject to change and will not necessarily accurately reflect the final plans and specifications for the development.





# ONE PARK GROVE

OMA · REM KOOLHAAS  
Coconut Grove, Miami

## RESIDENCE B

3,732 SQ FT / 357 SQ M TOTAL

3 BEDROOMS  
4 BATHROOMS  
1 POWDER ROOM

3,154 SQ FT / 293 SQ M INTERIOR  
578 SQ FT / 54 SQ M EXTERIOR

12 FOOT FLOOR-TO-CEILING GLASS  
OVERLOOKING BISCAYNE BAY

PRIVATE OVERSIZED  
WATERFRONT TERRACES

THREE BEDROOMS

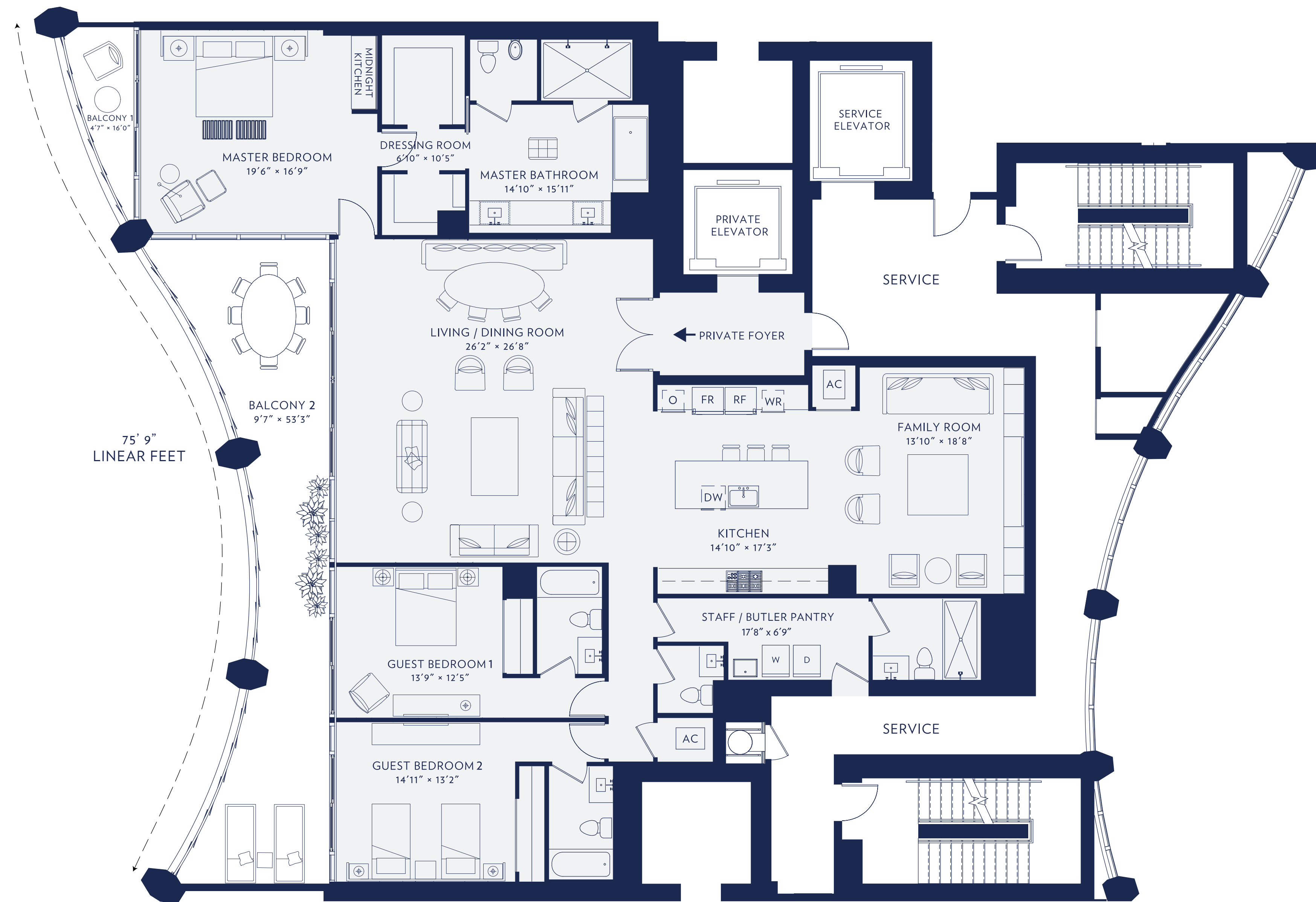
GENEROUS MASTER SUITE WITH  
MIDNIGHT KITCHEN, HIS & HER  
DRESSING ROOMS

MASTER BATH WITH DOUBLE-SIZED  
SHOWER, SOAKING TUBS,  
HIS & HER VANITIES,  
PRIVATE W.C. WITH BIDET

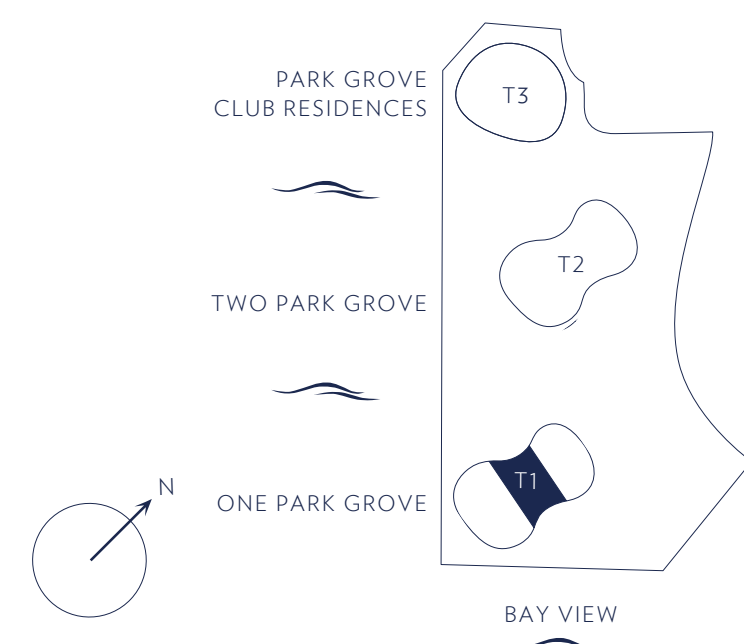
KITCHENS AND BATHS DESIGNED BY  
WILLIAM SOFIELD



BISCAYNE  
BAY



COCONUT  
GROVE



Stated square footages and dimensions are measured to the exterior boundaries of the exterior walls and the centerline of interior demising walls and in fact vary from the square footage and dimensions that would be determined by using the description and definition of the "Unit" set forth in the Declaration (which generally only includes the interior airspace between the perimeter walls and excludes all interior structural components and other common elements). This method is generally used in sales materials and is provided to allow a prospective buyer to compare the Units with units in other condominium projects that utilize the same method. Measurements of rooms set forth on this floor plan are generally taken at the farthest points of each given room (as if the room were a perfect rectangle), without regard for any cutouts or variations. Accordingly, the area of the actual room will typically be smaller than the product obtained by multiplying the stated length and width. All dimensions are estimates which will vary with actual construction, and all floor plans, specifications and other development plans are subject to change and will not necessarily accurately reflect the final plans and specifications for the development.



# ONE PARK GROVE

OMA · REM KOOLHAAS  
Coconut Grove, Miami

## RESIDENCE C

4,433 SQ FT / 412 SQ M TOTAL

4 BEDROOMS  
4 BATHROOMS  
1 POWDER ROOM

3,935 SQ FT / 366 SQ M INTERIOR  
498 SQ FT / 46 SQ M EXTERIOR

12 FOOT FLOOR-TO-CEILING GLASS  
OVERLOOKING BISCAYNE BAY

PRIVATE OVERSIZED  
WATERFRONT TERRACES

FOUR BEDROOMS,  
OPTIONAL 5 BEDROOMS

GENEROUS MASTER SUITE WITH  
MIDNIGHT KITCHEN, HIS & HER  
DRESSING ROOMS

MASTER BATH WITH DOUBLE-SIZED  
SHOWER, SPAKING TUBS,  
HIS & HER VANITIES,  
PRIVATE W.C. WITH BIDET

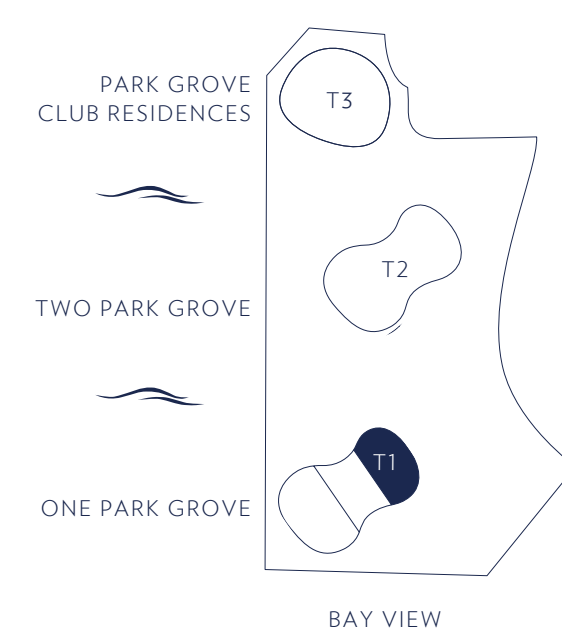
KITCHENS AND BATHS DESIGNED BY  
WILLIAM SOFIELD



BISCAYNE  
BAY



COCONUT  
GROVE



Stated square footages and dimensions are measured to the exterior boundaries of the exterior walls and the centerline of interior demising walls and in fact vary from the square footage and dimensions that would be determined by using the description and definition of the "Unit" set forth in the Declaration (which generally only includes the interior airspace between the perimeter walls and excludes all interior structural components and other common elements). This method is generally used in sales materials and is provided to allow a prospective buyer to compare the Units with units in other condominium projects that utilize the same method. Measurements of rooms set forth on this floor plan are generally taken at the farthest points of each given room (as if the room were a perfect rectangle), without regard for any cutouts or variations. Accordingly, the area of the actual room will typically be smaller than the product obtained by multiplying the stated length and width. All dimensions are estimates which will vary with actual construction, and all floor plans, specifications and other development plans are subject to change and will not necessarily accurately reflect the final plans and specifications for the development.





# ONE PARK GROVE

OMA · REM KOOLHAAS  
Coconut Grove, Miami

## RESIDENCE PH A

7,514 SQ FT / 698 SQ M TOTAL

5 BEDROOMS  
6 BATHROOMS  
1 POWDER ROOM

6,504 SQ FT / 604 SQ M Interior  
1,010 SQ FT / 94 SQ M Exterior

12 FOOT FLOOR-TO-CEILING GLASS  
OVERLOOKING BISCAYNE BAY

EXPANSIVE LIVING ROOM / LOUNGE  
LIBRARY / STUDY

GYM OR MEDIA ROOM

PRIVATE OVERSIZED  
WATERFRONT TERRACES

FIVE BEDROOMS

GENEROUS MASTER SUITE WITH  
MIDNIGHT KITCHEN,  
DOUBLE DRESSING ROOMS  
AND PRIVATE TERRACE

MASTER HIS AND HER BATHS,  
WITH FREE-STANDING BATH

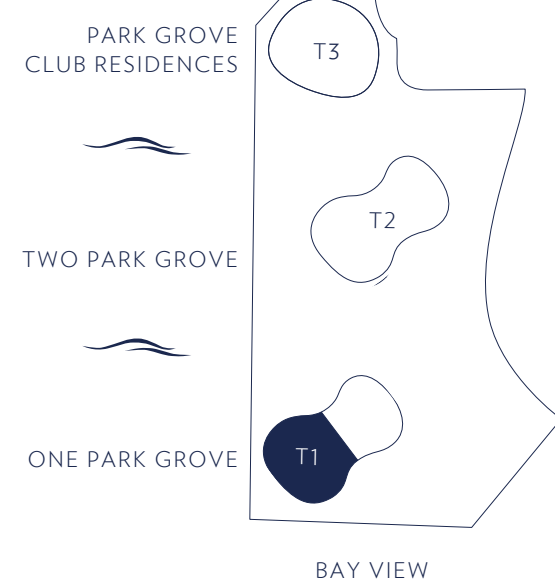
KITCHENS AND BATHS DESIGNED BY  
WILLIAM SOFIELD



270' 3"  
LINEAR FEET



COCONUT  
GROVE



Stated square footages and dimensions are measured to the exterior boundaries of the exterior walls and the centerline of interior demising walls and in fact vary from the square footage and dimensions that would be determined by using the description and definition of the "Unit" set forth in the Declaration (which generally only includes the interior airspace between the perimeter walls and excludes all interior structural components and other common elements). This method is generally used in sales materials and is provided to allow a prospective buyer to compare the Units with units in other condominium projects that utilize the same method. Measurements of rooms set forth on this floor plan are generally taken at the farthest points of each given room (as if the room were a perfect rectangle), without regard for any cutouts or variations. Accordingly, the area of the actual room will typically be smaller than the product obtained by multiplying the stated length and width. All dimensions are estimates which will vary with actual construction, and all floor plans, specifications and other development plans are subject to change and will not necessarily accurately reflect the final plans and specifications for the development.



# ONE PARK GROVE

OMA · REM KOOLHAAS  
Coconut Grove, Miami

## RESIDENCE PH B

5,796 SQ FT / 539 SQ M TOTAL

6 BEDROOMS  
6 BATHROOMS  
1 POWDER ROOM

5,066 SQ FT / 471 SQ M INTERIOR  
730 SQ FT / 68 SQ M EXTERIOR

12 FOOT FLOOR-TO-CEILING GLASS  
OVERLOOKING BISCAYNE BAY

EXPANSIVE LIVING ROOM / LOUNGE  
LIBRARY / STUDY

GYM OR MEDIA ROOM

PRIVATE OVERSIZED  
WATERFRONT TERRACES

SIX BEDROOMS

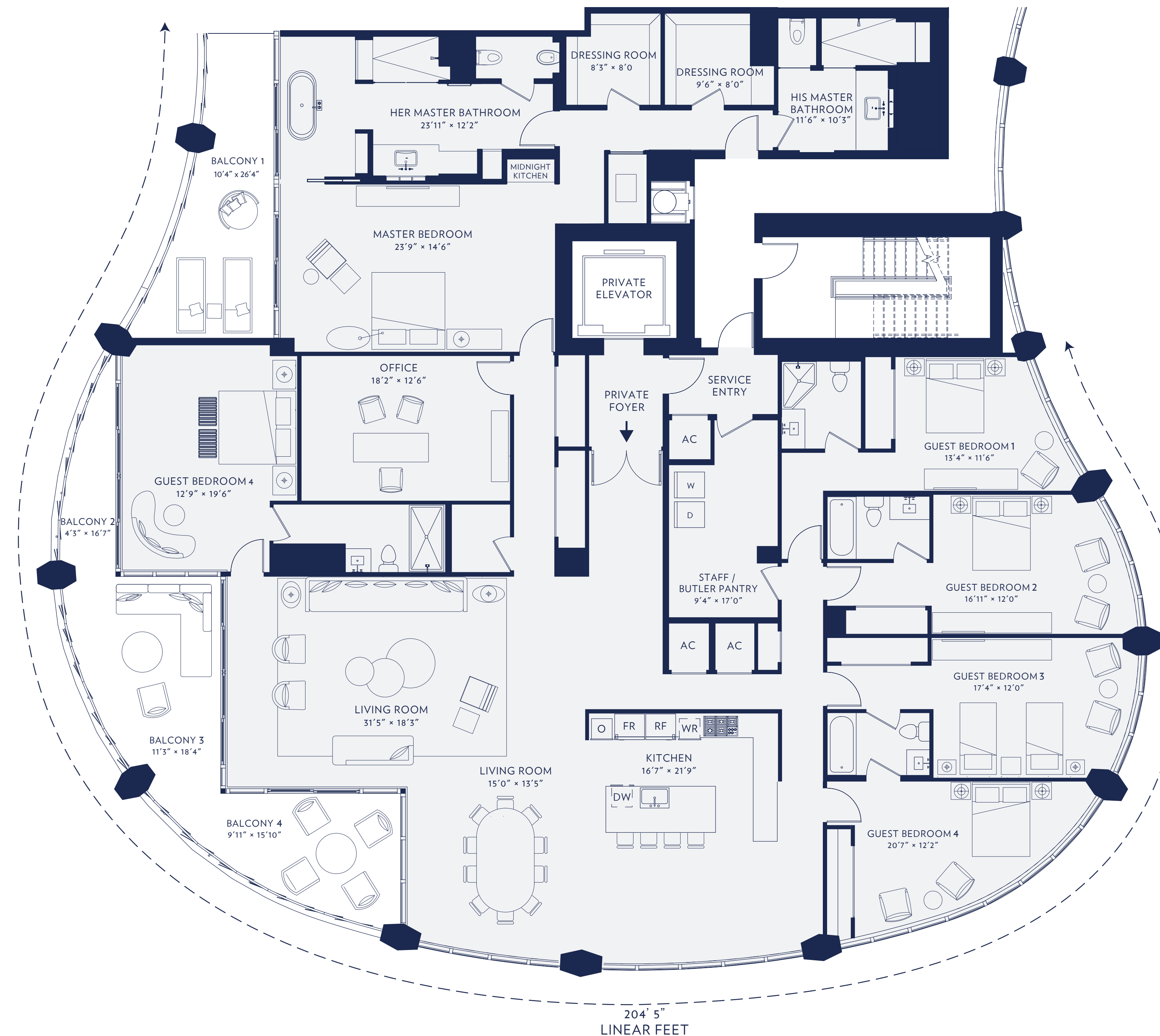
GENEROUS MASTER SUITE WITH  
MIDNIGHT KITCHEN,  
DOUBLE DRESSING ROOMS  
AND PRIVATE TERRACE

MASTER HIS AND HER BATHS,  
WITH FREE-STANDING BATH

KITCHENS AND BATHS DESIGNED BY  
WILLIAM SOFIELD



BISCAYNE  
BAY



204' 5"  
LINEAR FEET

DOWNTOWN

COCONUT  
GROVE



Stated square footages and dimensions are measured to the exterior boundaries of the exterior walls and the centerline of interior demising walls and in fact vary from the square footage and dimensions that would be determined by using the description and definition of the "Unit" set forth in the Declaration (which generally only includes the interior airspace between the perimeter walls and excludes all interior structural components and other common elements). This method is generally used in sales materials and is provided to allow a prospective buyer to compare the Units with units in other condominium projects that utilize the same method. Measurements of rooms set forth on this floor plan are generally taken at the farthest points of each given room (as if the room were a perfect rectangle), without regard for any cutouts or variations. Accordingly, the area of the actual room will typically be smaller than the product obtained by multiplying the stated length and width. All dimensions are estimates which will vary with actual construction, and all floor plans, specifications and other development plans are subject to change and will not necessarily accurately reflect the final plans and specifications for the development.





With over 50,000 square feet of carefully conceived amenity spaces—from the practical to the luxurious—and world-class services curated by Colin Cowie, **One Park Grove** offers one of the most comprehensive indoor and outdoor living experiences in Miami.

**One Park Grove** brings high-style living to an entirely new level.

bayfront residences  
three bedrooms to  
five bedrooms

#### AMENITIES

- Signature restaurant, bar and catering by chef Michael Schwartz
- Resident concierge app
- Exclusive wine tasting curated - a la carte
- 28 Seat Private Screening Room
- Wine Tasting Rooms with Private Wine Storage
- Private Dining & Event Space
- Full-Service Bar
- Poolside Cabanas
- Poolside Towel Service
- Poolside Dining
- Outdoor Bar
- Jacuzzis
- 500 ft. of Bayfront Pools and Pool Decks
- Park Grove Lounge & Bistro
- Indoor and outdoor children's play areas
- Lobby Living Room
- Lounges
- Business Centers and Meeting Rooms
- Specialty Retail
- Whole Body Fitness Centers
- Package Rooms and Mail Rooms
- Library
- Personal Training Room / Yoga & Pilates Studio
- World Class Art Collection
- Five Acres of Private Gardens by Enzo Enea
- 24-hour doorman/concierge/security
- Butler Service
- Espresso Bars

#### BUILDING FEATURES

- 50,000 SQ. FT. of luxurious lifestyle amenities designed by OMA . Rem Koolhaas and curated by Colin Cowie
- Façade featuring faceted concrete columns, the shape inspired by Coconut Grove Palm Trees, floor-to-ceiling insulated glass panels and sliding glass doors at balconies
- Private, keyed elevators
- Private art gallery and lounge
- Assigned parking spaces and valet parking available for all residences
- Reception desk custom designed by Meyer Davis



## ONE PARK GROVE

OMA · REM KOOLHAAS

*Coconut Grove, Miami*

bayfront residences  
three bedrooms to  
five bedrooms

### RESIDENCES

- Dedicated elevator lobbies and private elevators to residences
- Expansive outdoor living area
- 12-foot ceiling heights
- Aluminum floor-to-ceiling glass window walls
- Private outdoor terraces up to 1000 sq. ft.
- Natural stone and porcelain wood tile finishing flooring selections
- Pre-wired for high speed internet/ phone/data
- Solid core interior wood doors
- Electrolux 27" washing machines and 27" vented steam dryer
- Private Dining Room

### KITCHEN

- Designed by William Sofield
- Custom Italian glass cabinetry with wood hewn island
- Paonazzo marble countertops and oven wall tower or twilight hue granite countertop
- Dornbracht plumbing fixtures, chrome finish
- Stainless Steel undermount sink
- Bronze mirror backsplash
- Sub-Zero 30" Column Refrigerator
- Sub-Zero 30" Column Freezer
- Sub-Zero undercounter wine cooler
- Wolf 36" Stainless Steel Gas Cooktop
- Asco Dishwasher with custom wood hewn panel
- Wolf 30" Stainless Steel Wall Oven
- Wolf 24" Stainless Steel Built-in Coffee Maker
- Best Stainless Steel Build-in Hood
- Hand-honed wood accent pieces

### MASTER BATHROOM

- Designed by William Sofield
- Free standing soaking tub in penthouse units
- Separate His and Hers bathrooms in penthouse units
- Soaking tub with White Himalayan Spider stone surround (A, B & C units)
- Dornbracht plumbing fixtures, chrome finish
- Double vanities
- Toto toilet and bidet
- White Himalayan Spider stone vanity tops, wainscot tub surround and shower walls
- Custom Italian cerused finish wood vanities
- Herringbone patterned seashell stone flooring
- Custom-design backlit mirrors
- Full height mirrors

### SPA AND WELLNESS

- Mind Body Wellness Lounge
- Whole Body Fitness Center
- Indoor Yoga Studio and Outdoor Yoga Area
- Men's Locker Room with Plunge Pool
- Women's Locker Room with Plunge Pool
- Signature Spa with Treatment Rooms
- Couples Treatment Room
- Bio-sauna with aroma infusion and herbal steam