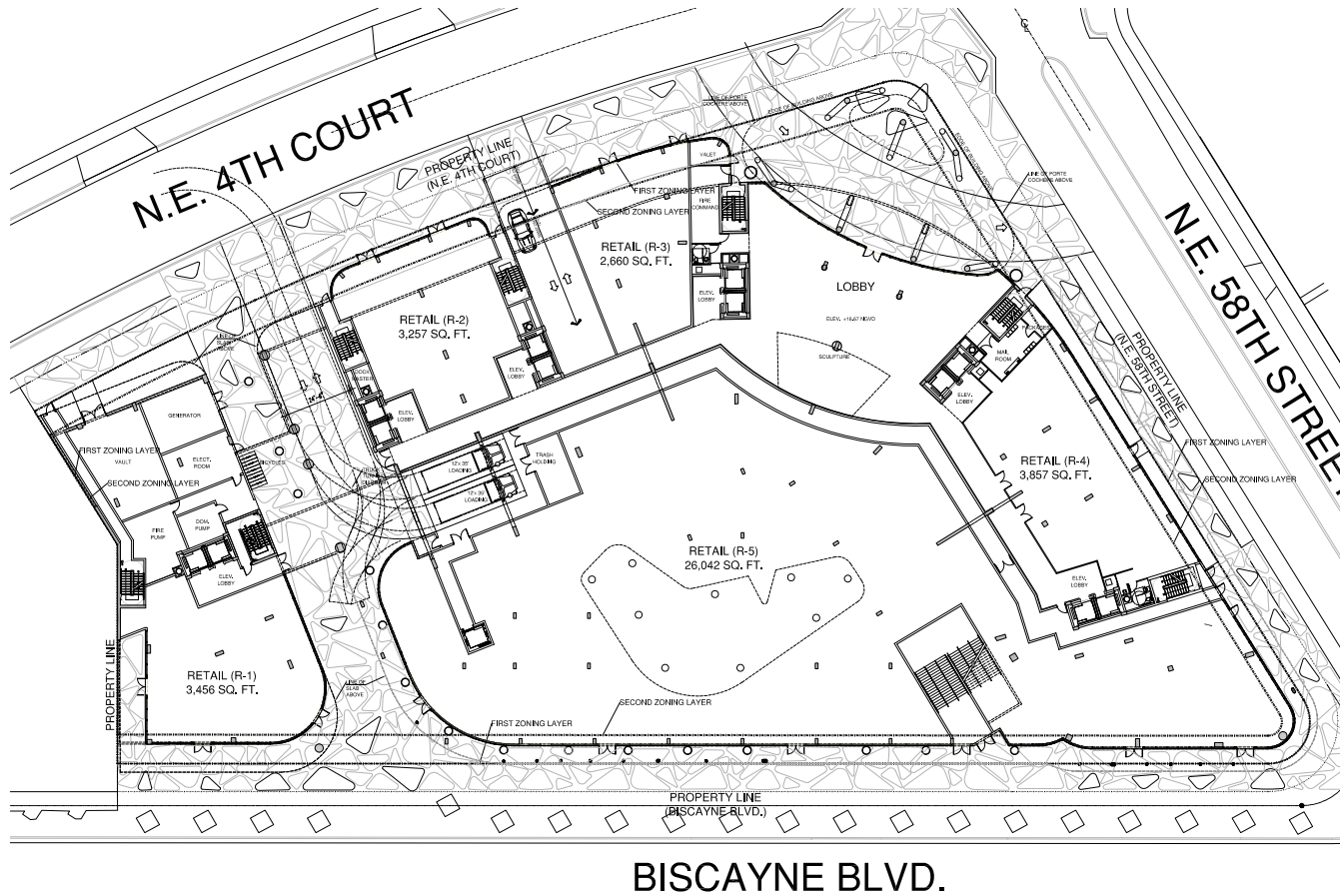


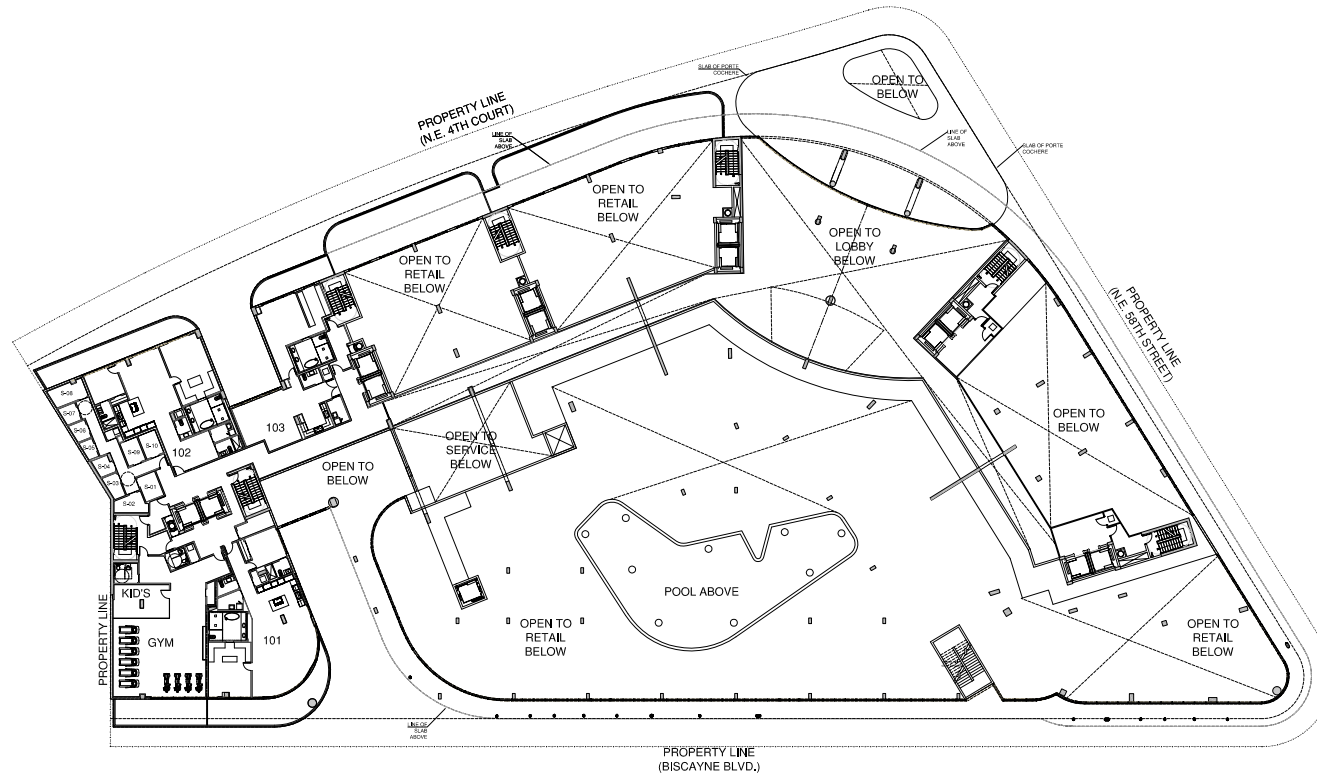
# Ground Level Floor Plan Lobby and Retail



FLOOR PLAN  
(GROUND LEVEL)  
40'

All floor plans and development plans are subject to change. The sketches, renderings, graphic materials, plans, specifications, terms, conditions and statements contained in these drawings are proposed and conceptual only and do not and will not necessarily reflect the final plans and specifications for the development. Further, Developer reserves the right to modify, revise or withdraw any or all the same in his sole discretion and without prior notice.

# Mezzanine level floor plan



FLOOR PLAN  
(MEZZANINE)

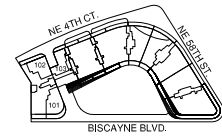


All floor plans and development plans are subject to change. The sketches, renderings, graphic materials, plans, specifications, terms, conditions and statements contained in these drawings are proposed and conceptual only and do not and will not necessarily reflect the final plans and specifications for the development. Further, Developer reserves the right to modify, revise or withdraw any or all the same in his sole discretion and without prior notice.

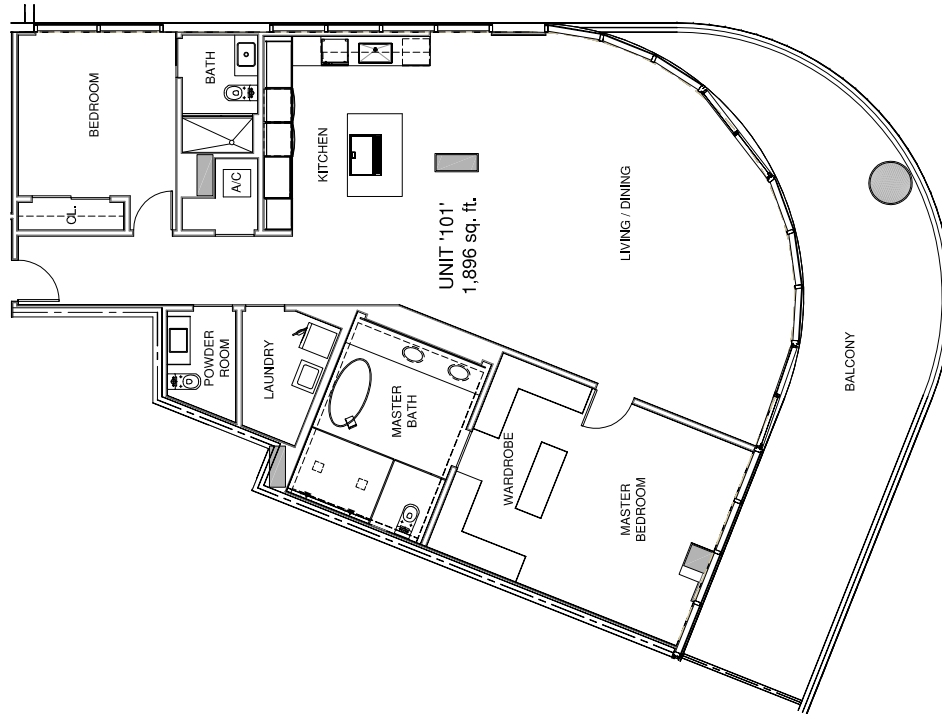
Type A  
 Mezzanine Level  
 2 bed | 2.5 baths  
 1,896 SF



BOULEVARD 57



KEY PLAN - N.T.S.



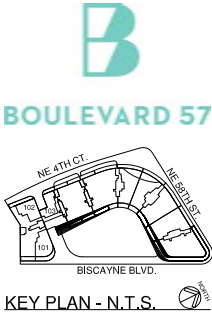
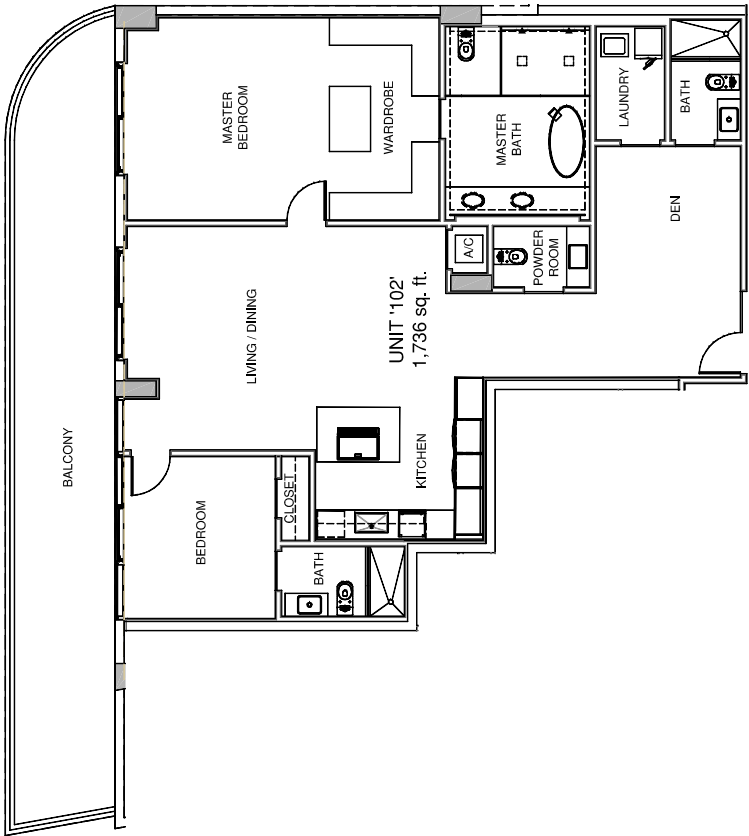
UNIT '101'  
 FLOOR PLAN  
 (LEVEL MEZZANINE)

NOTE:  
 UNITS VARY PER LEVEL, REFER TO  
 UNIT MATRIX FOR AREAS.



All floor plans and development plans are subject to change. The sketches, renderings, graphic materials, plans, specifications, terms, conditions and statements contained in these drawings are proposed and conceptual only and do not and will not necessarily reflect the final plans and specifications for the development. Further, Developer reserves the right to modify, revise or withdraw any or all the same in its sole discretion and without prior notice.

Type B  
 Mezzanine Level  
 2 bed | Den | 3.5 baths  
 1,736 SF



KEY PLAN - N.T.S.

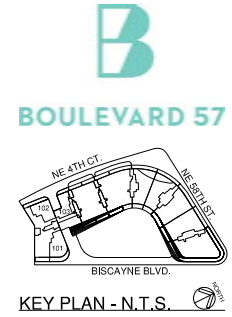
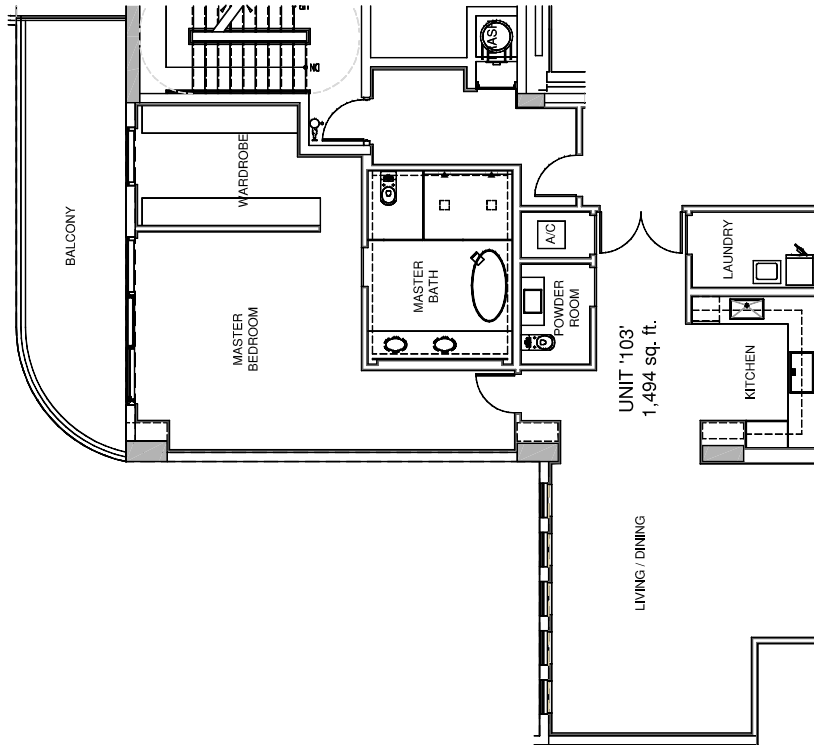
**UNIT '102'**  
**FLOOR PLAN**  
 (LEVEL MEZZANINE)

**NOTE:**  
 UNITS VARY PER LEVEL. REFER TO  
 UNIT MATRIX FOR AREAS.



All floor plans and development plans are subject to change. The sketches, renderings, graphic materials, plans, specifications, terms, conditions and statements contained in these drawings are proposed and conceptual only and do not and will not necessarily reflect the final plans and specifications for the development. Further, Developer reserves the right to modify, revise or withdraw any or all the same in its sole discretion and without prior notice.

Model C  
 Mezzanine Level  
 1 bed | 1.5 baths  
 1,494 SF



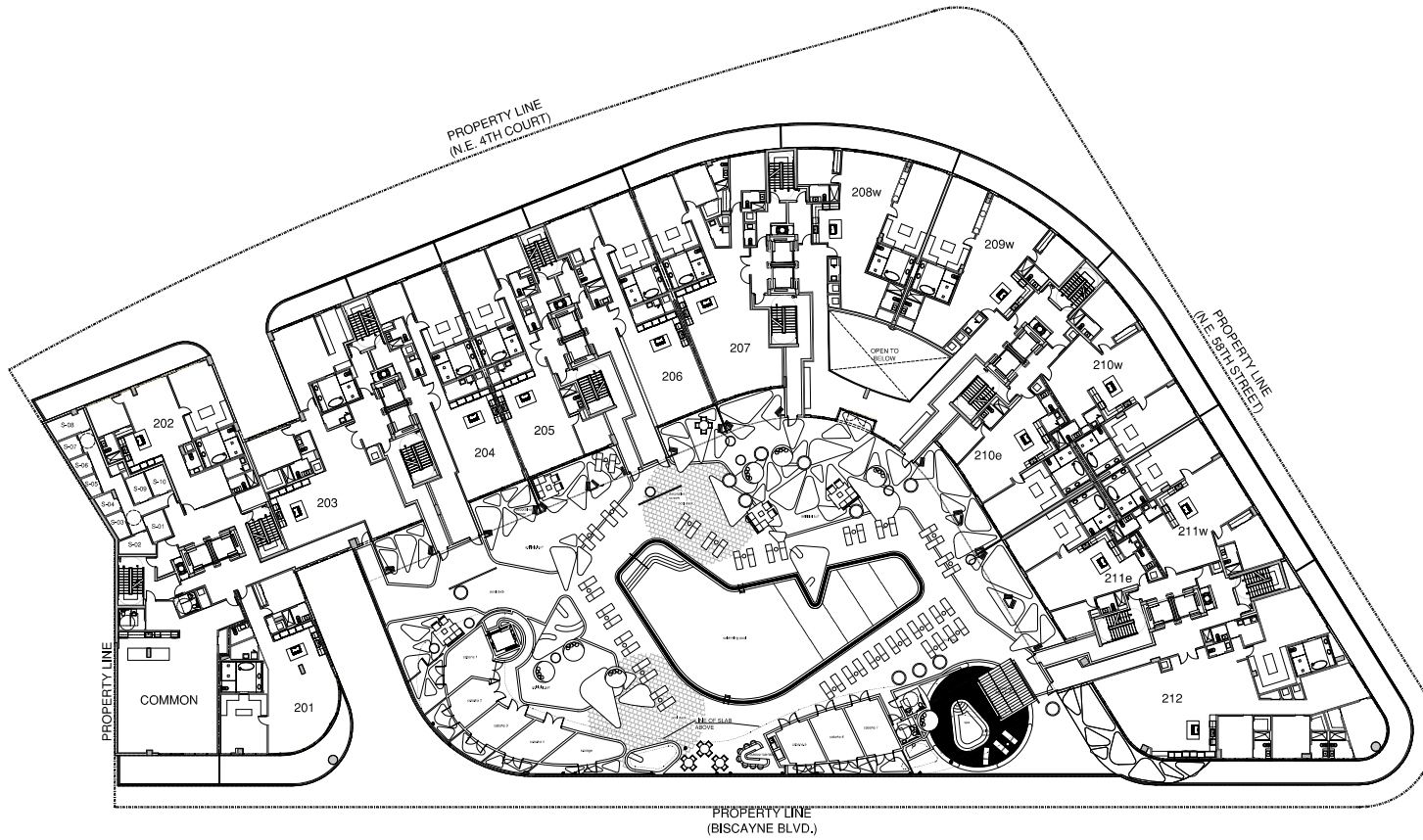
UNIT '103'  
 FLOOR PLAN  
 (LEVEL MEZZANINE)

NOTE:  
 UNITS VARY PER LEVEL, REFER TO  
 UNIT MATRIX FOR AREAS.



All floor plans and development plans are subject to change. The sketches, renderings, graphic materials, plans, specifications, terms, conditions and statements contained in these drawings are proposed and conceptual only and do not and will not necessarily reflect the final plans and specifications for the development. Further, Developer reserves the right to modify, revise or withdraw any or all the same in its sole discretion and without prior notice.

# Pool Level 2<sup>nd</sup> Floor



FLOOR PLAN  
(LEVEL 02)

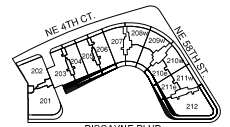


All floor plans and development plans are subject to change. The sketches, renderings, graphic materials, plans, specifications, terms, conditions and statements contained in these drawings are proposed and conceptual only and do not and will not necessarily reflect the final plans and specifications for the development. Further, Developer reserves the right to modify, revise or

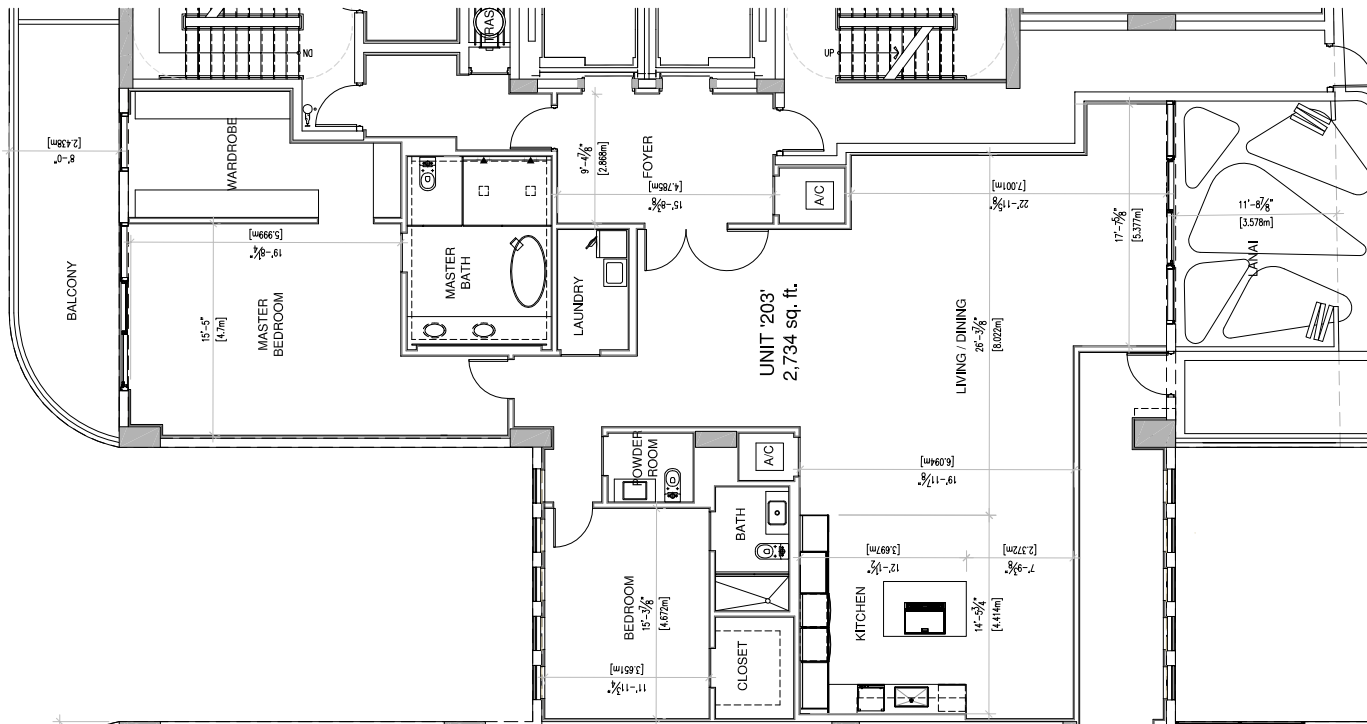
Type C  
 2<sup>nd</sup> level  
 2 bed | 2.5 baths  
 2,734 SF



BOULEVARD 57



KEY PLAN - N.T.S.



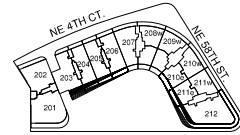
**UNIT '203'**  
**FLOOR PLAN**  
 (LEVEL 02)

**NOTE:**  
 UNITS VARY PER LEVEL. REFER TO  
 UNIT MATRIX FOR AREAS.

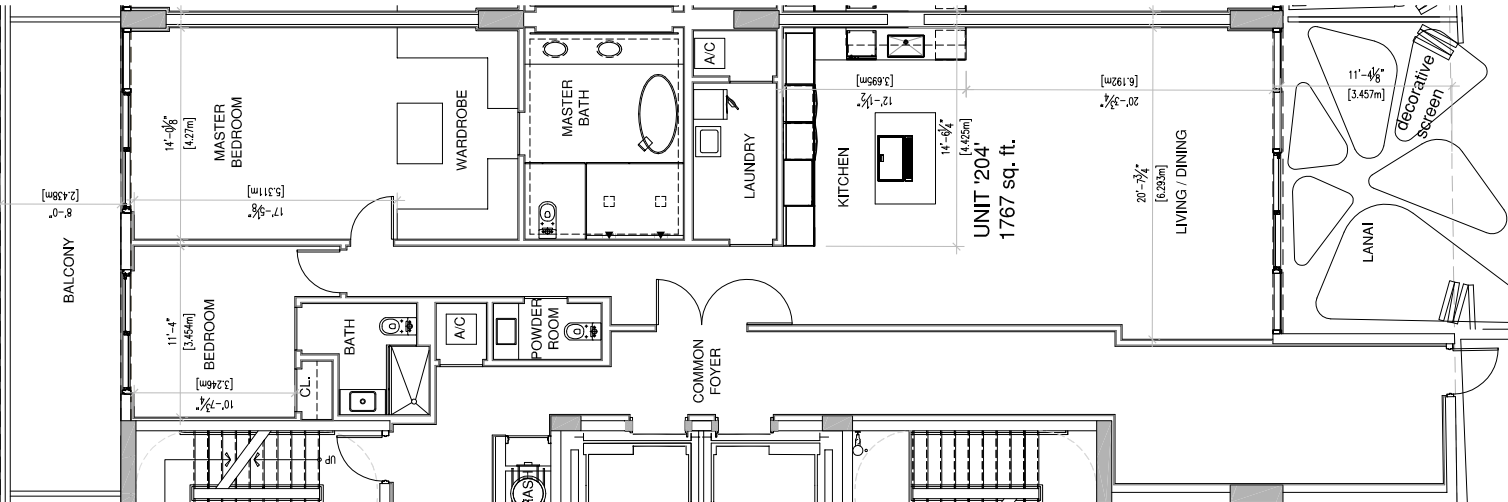


All floor plans and development plans are subject to change. The sketches, renderings, graphic materials, plans, specifications, terms, conditions and statements contained in these drawings are proposed and conceptual only and do not and will not necessarily reflect the final plans and specifications for the development. Further, Developer reserves the right to modify, revise or withdraw any or all the same in its sole discretion and without prior notice.

Type D  
 2<sup>nd</sup> level  
 2 bed | 2.5 baths  
 1,767 SF



KEY PLAN - N.T.S.



UNIT '204'  
 FLOOR PLAN  
 (LEVEL 02)

NOTE:  
 UNITS VARY PER LEVEL. REFER TO  
 UNIT MATRIX FOR AREAS.



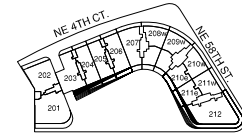
All floor plans and development plans are subject to change. The sketches, renderings, graphic materials, plans, specifications, terms, conditions and statements contained in these drawings are proposed and conceptual only and do not and will not necessarily reflect the final plans and specifications for the development. Further, Developer reserves the right to modify, revise or withdraw any or all the same in its sole discretion and without prior notice.



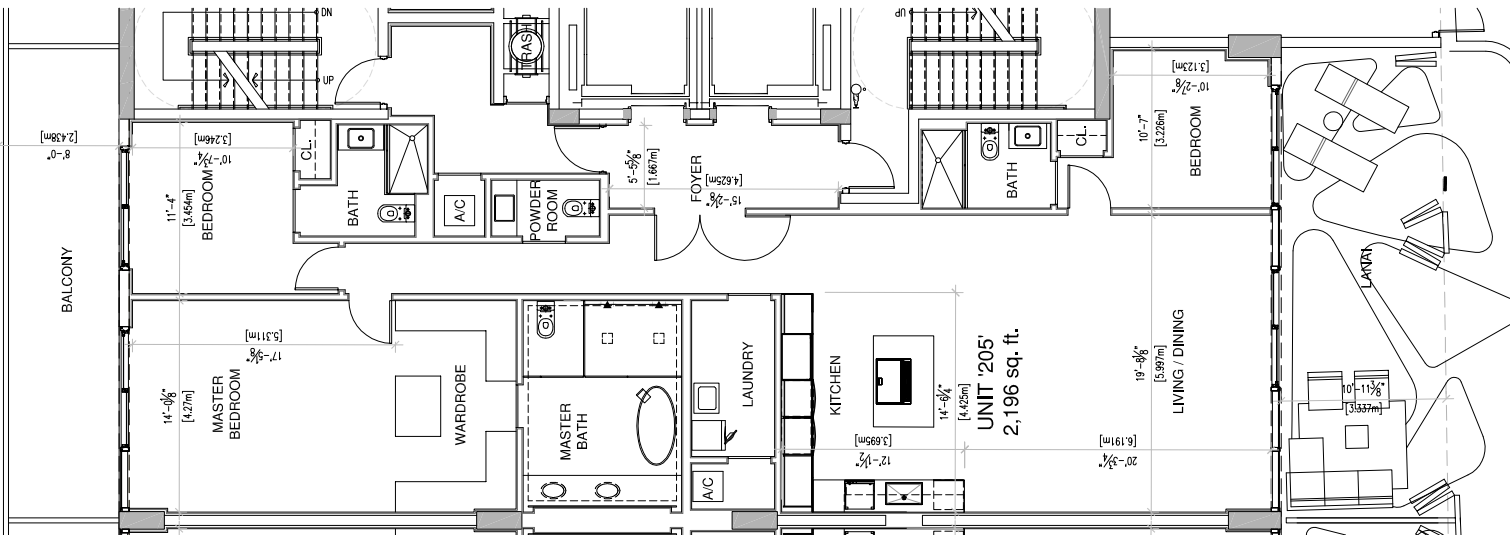
Type E  
 2<sup>nd</sup> level  
 3 bed | 3.5 baths  
 2,196 SF



BOULEVARD 57



KEY PLAN - N.T.S.



**UNIT '205'**  
**FLOOR PLAN**  
 (LEVEL 02)

**NOTE:**  
 UNITS VARY PER LEVEL, REFER TO  
 UNIT MATRIX FOR AREAS.

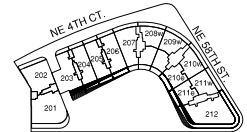


All floor plans and development plans are subject to change. The sketches, renderings, graphic materials, plans, specifications, terms, conditions and statements contained in these drawings are proposed and conceptual only and do not and will not necessarily reflect the final plans and specifications for the development. Further, Developer reserves the right to modify, revise or withdraw any or all the same in its sole discretion and without prior notice.

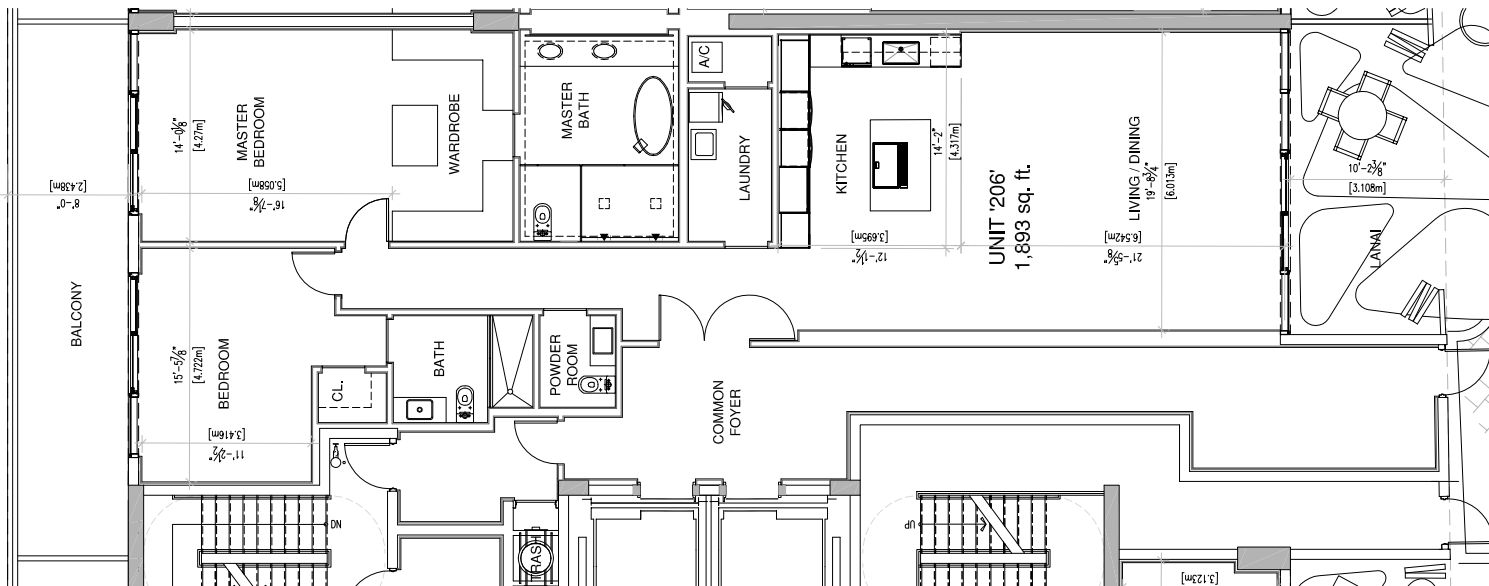
Type F  
 2<sup>nd</sup> level  
 2 bed | 2.5 baths  
 1,893 SF



BOULEVARD 57



KEY PLAN - N.T.S.



UNIT '206'  
 FLOOR PLAN  
 (LEVEL 02)

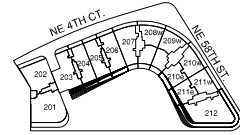
NOTE:  
 UNITS VARY PER LEVEL, REFER TO  
 UNIT MATRIX FOR AREAS.



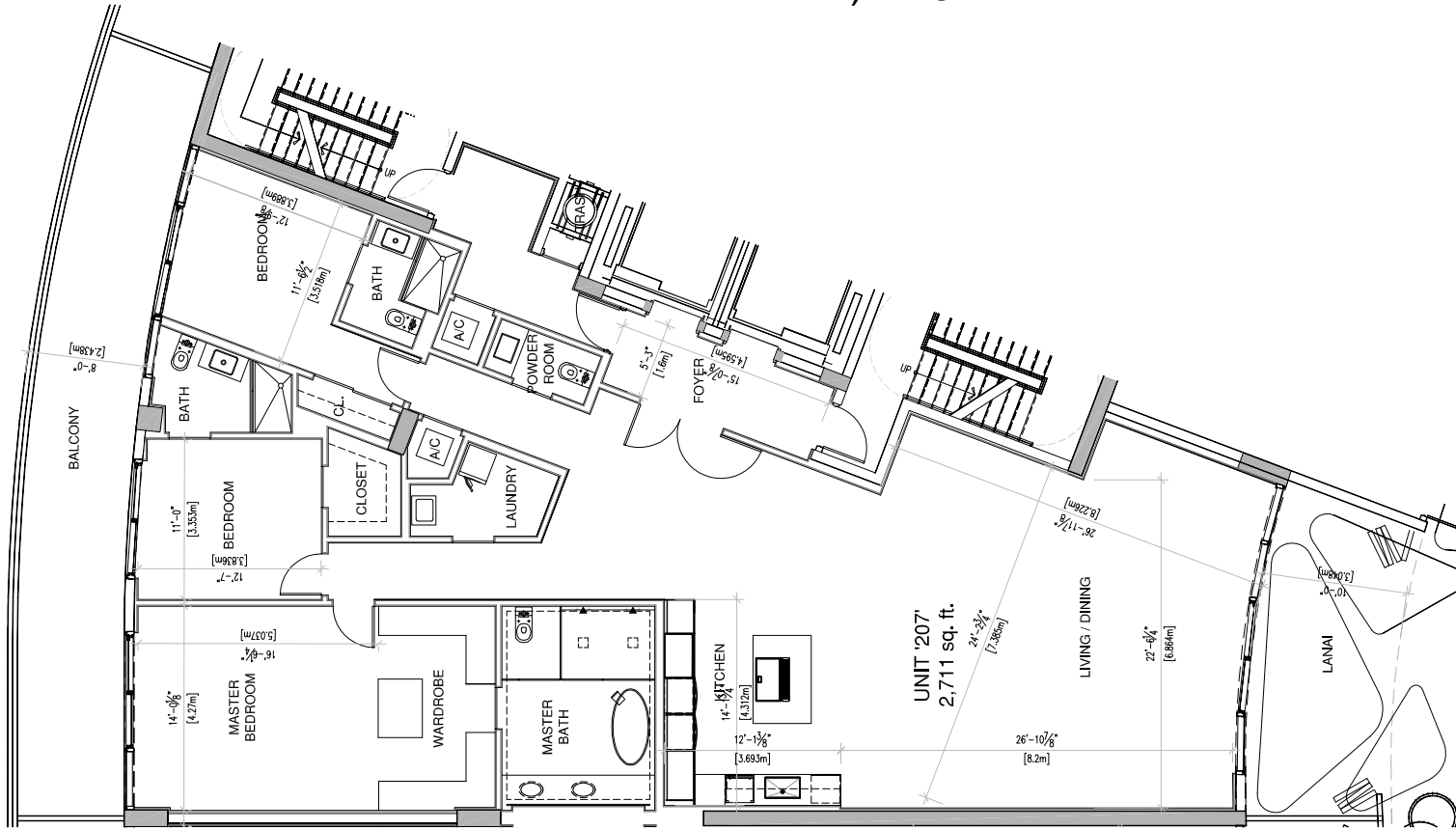
All floor plans and development plans are subject to change. The sketches, renderings, graphic materials, plans, specifications, terms, conditions and statements contained in these drawings are proposed and conceptual only and do not and will not necessarily reflect the final plans and specifications for the development. Further, Developer reserves the right to modify, revise or withdraw any or all the same in its sole discretion and without prior notice.

Type G  
 2<sup>nd</sup> level  
 3 bed | 3.5 baths  
 2,711 SF

**B**  
 BOULEVARD 57



KEY PLAN - N.T.S.



UNIT '207'  
 FLOOR PLAN  
 (LEVEL 02)

NOTE:  
 UNITS VARY PER LEVEL, REFER TO  
 UNIT MATRIX FOR AREAS.

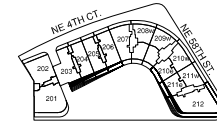


All floor plans and development plans are subject to change. The sketches, renderings, graphic materials, plans, specifications, terms, conditions and statements contained in these drawings are proposed and conceptual only and do not and will not necessarily reflect the final plans and specifications for the development. Further, Developer reserves the right to modify, revise or withdraw any or all the same in its sole discretion and without prior notice.

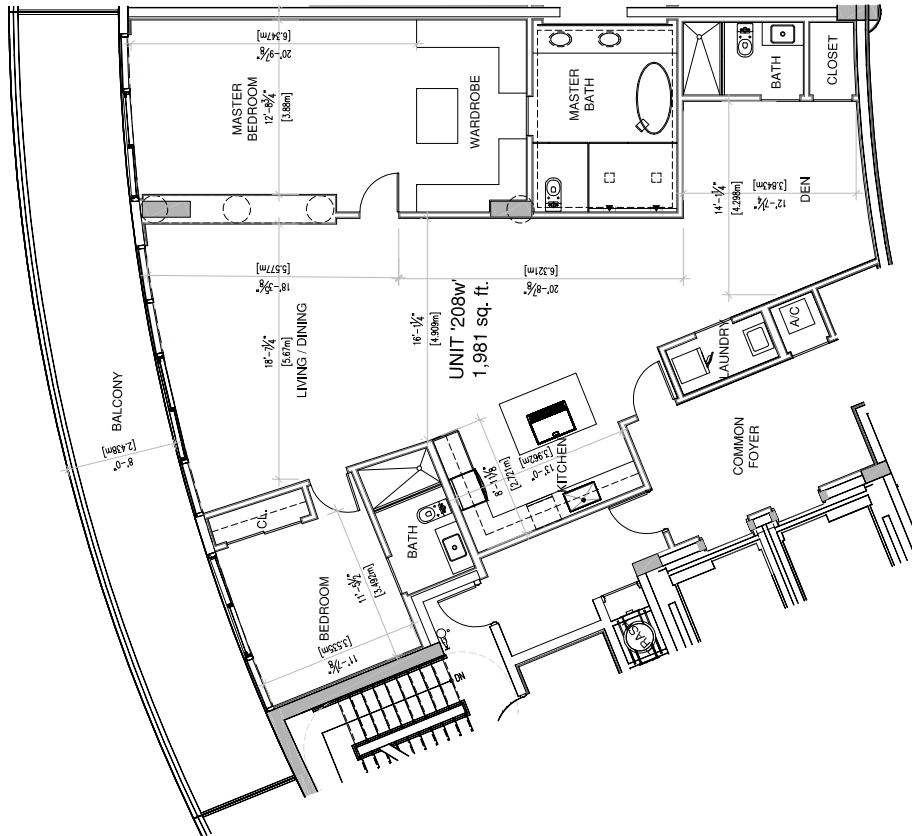
Type H (west)  
 2<sup>nd</sup> level  
 2 bed + Den | 3 baths  
 1,981 SF



BOULEVARD 57



KEY PLAN - N.T.S.



UNIT '208w'  
 FLOOR PLAN  
 (LEVEL 02)

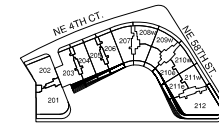


All floor plans and development plans are subject to change. The sketches, renderings, graphic materials, plans, specifications, terms, conditions and statements contained in these drawings are proposed and conceptual only and do not and will not necessarily reflect the final plans and specifications for the development. Further, Developer reserves the right to modify, revise or withdraw any or all the same in its sole discretion and without prior notice.

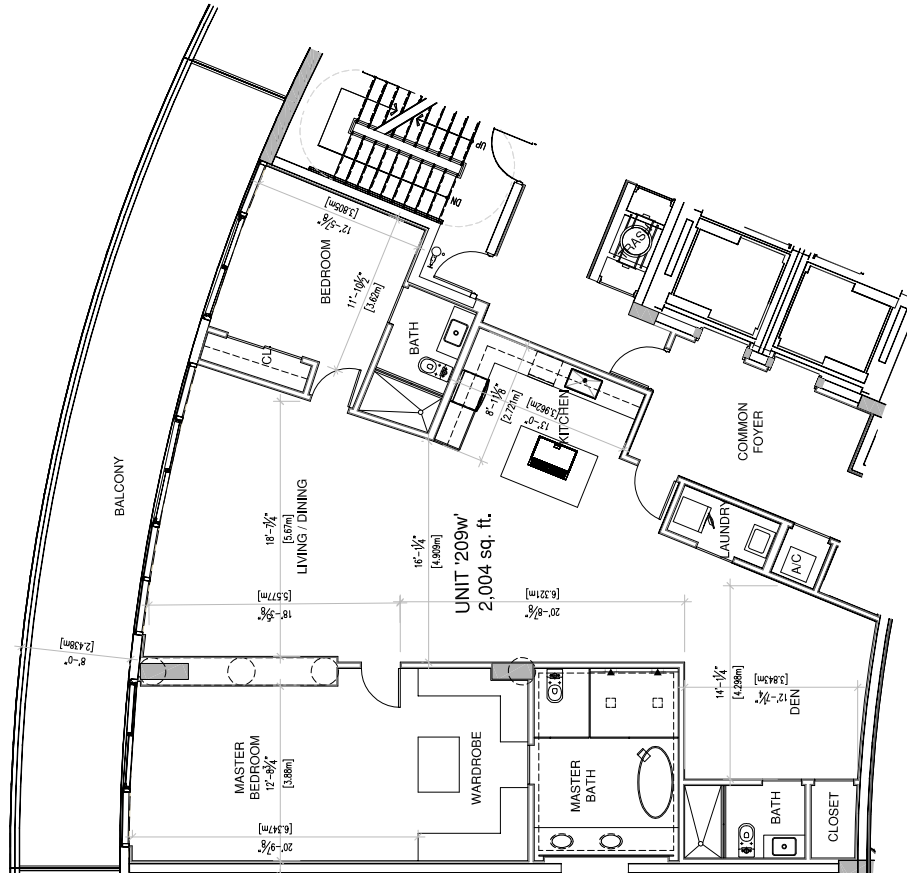
Type I (west)  
 2<sup>nd</sup> level  
 2 bed | Den | 3 baths  
 2,004 SF



BOULEVARD 57



KEY PLAN - N.T.S.



UNIT '209w'  
 FLOOR PLAN  
 (LEVEL 02)

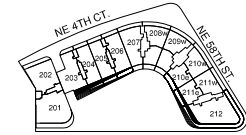


All floor plans and development plans are subject to change. The sketches, renderings, graphic materials, plans, specifications, terms, conditions and statements contained in these drawings are proposed and conceptual only and do not and will not necessarily reflect the final plans and specifications for the development. Further, Developer reserves the right to modify, revise or withdraw any or all the same in its sole discretion and without prior notice.

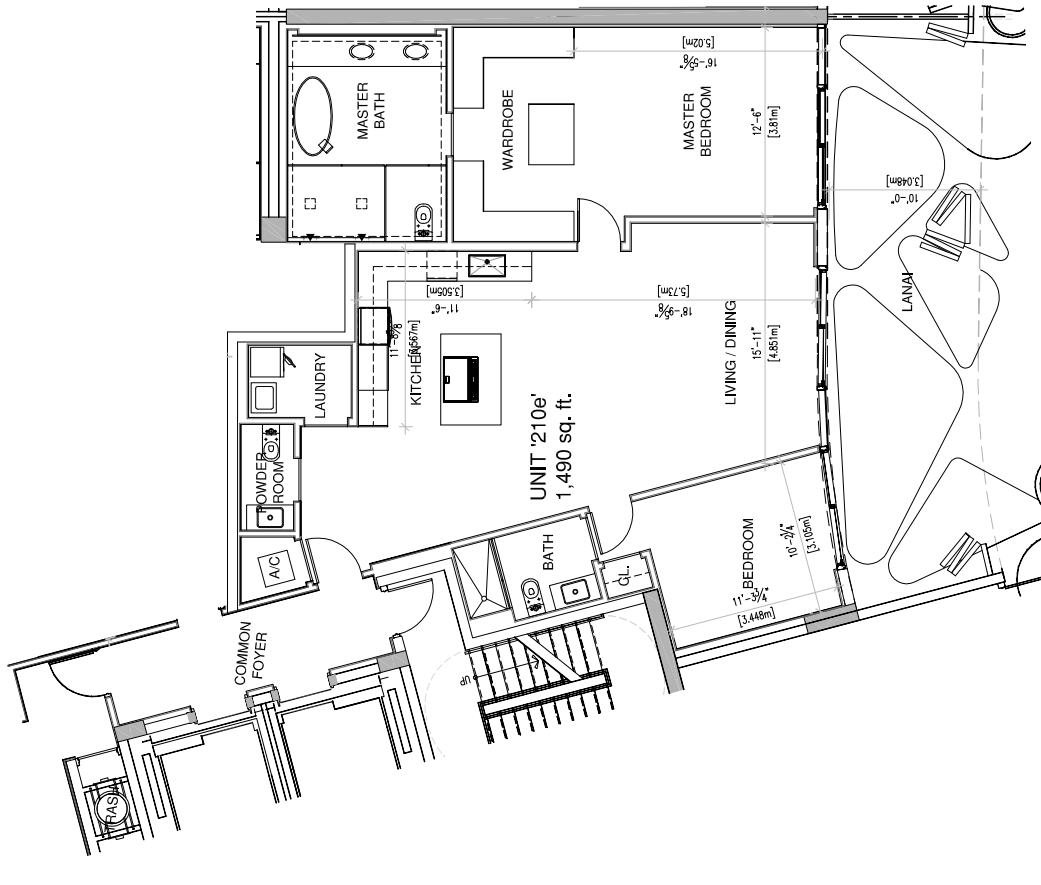
Type J (east)  
 2<sup>nd</sup> level  
 2 bed | 2.5 baths  
 1,490 SF



BOULEVARD 57



KEY PLAN - N.T.S.



UNIT '210e'  
 FLOOR PLAN  
 (LEVEL 02)

NOTE:  
 UNITS VARY PER LEVEL, REFER TO  
 UNIT MATRIX FOR AREAS.

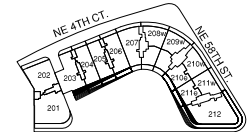


All floor plans and development plans are subject to change. The sketches, renderings, graphic materials, plans, specifications, terms, conditions and statements contained in these drawings are proposed and conceptual only and do not and will not necessarily reflect the final plans and specifications for the development. Further, Developer reserves the right to modify, revise or withdraw any or all the same in its sole discretion and without prior notice.

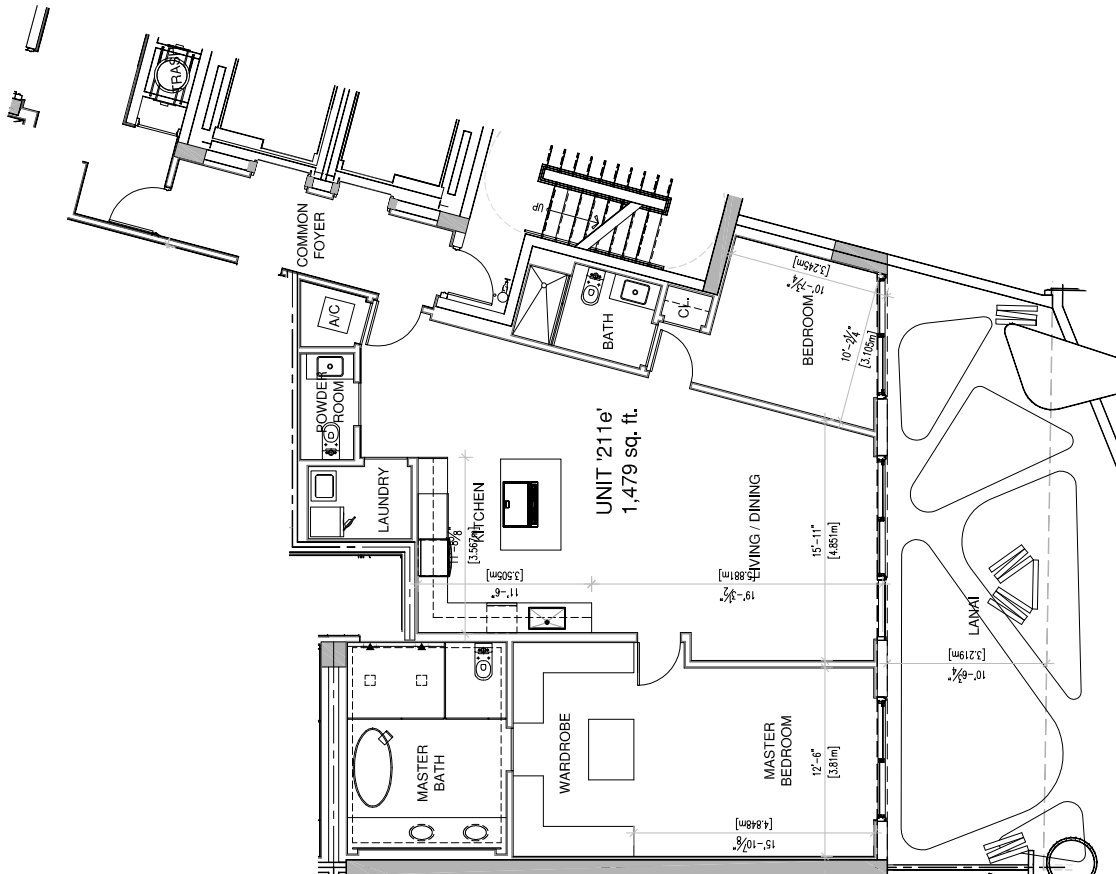
Type K (east)  
 2<sup>nd</sup> level  
 2 bed | 2.5 baths  
 1,479 SF



BOULEVARD 57



KEY PLAN - N.T.S.



UNIT '211e'  
 FLOOR PLAN  
 (LEVEL 02)

NOTE:  
 UNITS VARY PER LEVEL. REFER TO  
 UNIT MATRIX FOR AREAS.

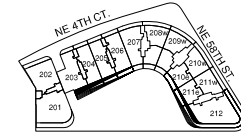


All floor plans and development plans are subject to change. The sketches, renderings, graphic materials, plans, specifications, terms, conditions and statements contained in these drawings are proposed and conceptual only and do not and will not necessarily reflect the final plans and specifications for the development. Further, Developer reserves the right to modify, revise or withdraw any or all the same in its sole discretion and without prior notice.

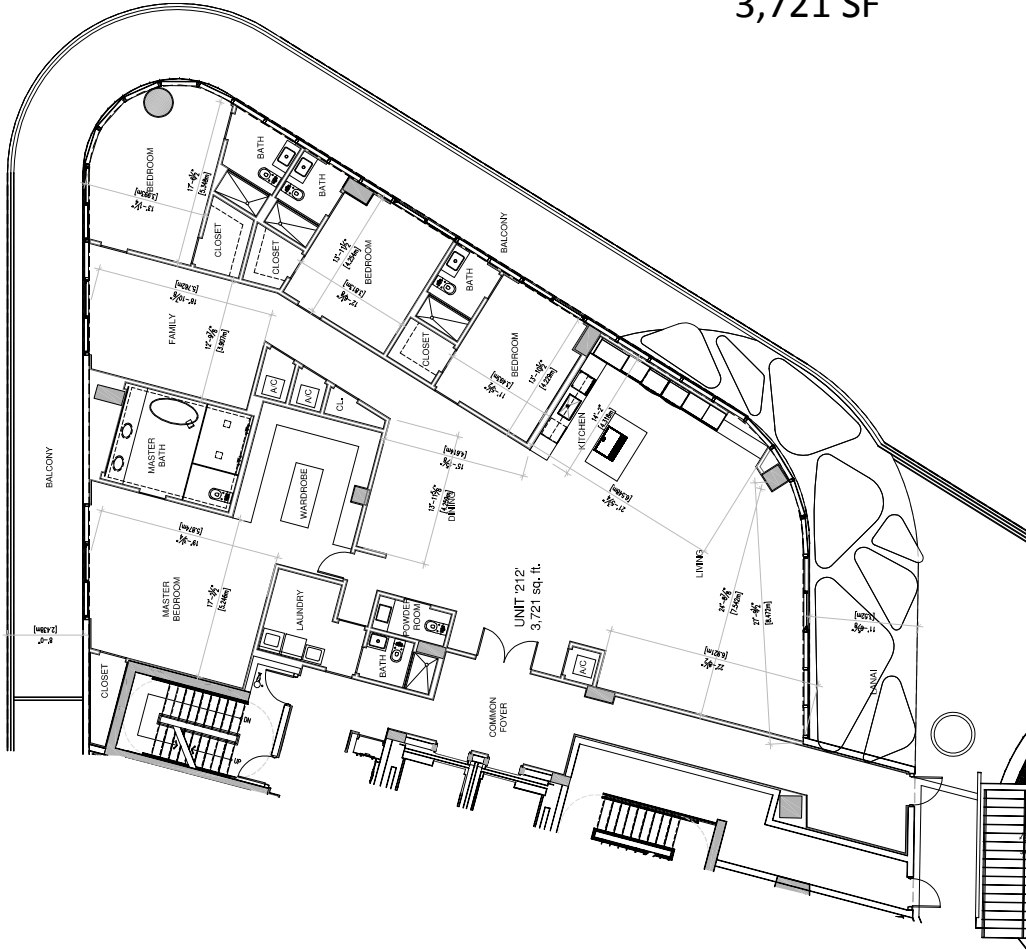
Unit L  
 2<sup>nd</sup> level  
 4bed | Family | 5.5 baths  
 3,721 SF



BOULEVARD 57



KEY PLAN - N.T.S.



UNIT '212'  
 FLOOR PLAN  
 (LEVEL 02)

NOTE:  
 UNITS VARY PER LEVEL, REFER TO  
 UNIT MATRIX FOR AREAS.



All floor plans and development plans are subject to change. The sketches, renderings, graphic materials, plans, specifications, terms, conditions and statements contained in these drawings are proposed and conceptual only and do not and will not necessarily reflect the final plans and specifications for the development. Further, Developer reserves the right to modify, revise or withdraw any or all the same in its sole discretion and without prior notice.



# Floor Plan Level 3 - 6



BOULEVARD 57

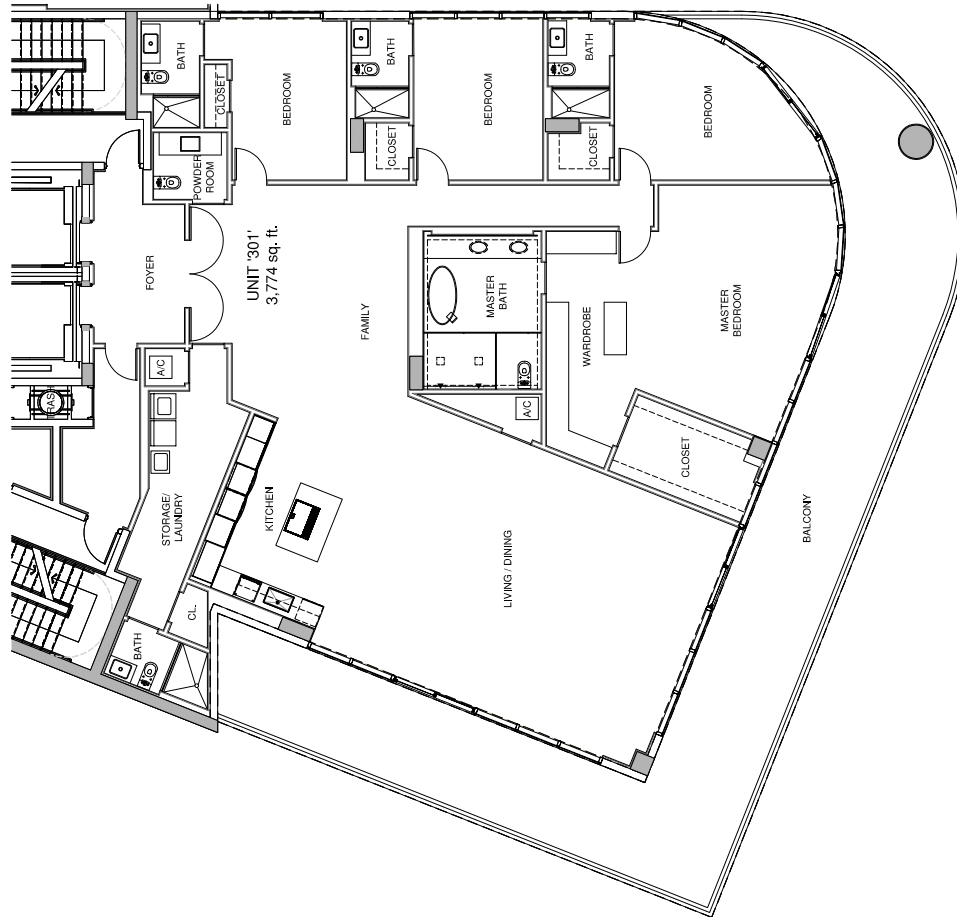


FLOOR PLAN  
(LEVELS 03 - 06)



All floor plans and development plans are subject to change. The sketches, renderings, graphic materials, plans, specifications, terms, conditions and statements contained in these drawings are proposed and conceptual only and do not and will not necessarily reflect the final plans and specifications for the development. Further, Developer reserves the right to modify, revise or

# Type A Levels 3 – 6 4 bed | Family | 5.5 baths



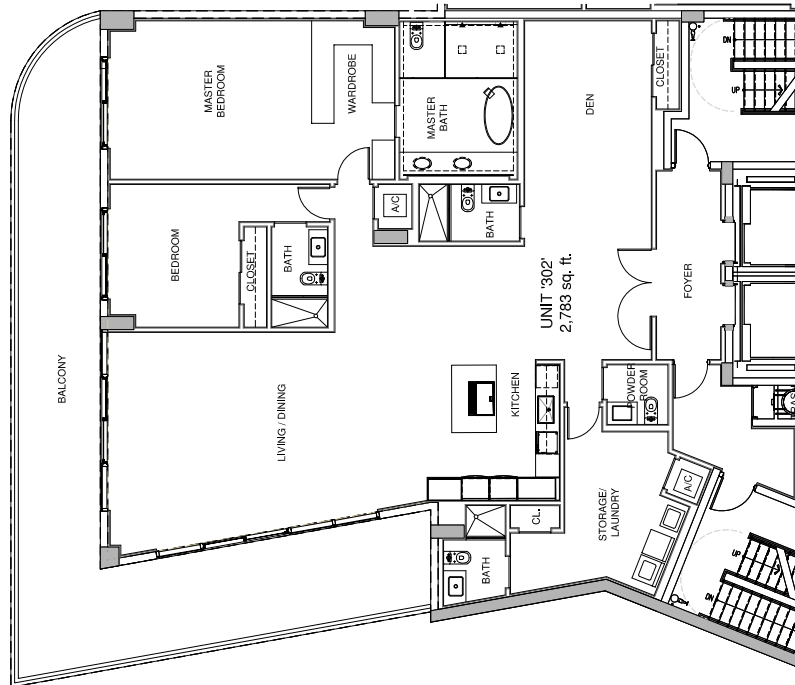
**UNIT '301'  
FLOOR PLAN  
(LEVEL 03)**

**NOTE:**  
UNITS VARY PER LEVEL. REFER TO  
UNIT MATRIX FOR AREAS.



All floor plans and development plans are subject to change. The sketches, renderings, graphic materials, plans, specifications, terms, conditions and statements contained in these drawings are proposed and conceptual only and do not and will not necessarily reflect the final plans and specifications for the development. Further, Developer reserves the right to modify, revise or withdraw any or all the same in his sole discretion and without prior notice.

Type B  
Levels 3 – 6  
2 bed | Den | 4.5 baths  
2,783 SF



KEY PLAN - N.T.S.

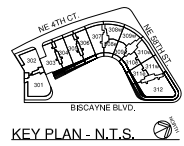
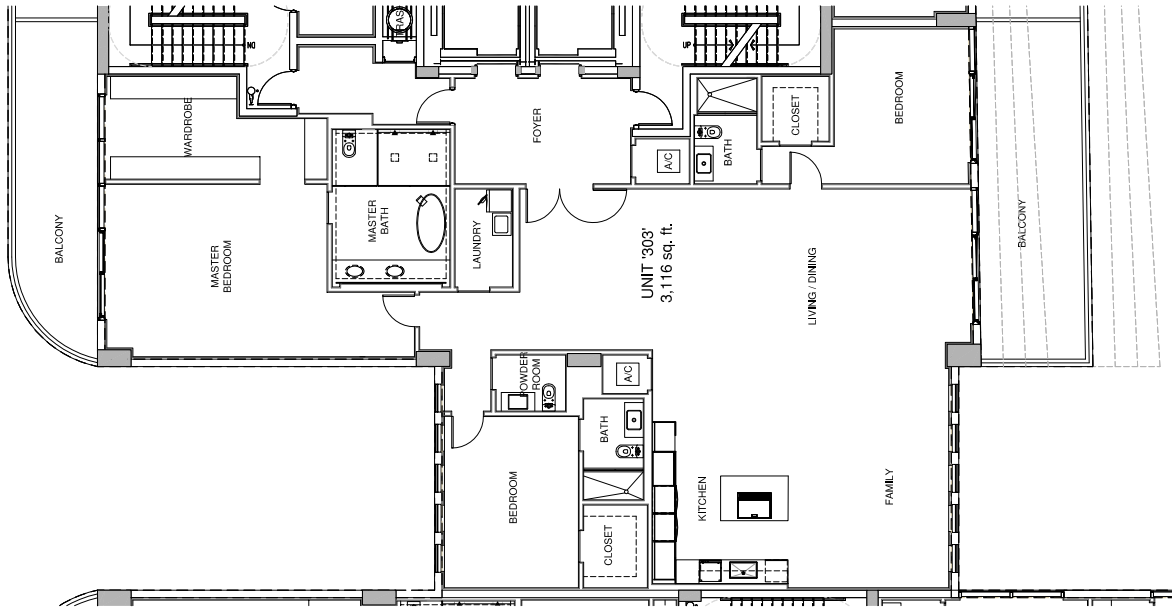
**UNIT '302'  
FLOOR PLAN  
(LEVEL 03)**

**NOTE:**  
UNITS VARY PER LEVEL. REFER TO  
UNIT MATRIX FOR AREAS.



All floor plans and development plans are subject to change. The sketches, renderings, graphic materials, plans, specifications, terms, conditions and statements contained in these drawings are proposed and conceptual only and do not and will not necessarily reflect the final plans and specifications for the development. Further, Developer reserves the right to modify, revise or withdraw any or all the same in his sole discretion and without prior notice.

Type C  
Levels 3 – 6  
3 bed | Family | 3.5 baths  
3,116 SF – 3,280 SF



**UNIT '303'  
FLOOR PLAN  
(LEVEL 03)**

NOTE:  
UNITS VARY PER LEVEL. REFER TO  
UNIT MATRIX FOR AREAS.

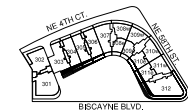


All floor plans and development plans are subject to change. The sketches, renderings, graphic materials, plans, specifications, terms, conditions and statements contained in these drawings are proposed and conceptual only and do not and will not necessarily reflect the final plans and specifications for the development. Further, Developer reserves the right to modify, revise or withdraw any or all the same in his sole discretion and without prior notice.

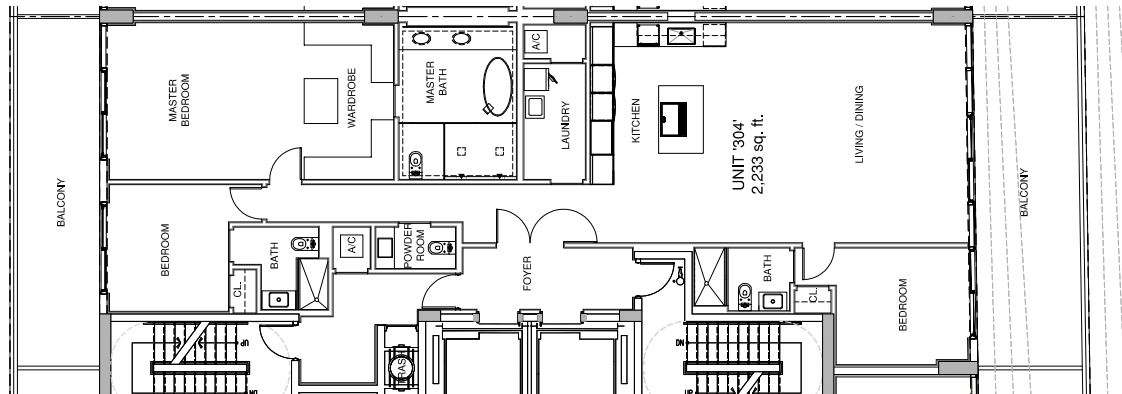
Type D  
 Levels 3 – 6  
 3 bed | 3.5 baths  
 2,233 SF – 2,356 SF



BOULEVARD 57



KEY PLAN - N.T.S.



UNIT '304'  
 FLOOR PLAN  
 (LEVEL 03)

NOTE:  
 UNITS VARY PER LEVEL. REFER TO  
 UNIT MATRIX FOR AREAS.

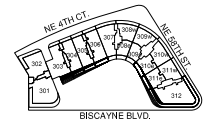


All floor plans and development plans are subject to change. The sketches, renderings, graphic materials, plans, specifications, terms, conditions and statements contained in these drawings are proposed and conceptual only and do not and will not necessarily reflect the final plans and specifications for the development. Further, Developer reserves the right to modify, revise or withdraw any or all the same in his sole discretion and without prior notice.

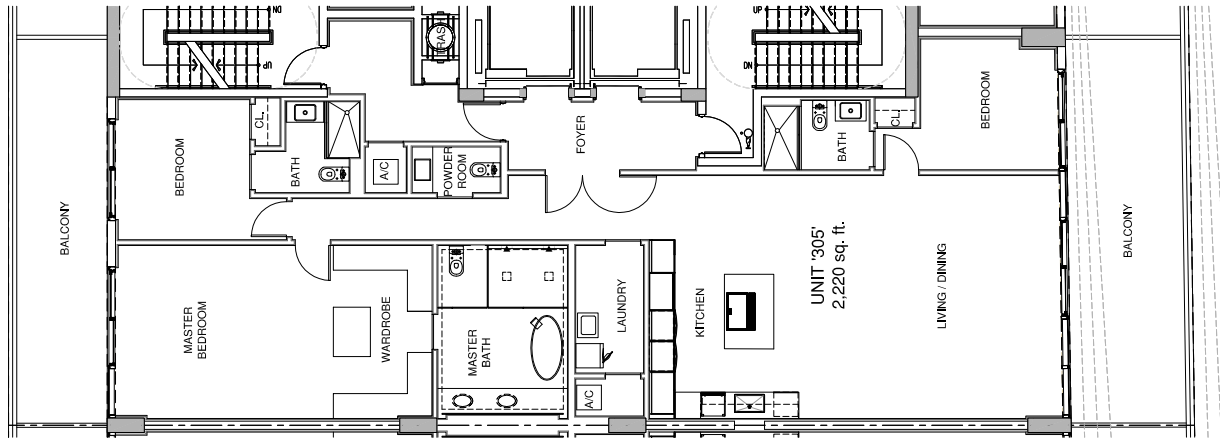
Type D  
 Levels 3 – 6  
 3 bed | 3.5 baths  
 2,220 SF – 2,298 SF



BOULEVARD 57



KEY PLAN - N.T.S.



UNIT '305'  
 FLOOR PLAN  
 (LEVEL 03)

NOTE:  
 UNITS VARY PER LEVEL, REFER TO  
 UNIT MATRIX FOR AREAS.

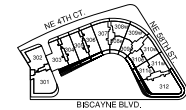


All floor plans and development plans are subject to change. The sketches, renderings, graphic materials, plans, specifications, terms, conditions and statements contained in these drawings are proposed and conceptual only and do not and will not necessarily reflect the final plans and specifications for the development. Further, Developer reserves the right to modify, revise or

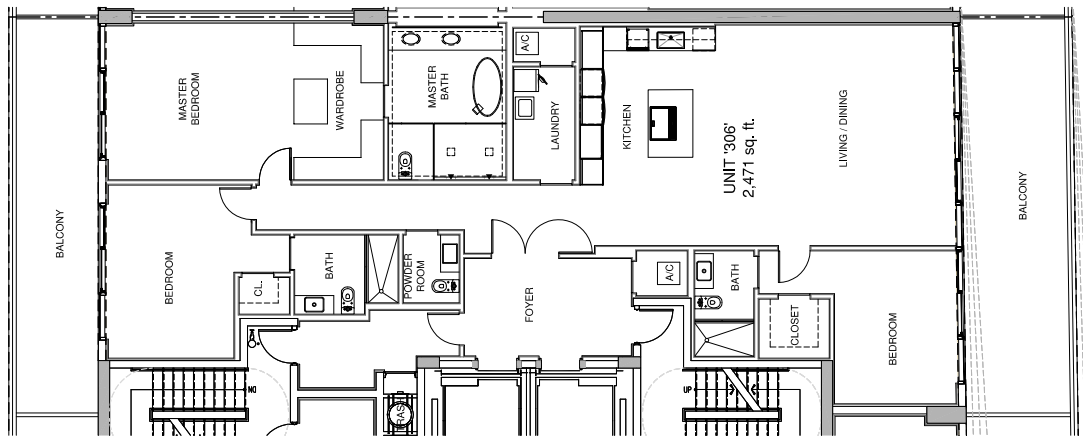
Type F  
 Levels 3 – 6  
 3 bed | 3.5 baths  
 2,471 SF – 2,505 SF



BOULEVARD 57



KEY PLAN - N.T.S.



UNIT '306'  
 FLOOR PLAN  
 (LEVEL 03)

NOTE:  
 UNITS VARY PER LEVEL. REFER TO  
 UNIT MATRIX FOR AREAS.

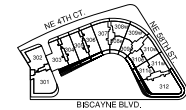


All floor plans and development plans are subject to change. The sketches, renderings, graphic materials, plans, specifications, terms, conditions and statements contained in these drawings are proposed and conceptual only and do not and will not necessarily reflect the final plans and specifications for the development. Further, Developer reserves the right to modify, revise or withdraw any or all the same in his sole discretion and without prior notice.

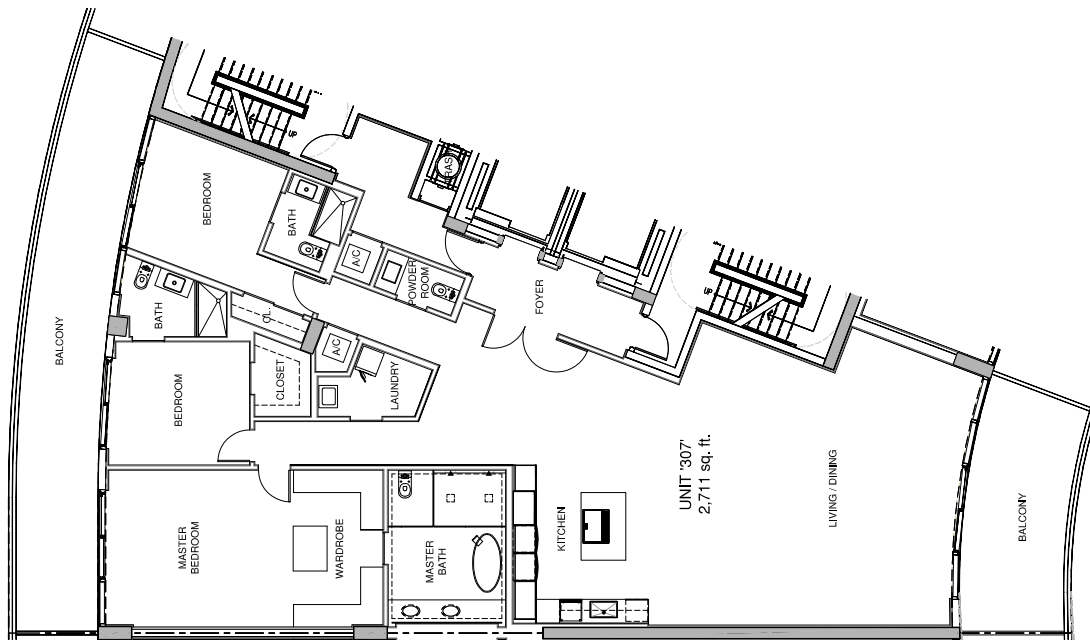
Unit G  
 Levels 3 – 6  
 3 bed | 3.5 baths  
 2,711 SF



BOULEVARD 57



KEY PLAN - N.T.S.



UNIT '307'  
 FLOOR PLAN  
 (LEVEL 03)

NOTE:  
 UNITS VARY PER LEVEL. REFER TO  
 UNIT MATRIX FOR AREAS.



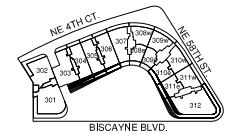
All floor plans and development plans are subject to change. The sketches, renderings, graphic materials, plans, specifications, terms, conditions and statements contained in these drawings are proposed and conceptual only and do not and will not necessarily reflect the final plans and specifications for the development. Further, Developer reserves the right to modify, revise or withdraw any or all the same in his sole discretion and without prior notice.



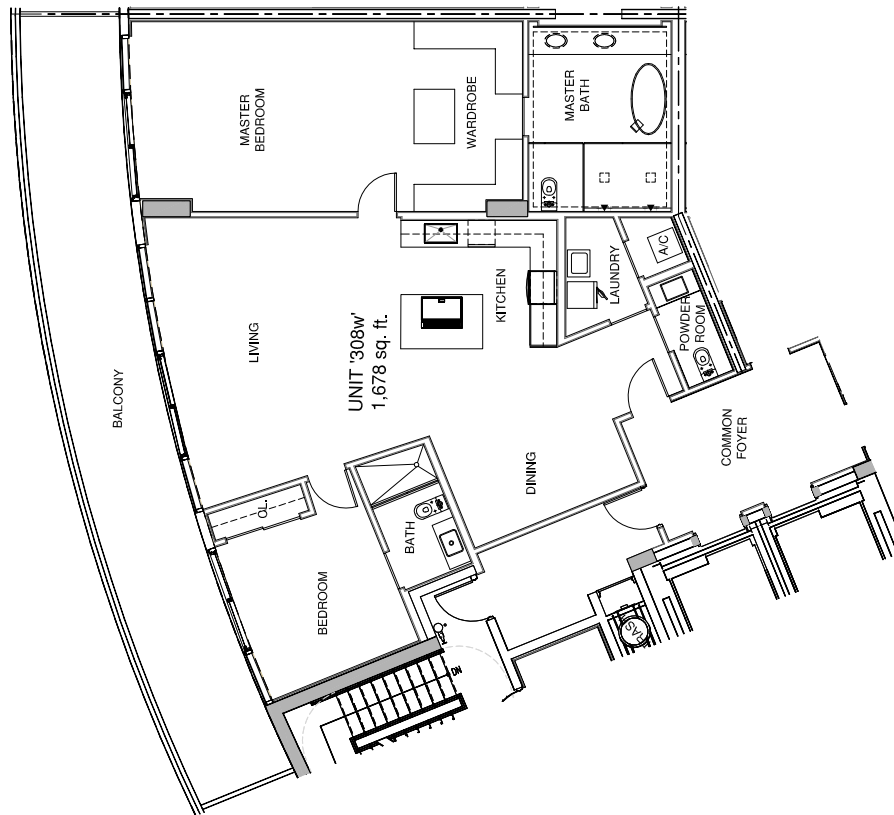
Type H (west)  
Levels 3 – 6  
2 bed | 2.5 baths  
1,678 SF



BOULEVARD 57



KEY PLAN - N.T.S.



UNIT '308w'  
FLOOR PLAN  
(LEVELS 03-06)

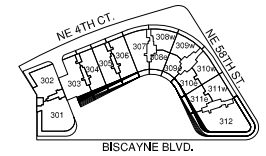


All floor plans and development plans are subject to change. The sketches, renderings, graphic materials, plans, specifications, terms, conditions and statements contained in these drawings are proposed and conceptual only and do not and will not necessarily reflect the final plans and specifications for the development. Further, Developer reserves the right to modify, revise or withdraw any or all the same in its sole discretion and without prior notice.

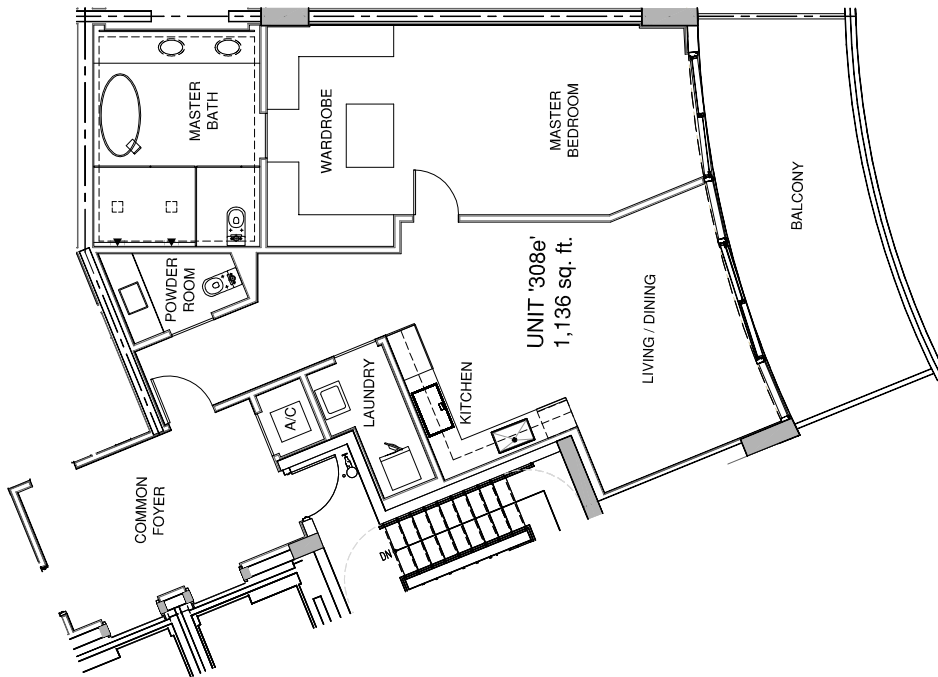
Type H (east)  
Levels 3 – 6  
1 bed | 1.5 baths  
1,136 SF



BOULEVARD 57



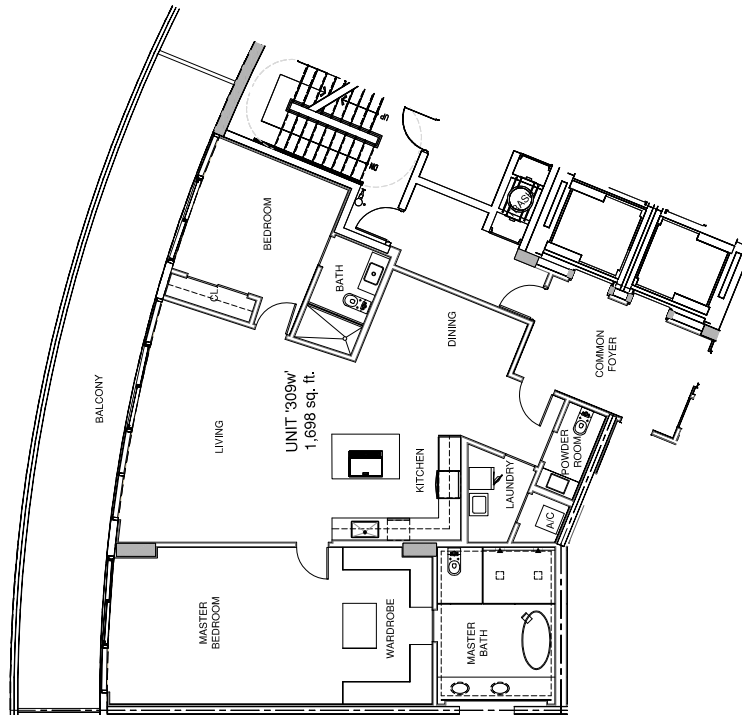
KEY PLAN - N.T.S. 



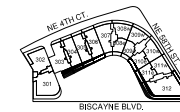
UNIT '308e'  
FLOOR PLAN  
(LEVELS 03-06)



Type I (west)  
 Levels 3 – 6  
 2 bed | 2.5 baths  
 1,698 SF



BOULEVARD 57



KEY PLAN - N.T.S.

UNIT '309w'  
 FLOOR PLAN  
 (LEVELS 03-06)



All floor plans and development plans are subject to change. The sketches, renderings, graphic materials, plans, specifications, terms, conditions and statements contained in these drawings are proposed and conceptual only and do not and will not necessarily reflect the final plans and specifications for the development. Further, Developer reserves the right to modify, revise or withdraw any or all the same in its sole discretion and without prior notice.

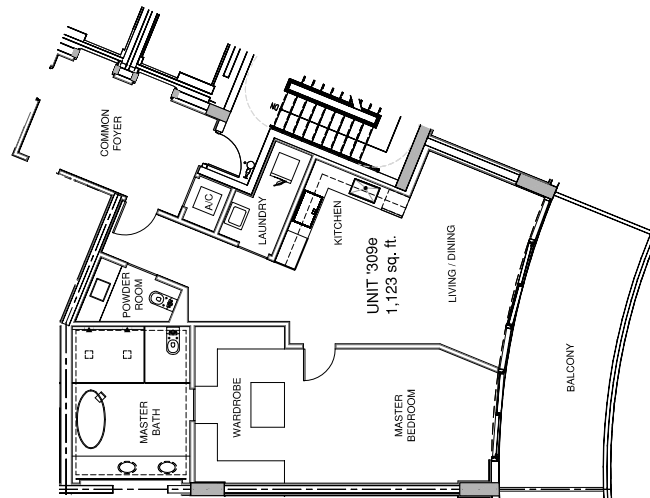
Type I (east)  
Levels 3 – 6  
1 bed | 1.5 baths  
1,123 SF



BOULEVARD 57



KEY PLAN - N.T.S.

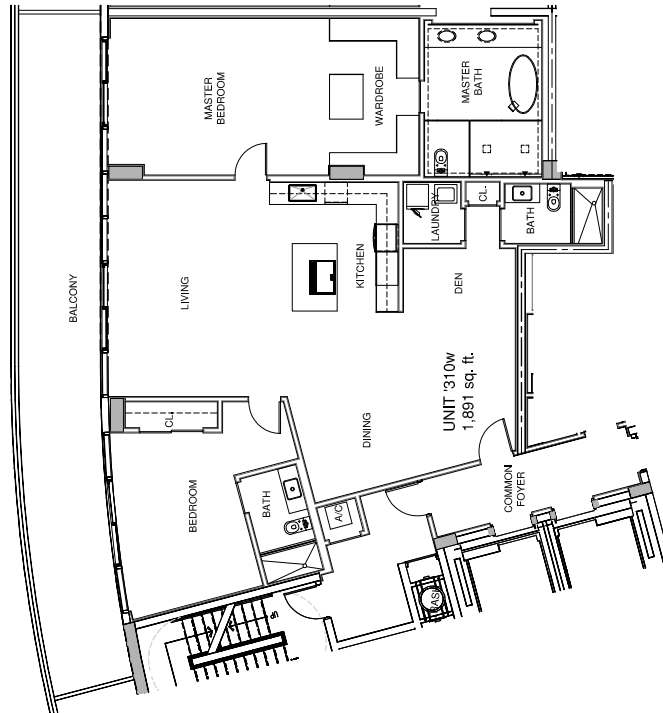


UNIT '309e'  
FLOOR PLAN  
(LEVELS 03-06)

10'

All floor plans and development plans are subject to change. The sketches, renderings, graphic materials, plans, specifications, terms, conditions and statements contained in these drawings are proposed and conceptual only and do not and will not necessarily reflect the final plans and specifications for the development. Further, Developer reserves the right to modify, revise or withdraw any or all the same in his sole discretion and without prior notice.

Type J (west)  
 Level 3 – 6  
 2 bed | Den | 3 baths  
 1,891 SF



KEY PLAN - N.T.S.

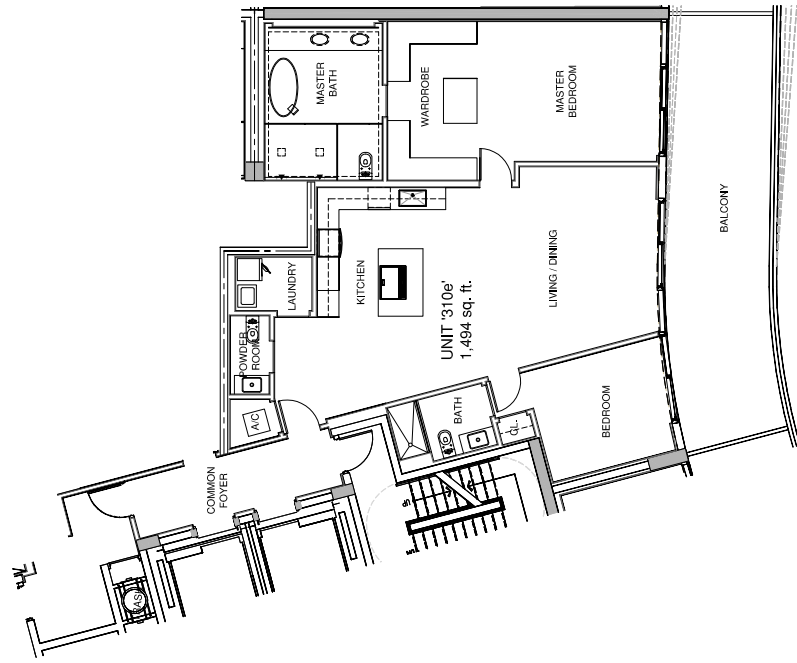
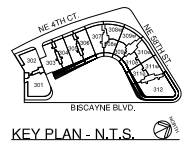
UNIT '310w'  
 FLOOR PLAN  
 (LEVEL 03)

NOTE:  
 UNITS VARY PER LEVEL. REFER TO  
 UNIT MATRIX FOR AREAS.



All floor plans and development plans are subject to change. The sketches, renderings, graphic materials, plans, specifications, terms, conditions and statements contained in these drawings are proposed and conceptual only and do not and will not necessarily reflect the final plans and specifications for the development. Further, Developer reserves the right to modify, revise or withdraw any or all the same in his sole discretion and without prior notice.

Type J (east)  
 Level 3 – 6  
 2 bed | 2.5 baths  
 1,494 SF – 1,506 SF



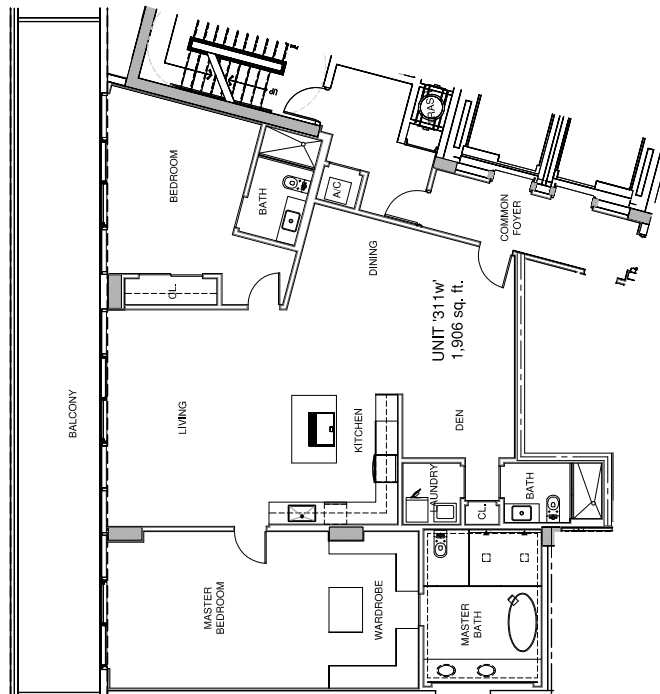
UNIT '310e'  
 FLOOR PLAN  
 (LEVEL 03)

NOTE:  
 UNITS VARY PER LEVEL. REFER TO  
 UNIT MATRIX FOR AREAS.



All floor plans and development plans are subject to change. The sketches, renderings, graphic materials, plans, specifications, terms, conditions and statements contained in these drawings are proposed and conceptual only and do not and will not necessarily reflect the final plans and specifications for the development. Further, Developer reserves the right to modify, revise or withdraw any or all the same in his sole discretion and without prior notice.

Type K (west)  
 Levels 3 – 6  
 2 bed | Den | 3 baths  
 1,906 SF



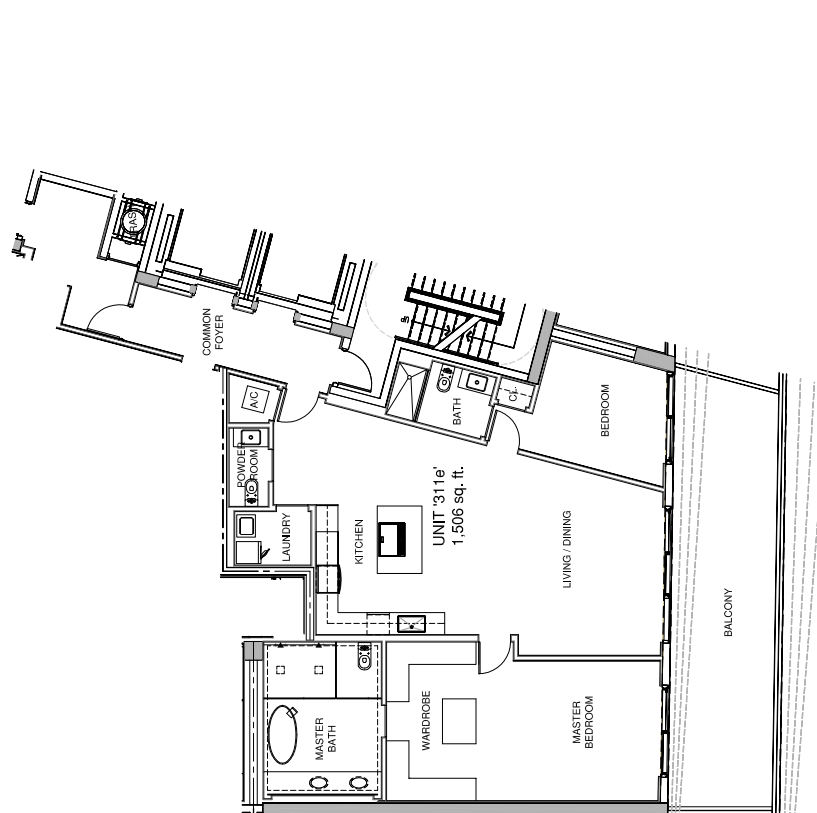
UNIT '311w'  
 FLOOR PLAN  
 (LEVEL 03)

NOTE:  
 UNITS VARY PER LEVEL. REFER TO  
 UNIT MATRIX FOR AREAS.



All floor plans and development plans are subject to change. The sketches, renderings, graphic materials, plans, specifications, terms, conditions and statements contained in these drawings are proposed and conceptual only and do not and will not necessarily reflect the final plans and specifications for the development. Further, Developer reserves the right to modify, revise or withdraw any or all the same in his sole discretion and without prior notice.

Type K (east)  
 Levels 3 – 6  
 2 bed | 2.5 baths  
 1,506 SF - 1,585 SF



**UNIT '311e'**  
**FLOOR PLAN**  
 (LEVEL 03)

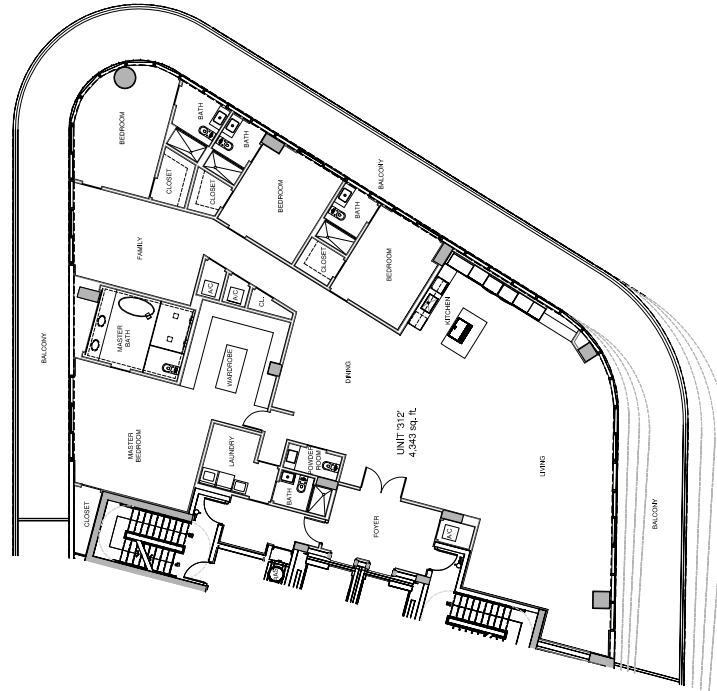
**NOTE:**  
 UNITS VARY PER LEVEL. REFER TO  
 UNIT MATRIX FOR AREAS.



All floor plans and development plans are subject to change. The sketches, renderings, graphic materials, plans, specifications, terms, conditions and statements contained in these drawings are proposed and conceptual only and do not and will not necessarily reflect the final plans and specifications for the development. Further, Developer reserves the right to modify, revise or withdraw any or all the same in his sole discretion and without prior notice.



Type L  
Levels 3 – 6  
4 bed | Family | 5.5 baths  
4,343 SF – 4,518 SF



KEY PLAN - N.T.S.

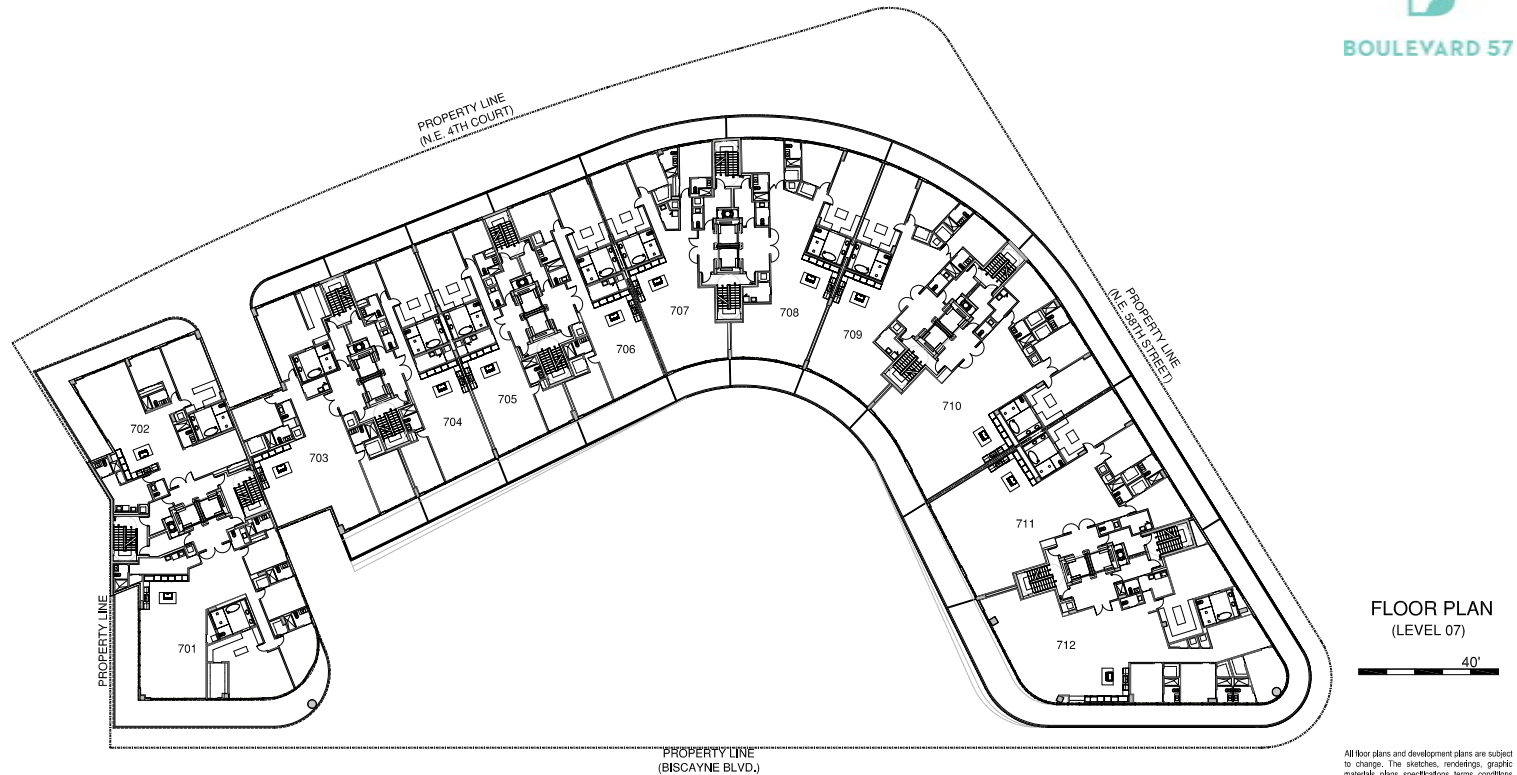
**UNIT '312'  
FLOOR PLAN  
(LEVEL 03)**

NOTE:  
UNITS VARY PER LEVEL. REFER TO  
UNIT MATRIX FOR AREAS.



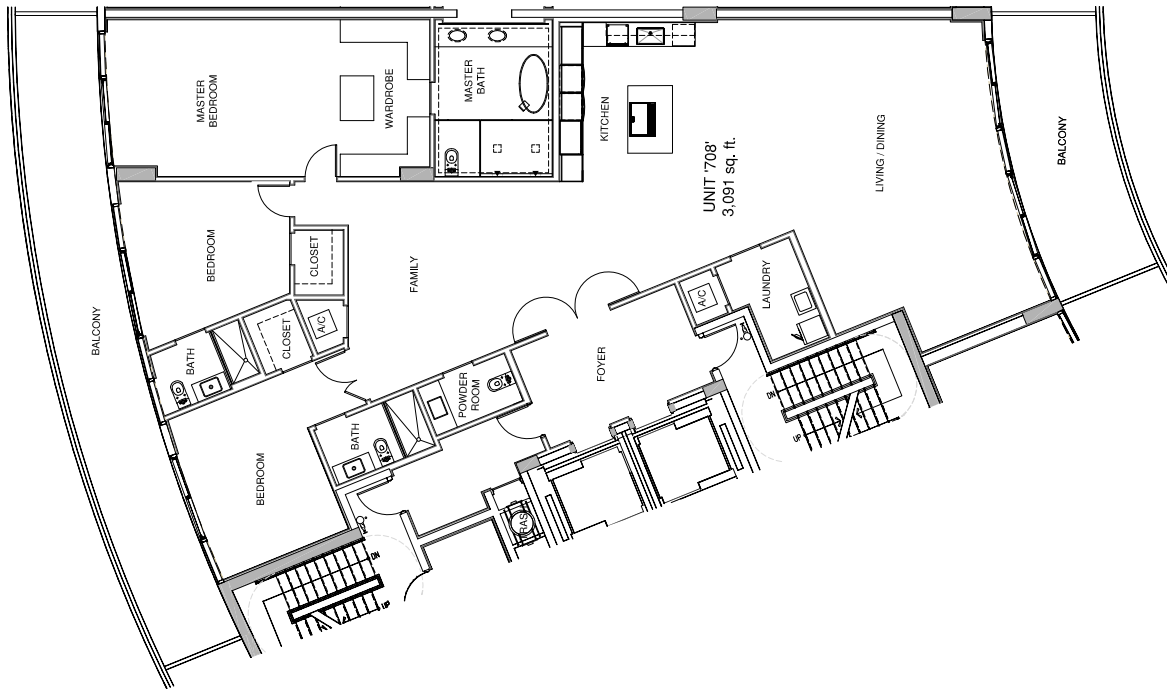
All floor plans and development plans are subject to change. The sketches, renderings, graphic materials, plans, specifications, terms, conditions and statements contained in these drawings are proposed and conceptual only and do not and will not necessarily reflect the final plans and specifications for the development. Further, Developer reserves the right to modify, revise or withdraw any or all the same in his sole discretion and without prior notice.

# Floor Plan Level 7 Lower PH



All floor plans and development plans are subject to change. The sketches, renderings, graphic materials, plans, specifications, terms, conditions and statements contained in these drawings are proposed and conceptual only and do not and will not necessarily reflect the final plans and specifications for the development. Further, Developer reserves the right to modify, revise or withdraw any or all the same in his sole discretion and without prior notice.

Unit H  
 Level 7  
 3 bed | 3.5 baths  
 3,091 SF



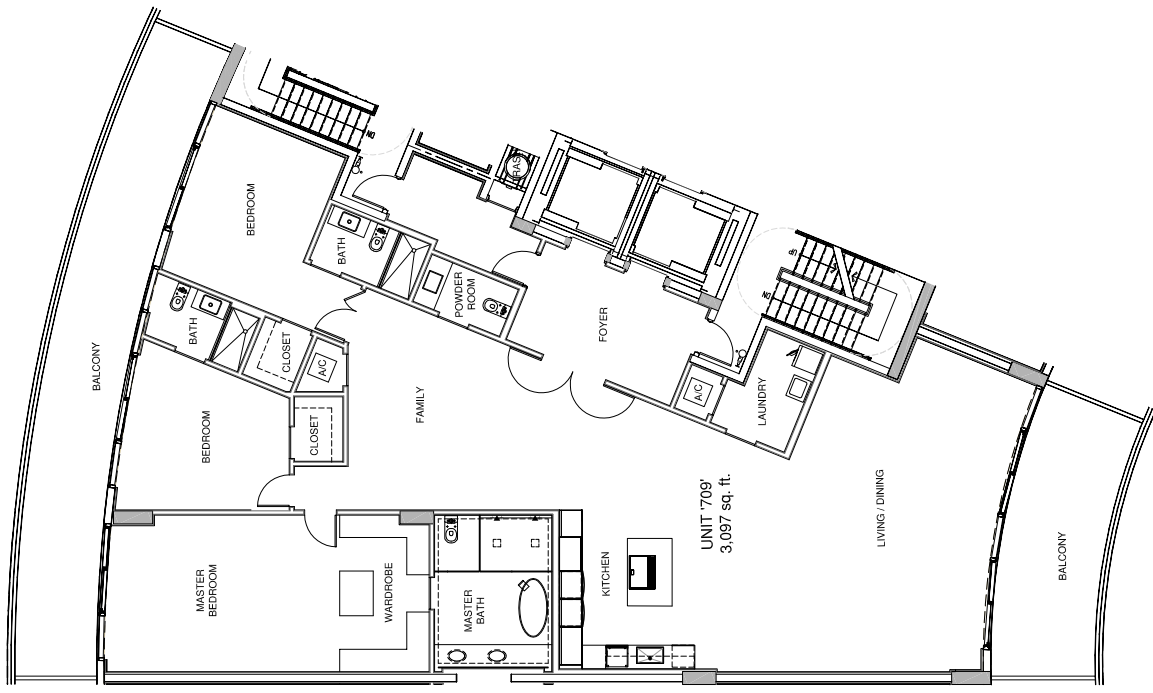
UNIT '708'  
 FLOOR PLAN  
 (LEVEL 07)

NOTE:  
 UNITS VARY PER LEVEL. REFER TO  
 UNIT MATRIX FOR AREAS.



All floor plans and development plans are subject to change. The sketches, renderings, graphic materials, plans, specifications, terms, conditions and statements contained in these drawings are proposed and conceptual only and do not and will not necessarily reflect the final plans and specifications for the development. Further, Developer reserves the right to modify, revise or withdraw any or all the same in his sole discretion and without prior notice.

Type I  
 Level 7  
 3bed | 3.5 baths  
 3,097 SF



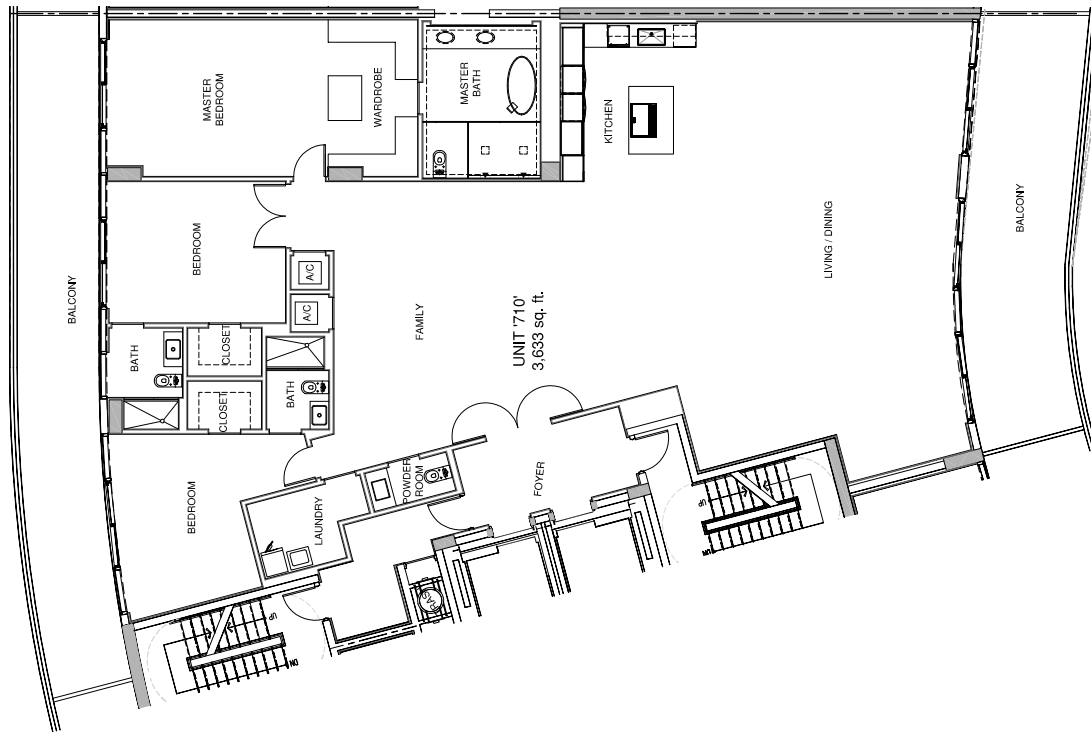
UNIT '709'  
 FLOOR PLAN  
 (LEVEL 07)

NOTE:  
 UNITS VARY PER LEVEL. REFER TO  
 UNIT MATRIX FOR AREAS.



All floor plans and development plans are subject to change. The sketches, renderings, graphic materials, plans, specifications, terms, conditions and statements contained in these drawings are proposed and conceptual only and do not and will not necessarily reflect the final plans and specifications for the development. Further, Developer reserves the right to modify, revise or withdraw any or all the same in his sole discretion and without prior notice.

Type J  
 Level 7  
 3 bed | 3.5 baths  
 3,633 SF



UNIT '710'  
 FLOOR PLAN  
 (LEVEL 07)

NOTE:  
 UNITS VARY PER LEVEL. REFER TO  
 UNIT MATRIX FOR AREAS.

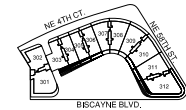


All floor plans and development plans are subject to change. The sketches, renderings, graphic materials, plans, specifications, terms, conditions and statements contained in these drawings are proposed and conceptual only and do not and will not necessarily reflect the final plans and specifications for the development. Further, Developer reserves the right to modify, revise or withdraw any or all the same in his sole discretion and without prior notice.

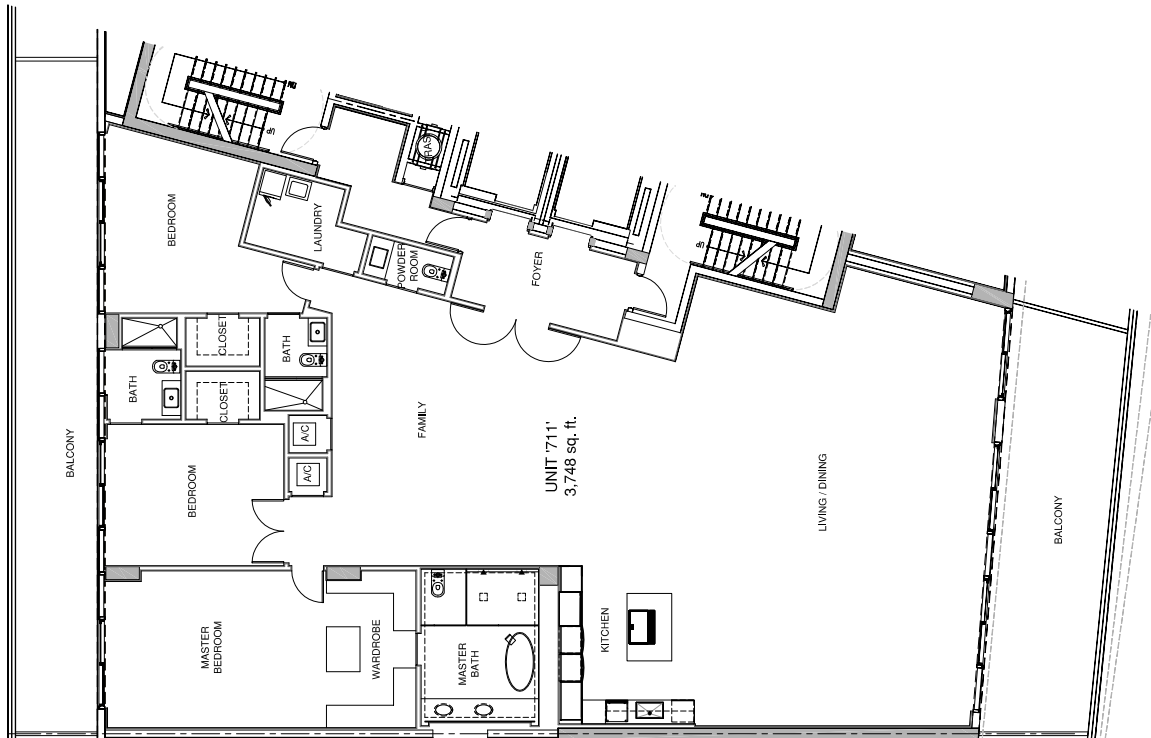
Type K  
 Level 7  
 3 bed | 3.5 baths  
 3,748 SF



BOULEVARD 57



KEY PLAN - N.T.S.



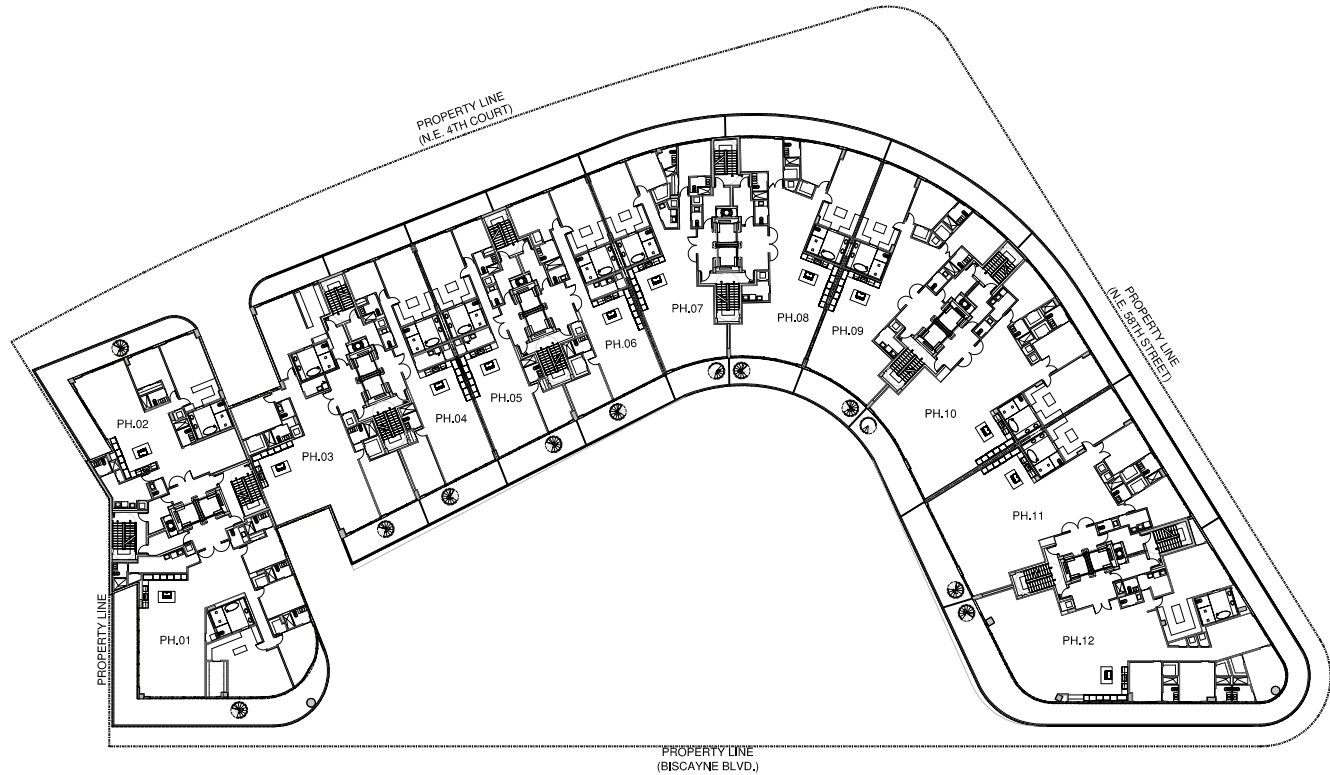
UNIT '711'  
 FLOOR PLAN  
 (LEVEL 07)

NOTE:  
 UNITS VARY PER LEVEL. REFER TO  
 UNIT MATRIX FOR AREAS.



All floor plans and development plans are subject to change. The sketches, renderings, graphic materials, plans, specifications, terms, conditions and statements contained in these drawings are proposed and conceptual only and do not and will not necessarily reflect the final plans and specifications for the development. Further, Developer reserves the right to modify, revise or withdraw any or all the same in his sole discretion and without prior notice.

# Floor Plan Level 8 PH

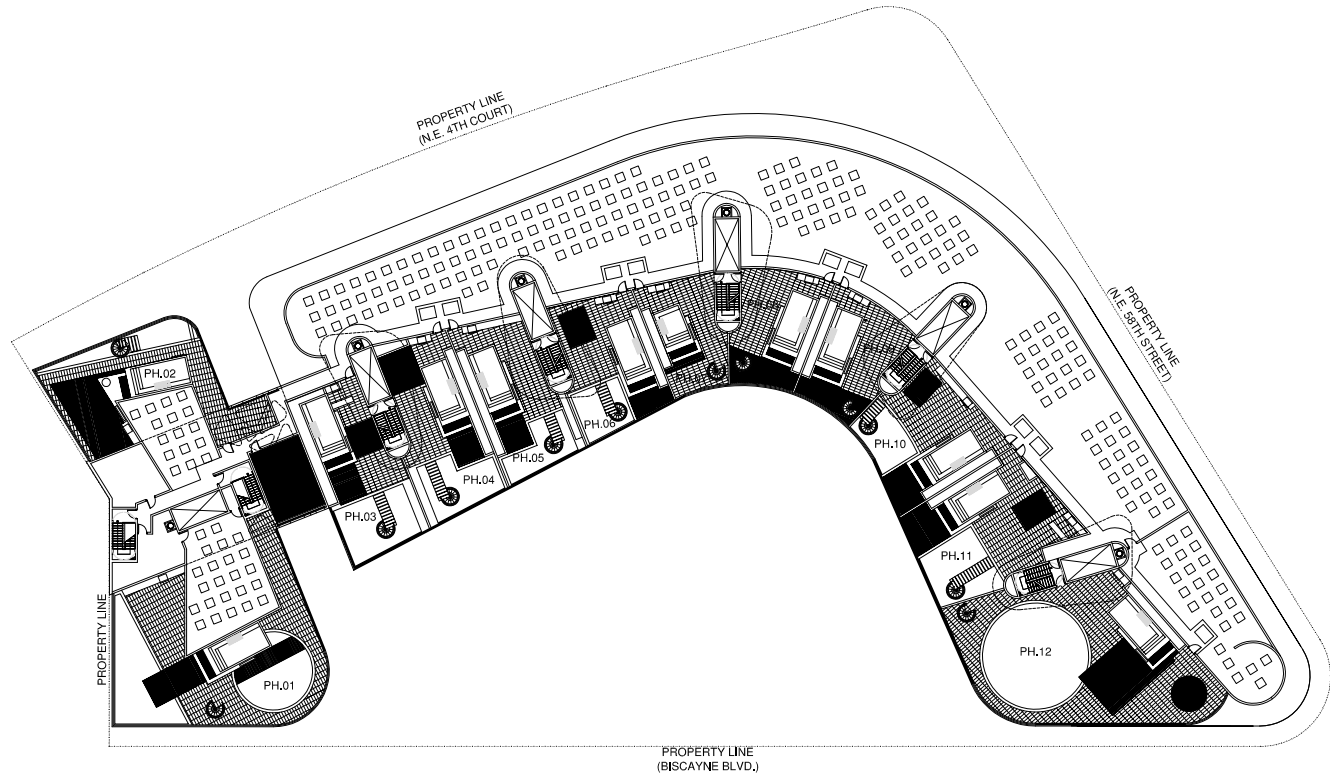


FLOOR PLAN  
(LEVEL 08 - PH. UNITS)



All floor plans and development plans are subject to change. The sketches, renderings, graphic materials, plans, specifications, terms, conditions and statements contained in these drawings are proposed and conceptual only and do not and will not necessarily reflect the final plans and specifications for the development. Further, Developer reserves the right to modify, revise or withdraw any or all the same in his sole discretion and without prior notice.

# PH Private Rooftop Terraces



FLOOR PLAN  
(PH. ROOF DECK)  
40'

All floor plans and development plans are subject to change. The sketches, renderings, graphic materials, plans, specifications, terms, conditions and statements contained in these drawings are proposed and conceptual only and do not and will not necessarily reflect the final plans and specifications for the development. Further, Developer reserves the right to modify, revise or withdraw any or all the same in his sole discretion and without prior notice.