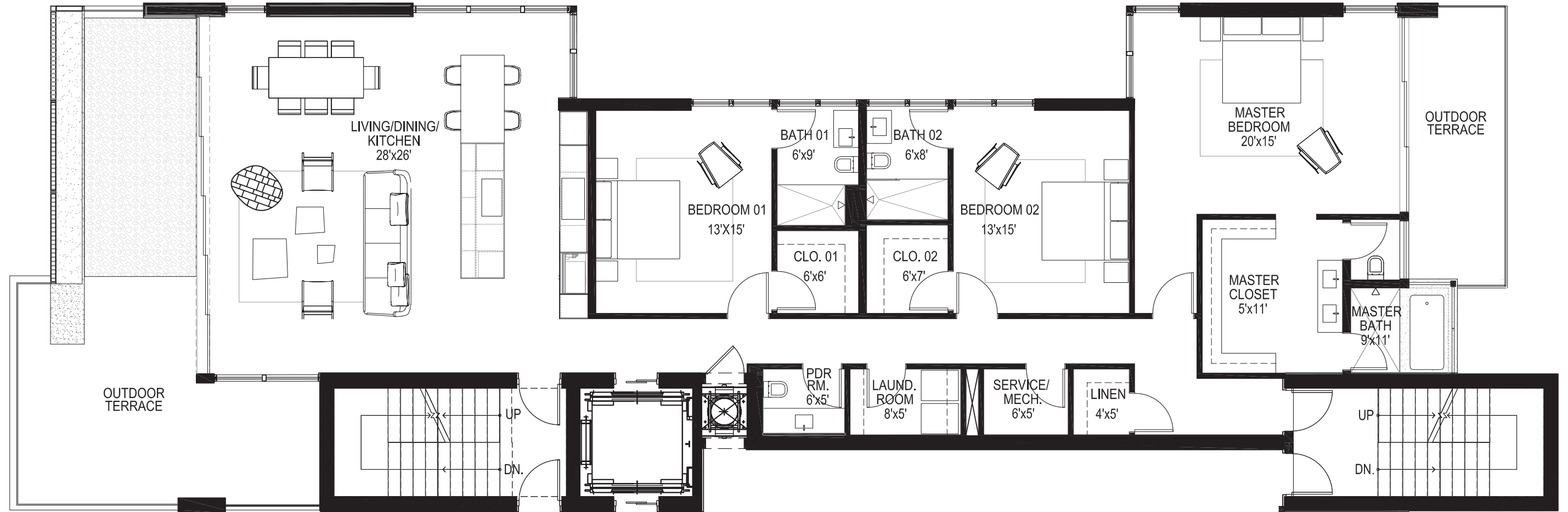


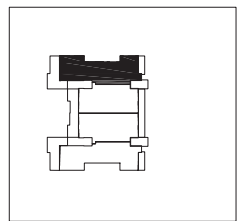
LOUVER HOUSE

UNIT 201
UNIT 301
UNIT PH-1



3 BEDROOMS, 3.5 BATHS

UNIT 201	INTERIOR 2,413 SF	EXTERIOR 702 SF	TOTAL 3,115 SF
UNIT 301	INTERIOR 2,432 SF	EXTERIOR 702 SF	TOTAL 3,134 SF
UNIT PH-1	INTERIOR 2,432 SF	EXTERIOR 702 SF	TOTAL 3,134 SF
			ROOF TERRACE 684 SF



Stated dimensions are measured to the exterior boundaries of the exterior walls and the centerline of interior demising walls and in fact vary from the dimensions that would be determined by using the description and definition of the "Unit" set forth in the Declaration (which generally only includes the interior airspace between the perimeter walls and excludes interior structural components). For your reference, the area of the Unit, determined in accordance with those defined unit boundaries, is set forth in Exhibit "3" to the Declaration. Note that measurements of rooms set forth on this floor plan are generally taken at the greatest points of each given room (as if the room were a perfect rectangle), without regard for any cutouts. Accordingly, the area of the actual room will typically be smaller than the product obtained by multiplying the stated length times width. All dimensions are approximate and may vary with actual construction, and all floor plans and development plans are subject to change.

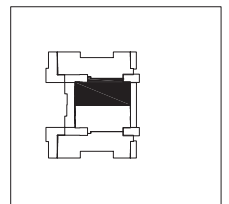
LOUVER HOUSE

UNIT 202
 UNIT 302
 UNIT PH-2



3 BEDROOMS, 3.5 BATHS

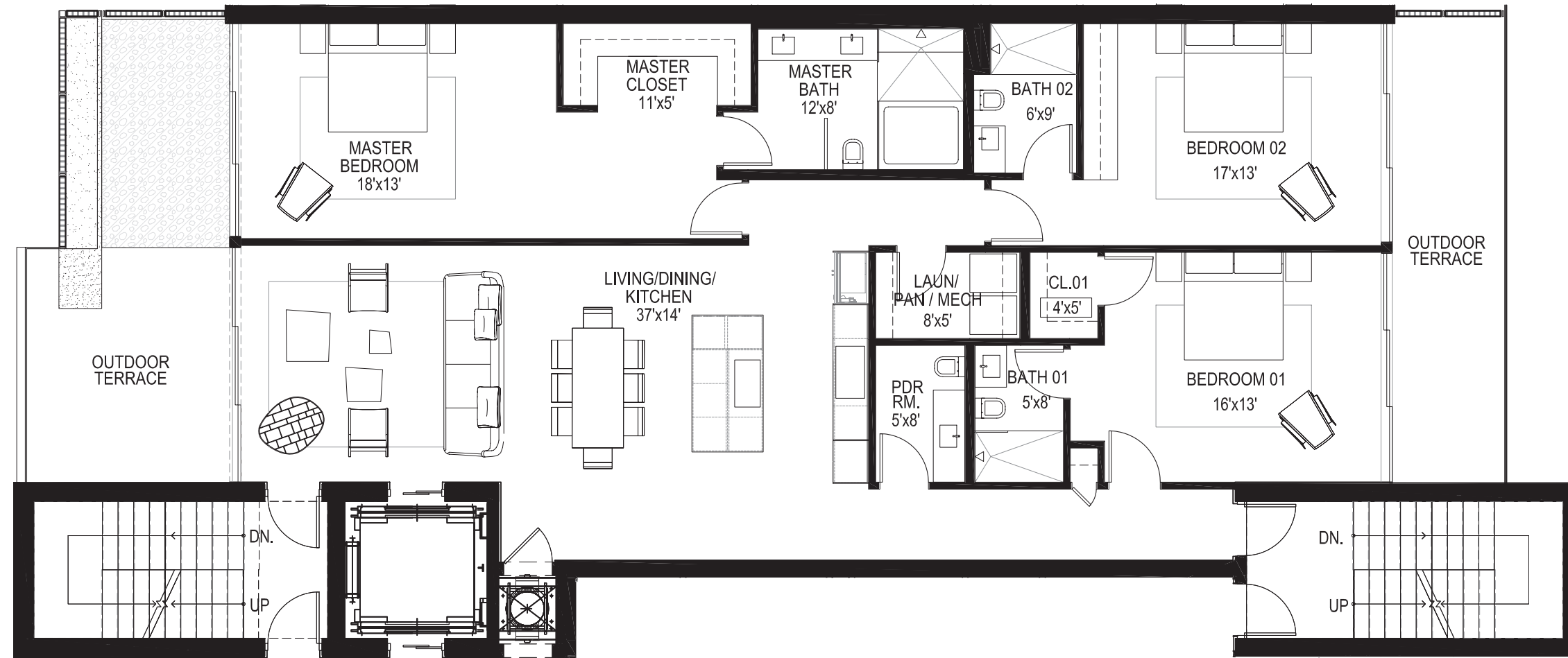
UNIT 202	INTERIOR 2,088 SF	EXTERIOR 496 SF	TOTAL 2,584 SF
UNIT 302	INTERIOR 2,107 SF	EXTERIOR 496 SF	TOTAL 2,603 SF
UNIT PH-2	INTERIOR 2,107 SF	EXTERIOR 496 SF	TOTAL 2,603 SF



Stated dimensions are measured to the exterior boundaries of the exterior walls and the centerline of interior demising walls and in fact vary from the dimensions that would be determined by using the description and definition of the "Unit" set forth in the Declaration (which generally only includes the interior airspace between the perimeter walls and excludes interior structural components). For your reference, the area of the Unit, determined in accordance with those defined unit boundaries, is set forth in Exhibit "3" to the Declaration. Note that measurements of rooms set forth on this floor plan are generally taken at the greatest points of each given room (as if the room were a perfect rectangle), without regard for any cutouts. Accordingly, the area of the actual room will typically be smaller than the product obtained by multiplying the stated length times width. All dimensions are approximate and may vary with actual construction, and all floor plans and development plans are subject to change.

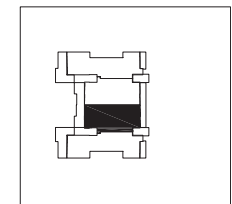
LOUVER HOUSE

UNIT 203
UNIT 303
UNIT PH-3



3 BEDROOMS, 3.5 BATHS

UNIT 203	INTERIOR 2,088 SF	EXTERIOR 512 SF	TOTAL 2,600 SF
UNIT 303	INTERIOR 2,107 SF	EXTERIOR 512 SF	TOTAL 2,619 SF
UNIT PH-3	INTERIOR 2,107 SF	EXTERIOR 512 SF	TOTAL 2,619 SF



Stated dimensions are measured to the exterior boundaries of the exterior walls and the centerline of interior demising walls and in fact vary from the dimensions that would be determined by using the description and definition of the "Unit" set forth in the Declaration (which generally only includes the interior airspace between the perimeter walls and excludes interior structural components). For your reference, the area of the Unit, determined in accordance with those defined unit boundaries, is set forth in Exhibit "3" to the Declaration. Note that measurements of rooms set forth on this floor plan are generally taken at the greatest points of each given room (as if the room were a perfect rectangle), without regard for any cutouts. Accordingly, the area of the actual room will typically be smaller than the product obtained by multiplying the stated length times width. All dimensions are approximate and may vary with actual construction, and all floor plans and development plans are subject to change.

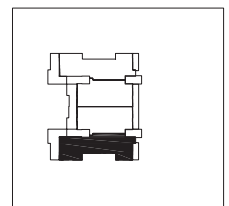
LOUVER HOUSE

UNIT 204
UNIT 304
UNIT PH-4



3 BEDROOMS, 3.5 BATHS

UNIT 204	INTERIOR 2,356 SF	EXTERIOR 793 SF	TOTAL 3,149 SF
UNIT 304	INTERIOR 2,375 SF	EXTERIOR 793 SF	TOTAL 3,168 SF
UNIT PH-4	INTERIOR 2,375 SF	EXTERIOR 793 SF	TOTAL 3,168 SF
			ROOF TERRACE 684 SF



Stated dimensions are measured to the exterior boundaries of the exterior walls and the centerline of interior demising walls and in fact vary from the dimensions that would be determined by using the description and definition of the "Unit" set forth in the Declaration (which generally only includes the interior airspace between the perimeter walls and excludes interior structural components). For your reference, the area of the Unit, determined in accordance with those defined unit boundaries, is set forth in Exhibit "3" to the Declaration. Note that measurements of rooms set forth on this floor plan are generally taken at the greatest points of each given room (as if the room were a perfect rectangle), without regard for any cutouts. Accordingly, the area of the actual room will typically be smaller than the product obtained by multiplying the stated length times width. All dimensions are approximate and may vary with actual construction, and all floor plans and development plans are subject to change.