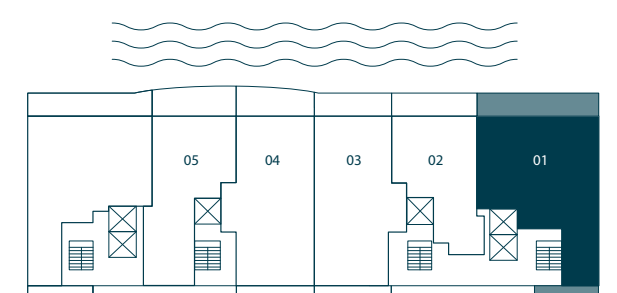


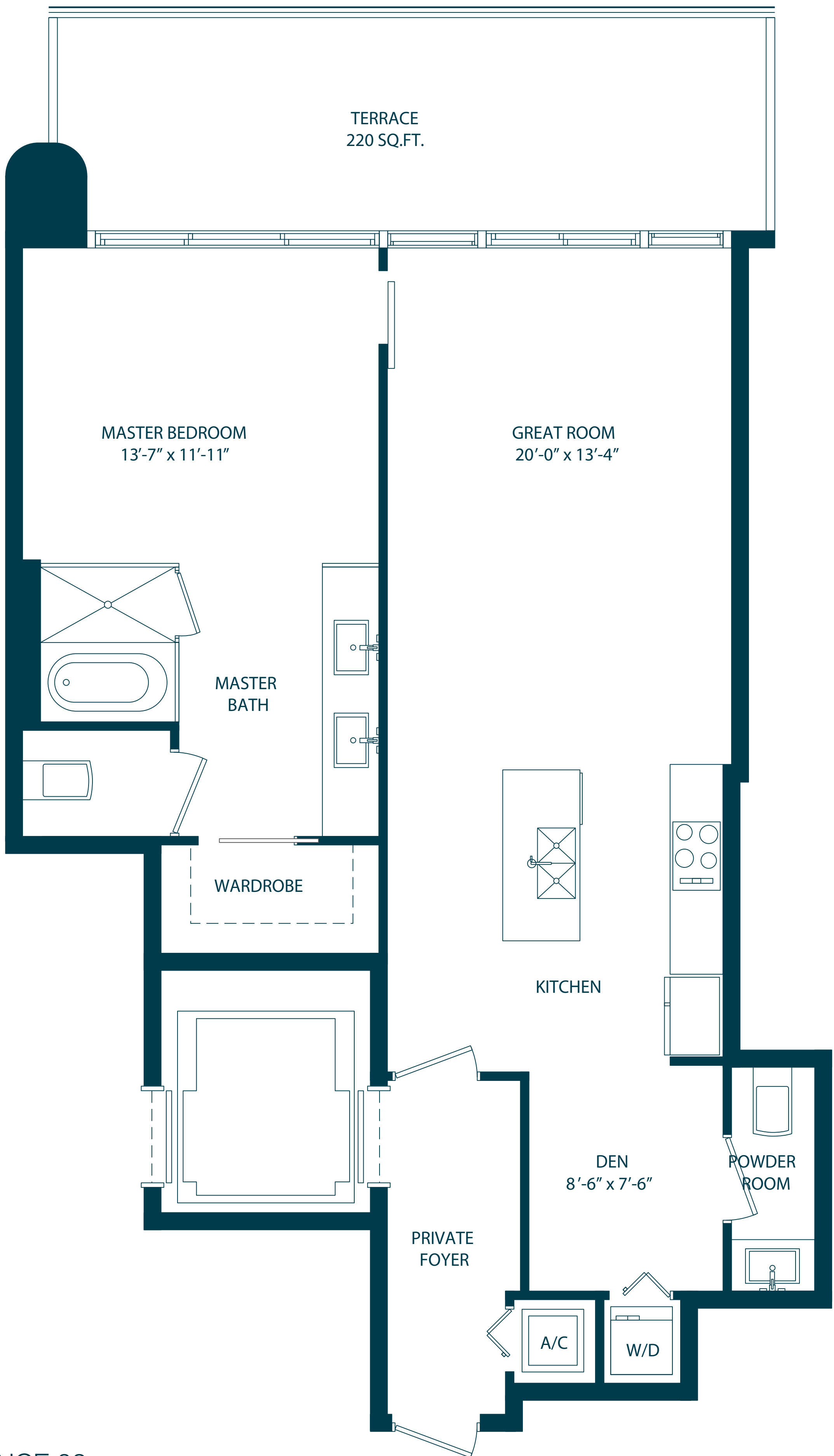


RESIDENCE 01
3 BEDROOMS / 3 1/2 BATHS
 LEVELS 12th TO 49th

A/C INTERIOR AREA	1,865 SQ.FT.	173.26 SQ.M.
TERRACE AREA	454 SQ.FT.	42.18 SQ.M.
TOTAL RESIDENCE	2,319 SQ.FT.	142.60 SQ.M.

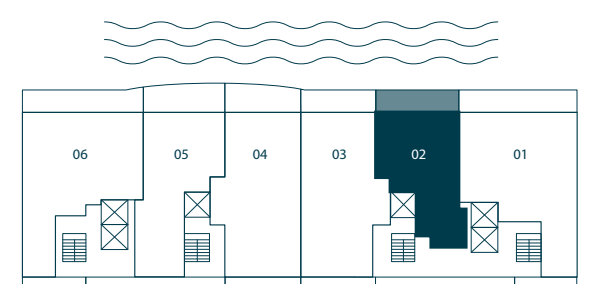


Stated dimensions are measured to the exterior boundaries of the exterior walls and the centerline of interior demising walls and in fact vary from the dimensions that would be determined by using the description and definition of the "Unit" set forth in the Declaration (which generally only includes the interior airspace between the perimeter walls and excludes interior structural components). For your reference, the area of the Unit, determined in accordance with those defined unit boundaries, is + or - 1,541 sq. ft. for unit 01. Note that measurements of rooms set forth on this floor plan are generally taken at the greatest points of each given room (as if the room were a perfect rectangle), without regard for any cutouts. Accordingly, the area of the actual room will typically be smaller than the product obtained by multiplying the stated length times width. All dimensions are approximate and may vary with actual construction, and all floor plans and development plans are subject to change.

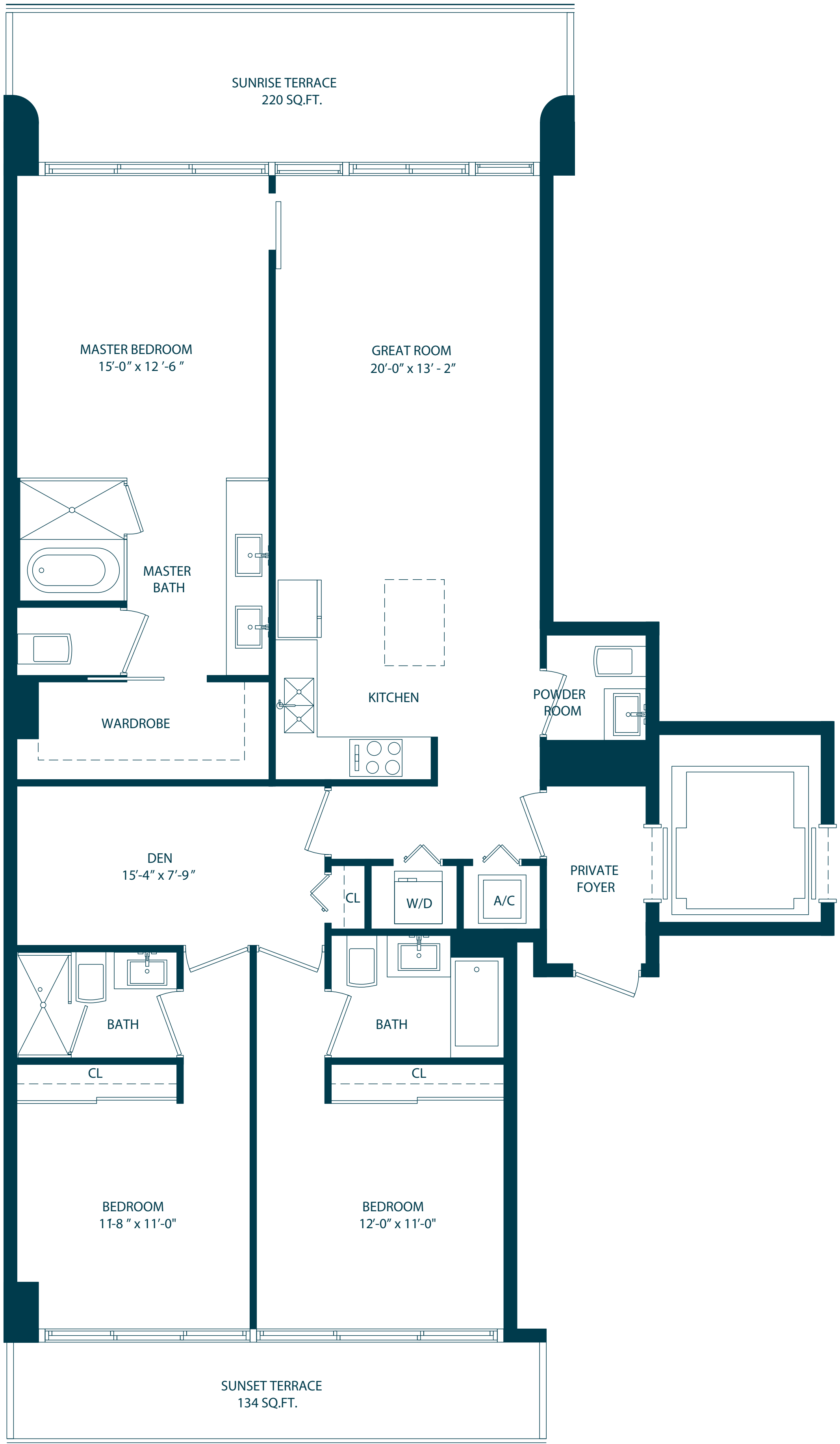


RESIDENCE 02
1 BEDROOM + DEN / 1 1/2 BATHS
 LEVELS 12th TO 49th

A/C INTERIOR AREA	1,124 SQ.FT.	104.42 SQ.M.
TERRACE AREA	220 SQ.FT.	20.43 SQ.M.
TOTAL RESIDENCE	1,344 SQ.FT.	124.85 SQ.M.

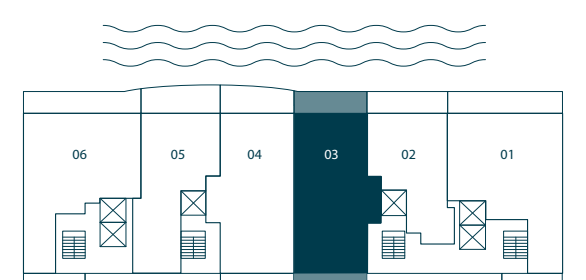


Stated dimensions are measured to the exterior boundaries of the exterior walls and the centerline of interior demising walls and in fact vary from the dimensions that would be determined by using the description and definition of the "Unit" set forth in the Declaration (which generally only includes the interior airspace between the perimeter walls and excludes interior structural components). For your reference, the area of the Unit, determined in accordance with those defined unit boundaries, is + or - 901 sq. ft. for unit 02. Note that measurements of rooms set forth on this floor plan are generally taken at the greatest points of each given room (as if the room were a perfect rectangle), without regard for any cutouts. Accordingly, the area of the actual room will typically be smaller than the product obtained by multiplying the stated length times width. All dimensions are approximate and may vary with actual construction, and all floor plans and development plans are subject to change.

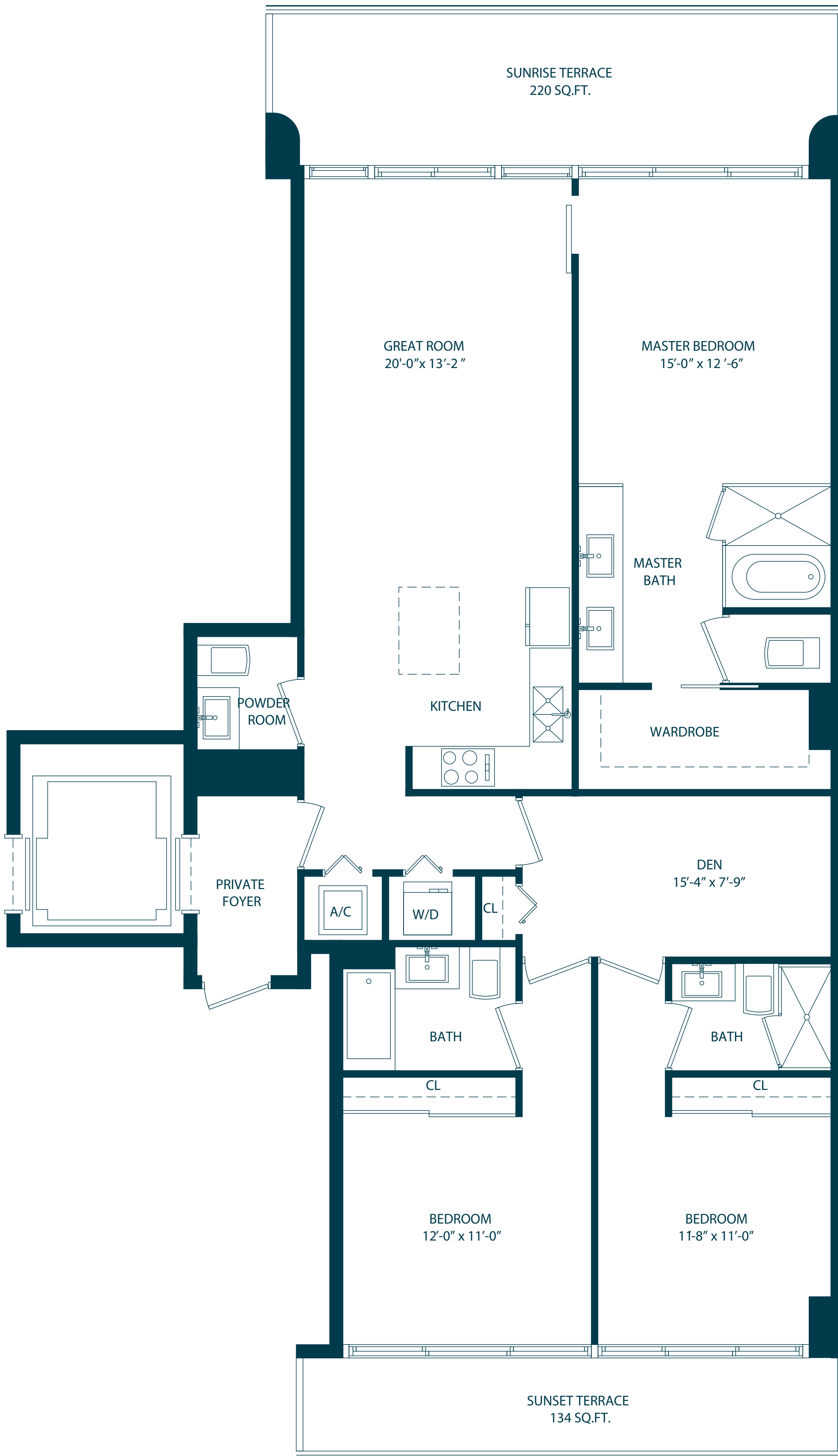


RESIDENCE 03
3 BEDROOMS + DEN / 3 1/2 BATHS
 LEVELS 12th TO 49th

A/C INTERIOR AREA	1,681 SQ.FT.	156.17 SQ.M.
TERRACE AREA	354 SQ.FT.	32.88 SQ.M.
TOTAL RESIDENCE	2,035 SQ.FT.	189.06 SQ.M.

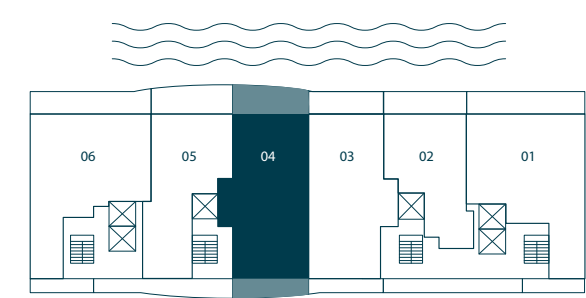


Stated dimensions are measured to the exterior boundaries of the exterior walls and the centerline of interior demising walls and in fact vary from the dimensions that would be determined by using the description and definition of the "Unit" set forth in the Declaration (which generally only includes the interior airspace between the perimeter walls and excludes interior structural components). For your reference, the area of the Unit, determined in accordance with those defined unit boundaries, is + or - 1,441 sq. ft. for unit 03. Note that measurements of rooms set forth on this floor plan are generally taken at the greatest points of each given room (as if the room were a perfect rectangle), without regard for any cutouts. Accordingly, the area of the actual room will typically be smaller than the product obtained by multiplying the stated length times width. All dimensions are approximate and may vary with actual construction, and all floor plans and development plans are subject to change.

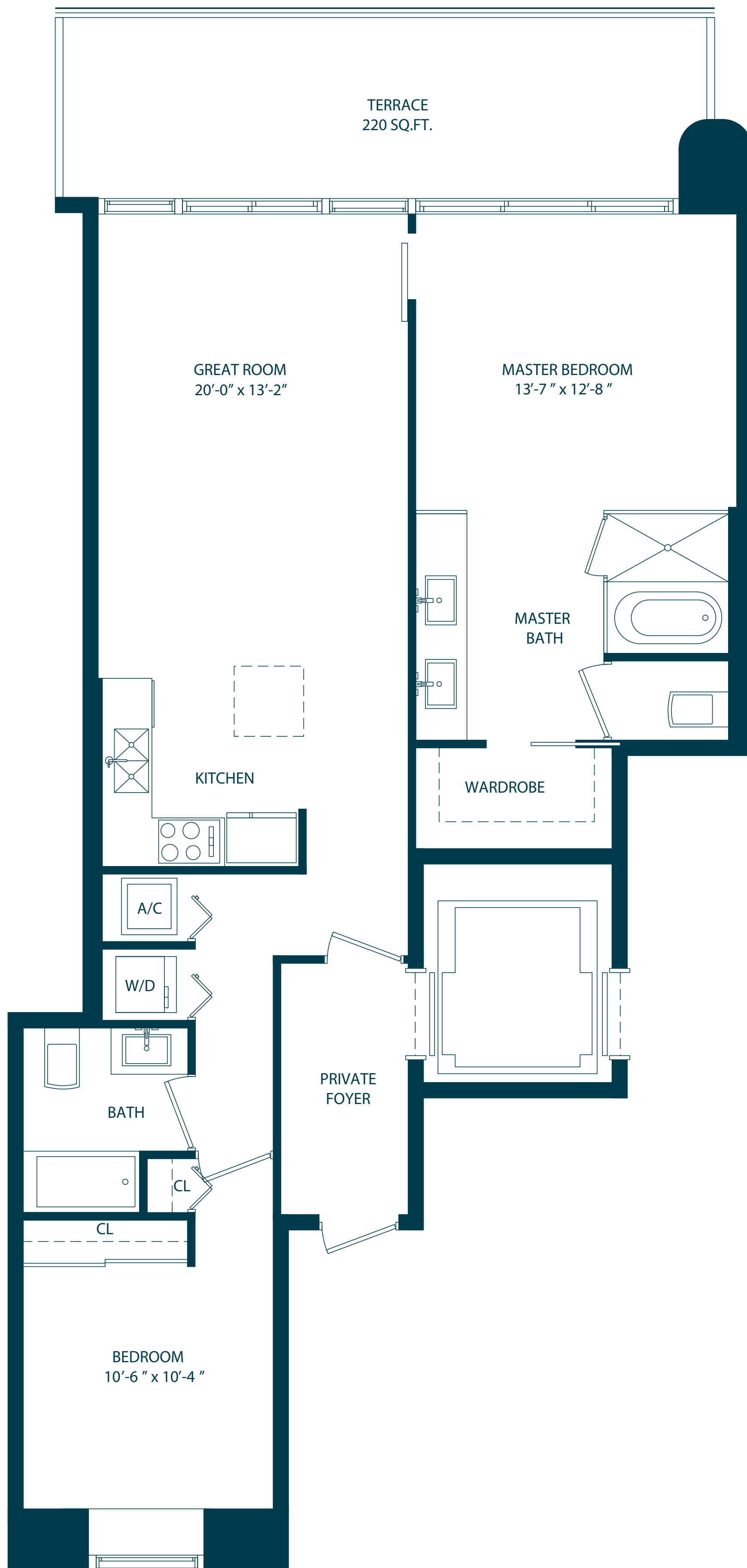


RESIDENCE 04
3 BEDROOMS + DEN / 3 1/2 BATHS
 LEVELS 12th TO 49th

A/C INTERIOR AREA	1,680 SQ.FT.	156.08 SQ.M.
TERRACE AREA	354 SQ.FT.	32.88 SQ.M.
TOTAL RESIDENCE	2,034 SQ.FT.	188.96 SQ.M.

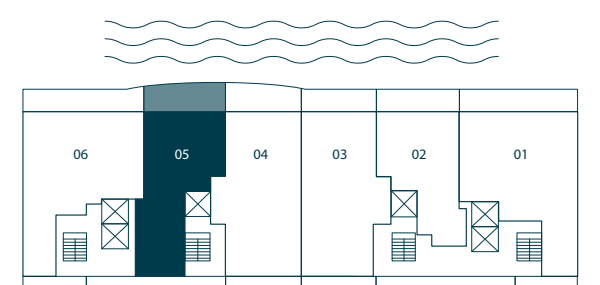


Stated dimensions are measured to the exterior boundaries of the exterior walls and the centerline of interior demising walls and in fact vary from the dimensions that would be determined by using the description and definition of the "Unit" set forth in the Declaration (which generally only includes the interior airspace between the perimeter walls and excludes interior structural components). For your reference, the area of the Unit, determined in accordance with those defined unit boundaries, is + or - 1,439 sq. ft. for unit 04. Note that measurements of rooms set forth on this floor plan are generally taken at the greatest points of each given room (as if the room were a perfect rectangle), without regard for any cutouts. Accordingly, the area of the actual room will typically be smaller than the product obtained by multiplying the stated length times width. All dimensions are approximate and may vary with actual construction, and all floor plans and development plans are subject to change.

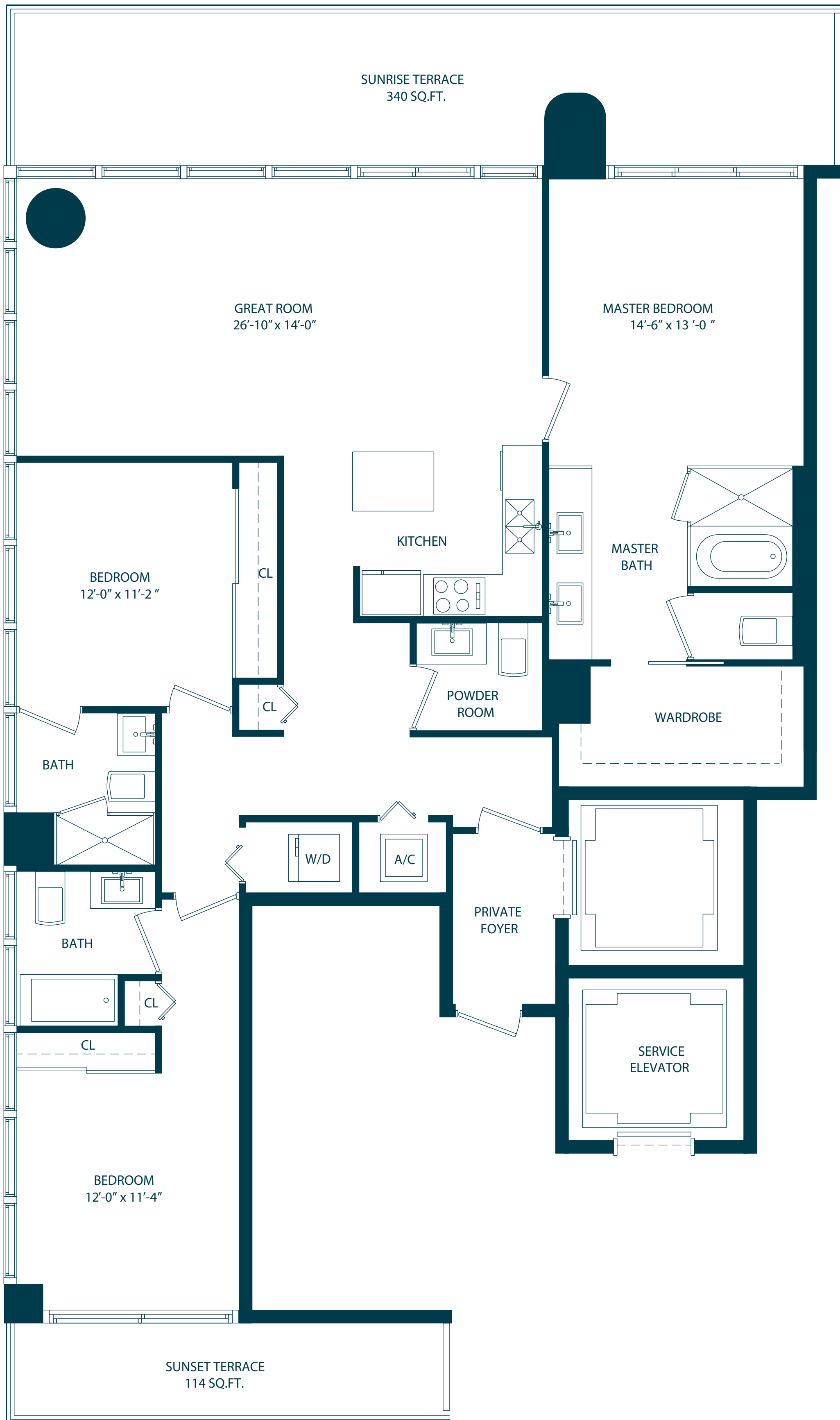


RESIDENCE 05
2 BEDROOMS / 2 BATHS
 LEVELS 12th TO 49th

A/C INTERIOR AREA	1,285 SQ.FT.	119.38 SQ.M.
TERRACE AREA	220 SQ.FT.	20.43 SQ.M.
TOTAL RESIDENCE	1,505 SQ.FT.	139.81 SQ.M.

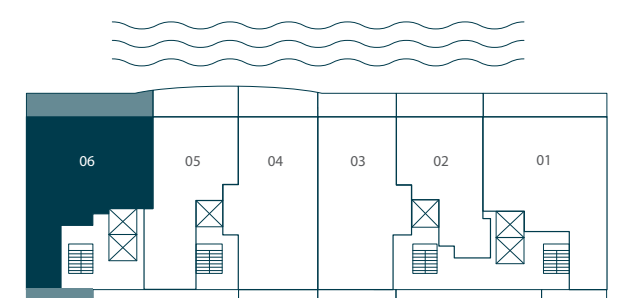


Stated dimensions are measured to the exterior boundaries of the exterior walls and the centerline of interior demising walls and in fact vary from the dimensions that would be determined by using the description and definition of the "Unit" set forth in the Declaration (which generally only includes the interior airspace between the perimeter walls and excludes interior structural components). For your reference, the area of the Unit, determined in accordance with those defined unit boundaries, is + or - 1,041 sq. ft. for unit 05. Note that measurements of rooms set forth on this floor plan are generally taken at the greatest points of each given room (as if the room were a perfect rectangle), without regard for any cutouts. Accordingly, the area of the actual room will typically be smaller than the product obtained by multiplying the stated length times width. All dimensions are approximate and may vary with actual construction, and all floor plans and development plans are subject to change.

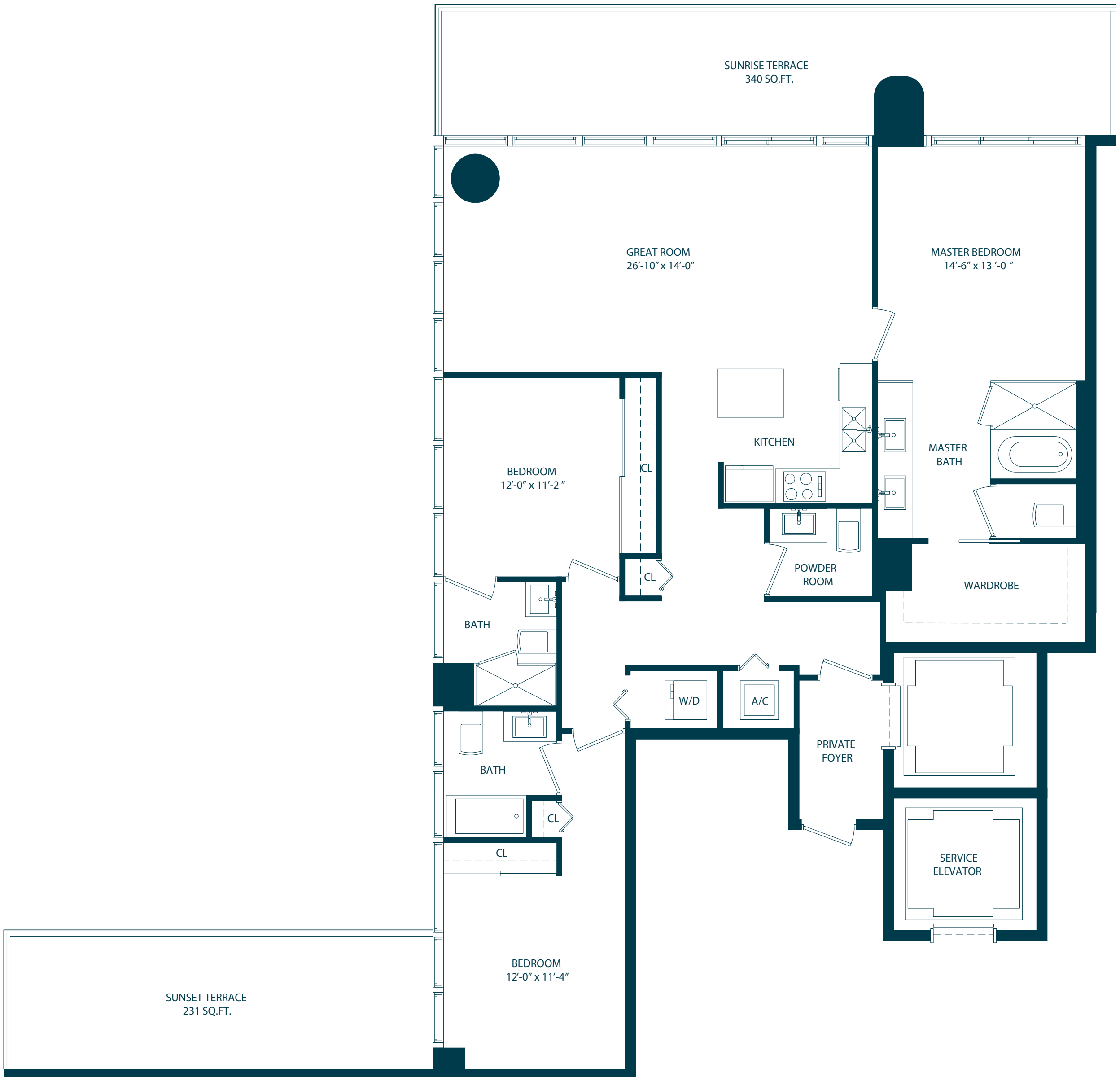


RESIDENCE 06
3 BEDROOMS / 3 1/2 BATHS
 LEVELS 12th TO 49th

A/C INTERIOR AREA	1,873 SQ.FT.	174.01 SQ.M.
TERRACE AREA	454 SQ.FT.	42.17 SQ.M.
TOTAL RESIDENCE	1,524 SQ.FT.	141.58 SQ.M.



Stated dimensions are measured to the exterior boundaries of the exterior walls and the centerline of interior demising walls and in fact vary from the dimensions that would be determined by using the description and definition of the "Unit" set forth in the Declaration (which generally only includes the interior airspace between the perimeter walls and excludes interior structural components). For your reference, the area of the Unit, determined in accordance with those defined unit boundaries, is + or - 1,530 sq. ft. for unit 06. Note that measurements of rooms set forth on this floor plan are generally taken at the greatest points of each given room (as if the room were a perfect rectangle), without regard for any cutouts. Accordingly, the area of the actual room will typically be smaller than the product obtained by multiplying the stated length times width. All dimensions are approximate and may vary with actual construction, and all floor plans and development plans are subject to change.

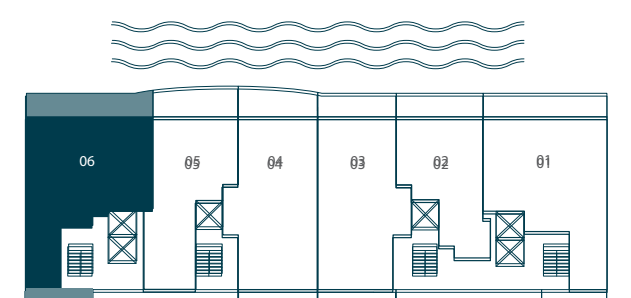


RESIDENCE 06-MOD

3 BEDROOMS / 3 1/2 BATHS

LEVELS 3rd TO 9th

A/C INTERIOR AREA	1,865 SQ.FT.	173.26 SQ.M.
TERRACE AREA	454 SQ.FT.	42.17 SQ.M.
TOTAL RESIDENCE	2,319 SQ.FT.	215.43 SQ.M.



Stated dimensions are measured to the exterior boundaries of the exterior walls and the centerline of interior demising walls and in fact vary from the dimensions that would be determined by using the description and definition of the "Unit" set forth in the Declaration (which generally only includes the interior airspace between the perimeter walls and excludes interior structural components). For your reference, the area of the Unit, determined in accordance with those defined unit boundaries, is + or - 1,530 sq. ft. for unit 06. Note that measurements of rooms set forth on this floor plan are generally taken at the greatest points of each given room (as if the room were a perfect rectangle), without regard for any cutouts. Accordingly, the area of the actual room will typically be smaller than the product obtained by multiplying the stated length times width. All dimensions are approximate and may vary with actual construction, and all floor plans and development plans are subject to change.

ONE PARAISO

BY PIERO LISSONI

PENTHOUSE COLLECTION

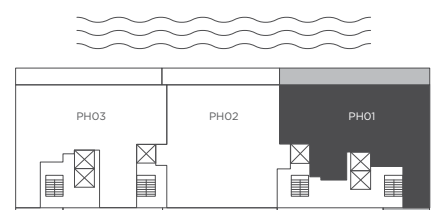


PENTHOUSE 01

4 BEDS / 4 BATHS

LEVELS 50TH TO 52ND

A/C INTERIOR AREA	3,015 SQ. FT.	280.10 SQ. M.
TERRACE AREA	666 SQ. FT.	61.87 SQ. M.
TOTAL RESIDENCE	3,681 SQ. FT.	341.97 SQ. M.

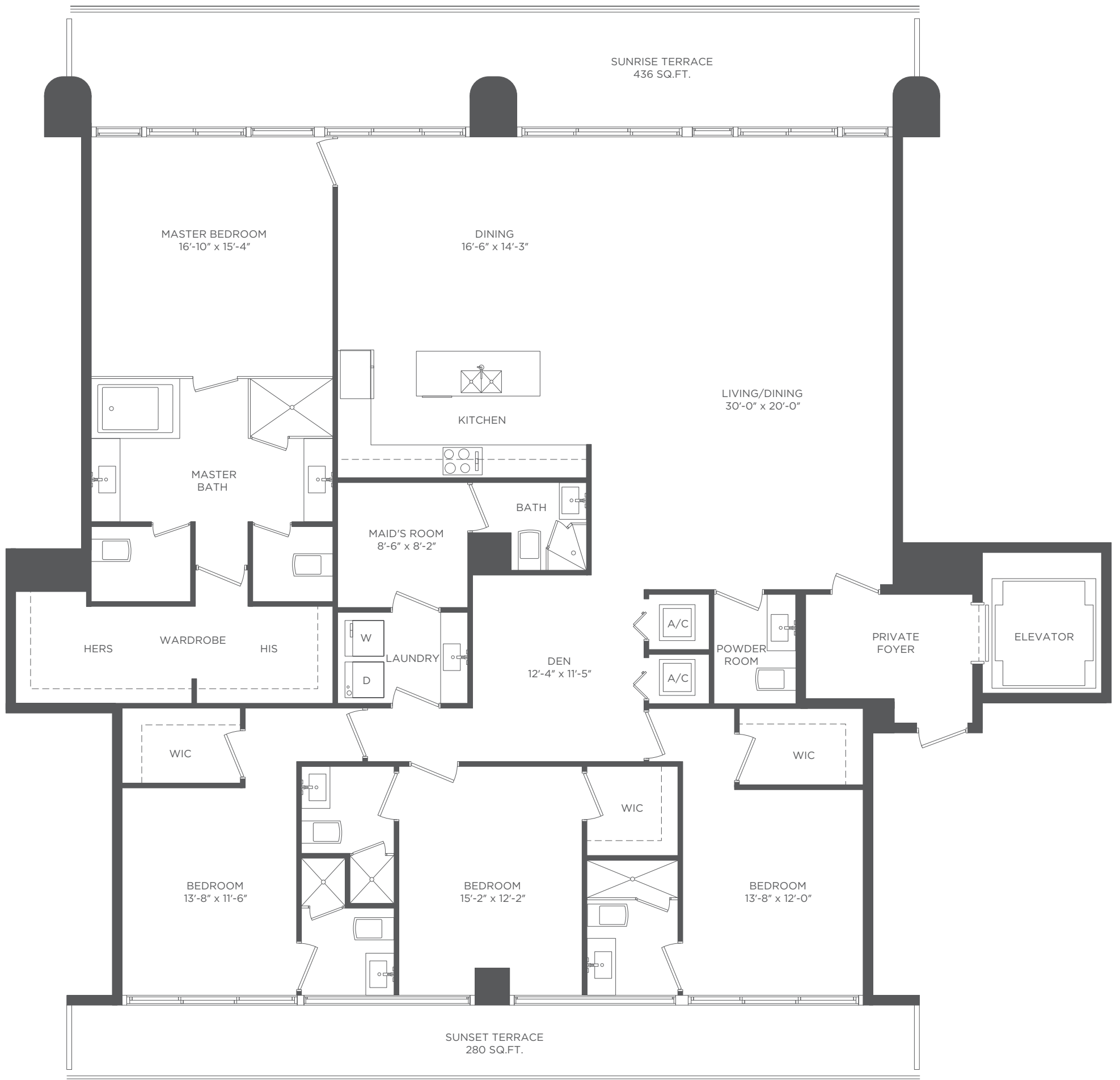


Each purchaser is advised that there are various methods for calculating the square footage of a Unit, and that depending on the method of calculation, the quoted square footage of a Unit in advertising materials may vary from the square footage of a Unit as stated or described in the Prospectus and the Declaration. The dimensions of the Unit shown in these floor plans have been calculated from the exterior boundaries of the exterior walls to the centerline of interior demising walls, including common elements such as structural walls and other interior structural components of the building and in fact vary from the dimensions that would be determined by using the description and definition of the "Unit" set forth in the Prospectus and the Declaration. For your reference, the area of the Unit, determined in accordance with Unit boundaries as defined in the Prospectus and the Declaration is less than the square footage reflected here. The configuration and use of space or the floor plan design may vary from that in the Prospectus and Declaration because the Developer has reserved the right in the Prospectus to make design, dimension, specification, and plan changes at any time, in the Developer's discretion, without notice to Unit buyers. Note that measurements of rooms set forth on this floor plan are generally taken at the greatest points of each given room (as if the room were a perfect rectangle), without regard for any cutouts. Accordingly, the area of the actual room will typically be smaller than the product obtained by multiplying the stated length times width. All dimensions are approximate and may vary with actual construction, and all floor plans and development plans are subject to change. The furnishings and décor illustrated are not included with the purchase of the Unit. See Prospectus for additional information regarding what is offered with the Unit and the calculation of Unit square footage and dimensions.

ONE PARAISO

BY PIERO LISSONI

PENTHOUSE COLLECTION

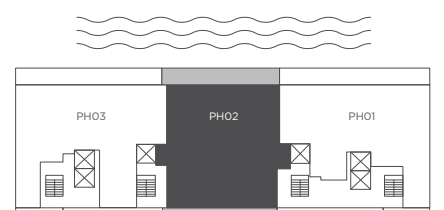


PENTHOUSE 02

4 BEDS / 5^{1/2} BATHS + DEN + MAID'S ROOM

LEVELS 50TH TO 52ND

A/C INTERIOR AREA	3,289 SQ. FT.	305.56 SQ. M.
TERRACE AREA	716 SQ. FT.	66.52 SQ. M.
TOTAL RESIDENCE	4,005 SQ. FT.	372.08 SQ. M.

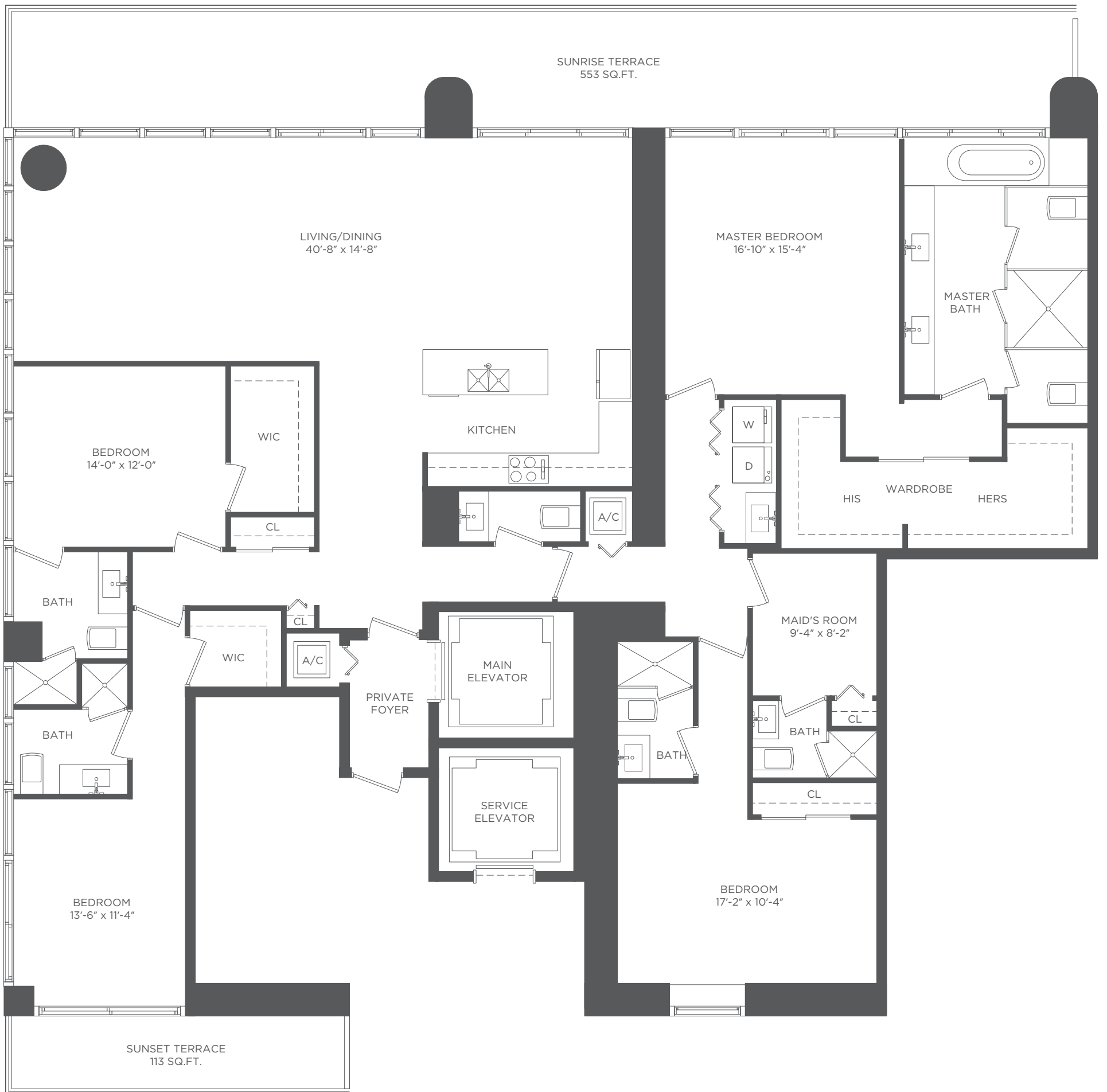


Each purchaser is advised that there are various methods for calculating the square footage of a Unit, and that depending on the method of calculation, the quoted square footage of a Unit in advertising materials may vary from the square footage of a Unit as stated or described in the Prospectus and the Declaration. The dimensions of the Unit shown in these floor plans have been calculated from the exterior boundaries of the exterior walls to the centerline of interior demising walls, including common elements such as structural walls and other interior structural components of the building and in fact vary from the dimensions that would be determined by using the description and definition of the "Unit" set forth in the Prospectus and the Declaration. For your reference, the area of the Unit, determined in accordance with Unit boundaries as defined in the Prospectus and the Declaration is less than the square footage reflected here. The configuration and use of space or the floor plan design may vary from that in the Prospectus and Declaration because the Developer has reserved the right in the Prospectus to make design, dimension, specification, and plan changes at any time, in the Developer's discretion, without notice to Unit buyers. Note that measurements of rooms set forth on this floor plan are generally taken at the greatest points of each given room (as if the room were a perfect rectangle), without regard for any cutouts. Accordingly, the area of the actual room will typically be smaller than the product obtained by multiplying the stated length times width. All dimensions are approximate and may vary with actual construction, and all floor plans and development plans are subject to change. The furnishings and décor illustrated are not included with the purchase of the Unit. See Prospectus for additional information regarding what is offered with the Unit and the calculation of Unit square footage and dimensions.

ONE PARAISO

BY PIERO LISSONI

PENTHOUSE COLLECTION

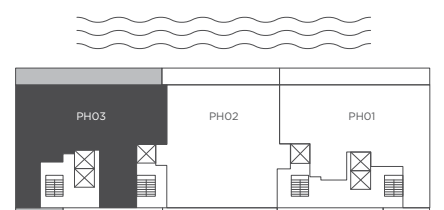


PENTHOUSE 03

4 BEDS / 5^{1/2} BATHS + MAID'S ROOM

LEVELS 50TH TO 52ND

A/C INTERIOR AREA	3,319 SQ. FT.	308.35 SQ. M.
TERRACE AREA	666 SQ. FT.	61.87 SQ. M.
TOTAL RESIDENCE	3,985 SQ. FT.	370.22 SQ. M.

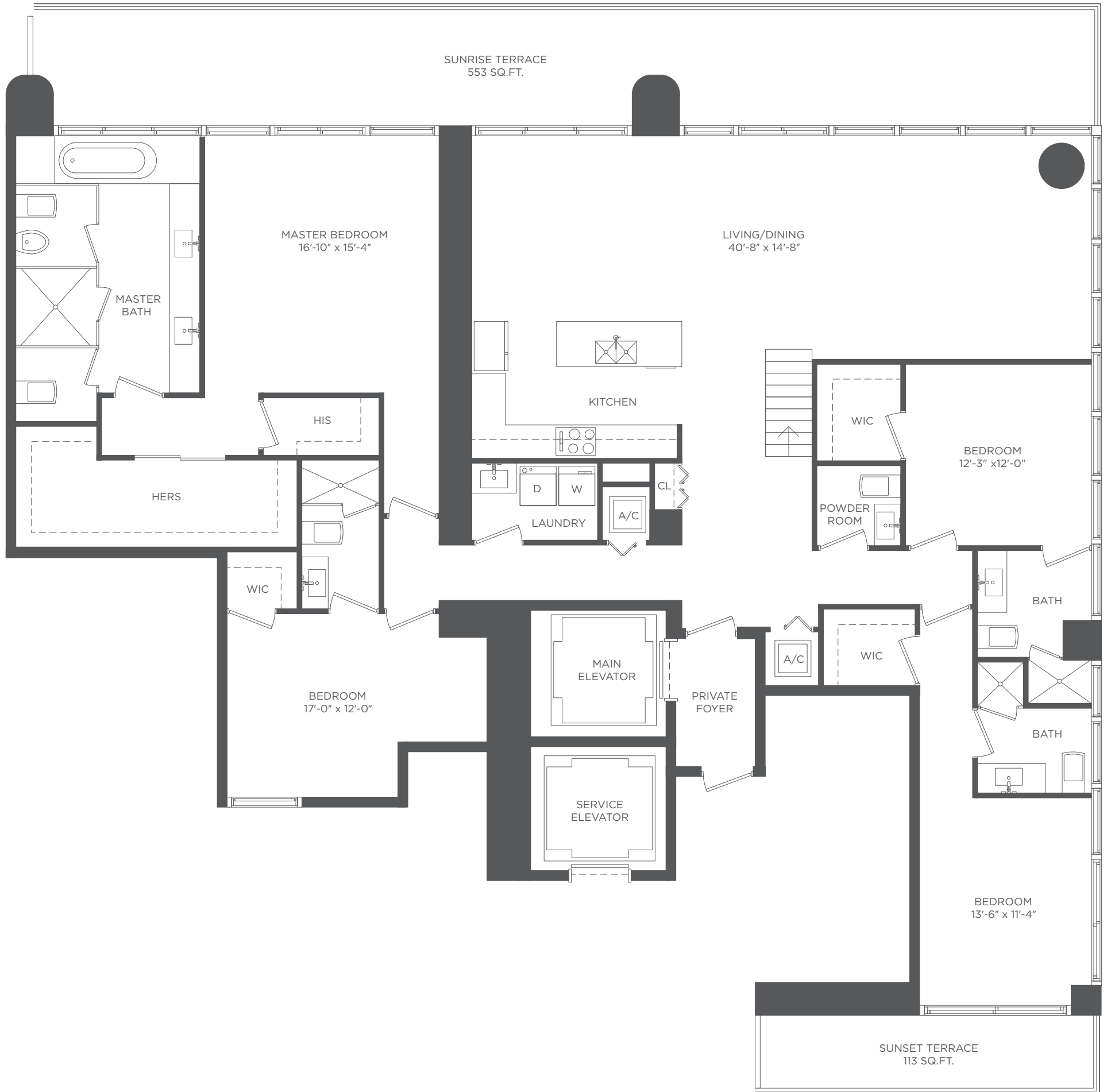


Each purchaser is advised that there are various methods for calculating the square footage of a Unit, and that depending on the method of calculation, the quoted square footage of a Unit in advertising materials may vary from the square footage of a Unit as stated or described in the Prospectus and the Declaration. The dimensions of the Unit shown in these floor plans have been calculated from the exterior boundaries of the exterior walls to the centerline of interior demising walls, including common elements such as structural walls and other interior structural components of the building and in fact vary from the dimensions that would be determined by using the description and definition of the "Unit" set forth in the Prospectus and the Declaration. For your reference, the area of the Unit, determined in accordance with Unit boundaries as defined in the Prospectus and the Declaration is less than the square footage reflected here. The configuration and use of space or the floor plan design may vary from that in the Prospectus and Declaration because the Developer has reserved the right in the Prospectus to make design, dimension, specification, and plan changes at any time, in the Developer's discretion, without notice to Unit buyers. Note that measurements of rooms set forth on this floor plan are generally taken at the greatest points of each given room (as if the room were a perfect rectangle), without regard for any cutouts. Accordingly, the area of the actual room will typically be smaller than the product obtained by multiplying the stated length times width. All dimensions are approximate and may vary with actual construction, and all floor plans and development plans are subject to change. The furnishings and décor illustrated are not included with the purchase of the Unit. See Prospectus for additional information regarding what is offered with the Unit and the calculation of Unit square footage and dimensions.

ONE PARAISO

BY PIERO LISSONI

PENTHOUSE COLLECTION

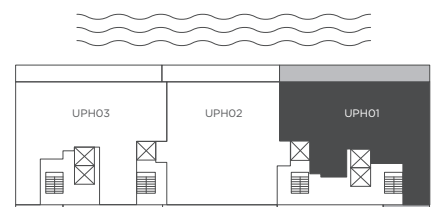


UPPER PENTHOUSE 01

4 BEDROOMS / 4^{1/2} BATHS + ROOF TERRACE

LEVEL 53RD

A/C INTERIOR AREA	3,315 SQ. FT.	307.97 SQ. M.
TERRACE AREA	2,996 SQ. FT.	278.33 SQ. M.
TOTAL RESIDENCE	6,311 SQ. FT.	586.30 SQ. M.

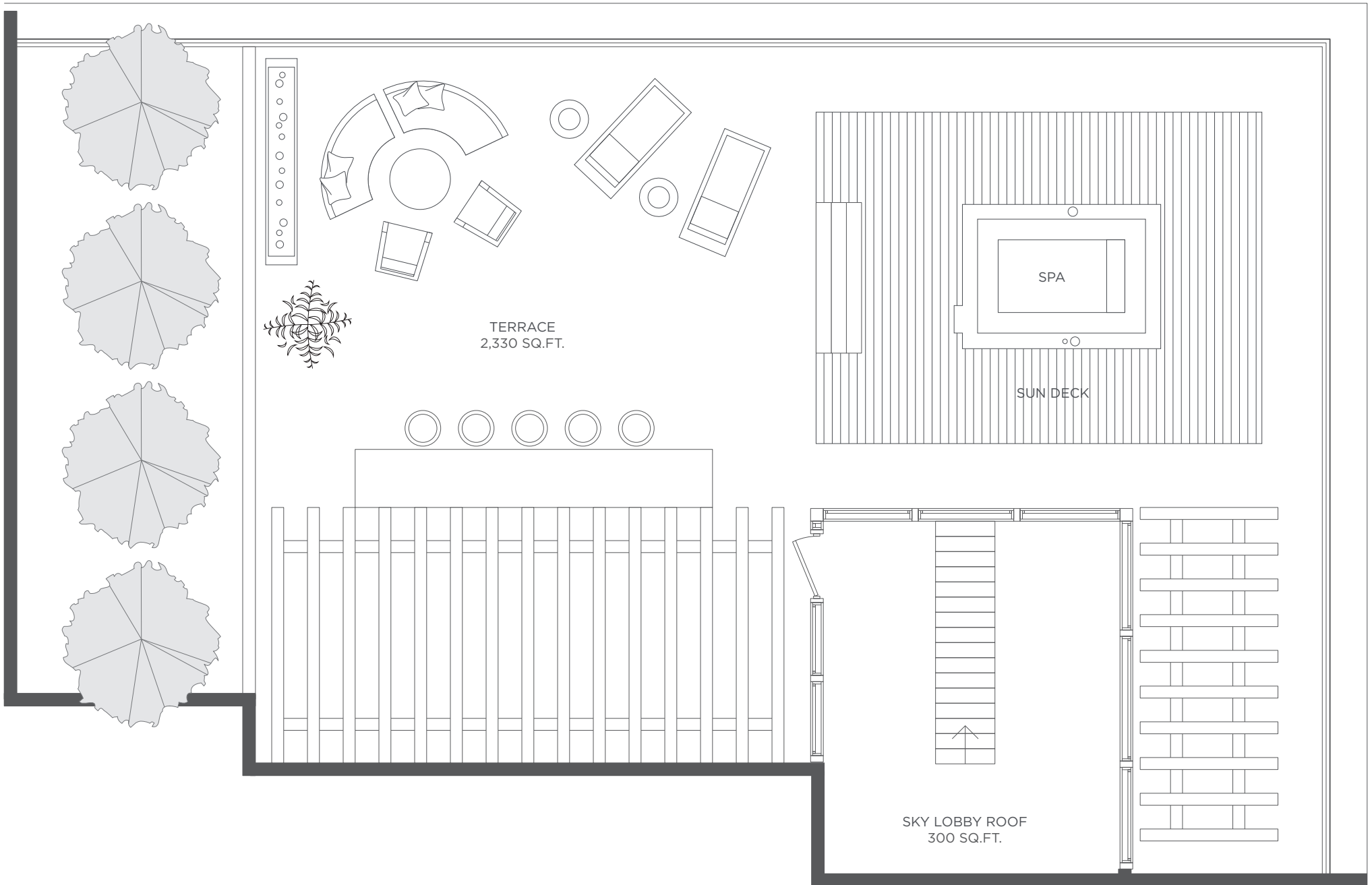


Each purchaser is advised that there are various methods for calculating the square footage of a Unit, and that depending on the method of calculation, the quoted square footage of a Unit in advertising materials may vary from the square footage of a Unit as stated or described in the Prospectus and the Declaration. The dimensions of the Unit shown in these floor plans have been calculated from the exterior boundaries of the exterior walls to the centerline of interior demising walls, including common elements such as structural walls and other interior structural components of the building and in fact vary from the dimensions that would be determined by using the description and definition of the "Unit" set forth in the Prospectus and the Declaration. For your reference, the area of the Unit, determined in accordance with Unit boundaries as defined in the Prospectus and the Declaration is less than the square footage reflected here. The configuration and use of space or the floor plan design may vary from that in the Prospectus and Declaration because the Developer has reserved the right in the Prospectus to make design, dimension, specification, and plan changes at any time, in the Developer's discretion, without notice to Unit buyers. Note that measurements of rooms set forth on this floor plan are generally taken at the greatest points of each given room (as if the room were a perfect rectangle), without regard for any cutouts. Accordingly, the area of the actual room will typically be smaller than the product obtained by multiplying the stated length times width. All dimensions are approximate and may vary with actual construction, and all floor plans and development plans are subject to change. The furnishings and décor illustrated are not included with the purchase of the Unit. See Prospectus for additional information regarding what is offered with the Unit and the calculation of Unit square footage and dimensions.

ONE PARAISO

BY PIERO LISSONI

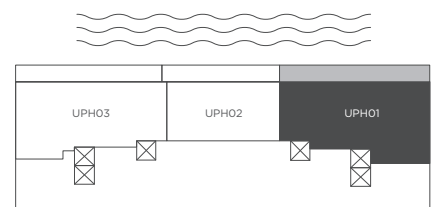
PENTHOUSE COLLECTION



UPPER PENTHOUSE 01

ROOF TERRACE

LEVEL 54TH

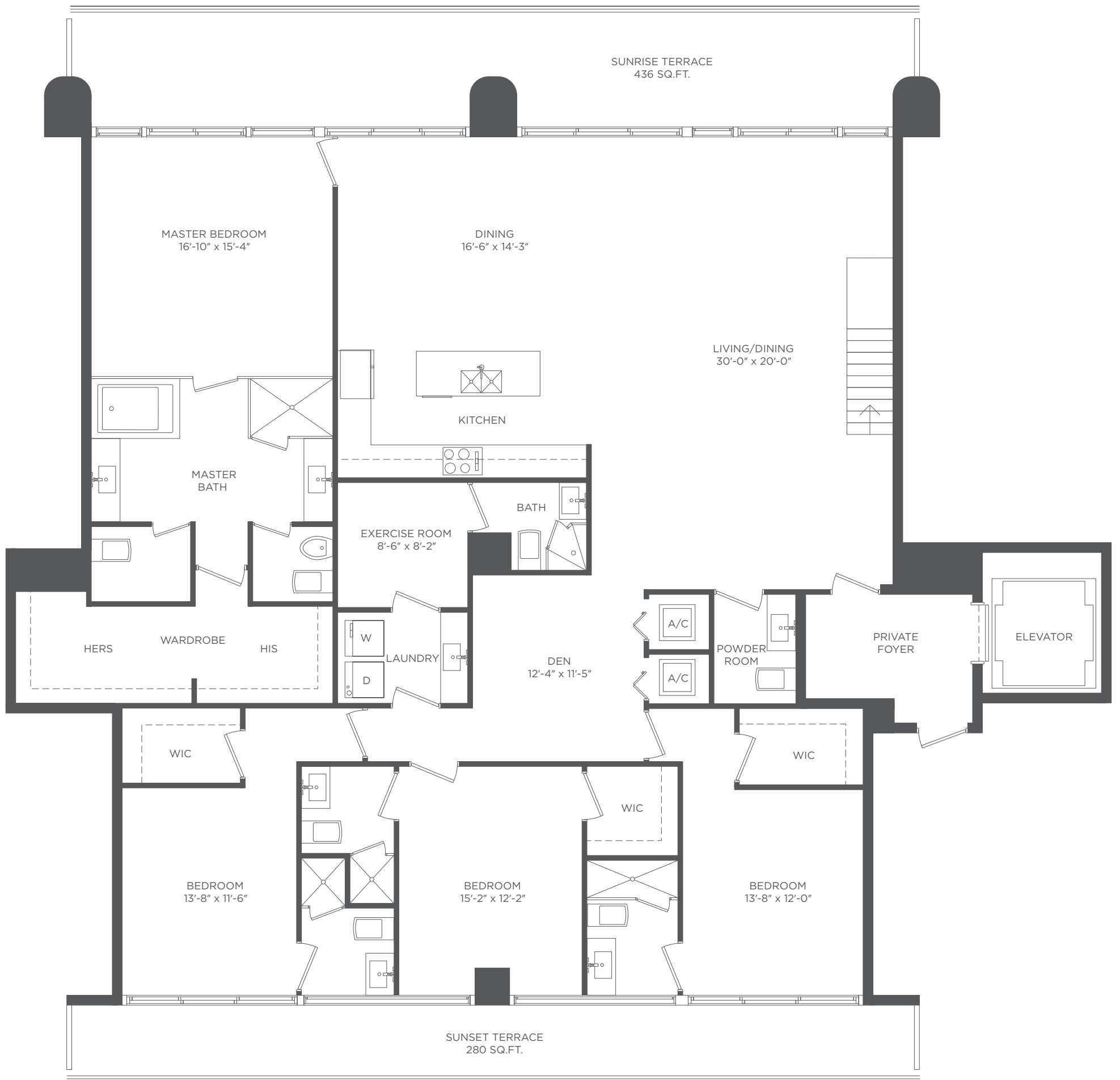


Each purchaser is advised that there are various methods for calculating the square footage of a Unit, and that depending on the method of calculation, the quoted square footage of a Unit in advertising materials may vary from the square footage of a Unit as stated or described in the Prospectus and the Declaration. The dimensions of the Unit shown in these floor plans have been calculated from the exterior boundaries of the exterior walls to the centerline of interior demising walls, including common elements such as structural walls and other interior structural components of the building and in fact vary from the dimensions that would be determined by using the description and definition of the "Unit" set forth in the Prospectus and the Declaration. For your reference, the area of the Unit, determined in accordance with Unit boundaries as defined in the Prospectus and the Declaration is less than the square footage reflected here. The configuration and use of space or the floor plan design may vary from that in the Prospectus and Declaration because the Developer has reserved the right in the Prospectus to make design, dimension, specification, and plan changes at any time, in the Developer's discretion, without notice to Unit buyers. Note that measurements of rooms set forth on this floor plan are generally taken at the greatest points of each given room (as if the room were a perfect rectangle), without regard for any cutouts. Accordingly, the area of the actual room will typically be smaller than the product obtained by multiplying the stated length times width. All dimensions are approximate and may vary with actual construction, and all floor plans and development plans are subject to change. The furnishings and décor illustrated are not included with the purchase of the Unit. See Prospectus for additional information regarding what is offered with the Unit and the calculation of Unit square footage and dimensions.

ONE PARAISO

BY PIERO LISSONI

PENTHOUSE COLLECTION

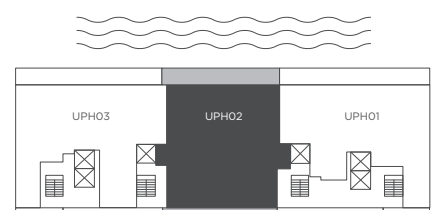


UPPER PENTHOUSE 02

4 BEDROOMS / 5^{1/2} BATHS + DEN, EXERCISE ROOM & ROOF TERRACE

LEVEL 53RD

A/C INTERIOR AREA	3,589 SQ. FT.	333.42 SQ. M.
TERRACE AREA	2,376 SQ. FT.	220.73 SQ. M.
TOTAL RESIDENCE	5,965 SQ. FT.	554.15 SQ. M.

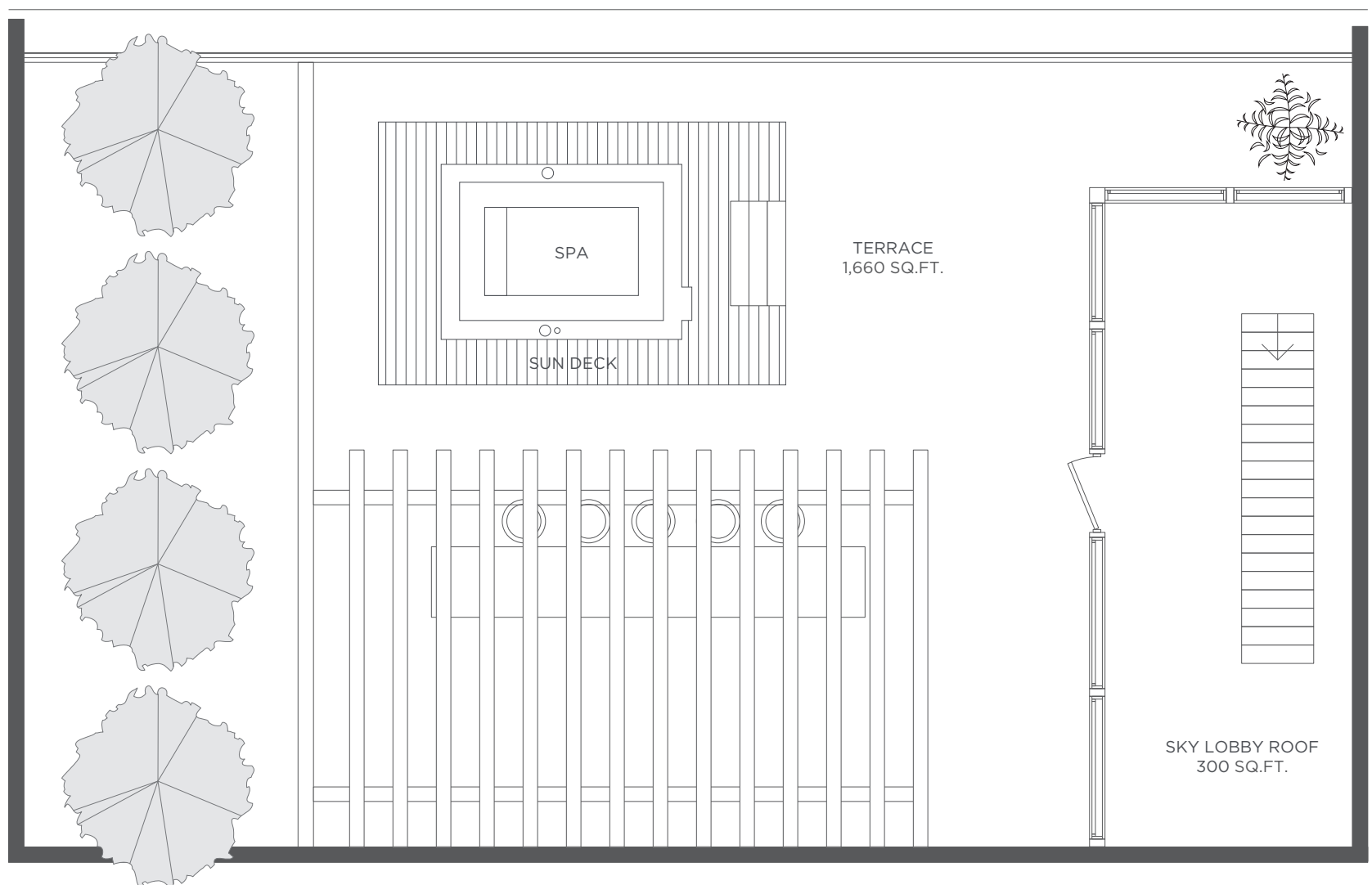


Each purchaser is advised that there are various methods for calculating the square footage of a Unit, and that depending on the method of calculation, the quoted square footage of a Unit in advertising materials may vary from the square footage of a Unit as stated or described in the Prospectus and the Declaration. The dimensions of the Unit shown in these floor plans have been calculated from the exterior boundaries of the exterior walls to the centerline of interior demising walls, including common elements such as structural walls and other interior structural components of the building and in fact vary from the dimensions that would be determined by using the description and definition of the "Unit" set forth in the Prospectus and the Declaration. For your reference, the area of the Unit, determined in accordance with Unit boundaries as defined in the Prospectus and the Declaration is less than the square footage reflected here. The configuration and use of space or the floor plan design may vary from that in the Prospectus and Declaration because the Developer has reserved the right in the Prospectus to make design, dimension, specification, and plan changes at any time, in the Developer's discretion, without notice to Unit buyers. Note that measurements of rooms set forth on this floor plan are generally taken at the greatest points of each given room (as if the room were a perfect rectangle), without regard for any cutouts. Accordingly, the area of the actual room will typically be smaller than the product obtained by multiplying the stated length times width. All dimensions are approximate and may vary with actual construction, and all floor plans and development plans are subject to change. The furnishings and décor illustrated are not included with the purchase of the Unit. See Prospectus for additional information regarding what is offered with the Unit and the calculation of Unit square footage and dimensions.

ONE PARAISO

BY PIERO LISSONI

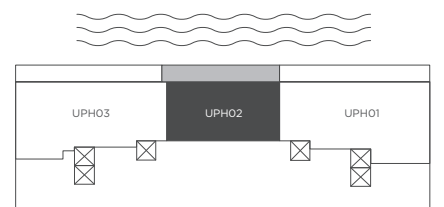
PENTHOUSE COLLECTION



UPPER PENTHOUSE 02

ROOF TERRACE

LEVEL 54TH



Each purchaser is advised that there are various methods for calculating the square footage of a Unit, and that depending on the method of calculation, the quoted square footage of a Unit in advertising materials may vary from the square footage of a Unit as stated or described in the Prospectus and the Declaration. The dimensions of the Unit shown in these floor plans have been calculated from the exterior boundaries of the exterior walls to the centerline of interior demising walls, including common elements such as structural walls and other interior structural components of the building and in fact vary from the dimensions that would be determined by using the description and definition of the "Unit" set forth in the Prospectus and the Declaration. For your reference, the area of the Unit, determined in accordance with Unit boundaries as defined in the Prospectus and the Declaration is less than the square footage reflected here. The configuration and use of space or the floor plan design may vary from that in the Prospectus and Declaration because the Developer has reserved the right in the Prospectus to make design, dimension, specification, and plan changes at any time, in the Developer's discretion, without notice to Unit buyers. Note that measurements of rooms set forth on this floor plan are generally taken at the greatest points of each given room (as if the room were a perfect rectangle), without regard for any cutouts. Accordingly, the area of the actual room will typically be smaller than the product obtained by multiplying the stated length times width. All dimensions are approximate and may vary with actual construction, and all floor plans and development plans are subject to change. The furnishings and décor illustrated are not included with the purchase of the Unit. See Prospectus for additional information regarding what is offered with the Unit and the calculation of Unit square footage and dimensions.

ONE PARAISO

BY PIERO LISSONI

PENTHOUSE COLLECTION

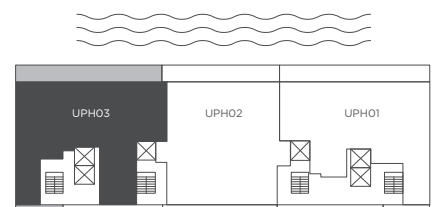


UPPER PENTHOUSE 03

4 BEDROOMS / 5^{1/2} BATHS + EXERCISE ROOM & ROOF TERRACE

LEVEL 53RD

A/C INTERIOR AREA	3,619 SQ. FT.	336.21 SQ. M.
TERRACE AREA	2,996 SQ. FT.	278.33 SQ. M.
TOTAL RESIDENCE	6,615 SQ. FT.	614.54 SQ. M.

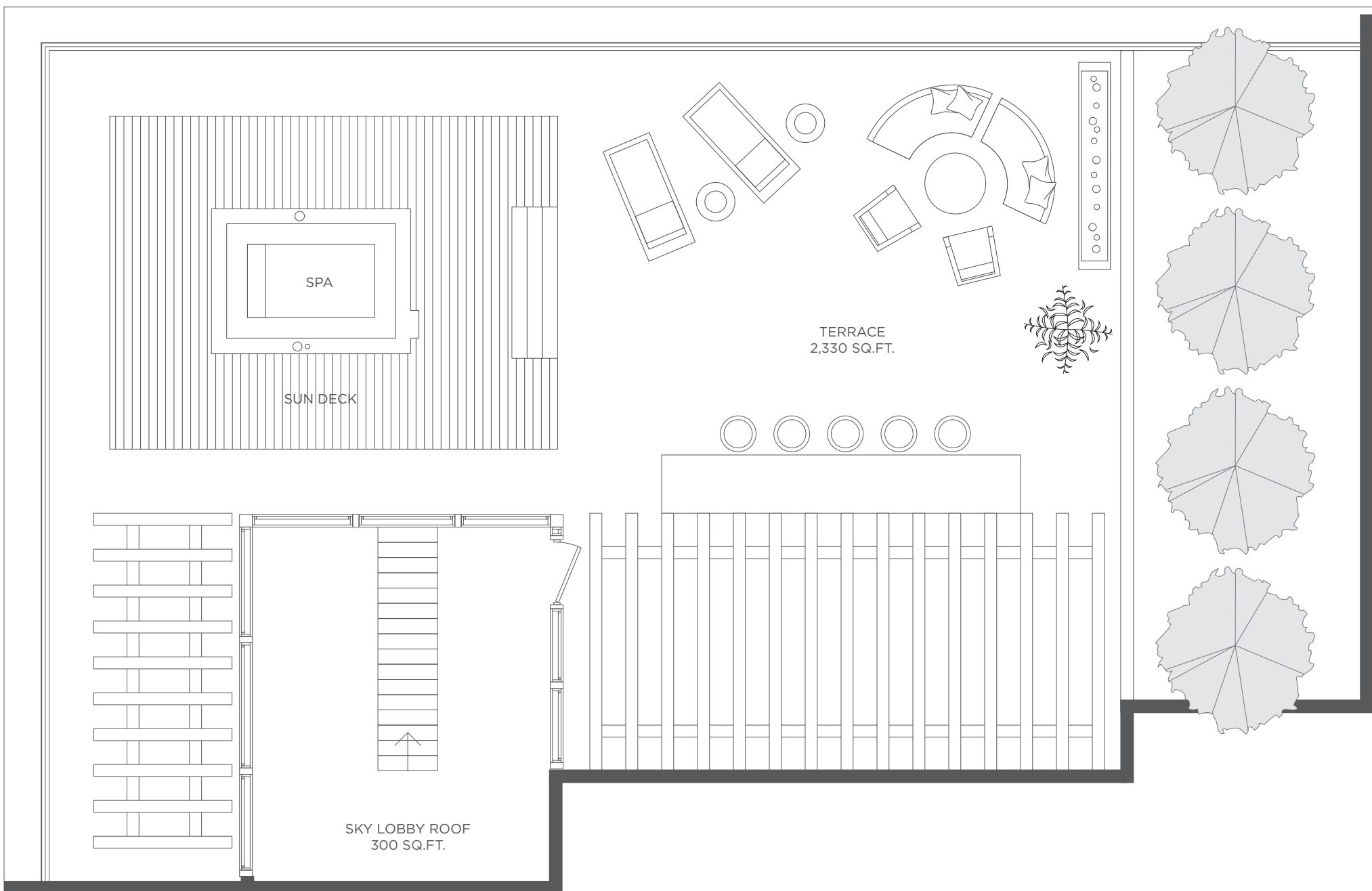


Each purchaser is advised that there are various methods for calculating the square footage of a Unit, and that depending on the method of calculation, the quoted square footage of a Unit in advertising materials may vary from the square footage of a Unit as stated or described in the Prospectus and the Declaration. The dimensions of the Unit shown in these floor plans have been calculated from the exterior boundaries of the exterior walls to the centerline of interior demising walls, including common elements such as structural walls and other interior structural components of the building and in fact vary from the dimensions that would be determined by using the description and definition of the "Unit" set forth in the Prospectus and the Declaration. For your reference, the area of the Unit, determined in accordance with Unit boundaries as defined in the Prospectus and the Declaration is less than the square footage reflected here. The configuration and use of space or the floor plan design may vary from that in the Prospectus and Declaration because the Developer has reserved the right in the Prospectus to make design, dimension, specification, and plan changes at any time, in the Developer's discretion, without notice to Unit buyers. Note that measurements of rooms set forth on this floor plan are generally taken at the greatest points of each given room (as if the room were a perfect rectangle), without regard for any cutouts. Accordingly, the area of the actual room will typically be smaller than the product obtained by multiplying the stated length times width. All dimensions are approximate and may vary with actual construction, and all floor plans and development plans are subject to change. The furnishings and décor illustrated are not included with the purchase of the Unit. See Prospectus for additional information regarding what is offered with the Unit and the calculation of Unit square footage and dimensions.

ONE PARAISO

BY PIERO LISSONI

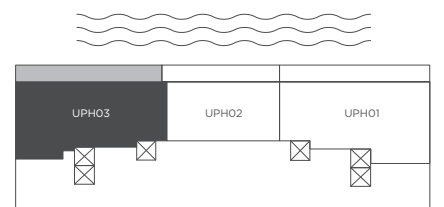
PENTHOUSE COLLECTION



UPPER PENTHOUSE 03

ROOF TERRACE

LEVEL 54TH



Each purchaser is advised that there are various methods for calculating the square footage of a Unit, and that depending on the method of calculation, the quoted square footage of a Unit in advertising materials may vary from the square footage of a Unit as stated or described in the Prospectus and the Declaration. The dimensions of the Unit shown in these floor plans have been calculated from the exterior boundaries of the exterior walls to the centerline of interior demising walls, including common elements such as structural walls and other interior structural components of the building and in fact vary from the dimensions that would be determined by using the description and definition of the "Unit" set forth in the Prospectus and the Declaration. For your reference, the area of the Unit, determined in accordance with Unit boundaries as defined in the Prospectus and the Declaration is less than the square footage reflected here. The configuration and use of space or the floor plan design may vary from that in the Prospectus and Declaration because the Developer has reserved the right in the Prospectus to make design, dimension, specification, and plan changes at any time, in the Developer's discretion, without notice to Unit buyers. Note that measurements of rooms set forth on this floor plan are generally taken at the greatest points of each given room (as if the room were a perfect rectangle), without regard for any cutouts. Accordingly, the area of the actual room will typically be smaller than the product obtained by multiplying the stated length times width. All dimensions are approximate and may vary with actual construction, and all floor plans and development plans are subject to change. The furnishings and décor illustrated are not included with the purchase of the Unit. See Prospectus for additional information regarding what is offered with the Unit and the calculation of Unit square footage and dimensions.